



PUBLIC RELATIONS

RESEARCH/PLANNING

December 2018 Admissions and Releases – Admissions for December 2018 totaled **706** (613-males & 93-females) while releases totaled **466** (419-males & 47 females) for a net increase in-house of **240** inmates.

Inmate Population Growth/Projection – At the end of December 2018, the jurisdictional population totaled **17,799** representing a decrease of **279** inmates since the first of January 2018. Calendar year 2018 had an average decrease of **23** inmates per month, down from an average growth of **45** inmates per month during calendar year 2017.

Average County Jail Back-up – The backup in the County Jails averaged **1,494** inmates per day during the month of December 2018 – down from an average of **1,631** inmates per day during the month of November 2018. Of the **1,494** average, short-term revocations averaged **536** (471-males & 65-females) during the month. For CY18, the backup in the County Jails averaged **1,611** inmates per month – up from an average of **1,390** inmates per month during CY17.

SOCIAL MEDIA

Facebook results for December showed a total of seven thousand two hundred seventy-three (7,273) “likes” of our page, an increase of two hundred four (204) from the previous month. In December, we added a Twitter account to our social media activity. We currently have 189 followers.

LEGAL SERVICES

PREA

PREA Hotline Data:

Number of Calls Received	282
Total PREA Issue Calls	4
Total Non-PREA Calls	155
Total Calls Referred to Internal Affairs Division	6
Total Repeat Calls	85
Total Calls with No Message	38
Total Technical Failure Calls	0

Internal Affairs is handling all PREA investigations. The ADC PREA Hotline had no technical issues during the month of December. All units conducted PREA test calls from the inmate telephones. A total of fifty-seven (57) test calls came in from the units, which showed that the phones and hotline were functioning properly. The test calls are not reflected in the above numbers.

INMATE INSTITUTIONAL GRIEVANCES

Inmate Formal/Informal Grievances: During December 2018, a total of one thousand five hundred thirty-four (1,534) formal grievances and two thousand four hundred ten (2,410) informal grievances were filed at various units.

Institutional Grievances Appeals: There were a total of three hundred sixty-one (361) appeals of institutional grievances received in December 2018. Twenty-four (24) were acknowledged and sixty-seven (67) were rejected for various reasons. A total of three hundred fifty-one (351) appeals were answered; three hundred forty-seven (347) had no merit and four (4) were found with merit.

INSTITUTIONS

STTG

During the month of December, the STTG Coordinator assisted in teaching “Blue Courage” at the Training Academy on the 3rd and 4th. The STTG Coordinator, along with K9 officers, conducted an STTG sweep of the Tucker Unit on the 12th. The STTG Coordinator also taught the BCOT STTG and K-9 classes on the 19th. The STTG 4th quarter meeting was held at the Training Academy on the 19th.

FARM

The year wrapped up with a wet December. While Tucker was able to complete their soybean harvest, Cummins still has several acres left in the field. Insurance claims were filed for corn at Cummins, and for soybeans at all three ADC farms. A quality issue has plagued soybean farmers across the state, and our farms were no different. Currently, there are 87,000 bushels of beans in storage at Cummins which were rejected at the elevators. While some is being used for feed, an effort is being made to try and sell as much of the surplus as possible.

The fall pregnancy check and inventory of the beef herds were completed. The conception rates were above average at Cummins and around average at Wrightsville. The process of sending open cows through the cold storage plant to use for inmate consumption has been underway at Cummins. This is more economical than feeding them during the winter. A sale on January 8th of two hundred fifty-six (256) calves on the Superior Livestock internet auction is planned.

All of the sweet potatoes that were harvested during the year have been used. Some frozen vegetables remain in the freezers at Vegetable Processing, and a few units were still able to harvest greens and kale during December.

FARM, continued

Milk production has remained steady and is meeting our needs. Egg production has been slightly off as a result of one of the houses being depopulated. Pullets were moved into that house just before Christmas and their production has been increasing. New chicks for the pullet house are scheduled to arrive on January 11th.

REGIONAL MAINTENANCE HOURS

Regional Maintenance Hours	December 2018
Benton Unit	6,756
Delta Regional Unit	1,520
East Arkansas Regional Unit	976
Grimes Unit	712
McPherson Unit	1,692
Mississippi County Work Release	1,056
North Central Unit	6,184
Ouachita River Unit	1,208
Randall L. Williams Unit	2,248
Texarkana Regional Correctional Center	1,012
Tucker Unit	1,144
Varner Unit	1,952
Wrightsville Unit	712
Total Hours	27,172

WORK RELEASE RENT REPORT

Unit	December 2018
Benton Unit	\$86,904.00
Mississippi County Work Release	\$53,805.00
Northwest Arkansas Work Release	\$37,536.00
Pine Bluff Work Release	\$26,146.00
Texarkana Regional Correctional Center	\$37,842.00
Wrightsville/Hawkins Work Release	\$27,370.00
Total	\$269,603.00

WAGE**(Workforce Alliance for Growth in the Economy)**

Unit	Slots	Completed	Discharged	End Count
Delta	13	12	0	12**
Ester*	30	0	21	9
Hawkins	36	2	2	18
Ouachita River	10	0	0	10
Tucker	18	0	0	18
Wrightsville	26	6	1	28
Total	133	20	24	95

*The WAGE Program at the Ester Unit is currently inactive due to the program transitioning to a new computer system at SEARK College.

**One inmate from the Delta Unit transferred to work release.

RANDALL L. WILLIAMS
JUVENILE EDUCATION PROGRAM

	Slots	Enrolled	Discharged	End Count
Juveniles*	20	9	2	8

*Juveniles are transferred from the program once they reach the age of eighteen (18). The Juvenile count also changes based on new commitments. During the month, no inmates were on punitive status. There was one (1) new commitment.

ADMINISTRATIVE SERVICES**BUDGET SECTION UPDATE**

No Act 715 cases were filed in December.

PROCUREMENT SECTION UPDATE

No Current Bids

No New Contracts/OSP

No ABA Contracts

No Contracts Awarded In-House

Renewed Contracts/OSP:

- Water Treatment – Chem Aqua
- Waste Disposal Services - Newport

Procurement/Contracts Report (required by policy)–

For December 2018, Purchase Orders and Contracts in excess of \$10,000 amounted to \$2,891,569.78. Of this amount, \$2,118,722.54 was for Inmate Care and Custody-related items (food, shoes, clothing, etc.). Bulk fuel costs for the month of December were \$92,295.50 – average cost of E-10 was \$1.69/gallon; average cost for bulk diesel was \$2.19/gallon.

HUMAN RESOURCES UPDATE

Workplace Safety – Fifty-four (54) incidents were reported to the Company Nurse in December, bringing the total of reported incidents to eight hundred sixty-eight (868) in 2018.

Benefits – There were sixty-six (66) FMLA requests processed during the month; fifty-six (56) were approved and ten (10) denied. A total of sixteen (16) catastrophic leave requests were received; eight (8) were approved, four (4) were denied, and four (4) were pending at the time of this report.

Physical Assessments – A total of one hundred fifty-nine (159) applicants and incumbent personnel were assessed during December. Sixty-five (65) incumbent personnel successfully passed the physical assessment, and four (4) did not. Those four rescheduled and passed after a physician's release. Eighty-nine (89) applicants successfully passed the physical assessment and one (1) did not. That applicant did not reschedule.

Employment – A total of one thousand five hundred thirty-four (1,534) applications were received during December. Thirty-four (34) Non-Security applications and seventy-one (71) CO I applications were processed. Fifteen (15) Correctional Officers were rehired.

ADC personnel attended the following Job Fairs/ Recruitment Events in the month of December:

Date	Unit	Location
12/4/18	Delta	UAM - Monticello
12/5/18	Varner	Varner Unit
12/11/18	Varner	Cummins Pavilion
12/18/18	Varner	Varner Unit

CO I interviews were conducted in the month of December at various units throughout the department:

Date	Unit	Date	Unit	Date	Unit
12/4/18	MAX McPherson TRCC Tucker	12/11/18	EARU Tucker	12/17/18	EARU
12/5/18	EARU MAX	12/12/18	Cummins McPherson	12/20/18	Grimes TRCC
12/6/18	Grimes McPherson ORCU Tucker	12/13/18	Tucker	12/21/18	Varner
12/10/18	Delta Grimes McPherson	12/14/18	Delta Tucker	12/27/18	McPherson
				12/28/18	Delta

Vacancies, Hires, and Terminations –

There was a total of five hundred (500) security and non-security vacancies, twenty-two (22) new hires, ninety-five (95) terminations, and eight (8) retirements throughout the department during the month of December.

ADMINISTRATIVE SERVICES DIVISION MONTHLY REPORTS INCLUDE GIFTS, GRANTS, DONATIONS / INMATE WELFARE FUND BALANCE (required by policy):

Gifts, Grants and Donations:

No donations were made in the month of December.

The **Inmate Welfare Fund** balance on December 31, 2018 was \$7,600,038.06.

The **PAWS in Prison Fund** total on December 31, 2018 was \$245,990.23. ADC Account (7004822/Donations) balance was \$19,159.55, ADC Account (NDC0500/ Recycling) balance was \$103,645.25, and the ADC Paws in Prison Non-Profit account (Quickbooks) balance was \$123,185.43.

INFORMATION TECHNOLOGY - DECEMBER 2018

SECURUS VIDEO VISITATION (SVV) PROJECT

SVV Dog Kennel Installation:

- Cummins Unit – Pending installation.

Inmate Video Visits:

- Inmates completed three thousand nine hundred twenty-four (3,924) video visits during December and missed one hundred fifty (150).

SECURUS TABLET PROJECT:

- A total of two thousand two hundred twenty-one (2,221) tablets were leased during December.

IT/eOMIS ACTIVITIES

• DIS Datacenter Optimization (DCO) Project –

The AIMS Push Team Questionnaire was submitted to DIS. The requested data which was submitted included Agency-related information, current IT-hosted applications, equipment used for those hosting services, network information (managed by ADC IT staff), VLAN information, data storage information, and information related to purchasing categorized as Finance.

- **Offline Classification Module** – An eOMIS development for an offline classification process was proposed. Marquis provided an analysis and a design estimate for the project, which is pending management review/approval.

INFORMATION TECHNOLOGY, *continued*

- **VOIP** – The sites that are pending VOIP phone service conversion include the Varner, Cummins, North Central, Wrightsville, and Hawkins Units. We are awaiting cutover dates from the Telco vendor and fiber infrastructure for Wrightsville and Hawkins.
- **eOMIS** – Ben Harrell and Brian Strauch of Marquis Software Development visited ADC and met with Rhonda Patterson and Joyce Taylor to discuss eOMIS. During the meeting, Marquis provided an additional document that detailed information on included deliverables for the Annual eOMIS Maintenance and Support Contract. Following the meeting, all attended the annual Admin East Employee Association Christmas luncheon.
- New Meraki software updates were installed on agency iPhones and iPads.
- Lexmark management (MVE server) was implemented in order to provide better password protection configuration on printer devices that are accessed through the browser. This, as well as upcoming firmware updates, will protect us further from Internet of Things (IoT) vulnerabilities and attacks.
- The assignment of iPads to Wardens was started, which included configuring, training (as needed), and transferring the equipment to them.

TRAINING ACADEMY - DECEMBER 2018

BASIC TRAINING DIVISION –

Under the direction of Instructor Kathy Lowery, **BCOT Class 2018-O** graduated on December 7th with fifty-one (51) cadets. Kevin Shoemaker of the Ouachita River Correctional Unit received the Willis H. Sargent Award. Deputy Warden Todd Ball of the Maximum Security Unit served as the guest speaker.

IN-SERVICE DIVISION –

Blue Courage was offered December 3rd and 4th. The 16-hour course provides the path of constant vigilance through comprehensive training that includes giving the officer the right inspiration (heart-set), the right reasoning (mind-set), the right skills (skill-set), and the right tools (tool-set). Blue Courage targets physical, mental, and spiritual aspects for officers to pave a clear path forward.

American Red Cross CPR/First Aid/AED was presented on December 11th and 21st. This class provides staff with knowledge and instruction on performing cardio-pulmonary resuscitation (CPR), along with basic first aid and the ability to use an automated external defibrillator (AED).

American Red Cross CPR Instructor Course was presented on December 3rd. Staff members who successfully complete this course become certified to instruct CPR, first aid, and AED.

Ethics/Conduct Standards is a required class for all staff that was offered on December 6th. High ethical and conduct standards are an important part of the moral compass that people develop. The class is designed to clearly define the term “ethics,” along with a thorough explanation of how it impacts an organization.

Fire Safety/Chemical Safety/Chemical Right to Know, a refresher course that was presented on December 6th, is designed to remind all staff members of the role they play in fire and chemical safety, as well as rights when dealing with chemicals.

PREA Sexual Abuse/Assault/Misconduct is a course that reinforces the ADC’s policy regarding PREA. It was presented on December 6th. Participants were provided with the tools needed for the prevention, detection, response, and investigation of sexual abuse/assaults, sexual misconduct, and sexual harassment. Staff received information on how to communicate effectively and professionally with inmates, including those who identify as lesbian, gay, bi-sexual, transgender, and intersex. Additionally, the course educates staff about an inmate’s right to be free from sexual abuse/misconduct and sexual harassment, as well as the right of both inmates and staff members to be free from retaliation for reporting sexual assault/abuse, sexual harassment, and/or sexual misconduct.

Sexual Harassment was presented on December 6th, and is designed for all staff. This class addresses sexual harassment and the right to be free from it in the workplace.

Business Communications was offered on December 11th. Since ADC employees deal with the public through both telephone and in-person interaction, this course addresses the importance of proper telephone procedures and customer service.

Management Level 1, a three-day session for new supervisors, was offered December 17th–19th. ADC staff facilitate the training, which is mandated by Executive Order. Topics include: Arkansas Government Basics, HRkansas, Performance Evaluation, Grievance Prevention and Handling, and the Fair Labor Standards Act, among others.

Use of Restraints was presented on December 19th for staff that hold positions where handcuffs and other restraints are not used on a daily basis. This class features hands-on exercises allowing staff from each unit to practice using hand restraints, leg irons, belly chains, and tethers.

TRAINING ACADEMY, *continued*

eCADEMY –

During the month of December 2018, eight hundred sixteen (816) ADC employees completed a total of 8,961.15 hours of eCADEMY training. Approximately 11% of ADC employees completed at least one course during that timeframe, averaging 1.96 hours per employee. The Computer Lab is open on a daily basis for employees who wish to complete online training through eCademy.

HEALTH/CORRECTIONAL PROGRAMS

CHAPLAINCY SERVICES

All Facilities – Christmas sack distributions were held at all units during the week of December 16th–23rd. Chaplains and volunteers at all facilities helped prepare and distribute the bags to inmates.

Delta Regional Unit – On December 4th, ten (10) inmates participated in a “Bible QUIZlympics” competition facilitated by four (4) volunteers.

East Arkansas Regional Unit – On December 3rd, the EARU Chapel hosted a welcome event for the new chaplain, Chaplain James Neely. Eighteen inmates completed a “Kairos Walk” event that was held on the 12th. Fifty-one (51) guests and ten (10) volunteers were in attendance at the PAL graduation of eight (8) inmates on the 6th. Pastor Steve from Bellevue Baptist Church conducted two services on the 10th, which were attended by two hundred twenty-four (224) inmates. A winter revival was held for inmates on the 2nd–6th. Central Arkansas Baptist Bible Institute (CABBI) held its End-of-Semester Celebration at the unit.

Hawkins Unit – A Christmas Cantata took place at Hawkins Unit on December 5th, which was attended by forty-eight (48) inmates. Two hundred fifty-five (255) inmates attended a Christmas party held at the unit on the 21st. On the 18th, the Catholic Bishop visited the unit to conduct Christmas Mass, of which ten (10) inmates attended.

McPherson Unit – On December 7th, three (3) volunteers with “Love Without End” held a service attended by two hundred thirty (230) inmates. A total of four hundred (400) inmates attended a Christmas cantata conducted by fourteen (14) volunteers on the 21st and 22nd.

North Central Unit – The NCU Chapel distributed more than two thousand (2,000) Christmas cards to the inmate population on December 7th. Seven (7) volunteers from New Life Family Fellowship held a Christmas concert on the 13th that was attended by eighty-seven (87) inmates. On the 20th, two (2) volunteers from Fairview Baptist Church conducted a Christmas service attended by eighty-two (82) inmates.

Ouachita River Correctional Unit – Gideons International toured the unit, distributed Bibles, and visited with inmates on December 15th. On the 25th, one hundred thirty-two (132) inmates attended a Christmas service conducted by Senior Chaplain Moore.

Wrightsville Unit – On December 23rd, nine (9) volunteers led a Christmas Eve service attended by one hundred thirty-two (132) inmates. Two (2) volunteers from “Real Men Talk” hosted an event on the 9th attended by three (3) staff members and one hundred forty-six (146) inmates. On the 15th, a “Red Carpet Volunteer Appreciation Gala” event was held at the unit in which five (5) inmates helped serve and twenty-two (22) volunteers attended. Bishop A. Taylor offered a Christmas Mass on the 18th that was attended by twenty-three (23) inmates and four (4) staff members.

ACCREDITATION

ACA Internal Audits Completed:

12/6–12/6 Pine Bluff Complex Pre-Audit
12/10–12/14 Pine Bluff Complex File Review
12/17–12/21 NWAARC File Review
12/27–12/28 TRCC File Review

There were no Fire/Safety and Sanitation independent audits conducted by the Fire and Sanitation Coordinator during the month of December.

VOLUNTEER SERVICES

Total Number of Volunteer Hours for December 2018:

Unit/Program	Hours
Cummins Unit	2
Delta Unit	15
East Arkansas Regional Unit	6
Hawkins Unit	15
Mississippi County Work Release Center	12
Northwest Arkansas Work Release Center	22.5
Ouachita River Correctional Unit	24
Pine Bluff Complex	2
Varner Unit	14.75
PAWS	16
Think Legacy	142.75
Religious Services/Chaplaincy	3,972
Total Hours	4,244

MENTAL HEALTH SERVICES

Sex Offender Treatment Program (SATP):

	Slots	Completed	Removed	Clients
RSVP	238	57	8	238
SOFT	30	0	0	9
Total	268	57	8	247

There are seven hundred sixty-eight (768) males on the waiting list for RSVP and seven (7) females on the waiting list for SOFT within five (5) years of their TE date. Of those, thirty-two (32) inmates are mandated by the Parole Board.

The average time on the waiting list from request is between one (1) and two (2) months for those stipulated.

The total on the waiting list, including those not currently within the identified timeframe, is one thousand five hundred sixteen (1,516) males and seven (7) females. There is one (1) PREA inmate in the program at this time.

***The waiting list numbers include inmates that are ineligible due to class or housing status.**

Therapeutic Community (TC):

Unit	Slots	Completed	Removed	Clients
Tucker	136*/**	12	9	127
Wrightsville	50*/**	3	5	52
McPherson	53*	3	1	49
Total	239	18	15	228

There are five hundred eighteen (518) males and three (3) females on the waiting list within eighteen (18) months of their release date. Of those, five (5) are mandated by the Parole Board.

The average time on the waiting list from request is thirty-two (32) days.

The total on the waiting list, including those not currently within the identified timeframe, is nine hundred eighty (980) males and eighty-four (84) females.

***Denotes transitional beds available at this treatment program. The Tucker Therapeutic Community has one hundred thirty-six (136) client slots and seven (7) peer counselor slots. **Treatment count has increased due to reduction of peer counselors and peer mentors.**

Substance Abuse Treatment Program (SATP):

Unit	Slots	Completed	Removed	Clients
Grimes	56*	2	7	53
McPherson	106*	15	6	95
Maximum Security	3	0	0	3
Randall L. Williams	200*/**	27	8	190
Benton	36*	4	3	36
Varner	52*/**	7	6	41
Wrightsville	150*/**	21	7	141
Total	603	76	37	559

There are one thousand eight hundred eleven (1,811) males and ten (10) females on the waiting list within eighteen (18) months of their release date. Of those, forty-four (44) are mandated by the Parole Board.

The average time on the waiting list from request is eighteen (18) days.

The total on the waiting list, including those not currently within the identified timeframe, is two thousand seven hundred thirty (2,730) males and three hundred seventeen (317) females.

***Denotes transitional beds available at this treatment program.**

****Treatment count has increased due to reduction of peer counselors and peer mentors.**

ORCU Residential Program Unit (RPU): The RPU at Ouachita had four (4) admissions and five (5) discharges in December for an end-of-month count of one hundred twenty-three (123).

McPherson Mental Health Residential Program Unit (RPU):

There were seven (7) admissions and five (5) discharges in December, for an end-of-month count of forty (40).

Habilitation Program: The Habilitation Program at the Ouachita River Correctional Unit provided treatment services to forty-eight (48) inmates during December. There were four (4) admissions and four (4) discharges for an end-of-month count of forty-four (44).

Restrictive Housing (RH) Anger Management

Treatment: The RH Anger Management Treatment Program at the Cummins Unit provided treatment services to six (6) inmates during December. There were no admissions and two (2) discharges for an end-of-month count of four (4).

MENTAL HEALTH SERVICES, *continued*

Staffing: The following Mental Health Services and SATP positions were vacant in November and December 2018:

Positions	FTE's*	Nov.	Dec.
Psychologists	14	6	6
Social Workers	31	13	12
Advisors	64	10	9
Substance Abuse Program Leaders	35	1	1
Administrative Specialists/Analysts	17	3	2
Psychological Examiners	2	1	1

*FTE refers to authorized Full Time Equivalent positions.

ADDITIONAL MENTAL HEALTH AND MEDICAL INFORMATION**Self-Study Classes:**

Classes	# of Participants	# Completed	Waiting List
Anger Management	214	140	951
Thinking Errors	222	155	895
Substance Abuse Education	201	167	299
Communication Skills	248	215	982
Domestic Violence	94	83	301
Victims of Domestic Violence	3	3	27
Stress Management	216	200	912
Parenting	250	182	463

Suicide: There were ninety-four (94) suicidal threats during December. There were nine (9) attempts resulting in zero (0) deaths.

Outpatient: There were two thousand seventy-five (2,075) inmates on the mental health medical log at the beginning of December. Mental Health staff conducted the following contacts during December:

Case Management Contacts	1,950
Requests for Interviews	1,271
Testing	9
Intakes	785
Unit Requests	846
Pre-Lockup Reviews	463
Routine Restrictive Housing Reviews	738
Restrictive Housing Rounds	19,653
PREA Evaluations	75
Routine Follow-up	173
834 Requests	25

County Mental Health Requests: During December, there were seventy (70) requests of a mental health nature received. Thirty-three (33) inmates were fast-tracked to ADC.

County Medical Health Requests: During December, there were two hundred thirty-three (233) requests of a medical nature received. Three (3) inmates were fast-tracked to ADC.

Monetary Sanctions: Sanction reimbursements for November were \$15,850.00.

Deaths: There were five (5) inmate deaths during the month of December; two (2) were claimed, two (2) were cremated, and one (1) was buried.

CCS: See attachment for CCS's report regarding outside beds and emergency room visits.

Medical Grievances: In December, there were one hundred sixty-one (161) appeals of medical grievances received and one hundred sixty-six (166) appeals were answered; fifteen (15) of those were found to be with merit and five (5) with merit but resolved.

SEX OFFENDER ASSESSMENT**Assessments Completed:**

Risk Level	December	September 1999 through December 2018
Level 1	3	1,187
Level 2	10	7,419
Level 3	11	6,765
Level 4	0	649
Default 3	3	*
Total	27	16,020
*Default Level 3's are included in the total number of Level 3's to date.		

ACIC Numbers:

The total number of sex offenders registered from September 1999 through December 2018:

Compliant	8,028
Delinquent	1,051
Confined	3,200
Out-of-State	3,451
Address Unknown	205
Deported	187
Incapacitated	86
Out of USA	7
Total	16,215

Due to a change in Arkansas law, deceased offenders no longer remain on the registry. SOCNA has been notified by ACIC of eleven (11) offenders removed due to death since 1/1/2018.

THINK LEGACY

Unit	Slots	Completed	Removed	Assigned
Cummins	55	4	6	48
Delta Regional	24	1	0	24
East Ark. Regional	50	3	2	48
Ester	107	13	0	67
Grimes	56	6	0	56
Hawkins (Female)	40	5	0	38
McPherson	68	2	3	68
North Central	59	7	4	55
Ouachita River	46	7	3	35
Tucker	55	4	5	55
Varner	49	5	2	48
Wrightsville	48	5	0	43
Total	657	62	25	585

There are one hundred forty-two (142) males and one hundred thirty-eight (138) females on the Think Legacy waiting list. A total of 280 inmates are on the waiting list. All Think Legacy applicants are within eighteen (18) months of their TE or discharge date.

The average time on the waiting list is approximately sixty (60) days. There were one hundred forty-two and three quarters (142.75) volunteer hours recorded for the month of December.

Sixty-two (62) inmates graduated from the various Think Legacy Programs. The Hawkins Unit hosted a workshop entitled, "Girl, Wash Your Face" from December 10th–14th, a Resource Fair on the 12th, and a Cooking Matters training on the 19th.

PAWS IN PRISON**Currently Enrolled in Training:**

Maximum Security Unit	9
Tucker Unit	6
Hawkins Unit	4
Randall L. Williams Unit	4
Ouachita River Unit	6
North Central Unit	8
Total	37

Completed Training:

December 2018	14
YTD 2018	219
Since Inception (Dec. 2011)	1,241
Dogs Currently in Foster: (<i>Graduated but not adopted</i>)	4
Volunteer Hours	16
YTD Volunteer Hours	219

CONSTRUCTION/MAINTENANCEPROJECT UPDATES

Central Office: The contract for roof replacement was awarded and work is 50% complete with the contractor tearing off the old roof at night and the day crew replacing what was torn off.

Cummins Unit: DBA has approved and issued the plans for a new emergency generator. The project to change the doors in Barracks 13 to solid doors has been completed. The estimates for changing existing metal desks to concrete are being prepared. A contract was awarded to WD&D to design the precast recreation yards. The architect is working on plans to submit to DBA. A new body scanner was installed in the sally port building. A shakedown room is being built to replace the room now housing the new scanner.

Cummins Poultry: The generators are being tested weekly.

Cummins School: The building has been erected with exterior walls, interior stud walls, insulation and roof all in place. Sheetrock and electrical is being installed.

Delta Unit: Entegrity has completed all lighting and plumbing upgrades. The compost shed has been completed and compost equipment has been installed. Wood pellets were delivered and staff has been trained on the compost operation. Mechanical equipment and HVAC replacement has been completed.

PROJECT UPDATES, *continued*

East Arkansas Regional Unit: The architect submitted plans for the precast recreation yards to DBA, who issued approval to proceed. The plans were revised to include a walkway for officers. Work with a vendor on precast pricing is underway. The budget cost for the metal roof structure was received, and the project budget is being completed. Two emergency generators and transfer switches have been installed and are now waiting on Entergy to make the final connection. Entegrity has completed all lighting and plumbing upgrades and compost equipment installation; as well as wood pellet delivery and staff training. The solar array has been installed and is operational. Work on the HVAC upgrades is 75% complete, and boilers are being replaced. Repairs to the sewer lift station have been completed and it is now operational. Repair and replacement of serving line components is complete and the serving line is operational. A new body scanner location has been completed. A plan to add a replacement shakedown room is now being explored.

Maximum Security Unit: Construction crews are helping maintenance with various repairs. DBA has approved the plans for an emergency generator and a bid package will be prepared. A contract was awarded to the architect who is now preparing plans for the precast recreation yards. Work continues on repairs of roof leaks. Installation of replacement skylights, which were the source of numerous roof leaks, continues. A final shipment of skylights are due to arrive. Additionally, a fire hydrant is being installed and leaks in an 8" fire main are being repaired.

McPherson Unit: The architect completed the design of the additions to the visitation and administration areas. The plans have been approved to proceed by DBA and the project is being scheduled with the Construction Supervisor.

Ouachita River Correctional Unit: Gravel operations continue and the rock crusher is operational. Repairs to the lift station have been completed. Two new 20 hp pumps are operational, and interior piping was replaced with six-inch stainless steel. Design review comments for a new dog kennel were received from DBA and a response is being drafted.

Pine Bluff Unit: Construction continues on Barracks 9 to reinforce the security of exterior walls by adding concrete blocks to the inside of the exterior walls. The request to use excess funds remaining from the 9D project to add concrete walls, replace lighting and add stainless steel to the shower areas for the remainder of Barracks 9 was approved. Work on Barracks 9A is underway and then will proceed to Barracks 9B and 9C, in that order, upon completion.

Tucker Unit: Regular monitoring of the waste water plant continues with repairs and adjustments being made as needed to remain in compliance. All media for the seven filters has been changed out, passed testing, and the filters are operational. The backwash frequency and duration was changed resulting in less iron in the water. Engineers have prepared plans to add new water filters and aeration for the water plant. Both the Arkansas Department of Health and DBA have approved the plans. A bid package for the new pressure filters is being prepared, along with plans for the building of filters. Partial funding of the total plant renovation was received from the Governor's Office. Documents for selecting a design firm are being prepared. A construction crew is helping maintenance with various repairs. A room to accommodate a new body scanner, adjacent to the sally port building, was completed.

Varner Unit: Cell door repairs in the Supermax area have been completed. The crew is now going back to repair food traps. Demolition of the isolation recreation yards was completed and four have been rebuilt. All panels were built, stored in the Weld Shop and are being shipped to Varner as weather permits and being installed. Bull pens for the open barracks are being built and installed. All of the remaining bullpens have been completed. The final terminations and the programming of door sensors is underway, with a planned completion date of January 25th. A room adjacent to the sally port building, to accommodate a new body scanner, was completed.

Wrightsville Unit: DBA has approved the plans for new emergency generators and bids were received, awarded, and submittals reviewed and approved. Crews have been working on electrical repairs. The contract to replace the Industry Warehouse roof was approved. Materials for the roofing project were delivered and crews are installing the roof.

Wrightsville Hawkins Unit: DBA approved the plans for an additional generator for the kitchen and lighting. A bid package is being prepared.

CONSTRUCTION/MAINTENANCE PERSONNEL UPDATE

The following Construction/Maintenance position(s) were vacant at the end of December 2018:

- 2 Construction Project Specialists
- 1 Construction Project Supervisor
- 1 Construction Security Corporal
- 1 Construction Lieutenant

2018 INFORMAL GRIEVANCE REPORT

<i>Month</i>	BENTON	HAWK/M	HAWK/F	WRTS	EARU & MX	GRIMES	RLW	MCWR	MCPH	MSU	NCU	PBU	NWA	TU	TRCC	VSMX	VU	CU	ORCU	Ester	DRU	Bowie Cty	TOTAL
JAN	3	13	28	71	434	162	47	0	337	202	105	60	0	128	1	591	82	240	318	45	191	67	3,125
FEB	3	20	34	77	283	160	26	1	237	160	74	43	0	109	1	507	63	256	267	31	211	59	2,622
MAR	1	5	27	74	430	158	44	0	343	192	192	37	1	91	0	555	76	223	253	51	155	61	2,969
APR	2	9	15	114	410	171	60	0	315	202	138	42	0	121	2	359	112	191	318	43	122	69	2,815
MAY	0	19	20	103	569	169	69	0	357	198	140	25	1	150	0	416	59	189	348	26	124	72	3,054
JUN	0	20	28	109	471	189	38	0	289	167	184	35	0	142	1	452	53	166	438	34	150	51	3,017
JUL	0	25	39	86	471	230	33	0	323	162	214	25	1	99	1	469	64	236	405	47	108	4	3,042
AUG	1	25	24	89	491	233	31	0	116	168	213	35	1	76	0	614	86	253	345	42	139	41	3,023
SEPT	1	15	17	90	262	266	37	0	218	154	137	3	0	157	0	544	69	192	388	42	106	65	2,763
OCT	0	24	30	92	522	295	10	0	433	132	138	64	0	100	0	589	106	195	271	33	128	55	3,217
NOV	2	17	5	83	374	248	33	0	224	165	117	22	0	83	5	613	75	102	337	30	95	56	2,686
DEC	0	30	34	67	304	106	27	0	228	183	119	25	0	105	0	455	72	172	307	28	100	48	2,410
TOTAL	13	222	301	1,055	5,021	2,387	455	1	3,420	2,085	1,771	416	4	1,361	11	6,164	917	2,415	3,995	452	1,629	648	34,743

2018 FORMAL GRIEVANCE REPORT

<i>Month</i>	BENTON	HAWK/M	HAWK/F	WRTS	EARU & MX	GRIMES	RLW	MCWR	MCPH	MSU	NCU	PBU	NWA	TU	TRCC	VSMX	VU	CU	ORCU	Ester	DRU	Bowie Cty	TOTAL
JAN	3	10	13	21	369	102	13	0	148	217	59	20	0	108	0	329	58	122	174	21	80	18	1,885
FEB	3	4	5	25	334	87	17	1	131	195	28	43	0	79	0	290	55	123	160	8	82	18	1,688
MAR	0	4	9	33	394	96	23	0	158	212	87	19	1	50	0	322	66	130	253	16	76	19	1,968
APR	2	5	5	61	402	85	29	0	122	211	59	5	0	94	0	247	89	86	135	12	66	18	1,733
MAY	0	11	8	38	453	82	30	0	159	237	64	13	1	93	0	264	54	102	121	31	62	24	1,847
JUN	0	11	16	42	441	108	16	0	169	208	59	7	0	108	1	270	47	91	121	21	67	10	1,813
JUL	0	8	11	35	440	118	14	0	157	177	86	13	1	84	1	284	55	128	135	28	54	7	1,836
AUG	1	8	1	29	435	142	10	0	229	215	128	15	1	53	1	380	78	171	82	17	86	5	2,087
SEPT	1	5	6	37	397	128	11	0	115	172	65	3	0	100	0	309	65	103	54	17	50	18	1,656
OCT	0	7	8	50	473	154	34	0	205	133	65	15	0	80	0	357	84	92	164	27	71	16	2,035
NOV	0	5	5	26	354	148	9	0	111	153	58	20	0	71	10	343	57	56	163	13	32	16	1,650
DEC	0	15	10	32	319	91	16	0	75	146	62	11	0	99	0	271	56	74	179	17	51	10	1,534
TOTAL	10	93	97	429	4,811	1,341	222	1	1,779	2,276	820	184	4	1,019	13	3,666	764	1,278	1,741	228	777	179	21,732

INMATE INSTITUTIONAL GRIEVANCE APPEAL REPORT – DECEMBER 2018

	Acknowledged	Rejected	Processed W/O Merit	Processed W/ Merit
Benton Unit	0	0	0	0
Benton Work Release	0	2	0	0
Bowie County Texas Correctional Facility	2	0	4	0
Cummins Unit	12	2	15	0
Cummins Modular Unit	0	0	0	0
Delta Regional Unit	8	2	7	0
East Arkansas Regional Unit	6	6	8	0
East Arkansas Regional Max Unit	64	3	96	1
Ester Unit	0	0	1	1
Grimes Unit	17	4	27	0
Maximum Security Unit	40	1	27	0
McPherson Unit	8	12	17	0
McPherson Mental Health Residential Program Unit	3	1	2	0
Mississippi County Work Release Center	0	0	0	0
Northwest Arkansas Work Release Center	0	0	0	0
North Central Unit	2	5	10	0
Ouachita River Correctional Unit	20	2	25	0
ORCU Hospital	0	0	0	0
ORCU New Commitment	4	2	4	0
ORCU Mental Health Residential Program Unit	0	0	0	0
Pine Bluff Unit	2	0	3	0
Pine Bluff Re-Entry	0	0	0	0
Randall L. Williams Correctional Facility	1	0	0	0
Texarkana Regional Correctional Center	0	0	0	0
Tucker Unit	7	3	11	0
Varner Super Max	87	18	73	2
Varner Unit	5	3	11	0
Wrightsville Unit	4	0	4	0
Hawkins Center	0	1	0	0
Hawkins for Males	2	0	2	0
Hawkins SPU	0	0	0	0
Total	294	67	347	4

ADMISSIONS AND RELEASES – DECEMBER 2018

<u>Admissions</u>	<u>Male</u>	<u>Female</u>	<u>Total</u>
Asian	3	0	3
Black	208	11	219
Hispanic	12	2	14
Native American Indian	3	0	3
White	385	80	465
Other	1	0	1
Unknown	1	0	1
Total	613	93	706

<u>Releases</u>	<u>Male</u>	<u>Female</u>	<u>Total</u>
Asian	2	0	2
Black	149	13	162
Hispanic	23	2	25
Native American Indian	0	2	2
White	243	30	273
Other	2	0	2
Unknown	0	0	0
Total	419	47	466

ADC INMATE POPULATION GROWTH 2000-2026 - DECEMBER 2018

Updated 12/31/2018

Mo.	2000	2001	2002	2003	2004	2005	2006	2007	2008	2009	2010	2011	2012	2013	2014	2015	2016	2017	2018
Jan.	11,984	11,908	12,402	13,015	13,105	13,595	13,481	13,839	14,518	14,796	15,334	16,312	15,134	14,815	17,481	18,142	17,785	17,824	18,201
Feb.	12,169	12,022	12,529	13,054	13,166	13,783	13,633	14,012	14,603	14,883	15,374	16,209	14,990	15,008	17,438	18,082	17,625	17,608	17,998
March	12,006	12,033	12,299	13,108	13,088	13,418	13,534	13,772	14,580	14,843	15,290	16,095	14,964	14,665	17,395	18,233	17,573	17,666	18,089
April	12,069	12,167	12,465	13,213	13,323	13,469	13,554	13,851	14,769	14,937	15,570	16,172	15,124	14,850	17,604	18,703	17,815	17,798	18,227
May	12,109	12,384	12,558	13,463	13,556	13,528	13,711	14,146	14,880	15,146	15,694	16,062	15,132	15,074	17,593	18,693	17,769	17,652	17,945
June	12,005	12,108	12,439	13,418	13,389	13,251	13,430	13,915	14,700	15,025	15,564	15,554	14,832	14,825	17,340	18,813	17,973	17,963	17,972
July	12,030	12,190	12,622	13,509	13,528	13,286	13,560	14,082	14,868	15,195	15,807	15,519	14,879	15,379	17,522	18,870	18,130	18,180	18,005
August	12,087	12,371	12,815	13,565	13,632	13,419	13,646	14,224	15,100	15,385	15,829	15,240	14,675	16,103	17,549	18,806	17,919	18,051	17,751
September	11,983	12,289	12,774	13,341	13,516	13,237	13,652	14,217	14,850	15,285	16,025	15,172	14,724	16,412	17,605	18,549	18,026	18,179	17,865
October	12,119	12,348	12,942	13,341	13,584	13,363	13,775	14,349	14,836	15,381	16,311	15,271	14,856	16,993	17,880	18,430	18,127	18,348	17,943
November	12,094	12,408	13,162	13,408	13,706	13,587	13,913	14,437	15,025	15,340	16,460	15,205	14,625	17,168	17,848	17,981	17,573	17,973	17,666
December	11,856	12,333	12,845	13,106	13,470	13,338	13,728	14,315	14,716	15,199	16,204	15,062	14,654	17,235	17,874	17,707	17,537	18,078	17,799
Net Ann. Inc.	29	477	512	261	364	-132	390	587	401	483	1,005	-1,142	-408	2,581	639	-167	-170	541	-279
Avg. Mo. Inc.	2	40	43	22	30	-11	33	49	33	40	84	-95	-34	215	53	-14	-14	45	-23

Population is total jurisdictional count at end of each month. Population at end of month December 1999 was 11,827.

Average monthly population increase for past fifteen years 2004 - 2018 is 26

Average monthly population increase for past ten years Jan. 2009 - Dec 2018 is 26

Average monthly population increase for past five years 2014 - 2018 is 9

Projected at Growth of 26 per Month

	2008	2009	2010	2011	2012	2013	2014	2015	2016	2017	2018	2019	2020	2021	2022	2023	2024	2025	2026
Mo.	Actual	Actual	Actual	Actual	Actual	Actual	Actual	Actual	Actual	Actual	Actual	Proj.	Proj.	Proj.	Proj.	Proj.	Proj.	Proj.	Proj.
January	14,518	14,796	15,334	16,312	15,134	14,815	17,481	18,142	17,785	17,824	18,201	17,825	18,137	18,449	18,761	19,073	19,385	19,697	20,009
February	14,603	14,883	15,374	16,209	14,990	15,008	17,438	18,082	17,625	17,608	17,998	17,851	18,163	18,475	18,787	19,099	19,411	19,723	20,035
March	14,580	14,843	15,290	16,095	14,964	14,665	17,395	18,233	17,573	17,666	18,089	17,877	18,189	18,501	18,813	19,125	19,437	19,749	20,061
April	14,769	14,937	15,570	16,172	15,124	14,850	17,604	18,703	17,815	17,798	18,227	17,903	18,215	18,527	18,839	19,151	19,463	19,775	20,087
May	14,880	15,146	15,694	16,062	15,132	15,074	17,593	18,693	17,769	17,652	17,945	17,929	18,241	18,553	18,865	19,177	19,489	19,801	20,113
June	14,700	15,025	15,564	15,554	14,832	14,825	17,340	18,813	17,973	17,963	17,972	17,955	18,267	18,579	18,891	19,203	19,515	19,827	20,139
July	14,868	15,195	15,807	15,519	14,879	15,379	17,522	18,870	18,130	18,180	18,005	17,981	18,293	18,605	18,917	19,229	19,541	19,853	20,165
August	15,100	15,385	15,829	15,240	14,675	16,103	17,549	18,806	17,919	18,051	17,751	18,007	18,319	18,631	18,943	19,255	19,567	19,879	20,191
September	14,850	15,285	16,025	15,172	14,724	16,412	17,605	18,549	18,026	18,179	17,865	18,033	18,345	18,657	18,969	19,281	19,593	19,905	20,217
October	14,836	15,381	16,311	15,271	14,856	16,993	17,880	18,430	18,127	18,348	17,943	18,059	18,371	18,683	18,995	19,307	19,619	19,931	20,243
November	15,025	15,340	16,460	15,205	14,625	17,168	17,848	17,981	17,573	17,973	17,666	18,085	18,397	18,709	19,021	19,333	19,645	19,957	20,269
December	14,716	15,199	16,204	15,062	14,654	17,235	17,874	17,707	17,537	18,078	17,799	18,111	18,423	18,735	19,047	19,359	19,671	19,983	20,295
Net Ann. Inc.	401	483	1,005	-1,142	-408	2,581	639	-167	-170	541	-279	312	312	312	312	312	312	312	312
Ave. Mo. Inc.	33	40	84	-95	-34	215	53	-14	-14	45	-23	26	26	26	26	26	26	26	26

MONTHLY POPULATION AVERAGES - DECEMBER 2018

Unit/Center	12/3	12/4	12/5	12/6	12/7	12/10	12/11	12/12	12/13	12/14	12/17	12/18	12/19	12/20	12/21	12/24	12/25	12/26	12/27	12/28	12/31	AVG
Benton	335	334	332	333	337	337	336	335	334	335	335	337	342	341	342	341	341	341	341	341	341	338
Cummins	1,623	1,631	1,634	1,639	1,638	1,635	1,644	1,642	1,643	1,643	1,643	1,649	1,644	1,654	1,659	1,658	1,658	1,658	1,657	1,655	1,652	1,646
Delta	615	615	613	612	611	616	612	612	622	615	623	619	615	602	607	607	607	607	617	616	612	613
E AR Reg	1,645	1,645	1,655	1,663	1,666	1,665	1,670	1,668	1,660	1,658	1,677	1,674	1,666	1,671	1,668	1,671	1,671	1,671	1,670	1,674	1,673	1,666
Ester	585	582	585	579	579	578	581	580	585	580	583	584	587	584	585	582	582	582	581	578	578	582
Grimes	1,063	1,060	1,065	1,065	1,066	1,061	1,060	1,065	1,065	1,074	1,070	1,066	1,070	1,061	1,063	1,067	1,067	1,067	1,065	1,065	1,067	1,065
Max Sec	552	551	550	550	549	546	546	546	547	546	546	546	546	545	544	544	544	544	544	544	544	546
McPherson	965	966	969	971	976	982	987	985	982	983	983	987	990	989	998	999	999	999	997	996	1,001	986
MCWRC	133	133	133	133	132	132	138	138	138	137	137	137	139	139	137	136	136	136	135	131	131	135
N Central	820	818	810	819	819	820	820	818	828	821	821	823	831	832	830	823	823	823	822	834	833	823
NWAWRC	99	99	100	100	100	98	98	99	100	100	100	100	100	99	99	100	100	100	100	100	100	100
Ouachita River	1,765	1,772	1,777	1,787	1,811	1,827	1,824	1,836	1,844	1,845	1,811	1,819	1,818	1,821	1,819	1,830	1,830	1,830	1,837	1,832	1,836	1,818
Randall L Williams	548	554	560	560	565	560	565	565	563	559	564	565	563	560	558	561	561	561	561	563	564	561
Pine Bluff	476	479	481	480	481	478	475	476	476	478	477	481	486	485	485	483	483	483	484	484	483	481
PB Reentry	47	47	47	47	50	53	54	54	54	54	54	54	54	52	52	52	52	52	52	52	52	52
TRCC	114	114	114	114	113	118	122	122	122	121	123	125	125	125	125	125	125	125	124	124	124	121
Tucker	969	982	991	990	988	987	986	987	983	985	979	985	979	978	979	979	979	979	979	985	984	983
Varner	1,716	1,714	1,714	1,719	1,718	1,718	1,718	1,719	1,722	1,722	1,730	1,729	1,726	1,726	1,725	1,720	1,720	1,720	1,716	1,720	1,719	1,721
Wrightsville	1,290	1,290	1,292	1,284	1,271	1,284	1,283	1,281	1,283	1,287	1,290	1,291	1,293	1,292	1,289	1,292	1,292	1,292	1,289	1,282	1,284	1,287
Total ADC	15,360	15,386	15,422	15,445	15,470	15,495	15,519	15,528	15,551	15,543	15,546	15,571	15,574	15,556	15,564	15,570	15,570	15,570	15,571	15,576	15,578	15,522
ALETA	19	19	19	19	19	19	19	19	19	18	18	18	18	18	18	18	18	18	18	18	18	18
Ar State Police	63	63	63	63	63	63	63	63	61	61	61	61	60	60	60	60	60	60	60	60	60	61
Co Jail / M	1,462	1,453	1,439	1,433	1,437	1,419	1,415	1,424	1,407	1,408	1,384	1,369	1,392	1,388	1,380	1,371	1,371	1,371	1,369	1,379	1,391	1,403
Co Jail / F	76	79	82	86	95	90	90	89	89	85	88	89	92	89	83	81	81	81	80	85	82	85
Total Co Jail BK	1,538	1,532	1,521	1,519	1,532	1,509	1,505	1,513	1,496	1,493	1,472	1,458	1,484	1,477	1,463	1,452	1,452	1,452	1,449	1,464	1,473	1,488
Bowie Co., TX	330	330	330	330	330	331	331	331	331	328	326	326	326	333	333	333	333	333	333	333	333	331
309/M	241	244	245	245	244	244	244	243	241	243	241	239	239	239	239	239	239	239	240	243	243	242
309/F	69	69	69	69	69	72	72	72	72	72	72	72	72	72	72	72	72	72	72	72	71	71
Total Act 309	310	313	314	314	313	316	316	315	313	315	313	311	311	311	311	311	311	311	312	315	315	313
Total Non ADC	2,260	2,257	2,247	2,245	2,257	2,238	2,234	2,241	2,220	2,215	2,190	2,174	2,199	2,199	2,185	2,174	2,174	2,174	2,172	2,190	2,199	2,212
Total	17,620	17,643	17,669	17,690	17,727	17,733	17,753	17,769	17,771	17,758	17,736	17,745	17,773	17,755	17,749	17,744	17,744	17,744	17,743	17,766	17,777	17,734

FISCAL YEAR 2019 COUNTY JAIL BACKUP - DECEMBER 2018

DAY		Jul-18		Aug-18		Sep-18		Oct-18		Nov-18		Dec-18
1	*	1,575		1,618	*	1,646		1,531		1,634	*	1,578
2		1,578		1,624	*	1,646		1,531		1,659	*	1,578
3		1,594		1,631		1,613		1,520	*	1,659		1,538
4		1,577	*	1,631		1,613		1,537	*	1,659		1,532
5		1,577	*	1,631		1,583		1,535		1,646		1,521
6		1,548		1,649		1,567	*	1,535		1,654		1,519
7	*	1,548		1,654		1,552	*	1,535		1,644		1,532
8	*	1,548		1,652	*	1,552		1,535		1,633	*	1,532
9		1,547		1,642	*	1,552		1,527		1,602	*	1,532
10		1,532		1,665		1,517		1,524	*	1,602		1,509
11		1,571	*	1,665		1,508		1,557	*	1,602		1,505
12		1,584	*	1,665		1,501		1,578		1,600		1,513
13		1,609		1,670		1,503	*	1,578		1,600		1,496
14	*	1,609		1,671		1,514	*	1,578		1,618		1,493
15	*	1,609		1,660	*	1,514		1,574		1,626	*	1,493
16		1,598		1,676	*	1,514		1,571		1,633	*	1,493
17		1,589		1,681		1,505		1,573	*	1,633		1,472
18		1,569	*	1,681		1,496		1,583	*	1,633		1,458
19		1,563	*	1,681		1,498		1,606		1,633		1,484
20		1,559		1,690		1,511	*	1,606		1,620		1,477
21	*	1,559		1,683		1,494	*	1,606		1,624		1,463
22	*	1,559		1,677	*	1,494		1,606		1,657	*	1,463
23		1,553		1,685	*	1,494		1,599		1,657	*	1,463
24		1,560		1,701		1,506		1,619	*	1,657		1,452
25		1,552	*	1,701		1,524		1,612	*	1,657		1,452
26		1,553	*	1,701		1,542		1,634		1,656		1,452
27		1,597		1,700		1,527	*	1,634		1,650		1,449
28	*	1,597		1,679		1,532	*	1,634		1,609		1,464
29	*	1,597		1,669	*	1,532		1,602		1,591	*	1,464
30		1,623		1,657	*	1,532		1,595		1,578	*	1,464
31		1,629		1,646				1,621				1,473
Avg Daily Backup		1,576		1,666		1,536		1,577		1,631		1,494

Notes: Totals do not include 309 Contracts in County Jails (maximum of 336)

Fiscal Year Average as of December 31, 2018 - 1,580

Short-Term Revocation Program Fiscal Year Average as of December 31, 2018 - 536

CALENDAR YEAR 2018 COUNTY JAIL BACKUP

DAY	Jan-18	Feb-18	Mar-18	Apr-18	May-18	Jun-18	Jul-18	Aug-18	Sep-18	Oct-18	Nov-18	Dec-18
1	1,490	1,545	1,612 *	1,711	1,815	1,643 *	1,575	1,618 *	1,646	1,531	1,634	1,578
2	1,490	1,532	1,596	1,699	1,797 *	1,643	1,578	1,624 *	1,646	1,531	1,659	1,578
3	1,470 *	1,532 *	1,596	1,711	1,808 *	1,643	1,594	1,631	1,613	1,520	1,659	1,538
4	1,469 *	1,532 *	1,596	1,701	1,843	1,638	1,577 *	1,631	1,613	1,537	1,659	1,532
5	1,464	1,563	1,575	1,696 *	1,843	1,589	1,577 *	1,631	1,583	1,535	1,646	1,521
6	* 1,464	1,555	1,534	1,730 *	1,843	1,598	1,548	1,649	1,567 *	1,535	1,654	1,519
7	* 1,464	1,548	1,565 *	1,730	1,821	1,605 *	1,548	1,654	1,552 *	1,535	1,644	1,532
8	1,471	1,542	1,602 *	1,730	1,788	1,607 *	1,548	1,652 *	1,552	1,535	1,633	1,532
9	1,484	1,550	1,608	1,740	1,802 *	1,607	1,547	1,642 *	1,552	1,527	1,602	1,532
10	1,460 *	1,550 *	1,608	1,733	1,796 *	1,607	1,532	1,665	1,517	1,524	1,602	1,509
11	1,414 *	1,550 *	1,608	1,739	1,807	1,605	1,571 *	1,665	1,508	1,557	1,602	1,505
12	1,411	1,554	1,612	1,766 *	1,807	1,577	1,584 *	1,665	1,501	1,578	1,600	1,513
13	* 1,411	1,552	1,648	1,793 *	1,807	1,577	1,609	1,670	1,503 *	1,578	1,600	1,496
14	* 1,411	1,573	1,677 *	1,793	1,815	1,608 *	1,609	1,671	1,514 *	1,578	1,618	1,493
15	1,428	1,568	1,656 *	1,793	1,821	1,578 *	1,609	1,660 *	1,514	1,574	1,626	1,493
16	1,428	1,587	1,646	1,812	1,824 *	1,578	1,598	1,676 *	1,514	1,571	1,633	1,493
17	1,410 *	1,587 *	1,646	1,804	1,851 *	1,578	1,589	1,681	1,505	1,573	1,633	1,472
18	1,453 *	1,587 *	1,646	1,793	1,859	1,552	1,569 *	1,681	1,496	1,583	1,633	1,458
19	1,478	1,590	1,656	1,808 *	1,859	1,521	1,563 *	1,681	1,498	1,606	1,633	1,484
20	* 1,478	1,590	1,656	1,793 *	1,859	1,546	1,559	1,690	1,511 *	1,606	1,620	1,477
21	* 1,478	1,610	1,659 *	1,793	1,859	1,538 *	1,559	1,683	1,494 *	1,606	1,624	1,463
22	1,499	1,648	1,653 *	1,793	1,843	1,561 *	1,559	1,677 *	1,494	1,606	1,657	1,463
23	1,490	1,633	1,682	1,761	1,839 *	1,561	1,553	1,685 *	1,494	1,599	1,657	1,463
24	1,491 *	1,633 *	1,682	1,745	1,843 *	1,561	1,560	1,701	1,506	1,619	1,657	1,452
25	1,532 *	1,633 *	1,682	1,772	1,839	1,534	1,552 *	1,701	1,524	1,612	1,657	1,452
26	1,561	1,619	1,659	1,769 *	1,839	1,522	1,553 *	1,701	1,542	1,634	1,656	1,452
27	* 1,561	1,626	1,669	1,783 *	1,839	1,513	1,597	1,700	1,527 *	1,634	1,650	1,449
28	* 1,561	1,634	1,657 *	1,783	1,774	1,531 *	1,597	1,679	1,532 *	1,634	1,609	1,464
29	1,553		1,689 *	1,783	1,774	1,575 *	1,597	1,669 *	1,532	1,602	1,591	1,464
30	1,553		1,711	1,815	1,738 *	1,575	1,623	1,657 *	1,532	1,595	1,578	1,464
31	1,538		1,711		1,695		1,629	1,646		1,621		1,473
Avg Daily Backup	1,480	1,579	1,639	1,762	1,818	1,579	1,576	1,666	1,536	1,577	1,631	1,494

Notes: Totals do not include 309 Contracts in County Jails (maximum of 336)

STTG UNIT COUNTS – DECEMBER 2018



Arkansas Department of Correction

Unit	Beginning Total	Confirmed	Suspected	In	Out	Paroled	Removed	Ending Total	Total Unit Population	Unit % of STTG's
Benton	84	0	1	2	5	0	0	82	351	23.36%
Cummins	495	0	0	25	17	5	0	498	1,662	29.96%
Delta	150	0	0	29	7	7	0	165	623	26.48%
EARU	568	0	0	42	16	9	0	585	1,674	34.95%
Grimes	325	4	0	41	22	20	0	328	1,062	30.89%
Hawkins	50	0	0	1	1	0	0	50	451	11.09%
Max	254	0	0	9	11	0	0	252	543	46.41%
Mcperson	30	0	0	6	0	0	0	36	994	3.62%
MCWR	39	0	0	2	2	1	0	38	129	29.46%
NCU	219	0	0	11	17	0	0	213	827	25.76%
NWAWR	12	0	0	0	1	0	0	11	99	11.11%
ORCU	432	0	0	32	38	13	0	415	1,591	26.08%
ORCU Intake	35	125	0	0	113	0	0	47	232	20.26%
PB/Ester	230	0	0	40	23	12	1	234	1,118	20.93%
RLW	152	0	0	30	19	0	0	163	557	29.26%
TWR	29	0	0	10	6	0	0	33	127	25.98%
Tucker	289	0	0	22	23	0	0	288	979	29.42%
Varner	713	0	0	78	62	26	0	703	1,724	40.78%
Wrightsville	250	2	0	32	15	16	0	253	843	30.01%
Total	4,356	131	1	412	398	109	1	4,394	15,586	28.19%

ORCU Intake brought in 125 new STTG members into ADC last Month.

STTG DISCIPLINARY REPORT – DECEMBER 2018



Arkansas Department of Correction

Unit	STTG Incidents	STTG Suspected Incidents	Total Unit Disciplinary	Disciplinary Involving STTG	Percentage
Benton	0	0	14	5	35.71%
Cummins	0	0	265	102	38.49%
Delta	0	0	106	30	28.30%
EARU	0	0	355	160	45.07%
Grimes	4	1	155	64	41.29%
Hawkins	0	0	14	1	7.14%
Max	0	0	91	68	74.73%
Mcpherson	0	0	136	5	3.68%
MCWR	0	0	5	2	40.00%
NCU	2	1	79	33	41.77%
NWAWR	0	0	12	1	8.33%
ORCU	0	0	140	62	44.29%
ORCU Intake	0	0	6	2	33.33%
PB/Ester	0	0	64	29	45.31%
RLW	0	0	31	16	51.61%
TWR	0	0	7	2	28.57%
Tucker	1	0	50	24	48.00%
Varner	0	0	238	116	48.74%
Wrightsville	0	0	59	27	45.76%
Total	7	2	1,827	749	41.00%

STTG COUNTS BY STTG SET – DECEMBER 2018



Arkansas Department of Correction

STTG Set	Benton	Cummins	Delta	EARU	Grimes	Hawkins	Max	Mcperson	MCWR	NCU	NWAWR	ORCU	Intake	PB	RLW	TWR	Tucker	Varner	Wrightsville	Total
Asian	2	0	0	1	2	0	0	0	1	0	0	1	0	3	0	1	1	1	0	13
Bloods	12	114	14	104	57	6	56	3	6	35	3	88	4	38	21	6	65	136	52	820
Crips	8	68	20	65	34	3	31	6	5	18	0	53	3	26	14	6	38	100	20	518
Folk	7	38	13	56	26	5	35	7	1	12	3	7	0	13	7	1	20	77	22	350
GD	10	119	45	127	77	9	43	2	8	27	0	108	13	51	31	7	67	141	57	942
Mexican	3	13	7	17	12	3	3	2	0	6	2	14	3	9	3	0	7	29	5	138
Motorcycle	0	2	1	2	3	0	3	1	0	1	0	1	0	2	1	0	5	1	1	24
Other	3	13	10	11	11	0	5	2	0	8	0	11	2	11	5	0	6	21	7	126
People	3	16	6	15	11	0	14	4	0	9	0	18	3	20	9	0	6	24	7	165
Unknown	0	2	2	7	7	2	2	0	0	5	0	11	2		7	0	1	5	7	60
W/S	20	30	28	50	35	4	9	6	4	46	3	43	6	31	22	7	41	43	24	452
NAE	7	24	3	33	13	3	17	2	5	5	0	20	5	9	19	1	13	36	18	233
WAR	6	46	10	73	24	1	19	1	4	28	0	24	5	11	13	1	9	55	24	354
AC	1	8	3	11	15	7	13	0	1	5	0	11	1	5	8	2	2	25	6	124
AB	0	5	3	13	1	7	2	0	3	8	0	5	0	5	3	1	7	9	3	75
Total	82	498	165	585	328	50	252	36	38	213	11	415	47	234	163	33	288	703	253	4,394

Key:

GD = Gangster Disciples

W/S = White Supremacist

NAE = New Aryan Empire

WAR = White Aryan Resistance

AC = Aryan Circle

AB = Aryan Brotherhood

ADC INPATIENT AND EMERGENCY ROOM UTILIZATION

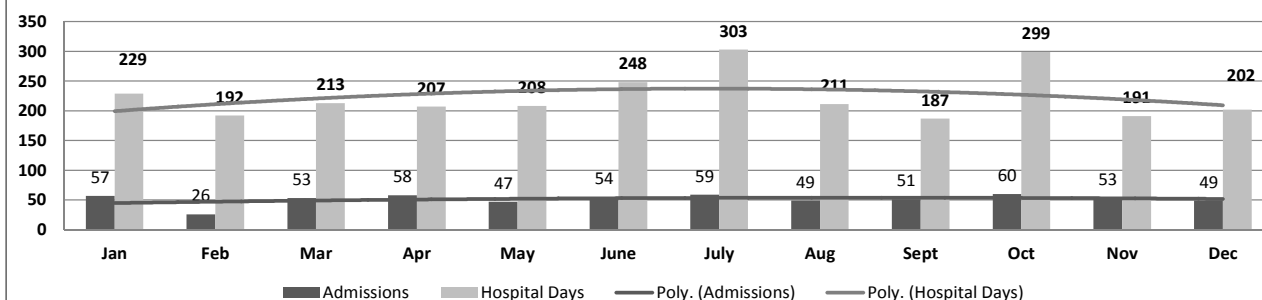
ADC Inpatient Statistics Past 12 Months

	2018												Average
	Jan	Feb	Mar	Apr	May	June	July	Aug	Sept	Oct	Nov	Dec	
Admissions	57	26	53	58	47	54	59	49	51	60	53	49	51.3
Hospital Days	229	192	213	207	208	248	303	211	187	299	191	202	224.2
Average Length of Stay	5.37	4.76	4.91	6.56	5.22	5.48	5.10	6.21	7.07	6.70	7.65	4.12	4.37

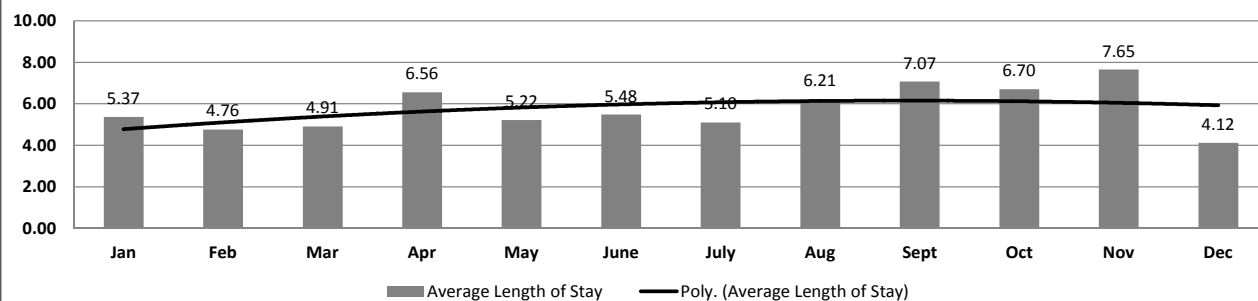
ADC ER Visits Past 12 Months

	2018												Average
	Jan	Feb	Mar	Apr	May	June	July	Aug	Sept	Oct	Nov	Dec	
Emergency Room Visits	105	97	99	94	79	82	117	96	110	95	91	105	97.5

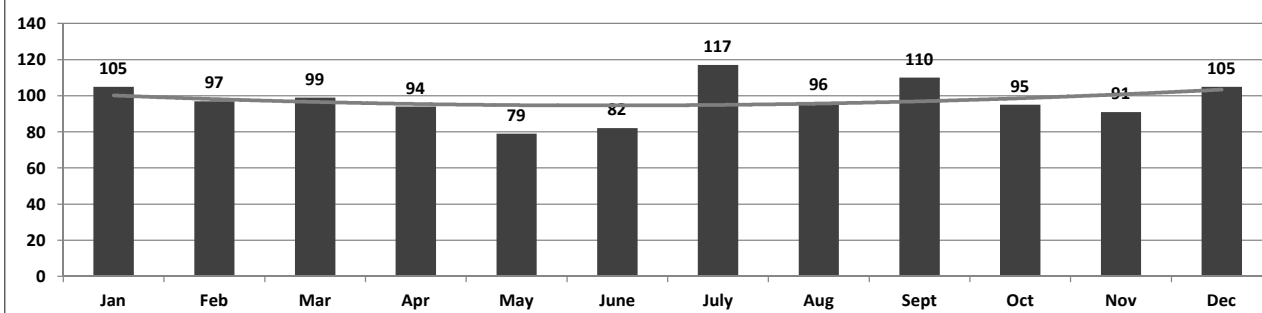
ADC Inpatient Utilization Past 12 Months



ADC Inpatient Average Length of Stay Past 12 Months



ADC Emergency Room Visits Past 12 Months



MEDICAL GRIEVANCE BOARD REPORT – DECEMBER 2018

Unit	Acknowledged/ Received	Rejected	Reviewed & Signed by Dep Director	With Merit	With Merit, but Resolved	% With Merit	Without Merit
Benton	0	0	0	0	0	0%	0
Bowie Co.	0	0	2	0	0	0%	2
CMU	0	0	0	0	0	0%	0
Cummins	6	0	9	0	0	0%	9
Delta	2	0	3	0	0	0%	3
EARU	21	7	15	1	1	13%	13
EARU Max	11	4	19	4	1	26%	14
Ester	2	0	4	0	0	0%	4
Grimes	9	4	5	0	0	0%	5
Hawkins	1	1	3	2	0	67%	1
McPherson	7	0	11	0	1	9%	10
MCWRC	0	0	0	0	0	0%	0
MSU	2	2	16	2	1	19%	13
North Central	6	1	6	1	0	17%	5
NWAWRC	0	0	0	0	0	0%	0
Ouachita	26	8	23	2	0	9%	21
Pine Bluff	1	1	0	0	0	0%	0
Randall Williams	0	0	2	0	0	0%	2
SNN	0	0	0	0	0	0%	0
TRCC	0	0	0	0	0	0%	0
Tucker	2	4	5	1	0	20%	4
Varner	29	5	19	2	0	11%	17
Varner S Max	30	2	21	0	1	5%	20
WRU	6	0	3	0	0	0%	3
WHM	0	0	0	0	0	0%	0
WWR	0	0	0	0	0	0%	0
TOTAL	161	39	166	15	5	12%	146

CHAPLAINCY

Monthly Report for: December 2018	BENTON	CUMMINS	DELTA REGIONAL	EAST ARKANSAS	EAST ARKANSAS MAX	ESTER	GRIMES	HAWKINS	MAXIMUM	MCPHERSON	NORTH CENTRAL	OUACHITA RIVER	PINE BLUFF	RANDALL L. WILLIAMS	TUCKER	VARNER	VARNER MAX	WRIGHTSVILLE	TOTAL
Services Chaplains Oversaw																			
Christian																			
Population	0	7	5	2	0	2	5	4	4	4	25	6	3	10	12	12	0	5	106
Segregation	0	0	0	0	0	0	0	0	0	0	0	2	0	0	0	0	0	0	2
Muslim																			
Population	0	4	3	1	0	1	5	0	0	4	1	4	0	4	0	4	0	4	35
Segregation	0	0	0	0	0	0	0	0	0	0	0	0	0	0	0	0	0	0	0
	143																		
Volunteers in Charge																			
Protestant	0	15	9	20	0	13	14	14	23	26	1	7	13	13	16	7	0	26	217
Catholic	0	2	0	2	0	1	2	3	1	2	2	4	1	1	1	3	0	3	28
Muslim	0	4	2	3	0	0	4	0	0	0	0	4	0	0	1	0	0	0	18
Other	0	0	0	7	0	0	2	0	4	4	0	18	0	0	0	4	0	2	41
Baptism	0	0	0	5	0	0	0	0	0	0	2	2	0	0	2	3	0	6	20
Marriages																			
	0	0	0	0	0	1	2	0	0	0	1	0	0	0	1	0	0	0	5
Distributed by Chaplains																			
Greeting Cards	0	1,455	308	10	17	115	378	250	2,000	656	2,000	1,600	1,500	40	167	3,618	356	0	14,470
Bibles, Quran, Torah, Etc.	0	34	30	35	46	34	21	0	16	46	120	400	8	6	7	41	22	12	878
Study Course	0	0	15	2	4	5	9	0	4	169	0	40	0	4	3	0	1	0	256
Writing Supplies	0	3	0	0	0	10	15	968	29	0	0	160	0	0	0	0	0	0	1,185
Literature	0	1,200	625	761	487	0	0	460	925	10	400	500	1,000	26	0	991	94	177	7,656
Chaplain's Visits																			
Barracks	0	94	81	14	0	30	32	10	60	35	30	192	72	33	159	70	0	34	946
Approximate Hours Spent in Barracks	0	70	18	3	0	100	12	5	15	30	8	48	7	9	39	22	12	21	419
Inmate Office visits	0	51	144	102	0	64	73	49	36	44	22	33	5	118	167	66	0	16	990
Other Office visits	0	11	13	32	0	0	12	12	12	35	18	165	8	12	40	18	0	8	396
Hospital	0	1	1	0	0	0	4	0	1	1	0	15	0	0	0	0	0	0	23
Infirmary/Sick Call	0	5	3	5	0	5	12	4	10	8	4	36	4	3	3	5	0	3	110
Restrictive/Punitive Housing	0	8	8	0	11	0	18	0	17	32	4	46	0	84	2	0	0	3	233
PC - DRU	0	0	5	0	0	0	0	0	0	0	0	0	0	0	0	0	0	0	5
Visitation Days	0	0	1	0	0	0	0	0	1	0	0	3	0	0	0	0	0	2	7
Volunteer Visits																			
RCV	0	0	4	9	0	0	5	1	19	28	0	40	0	13	4	2	0	1	126
OCV	0	10	21	76	0	32	0	23	22	22	22	0	16	0	34	4	0	46	328
Spiritual Advisor	0	2	0	1	0	0	0	1	0	0	0	13	0	1	1	0	0	0	19
CRA	0	24	8	57	8	20	59	41	53	45	56	82	15	18	148	45	8	32	719
Religious Volunteer Hours																			
Volunteer Hours	0	41	102	490	16	180	267	66	154	176	330	316	62	73	382	159	23	156	2,993
DENOMINATIONAL/VOLUNTEER CHAPLAIN HOURS	0	56	5	21	0	160	6	76	97	100	100	66	12	55	161	22	0	42	979
	3,972																		
Other Activities of Chaplain																			
Counseled Employees	0	3	10	7	0	7	0	10	1	20	10	80	0	3	4	18	5	3	181
Orientation Sessions	0	4	1	1	0	0	4	0	0	1	2	4	0	0	0	0	0	0	17
Free World Devotions	0	0	2	2	0	9	13	0	0	2	0	12	0	0	0	12	0	0	52
Spoke in Churches	0	21	0	4	0	8	10	0	0	2	2	8	0	0	4	19	0	1	79
Crisis Intervention Sessions	0	17	4	6	0	5	0	10	2	33	10	90	3	5	13	8	3	7	216
Marriage Counseling	0	0	0	1	0	1	0	0	1	2	1	7	0	0	6	1	0	0	20
Denominational Meeting	0	0	0	0	0	0	0	1	0	0	0	1	0	0	0	0	0	0	2
Chaplain's Meeting	0	0	1	1	0	2	1	1	0	1	1	1	1	1	1	3	0	1	16
Volunteer Training Session	0	0	0	4	0	0	0	1	0	0	1	0	0	0	1	2	0	0	9
Choir Trip	0	0	0	0	0	0	0	0	0	0	0	0	0	0	0	0	0	0	0
Chaplain Transfers																			
	0	0	0	1	0	0	0	0	0	0	0	0	0	0	0	0	0	0	1
Chaplain Promotions																			
	0	0	0	0	0	0	0	0	0	0	0	0	0	0	0	0	0	0	0
PAL PROGRAM																			
Enrolled at start of month	0	47	21	50	0	30	45	30	10	56	17	36	0	34	61	52	0	23	512
Enrolled during the month	0	8	6	6	0	0	6	4	5	16	0	5	0	3	4	5	0	5	73
Removed From PAL Program																			
# Paroled	0	1	0	0	0	0	1	0	0	1	0	0	0	1	1	1	0	0	6
# Completed	0	0	0	6	0	8	0	2	0	2	2	1	0	0	0	4	0	0	25
# Withdrew	0	2	0	0	0	0	0	0	2	6	1	0	0	2	1	0	0	0	14
# Removed	0	4	2	0	0	0	0	0	2	4	1	4	0	0	0	1	0	0	18
# Transferred	0	1	1	1	0	0	0	0	0	1	2	0	0	0	1	0	0	0	7
Total Removed from PAL Program	0	8	3	7	0	8	1	2	4	14	6	5	0	3	3	6	0	0	70
Total Enrolled at the End of the Month	0	47	24	49	0	22	50	32	11	58	11	36	0	34	62	51	0	28	515
Volunteers In PAL																			
	0	12	1	11	0	6	13	45	8	31	4	10	0	4	10	5	0	3	163
Special Events:																			
	1	1	2	7	1	1	1	4	2	3	4	3	1	1	1	1	1	5	40

MONTHLY PURCHASING REPORT – DECEMBER 2018

PURCHASE ORDERS OVER \$10,000.00					
VENDOR	DESCRIPTION	LOCATION	PO#	PURCHASE AMOUNT	FUND
American Paper & Twine Co	Paper Towels	Central Warehouse	4501847570	\$50,700.94	Operational Budget
Printing Papers Inc	Paper	Central Warehouse	4501847571	\$28,108.08	Operational Budget
Ramsey Truck Sales	Bus Engine & Repair	Benton	4501847445	\$13,914.23	Work Release
McGhee Transport Inc	Hauling Soybeans	Tucker/Farm	4501847502	\$10,200.00	Operational Farm Budget
McGhee Transport Inc	Hauling Soybeans	Tucker/Farm	4501847484	\$24,000.00	Operational Farm Budget
Fastenal Co	Cameras & Hard Drives	Construction/Construction	4501847555	\$40,617.28	Telephone Funds
Redwood Toxicology Laboratory Inc	Drug Testing Supplies	Admin Bldg/Drug Testing	4501847728	\$17,325.00	Operational Budget
GE Government Supply	Powdered Milk	Farm/Creamery	4501848051	\$58,000.00	Operational Farm Budget
Harcros Chemicals Inc	Janitorial Chemicals	Delta/Janitorial Factory	4501847923	\$23,411.04	Operational Industry Budget
Ideal Chemical & Supply Company	Janitorial Chemicals	Delta/Janitorial Factory	4501847927	\$15,603.12	Operational Industry Budget
Maroon Intermediate Holdings LLC	Janitorial Chemicals	Delta/Janitorial Factory	4501847928	\$17,208.00	Operational Industry Budget
Mid States Services Inc	Toilet Paper	Wrightsville/Warehouse	4501847935	\$20,966.40	Operational Industry Budget
Arkansas Correctional Industries	Jackets	Tucker	4501848229	\$30,022.19	Operational Budget
Bob Barker Company Inc	Thermal Clothing	Tucker	4501848234	\$20,024.87	Operational Budget
Green & Chapman LLC	Fuel-Unleaded	Cummins/Commissary	4501848216	\$12,740.20	Operational Budget
Plumbmaster Inc	Shower Plumbing Supplies	Construction/Construction	4501848487	\$19,082.51	PB Barracks Reno
Arkansas Correctional Industries	Clothing	EARU	4501849368	\$32,686.79	Operational Budget
Mid States Services Inc	Toilet Paper	Wrightsville/Warehouse	4501849496	\$20,966.40	Operational Industry Budget
The Presidio Corporation	Network Svc Equipment-Port Switches	Admin East/Information Services	4501849402	\$10,230.00	Operational Budget
US Foods Inc	Cleaner & Scouring Pads	Central Warehouse	4501849002	\$20,977.44	Operational Budget
Green Point AG LLC	Fuel-Diesel	Cummins/Farm Garage	4501842227	\$53,003.16	Operational Farm Budget
Terry Simpson	Hauling Soybeans	EARU/Farm	4501844844	\$21,647.15	Operational Farm Budget
Terry Simpson	Hauling Soybeans	EARU/Farm	4501844843	\$13,737.23	Operational Farm Budget
Dreamline Mfg Inc	Mattresses	Tucker/Industry	4501848789	\$59,955.00	Operational Industry Budget
Relias Learning LLC	Annual Subscription Coverage	Training Academy	4501848587	\$58,505.68	Operational Budget
Arkansas Correctional Industries	Clothing	Ouachita	4501849184	\$91,232.35	Operational Budget
Eds Supply Co Inc	HVAC Unit	Cummins/Maintenance	4501849217	\$11,715.35	Operational Budget
WW Grainger Inc	Shelves	Admin East/Information Services	4501849579	\$12,720.32	Operational Budget
Green & Chapman LLC	Fuel-Diesel	Tucker/Farm	4501848766	\$14,717.43	Operational Farm Budget
William R Hill & Co Doug Waldmann	Food Purchases	Central Warehouse	4501849789	\$89,912.00	Operational Budget
Robbins Sales Company	Food Purchases	Central Warehouse	4501849802	\$189,438.48	Operational Budget
Sysco Food Services of Arkansas Inc	Food Purchases	Central Warehouse	4501849827	\$153,053.10	Operational Budget
National Food Group	Food Purchases	Central Warehouse	4501849877	\$116,394.37	Operational Budget
Datamax Inc	Lexmark Printers	Admin East/Information Services	4501850008	\$19,750.00	Operational Budget
US Foods Inc	Food Purchases	Central Warehouse	4501850193	\$21,928.40	Operational Budget
Green & Chapman LLC	Fuel-Unleaded	Wrightsville	4501846582	\$11,834.71	Operational Budget
US Foods Inc	Food Purchases	Central Warehouse	4501850763	\$456,024.32	Operational Budget
MJ Kellner	Food Purchases	Central Warehouse	4501851307	\$150,654.00	Operational Budget
Washington Pump Co Inc	Motor & Parts for Well #2	North Central/Maintenance	4501847203	\$22,516.34	Operational Budget
William R Hill & Co Doug Waldmann	Food Purchases	Central Warehouse	4501851667	\$383,546.42	Operational Budget
Sysco Food Services of Arkansas Inc	Food Purchases	Central Warehouse	4501851745	\$392,850.00	Operational Budget
Niche Chem Industries Inc	Janitorial Chemicals	Delta/Janitorial Factory	4501851519	\$10,575.00	Operational Industry Budget
Mid States Services Inc	Toilet Paper	Wrightsville/Warehouse	4501851029	\$20,966.40	Operational Industry Budget
Printing Papers Inc	Paper	Central Warehouse	4501851776	\$28,108.08	Operational Budget
		Total for Purchases over \$10,000		\$2,891,569.78	
FIRM CONTRACTS OVER \$25,000.00					
VENDOR	DESCRIPTION	UNIT	Contract # P.O.#	PURCHASE AMOUNT	FUND
		Total for Contracts		\$0.00	
EMERGENCY PURCHASE ORDERS OVER \$25,000.00					
		Total EM Purchases		\$0.00	
Total Purchases				\$2,891,569.78	

PERSONNEL REPORT – DECEMBER 2018

UNIT	AUTHORIZED	FILLED	VACANT	% VACANT	HIRED	VOLUNTARY TERMINATION	INVOLUNTARY TERMINATION	RETIREMENT
BENTON (CR05)	77	72	5	6.49%	0	3	0	1
CENTRAL OFFICE (CR01, CR02, CR08 & CR22)	271	245	26	9.59%	2	1	0	1
509 CHAPL ADMIN	26	26	0	0.00%	1	0	0	0
CONSTRUCTION (CR04)	59	57	2	3.39%	0	0	0	0
CUMMINS (CR09)	427	388	39	9.13%	3	8	4	0
DELTA (CR10)	183	176	7	3.83%	0	1	0	0
EAST ARKANSAS (CR12)	365	318	47	12.88%	2	6	3	0
ESTER (CR11)	156	143	13	8.33%	0	2	1	0
FARM (CR29)	61	52	9	14.75%	1	1	0	0
GRIMES (CR27)	244	223	21	8.61%	0	1	0	0
HAWKINS (CR06)	76	76	0	0.00%	0	0	0	0
INDUSTRY (CR07)	52	41	11	21.15%	0	0	0	0
MAXIMUM SECURITY (CR14)	229	178	51	22.27%	3	2	7	0
MCPHERSON (CR28)	230	216	14	6.09%	1	3	0	0
MENTAL HEALTH	182	150	32	17.58%	2	1	0	2
MISS COUNTY (CR15)	38	33	5	13.16%	0	1	0	0
NORTH CENTRAL (CR16)	197	190	7	3.55%	0	2	0	1
NORTHWEST ARK (CR17)	30	28	2	6.67%	0	1	0	0
OUACHITA RIVER (CR30)	466	413	53	11.37%	5	7	6	1
PINE BLUFF (CR20)	169	156	13	7.69%	0	3	3	0
RANDAL L. WILLIAMS (CR13)	145	136	9	6.21%	1	1	0	1
TEXARKANA (CR21)	31	28	3	9.68%	0	0	0	0
TRANSPORTATION (CR32)	102	96	6	5.88%	0	0	0	0
TUCKER (CR23)	199	166	33	16.58%	0	3	4	0
VARNER (CR24)	358	283	75	20.95%	0	3	8	0
WRIGHTSVILLE (CR25)	207	190	17	8.21%	1	8	1	1
TOTAL	4,580 *	4,080 *	500 *	10.92%	22	58	37	8

Term/Hire report run 1/2/19 - PSR created 1/2/19 for 12/31/18

*These numbers reflect both security and non-security employees

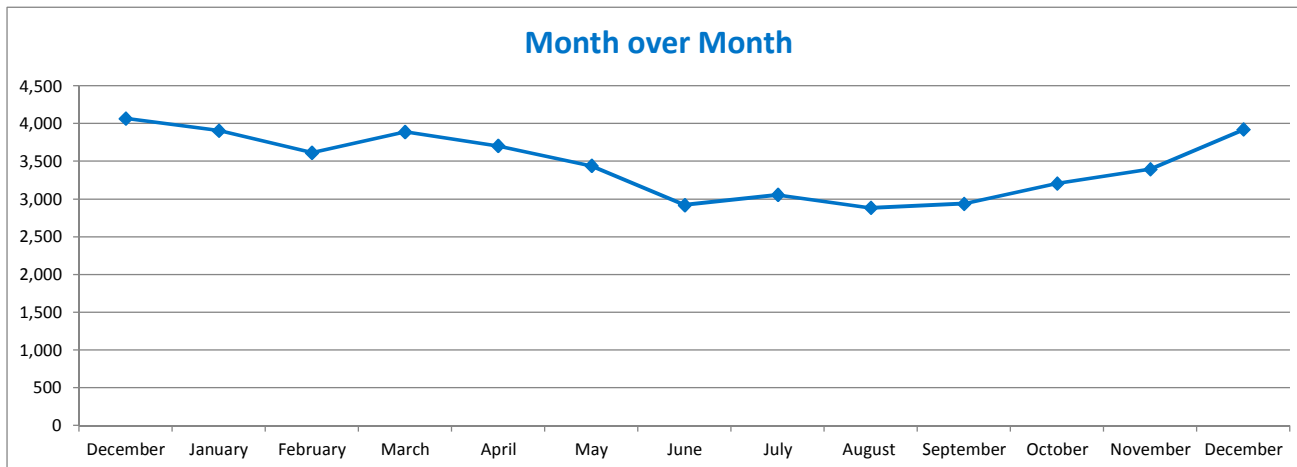
AR-DOC SECURUS VIDEO VISITATION ACTIVITY TRACKER - DECEMBER 2018

AR-DOC SVV Activity Tracker

Total ADP: 15,586

Total Visits by Month	December	January	February	March	April	May	June	July	August	September	October	November	December
Total (includes SuperMax)	4,071	3,909	3,618	3,890	3,705	3,441	2,923	3,057	2,885	2,939	3,207	3,399	3,924
Target Objective	15,586	15,586	15,586	15,586	15,586	15,586	15,586	15,586	15,586	15,586	15,586	15,586	15,587

Anywhere Visitation Performance:



Completed Visits

Site	Current Month	Previous Month
Benton	204	180
Cummins	260	253
Delta Regional	202	170
East Arkansas Regional	294	275
Ester	233	247
Grimes	376	259
J Aaron Hawkins Sr.	202	163
Tucker Max	61	52
Mcperson	304	291
Mississippi County WRC	17	10
North Central	232	187
NW Arkansas WRC	14	9
Ouachita River	450	390
Pine Bluff Complex	133	91
Randall L Williams	225	237
State Police Barracks	32	29
Texarkana Regional	43	47
Tucker Unit	130	74
Varner	215	225
Wrightsville Unit	287	210
Pine Bluff Re-Entry	10	0
Total:	3,924	3,399

Missed by Inmate

Site	Current Month	Previous Month
Benton	16	7
Cummins	32	18
Delta Regional	1	1
East Arkansas Regional	16	17
Ester	5	3
Grimes	5	9
J Aaron Hawkins Sr.	1	5
Tucker Max	2	2
Mcperson	6	21
Mississippi County WRC	4	1
North Central	6	7
NW Arkansas WRC	1	1
Ouachita River	18	13
Pine Bluff Complex	3	2
Randall L Williams	4	6
State Police Barracks	1	2
Texarkana Regional	1	2
Tucker Unit	17	3
Varner	8	7
Wrightsville Unit	2	6
Pine Bluff Re-Entry	1	0
Total:	150	133

AR-DOC LEASED SECURUS TABLETS - DECEMBER 2018

FACILITY NAME	LEASED	TOTAL
Benton Unit	79	90
Cummins Unit	254	356
Delta Regional Unit	84	136
East Arkansas Regional Unit	155	259
Ester Unit	84	236
Grimes Unit	129	211
J Aaron Hawkins Sr Center For	96	180
McPherson Unit	188	302
Mississippi County Work Release	40	51
North Central Unit	112	194
Northwest Arkansas Work Release	45	55
Ouachita River Unit	194	318
Pine Bluff Re-Entry Center	8	10
Pine Bluff Unit	55	68
Randall L. Williams Facility	86	126
State Police Barracks	17	21
Texarkana Regional Correctional	23	35
Tucker Maximum Security Unit	71	114
Tucker Unit	141	212
Varner Unit	194	301
Wrightsville Unit	166	230
	2,221	3,505

*The difference between LEASED and TOTAL tablets reflects the number of program and officer tablets.

CONSTRUCTION BUDGET / STATUS REPORT - JANUARY 10, 2019 — [Page 1 of 2]

Fund	Project Description	Total Projected	Budget	Available Funds	\$ % Complete	Construction % Complete	Notes
7004810	Cummins Poultry Houses	\$ 5,939,457	\$ 6,100,000	\$ 160,543	97%	98%	To correct ramp problem, looking at changing forklifts.
KBR4Q95	ESTER - Phase 3 - General Improvement Fund	2,943,927	4,383,781	1,439,854	67%	98%	Parking Lot in design. Cameras will be installed around perimeter after paving. ADFA bonds turned back on Phases 1 & 2 1A
700483A	EARU ISO Rec Yard	265,735	271,430	5,695	98%	100%	Complete
700483A	Varner ISO Rec Yard	180,277	180,953	676	100%	75%	Rec Pens underway, all parts built
700483A	EARU Max Rec Precast Rec Yard	67,887	659,553	591,666	10%	0%	Plans approved by DBA. Getting revised quotes. Preparing budget.
700483A	Tucker Max Precast Rec Yard	-	1,210,000	1,210,000	0%	0%	Plans being submitted to DBA
700483A	Cummins Precast Rec Yard	-	927,500	927,500	0%	0%	Plans being submitted to DBA
KBR4Q95	Bullpens	180,476	851,999	671,523	21%	60%	Making final terminations, programming sensors. Expect to complete by 1/25/19
KBR4Q95	13 & 15 Barracks Door Revisions	111,509	174,000	62,491	64%	55%	All doors have been installed in 13 Barracks.
KBR4Q95	Camera's (New)	726,881	1,248,000	521,119	58%	50%	Cameras ordered, installation underway. Delta complete, working at Varner.
700485A	Integrity Energy Improvements at EARU & Delta	14,305,885	17,020,204	2,714,319	84%	75%	lights (100%), plumbing 99%, water (90%), compost (90%), & solar (100%), HVAC (90%).
700486A	Pine Bluff Unit Barracks 9 Renovation	286,177	437,000	150,823	65%	55%	9D construction complete, 9A underway, then to 9B & 9C
KBSCW18	McPherson Administration	30,342.81	395,439	365,096	8%	0%	Architects prepared Plans, DBA approved Plans 11/2/18
KBSBW18	McPherson Visitation	22,524.78	312,430	289,905	7%	0%	
KBSHW18	Tucker Water Treatment	-	1,093,848	1,093,848	0%	0%	submitting for designer approval.
KBSFW18	Max Armory	-	70,000	70,000	0%	0%	to replace existing inadequate Armory.
KBSFW18	Varner Armory	-	68,399	68,399	0%	0%	Plans sent to DBA, comments received, replied to DBA.
7004820	Central Office Roof Replacement	398,893.77	500,000	101,106	80%	25%	Started 12/3, demo at night, replace each day. 50% complete
509	Wrightsville ACI Roof Replacement	250,592.33	255,000	4,408	98%	60%	replacing a very old metal roof
	Springdale WRC Laundry and Commissary	-		0	0%		reviewing /revising architect's floorplan

Telephone Projects

Maintenance & Operations	Fire Alarm Upgrades (All Units)	15,903	53,000	37,097	30%	25%	on-going
	Gas Stations - Canopy (C/O)	0	-	0	0%	97%	Steel structure completed.
	Stainless Steel - Kitchen/Shower/Restrooms - All Units	12,601	20,000	7,399	63%	60%	continual need
	Parking Lot - Gravel and Paving - EARU	0	68,000	68,000	0%	0%	Parking lot complete. Working on paving road to State highway, acquiring R.O.W.
	Gates and Fences all units	10,000	30,000	20,000	33%	0%	to improve security
	ACA Maintenance	93,578	100,000	6,422	94%	90%	seven Units coming up this fiscal year, 2019
	ADA Projects - All Units	371	1,000	629	37%	30%	as needed.
	Fast Top Floor Systems (kitchen/laundry/showers all units)	24,939	25,000	61	100%	100%	projects as requested as needed. ORCU 100% complete, Benton & NWAARC next.



CONSTRUCTION BUDGET / STATUS REPORT - JANUARY 10, 2019 — [Page 2 of 2]

Fund	Project Description	Total Projected	Budget	Available Funds	\$ % Complete	Construction % Complete	Notes
Maintenance & Operations	Camera Equipment - All Units	174,400	175,000	600	100%	80%	cameras as requested/approved.
	Lock/Riot Gates - All Units	85,677	90,500	4,823	95%	75%	on-going.
	AC Units-All Units	61,602	100,000	38,398	62%	57%	repairing & replacing daily.
	Subtotal	\$ 479,071	\$ 662,500	\$ 183,429			
FY19 Carry Forward	Metal Ceilings	0	25,000	25,000	0%	0%	Max Barracks 2 complete.
	ORCU Gravel Pit Operations	7,053	35,000	27,947	20%	100%	on-going. Elect upgrades complete, crusher operating.
	Dog Kennel/Horse Stable Malvern	0	48,000	48,000	0%	0%	DBA comments received, responses underway.
	Emergency Generator - All Units	82,987	100,000	17,013	83%	79%	EARU generators installed, waiting on Entergy to connect. Wrightsville Infirmary is next.
	Roof Repairs-Cummins	0	189,700	138,475	27%	0%	Prepared large order for multiple Units. Currently at the Max & Tucker, 75 skylights left to install at Max, on order, scheduled to arrive 1/17.
	Roof Repairs-Cummins Laundry	0				0%	
	Roof Repairs-East Arkansas	0				0%	
	Roof Repairs-Max	49,497				10%	
	Roof Repairs-Tucker	0				0%	
	Roof Repairs-Varner	1,728				0%	
	Roof Repairs-Wrightsville	0				0%	
	Boiler Repair	28,950	100,000	71,050	29%	100%	continually needing repair
	Subtotal	\$ 170,214	\$ 497,700	\$ 327,486			
New Projects	EARU Sewer lift station	72,782	75,000	2,218	97%	100%	Project complete and operating.
	Tucker 4 new filters & one aeration tank	11,567	500,000	488,434	2%	0%	Plans approved by Health Dept. & DBA, preparing bid documents.
	Change media in 7 water filters at Tucker	4,132	6,000	1,869	69%	100%	Filter media changed out in all 7 filters. Water quality improving.
	Tucker Barracks 10 covered walkway	0	-	0	0%	0%	Plans being submitted to DBA
	Max manhole	0	-	0	0%	0%	to provide access to a blockage point in sewer
	RLW Sewer relocation 400' + 2 MH	0	34,000	34,000	0%	0%	frequent stoppages, defect in pipe line.
	Additional Metal Fab shop	0	-	0	0%	0%	room to do more metal work
	PB Warehouse Drive replacement	0	95,000	95,000	0%	0%	asphalt drive pot holed
	Subtotal	\$ 88,480	\$ 710,000	\$ 621,520			
	Architect Fees	114,501	30,000	-84,501	382%		
	Total	\$ 852,266	\$ 1,900,200	\$ 1,047,934			

Notes

Report has not been reconciled against Accountings Reconciled Reports.
Tolerance/Deviation is with in 1% of Projected Spending.