

Wendy Kelley
Director

December
2015



OPERATIONS/INSTITUTIONS

RESEARCH/PLANNING

Average County Jail Backup – The backup in the county jails averaged 1,798 inmates per day during the month of November, – down from an average of **1,881** inmates per day during the month of October.

Inmate Population Growth/Projection –At the end of November the Arkansas Department of Correction population totaled **17,981** representing a growth of 107 inmates since the first of January. In the current calendar year the average growth is 10 inmates per month, down from an average monthly growth during calendar year 2014 of 53 inmates per month. **(Admissions for November totaled 814 while releases totaled 1,041 for a net decrease in-house of 227 inmates.)**

ACCREDITATION

No audits for the month of November. Next reaccreditation audits will be March and April of 2016.

ACA internal audits completed:

Nov. 9-10 Springdale file review
Nov. 19 MCWRC file review

Classes Taught:

Nov. 30 Training Academy

Fire/Safety and Sanitation independent audits conducted by the Fire and Sanitation Coordinator:

Nov. 2 - 6 EARU Independent Audit
Nov. 9 NCU Independent Audit
Nov. 10 Benton Independent Audit
Nov. 12 TRCC Independent Audit
Nov. 18-19 Tucker Unit Independent Audit
Nov. 20 NAWARC
Nov. 23 MCWRC Independent Audit

Classes Taught:

Nov. 16-17 Fire Safety Certification Class

PREA

PREA Hotline Data:

There were no reported issues with the PREA Hotline. Internal Affairs is handling all PREA investigations. New PREA posters were approved and distributed to the units to replace existing

posters. The new PREA Informational Guide for inmates was approved and sent to the units for distribution to the inmate population and staff.

Number of calls received	51
Total calls referred for reported PREA issue	16
Total calls referred for non-PREA issue	10
Calls referred due to technical failure	0
Calls referred to IAD	3

FARM

November was a relatively quiet month for the ag division. Each farm finished all of their row crop harvests. Yields were off about what we thought they would be as compared to last year. The rice crop was above average at Tucker and Cummins. The gardens struggled again due to the heavy amounts of rain. During a two-week period, we received almost 10 inches of rain at Cummins.

The poultry house is still running at 80% and above efficiency. The age of the hens is now such that 60% of the eggs we are producing are large and above. We are trying to capture a premium price for the extra large eggs.

Wrightsville has been sorting the calf crop in preparation for selling the calves. We will be using Superior Livestock to auction our cattle. We are moving the sale of the cattle from early December to early January. The cattle market has been under some pressure and we hope for a rebound after the end of the year. This also gives us time to properly group the cattle according to weight based on their average daily gain.

We are getting very close to completing our master garden plan that will enable us to grow what the kitchens need and want. I am very optimistic about our garden program moving forward to supply all of the inmate vegetable needs.

INMATE GRIEVANCE

Inmate Formal / Informal Grievances: In November, there were a total of 2,135 formal grievances filed and 3,896 informal grievances filed at various units.

Institutional Grievances: There were a total of 608 appeals of institutional grievances received and 414 appeals were answered in November. Eight were found with merit.

RE-ENTRY

CHAPLAINCY SERVICES

Pine Bluff Complex

November 5-8 we held a Kairos Weekend at the Pine Bluff Unit. There were three volunteer chaplains with a total of 105 hours and nine OCVs with a total of 315 hours. Twenty-four inmates participated in the weekend and another 24 inmates worked during the weekend.

Hawkins Unit

November 22-December 2, APAP Worship with Music Service was held to celebrate Thanksgiving. We had 124 inmates and 11 free world visitors along with three chaplains attending.

EARU/EARU Max

November saw an increase in inmate counseling due to the interview process for the Reentry Program.

McPherson Unit

We had 30 inmates participate in Kairos weekend November 12-15. The weekend consisted of free world testimonies, group building, a forgiveness ceremony, praise and worship. There were four CRAs present and 26 RCVs. The group also distributed cookies to 1,024 inmates and staff.

On November 17, we had 86 inmates participate in the Story Book project, which brought in seven OCVs to help inmates select a book and read a book on tape. The book was then sent to their families.

North Central Unit

We distributed Thanksgiving Day Cards on November 6 unit wide.

Benton Unit

We held four Stepping Up classes in November. There were 60 inmates participating. On November 21, the House of Refuge Ministries from Jacksonville ministered to 13 inmates by four OCVs. On November 28, we had Christian Activity Night. There were 22 inmates participating in Baseball Bible Trivia and we had one salvation that night.

ORCU

The Chapel Building Groundbreaking Service was conducted on November 12 with 22 inmates present.

Two Bible Study classes on the "History of World Religion" were held in the PAL Program by PAL volunteers. Eighty inmates were in attendance for the month.

Denominational Services:

Jehovah's Witnesses – 39 inmates in four studies. An average of 9.75 per study.

Seventh Day Adventist – 74 inmates in four services.

An average of 18.5 per service.

House of Yahweh – 10 inmates in three services. An average of 3.25 per service.

Church of Christ – 383 inmates in five services. An average of 76.6 per service

Pre-Release: October 2015

	Slots	Completed	Dis-charged	End Count
McPherson	15	0	1	10
Ester-2BKS	50	7	3	51
Ester-3BKS	50	3	9	52
Total	115	10	13	113

There are 605 males and 69 females on the waiting list within 42 months of their release date and of those, ten males and zero females are mandated by the Board of Parole. The average time on the waiting list is about three months. The total on the waiting list, including those not currently within the identified time frame, is 674 males and 97 females

Volunteer Services:

The total number of volunteer hours for the month of November:

Unit	Hours
RLW	37
Ouachita River	26
Pine Bluff	8
PAWS	2
WSU	312
Pine Bluff Unit – Pre-Release	5.5
Religious Volunteer-all Units	4296
TOTAL	4686.5

ADMINISTRATIVE SERVICES

Budget Section Update:

There were no act 715 cases for November.

Procurement Section Update:

Contracts/Bids Status:

Contract Renewals

Liquid bleach

Contracts Award

Boiler-Ester Unit

Minority Spending 1ST Quarter FY16

July-September \$155,945.66 (1.12%)

Total to date FY16- \$155,945.66 (1.12%)

HUMAN RESOURCES

Workplace Safety – During the month of November, the modified version of the Health and Safety Plan was presented to two Basic Training classes with a total of 102 cadets in attendance.

There were 41 incidents reported to the Company Nurse in November, which brings our Workman's Compensation incidents reported to 571 in 2015.

Benefits - There were 35 MIPS promotions and 123 MIPS payments. Seventy-three FMLA requests were processed with four denied. A total of six CAT leave requests were processed with five approved and one denied. Three hundred ninety-seven hours were donated to the CAT leave bank. There were eight applications received for shared leave and five were approved for a total of 747 hours of donated time; and three denied.

Physical Assessments – There was a total of 184 applicants and incumbent personnel that were assessed in the month of November. Sixty-eight incumbent personnel successfully completed their physical assessments and three incumbent personnel did not. One hundred eleven applicants passed their physical assessments and two did not.

Employment – Facebook results for the month showed a total of 10,641 “likes” of our page. Through Discover Corrections, there were 412 from across the U.S. who viewed ADC's page. This site does not allow you review comments to be made unless the viewer applies for a position through their site and is hired. During the month of November there were no applications submitted for ADC through the Discover Corrections website. The Human Resources Recruiter coordinated Job Fairs at the McGhee High School, and the Greenville Win Job Center. The recruiter visited with a total of 55 potential applicants during these job fairs.

The reporting features that INS (Information Network Systems) has developed for the ARStateJobs website (all agencies) have been implemented. We have requested agency specific features, but have not received notification that those changes have been made. Because of duplicating infor-

mation, we are now only tracking CO I applications through the ARStateJobs website. This site does not have the capabilities to give us a breakdown. INS still has not developed any agency specific request for reporting purposes.

The report through AR State Jobs provides the following information:

Advertised positions

Positions hired

Applications received

How many met minimum qualifications

How many did not meet qualifications and a reason they did not meet - (1-experience; 2-license or certifications; 3-other)

How many need further review

How many were not processed

Gender

Race

Veteran status

There were a total of 2,178 applications received during November through ARStateJobs website. Sixty Non-correctional applications and 77 CO I applications were processed. Eighty-eight correctional officers were hired and 14 correctional officers were re-hired.

Administrative Services Division Monthly Reports (attached) include:

Gifts, Grants, and Donations/Inmate Welfare Fund Balance (required by policy) – During the month of November, are reported as follows:

Donated to ADC:

Gifts, Grants and Donations:

Donations for the month of November 2015 were \$103.75.

Inmate Welfare Fund balance on November 1-30, 2015 was \$4,298,715.62.

PAWS in Prison Fund balances total on November 30 were \$92,562.48 in ADC. Account (7004822/Donations) \$16,503.55 and ADC account (NDC0500/Recycling) \$75,958.93. This does not include the Foundation account managed by PIP Foundation Board.

Procurement/Contracts Report (required by policy) –

For November, Purchase Orders and Contracts in excess of \$10,000 amounted to \$3,705,459.10. Of this amount, \$1,613,645.36 was for Inmate Care and Custody related items (food, shoes, clothing, etc.). Bulk fuel costs for the month of November were \$16,768.14 - average cost of bulk diesel was \$1.75/gallon; average cost of E-10 was \$1.88/gallon.

Vacancies, Hires, and Terminations - On November 30 there were a total of 555 vacancies, 97 new hires, and 76 terminations at the various ADC locations.

INFORMATION TECHNOLOGY

The network team completed the fiber connection to the EARU horse barn. A site survey was conducted for the EARU Isolation to maintenance fiber cabling and to develop the best path to add their Armory to the fiber connection. A survey was conducted for Tucker from the security office to Vo-Tech. Ouachita Unit's new Maintenance and Vo-Tech was added to their fiber network as well.

eOMIS project development continues with deadlines to meet. Act 895, Criminal Justice Reform Act of 2015, which states that identification cards or driver licenses provided to inmates 120 days prior to release, has a January 1 deadline. At this time, two files have been provided to the Office of Driver Services with no matching data identifying qualified offenders. Qualifying criteria includes three of four data elements must match to a record in the driver services system. Data Elements include:

Last Name,
Social Security Number,
Date of Birth,
Identification or Driver License Number

For issuance of a driver license, the offender must also pass a vision test or secure corrective lenses. Instructional material and equipment is being provided to the Unit Records department for the ID/DL project.

Development meetings on the eOMIS development project with AOC Contexte Court system has identified that Contexte does not currently capture all data listed on the new sentencing form and may need to be enhanced.

Development for the inmate transparency project is in the testing phase with INA. Marquis has provided the eOMIS interface files. INA is testing the files for publication to the ADC website for the inmate search module.

TRAINING ACADEMY

Training Academy Update – Updates for the Training Academy include:

Basic Training Division

BCOT 2015-N class graduated on November 13 with 67 cadets. The Willis H. Sargent Award winner was Raul Hart of the Ouachita River Unit. Mike Carraway, Assistant Director, served as the special speaker.

Major Randy Callas, Captain Martha Lacy, and Captain Lance Hall completed the 40 hour PPCT certification course November 16 - 20.

In-Service Division

FISH! Philosophy, conducted on November 13 included not only ADC staff but eight from the Parole Board. FISH! Philosophy is an invitation to re-awaken the self-trusting creative spirit within us all; to start new conversations about possibilities, to develop new attitudes, and to have more fun at work and at home.

Our focal point for this month is the PPCT/SKD Instructor certification class. This course certifies staff to teach Pressure Point Control Tactics and Spontaneous Knife Defense. Fourteen cur-

rent instructors gained recertification and 10 new instructors gained certification. Certification is valid for 3 years.

eCADEMY

During the month of November 2015, 225 ADC employees completed a total of 2635.00 hours of eCADEMY training.

HEALTH/CORRECTIONAL PROGRAMS

Sex Offender Treatment Programs:

	Slots	Completed	Removed	Clients
Rsvp	238	0	4	238
Soft	30	0	0	11
Total	268	0	15	249

There are 759 males on the waiting list for RSVP and 31 females on the waiting list for SOFT within five years of their release date and of those, 41 are mandated by the Board of Parole. The average time on the waiting list from request is three to six months for stipulated. The total on the waiting list, including those not currently within the identified time frame, is 1,560 males and 38 females. There are no **PREA** inmates in either program at this time.

Therapeutic Community:

	Slots	Completed	Removed	Clients
Tucker	129*	15	5	133
Wrts	45*	2	0	46
McP	50*	4	6	49
Total	224	21	11	219

There are 127 males and 16 females on the waiting list within 18 months of their release date and of those, 18 are mandated by the Board of Parole. The average time on the waiting list from request is 32 days. The total on the waiting list, including those not currently within the identified time frame, is 516 males and 47 females.

*Denotes transitional beds available at this treatment program. Tucker TC has 129 client slots and seven peer counselor slots.

S.A.T.P.:

	Slots	Completed	Removed	Clients
Grimes	50*	4	4	50
McPherson	100*	12	12	108
MSU	3	0	0	2
RLW/CF	188*	42	7	181
Tucker	43*	3	1	42
Varner	44	7	2	46
Wrts	135*	32	5	138
Total	563	100	32	567

There are 1,970 males and 423 females on the waiting list within 18 months of their release date and of those, 39 are mandated by the Board of Parole. The average time on the waiting list from request is 14 days. The total on the waiting list, including those not currently within the identified time frame is 2,911 males and 563 females.

*Denotes transitional beds available at this treatment program.

R.P.U.:

The Residential Program Unit at Ouachita had four admissions and four discharges in November for an end of the month count of 74.

McPherson Mental Health Residential Program:

There were three admissions and three discharges in November for an end-of-month count of 40.

Habilitation Program:

The Habilitation Program at the Ouachita River Correctional Unit provided treatment services to 39 inmates during November. There were no admissions and no discharges for an end-of-month count of 39.

Staffing:

The following Mental Health Services and SATP positions were vacant in October and November:

	October	November
Psychologists	8	8
Social Workers	6	6
Advisors	9	9
Substance Abuse Prog Leaders	5	5
Admin. Specialist/Analyst	4	2
Rehab Adm/Facility Supv	1	0

ADDITIONAL PROGRAM INFORMATION**Substance Abuse Education:**

Substance Abuse Education Groups were held at seven units and six inmates completed the program during November. The current waiting list is 604.

Anger Management:

Anger Management Groups were held at 11 units and 442 inmates completed the program during November. The current waiting list is 1,056.

Thinking Errors:

Thinking Errors Groups were held at 13 units and 282 inmates completed the program during November. The current waiting list is 2,533.

Suicide:

There were 53 suicidal threats, gestures or low/moderate risk attempts during November. There was one serious attempt, which resulted in death.

Outpatient:

There were 2,084 inmates on the mental health medical log at the end of November. Mental Health conducted the following contacts during November:

Case Management Contacts	2,090
Request for Interviews	2,972
Testing	5
Intakes	648
Unit Requests	1,131
Counseling (with treatment plan)	179
Pre-Lock Up Reviews	436
Routine Seg Reviews	592
Seg Rounds	8,658
PREA Evaluations	9
Routine Follow-Up	222
834 Requests	36

Monetary Sanctions:

Sanction reimbursements for October were \$41,100.

County Mental Health Requests:

During November, there were 51 requests of a mental health nature received and 39 inmates were fast tracked to ADC.

County Medical Health Requests:

During November, there were 524 requests of a medical nature received and 15 were fast tracked.

Deaths:

There were four inmate deaths during November; three bodies were claimed, one was cremated.

CCS:

See attachment for CCS's report regarding outside beds and emergency room visits.

Medical Grievances:

In November, there were a total of 337 appeals of medical grievances received and 316 appeals were answered. Forty-six of those were found to be with merit and six were with merit but resolved.

SEX OFFENDER ASSESSMENT**Assessments Completed:**

Risk Level	November	Sept. 1999 thru Nov. 30, 2015
Level 1	1	1,147
Level 2	30	5,944
Level 3	13	5,892
Level 4	0	553
Default 3	0	**
Total	44	13,536

*Default Level 3's are included in the total number of Level 3's to date.

ACIC Numbers:

The total number of sex offenders registered from Sept. 1, 1999 to November 30, 2015:

In Compliance	7,234
Delinquent (Did not return address on time)	860
Confined	2,757
Out of State	2,852
Address Unknown (absconded)	189
Deceased	948
Deported	159
Incapacitated	61
Out of USA	3
Total	15,060

PAWS IN PRISON

We currently have 39 enrolled in training

MAX	5
TUCKER	8
HAWKINS	4
RLW	4
ORCU	10
NCU	8

Graduates for the month of November 2015	13
Graduates year to date (2015)	177
Graduates since inception (Dec 2011)	650
Dogs currently in foster (graduated but not adopted)	6

CONSTRUCTION**PROJECT UPDATES:****Barbara Ester Unit (Diagnostic):**

Construction is renovating barracks and re-roofing the unit, purchasing material, and working with the vendor on receiving kitchen equipment. The contractor is working on HVAC renovation, installing new metal ceilings, and working on plumbing and electrical. We have submitted a requisition to DFA for new boiler. We are working with the architect on Phase 3 and the school addition. Soil samples have been taken from the school. We have received approved plans from DBA for Phase III and new classrooms.

Cummins Unit:

We are working on roof repairs and repairs to free line residences.

Cummins Poultry:

There has been a requisition submitted for a new generator, and the contract has been awarded.

East Arkansas Regional Unit:

Work is continuing on a new firing range, and work is beginning on putting metal roofs and under pinning on State trailers.

Ouachita River Correctional Unit:

Gravel operations are continuing. Work is progressing on the covered walkway from the building to the new Vo-Tech.

Newport/Grimes:

Construction on the new sally port building continues.

Tucker Maximum Security Unit:

Work is in progress on stainless steel for the kitchen walls and putting metal ceiling on fir down in front of cells in barracks.

Tucker:

Work is beginning on a privacy wall for inmate serving line in the dining hall.

Varner:

Roof repairs are being made to the unit.

CONSTRUCTION PERSONNEL UPDATE:

12 vacancies:

1 – Engineer (being advertised)

1 – CO

8 – Maintenance Techs

1 – Construction Project Supervisor

1 – Director of Maintenance

Regional Maintenance Hours

Regional Maintenance				
		Oct'15	Nov'15	Dec'15
Benton Unit		4,905	4,949	
Delta Regional Unit		4,494	5,624	
EARU		2,623	2,304	
Grimes		2,624	3,008	
McPherson		2,200	2,996	
Randall L. Williams Corr. Facility		3,464	2,888	
MSCOWRC		1,705	1,152	
North Central Unit		11,326	6,456	
Ouachita River		5,816	5,336	
TRCC		2,645	1,780	
Tucker Unit		3,972	2,634	
Varner Unit		4,520	3,548	
Wrightsville Satellite Unit		3,144	2,280	
Wrightsville Unit		3,285	1,472	
Total Hours		56,723	46,427	0

Work Release Rent Report

Rent Report				
		Oct. '15	Nov '15	Dec '15
Benton Unit		\$95,693.00	\$88,043.00	
Pine Bluff Reentry W/R		\$27,149.00	\$26,163.00	
NWARWRC		\$38,216.00	\$47,600.00	
MSCOWRC		\$53,703.00	\$52,224.00	
Pine Bluff Unit		\$35,496.00	\$45,050.00	
TRCC		\$32,011.00	\$30,449.00	
Total Rent Paid		\$282,268.00	\$289,529.00	\$0.00

[illegible][illegible]

INMATE INSTITUTIONAL GRIEVANCE APPEAL REPORT

Inmate Institutional Grievance Appeal Report November 2015				
	Received	Rejected	Processed W/O Merit	Processed W/ Merit
Benton Unit	1	0	0	0
Benton Work Release	0	0	0	0
Bowie County Texas Correctional Facility	15	2	16	0
Cummins Unit	19	6	7	0
Cummins Modular Unit	1	3	5	0
Delta Regional Unit	11	4	3	0
Ester Unit	0	0	0	0
East Arkansas Regional Unit	27	4	28	1
East Arkansas Regional Maximum Unit	53	11	69	2
Grimes Unit	26	13	22	0
Maximum Security Unit	96	15	84	3
McPherson Unit	31	7	37	0
McPherson Mental Health Residential Program Unit	0	2	1	0
Mississippi County Work Release Center	0	0	0	0
Northwest Arkansas Work Release Center	0	0	0	0
North Central Unit	6	3	11	0
Ouachita River Correctional Unit	18	5	9	0
ORCU New Commitment	0	0	0	0
ORCU Mental Health Residential Program Unit	1	0	0	0
Pine Bluff Unit	0	0	0	0
Randall L. Williams Correctional Facility	5	2	6	0
Texarkana Regional Correctional Center	0	0	0	0
Tucker Unit	13	9	13	1
Varner Super Max	120	22	61	1
Varner Unit	30	10	27	0
Wrightsville Unit	12	3	2	0
Wrightsville Satellite Unit	0	0	0	0
Hawkins Center	1	1	0	0
Hawkins for Males	0	0	5	0
Hawkins SPU	0	0	0	0
Total	486	122	406	8

ADMISSIONS AND RELEASES

<u>Admissions</u>	<u>Male</u>	<u>Female</u>	<u>Total</u>
Asian	0	0	0
Black	260	17	277
Hispanic	17	1	18
Nat. Amer.	2	1	3
Hawaiian/Pacific Isl	0	0	0
White	403	113	516
Other	0	0	0
Total	682	132	814
<u>Releases</u>	<u>Male</u>	<u>Female</u>	<u>Total</u>
Asian	4	1	5
Black	306	23	329
Hispanic	24	0	24
Nat. Amer.	4	0	4
Hawaiian/Pacific Isl	2	0	2
White	554	123	677
Other	0	0	0
Total	894	147	1041

ARKANSAS DEPARTMENT OF CORRECTION

INMATE POPULATION GROWTH 2000-2022

Updated 11/30/2015

Mo.	2000	2001	2002	2003	2004	2005	2006	2007	2008	2009	2010	2011	2012	2013	2014	2015
Jan.	11,984	11,908	12,402	13,015	13,105	13,595	13,481	13,839	14,518	14,796	15,334	16,312	15,134	14,815	17,481	18,142
Feb.	12,169	12,022	12,529	13,054	13,166	13,783	13,633	14,012	14,603	14,883	15,374	16,209	14,990	15,008	17,438	18,082
March	12,006	12,033	12,299	13,108	13,088	13,418	13,534	13,772	14,580	14,843	15,290	16,095	14,964	14,665	17,395	18,233
April	12,069	12,167	12,465	13,213	13,323	13,469	13,554	13,851	14,769	14,937	15,570	16,172	15,124	14,850	17,604	18,703
May	12,109	12,384	12,558	13,463	13,556	13,528	13,711	14,146	14,880	15,146	15,694	16,062	15,132	15,074	17,593	18,693
June	12,005	12,108	12,439	13,418	13,389	13,251	13,430	13,915	14,700	15,025	15,564	15,554	14,832	14,825	17,340	18,813
July	12,030	12,190	12,622	13,509	13,528	13,286	13,560	14,082	14,868	15,195	15,807	15,519	14,879	15,379	17,522	18,870
August	12,087	12,371	12,815	13,565	13,632	13,419	13,646	14,224	15,100	15,385	15,829	15,240	14,675	16,103	17,549	18,806
September	11,983	12,289	12,774	13,341	13,516	13,237	13,652	14,217	14,850	15,285	16,025	15,172	14,724	16,412	17,605	18,549
October	12,119	12,348	12,942	13,341	13,584	13,363	13,775	14,349	14,836	15,381	16,311	15,271	14,856	16,993	17,880	18,430
November	12,094	12,408	13,162	13,408	13,706	13,587	13,913	14,437	15,025	15,340	16,460	15,205	14,625	17,168	17,848	17,981
December	11,856	12,333	12,845	13,106	13,470	13,338	13,728	14,315	14,716	15,199	16,204	15,062	14,654	17,235	17,874	
Net Ann. Inc.	29	477	512	261	364	-132	390	587	401	483	1,005	-1,142	-408	2,581	639	107
Avg. Mo. Inc.	2	40	43	22	30	-11	33	49	33	40	84	-95	-34	215	53	10

Population is total jurisdictional count at end of each month. Population at end of month December 1999 was 11,827.

Average monthly population increase for past fifteen years 2000 - 2014 is 34

Average monthly population increase for past ten years Jan 2005 - Dec 2014 is 37

Average monthly population increase for past five years 2010 - 2014 is 45

Projected at Growth of 34 per Month

	2008	2009	2010	2011	2012	2013	2014	2015	2016	2017	2018	2019	2020	2021	2022	2023
Mo.	Actual	Actual	Actual	Actual	Actual	Actual	Actual	Actual/ Proj.	Proj.	Proj.	Proj.	Proj.	Proj.	Proj.	Proj.	Proj.
January	14,518	14,796	15,334	16,312	15,134	14,815	17,481	18,142	18,049	18,457	18,865	19,273	19,681	20,089	20,497	20,905
February	14,603	14,883	15,374	16,209	14,990	15,008	17,438	18,082	18,083	18,491	18,899	19,307	19,715	20,123	20,531	20,939
March	14,580	14,843	15,290	16,095	14,964	14,665	17,395	18,233	18,117	18,525	18,933	19,341	19,749	20,157	20,565	20,973
April	14,769	14,937	15,570	16,172	15,124	14,850	17,604	18,703	18,151	18,559	18,967	19,375	19,783	20,191	20,599	21,007
May	14,880	15,146	15,694	16,062	15,132	15,074	17,593	18,693	18,185	18,593	19,001	19,409	19,817	20,225	20,633	21,041
June	14,700	15,025	15,564	15,554	14,832	14,825	17,340	18,813	18,219	18,627	19,035	19,443	19,851	20,259	20,667	21,075
July	14,868	15,195	15,807	15,519	14,879	15,379	17,522	18,870	18,253	18,661	19,069	19,477	19,885	20,293	20,701	21,109
August	15,100	15,385	15,829	15,240	14,675	16,103	17,549	18,806	18,287	18,695	19,103	19,511	19,919	20,327	20,735	21,143
September	14,850	15,285	16,025	15,172	14,724	16,412	17,605	18,549	18,321	18,729	19,137	19,545	19,953	20,361	20,769	21,177
October	14,836	15,381	16,311	15,271	14,856	16,993	17,880	18,430	18,355	18,763	19,171	19,579	19,987	20,395	20,803	21,211
November	15,025	15,340	16,460	15,205	14,625	17,168	17,848	17,981	18,389	18,797	19,205	19,613	20,021	20,429	20,837	21,245
December	14,716	15,199	16,204	15,062	14,654	17,235	17,874	18,015	18,423	18,831	19,239	19,647	20,055	20,463	20,871	21,279
Net Ann. Inc.	401	483	1,005	-1,142	-408	2,581	639	141	408	408	408	408	408	408	408	408
Ave. Mo. Inc.	33	40	84	-95	-34	215	53	12	34	34	34	34	34	34	34	34

ADC County Jail Backup FY2016

DAY		Jul-15		Aug-15		Sep-15		Oct-15		Nov-15
1		2,674	*	2,556		2,276		1,973	*	1,801
2		2,615	*	2,556		2,274		1,979		1,829
3		2,618		2,558		2,267	*	1,979		1,851
4	*	2,618		2,572		2,236	*	1,979		1,862
5	*	2,618		2,592	*	2,236		1,938		1,869
6		2,618		2,598	*	2,236		1,899		1,887
7		2,638		2,615		2,180		1,900	*	1,887
8		2,669	*	2,615		2,180		1,895	*	1,887
9		2,686	*	2,615		2,174		1,895		1,848
10		2,677		2,621		2,181	*	1,895		1,839
11	*	2,677		2,625		2,147	*	1,895		1,854
12	*	2,677		2,597	*	2,147		1,895		1,854
13		2,660		2,606	*	2,147		1,879		1,826
14		2,635		2,607		2,116		1,897	*	1,826
15		2,614	*	2,607		2,100		1,914	*	1,826
16		2,587	*	2,607		2,074		1,886		1,819
17		2,576		2,614		2,067	*	1,886		1,826
18	*	2,576		2,651		2,034	*	1,886		1,826
19	*	2,576		2,666	*	2,034		1,862		1,817
20		2,541		2,705	*	2,034		1,872		1,805
21		2,550		2,687		2,031		1,856	*	1,805
22		2,546	*	2,687		2,023		1,853	*	1,805
23		2,542	*	2,687		2,019		1,843		1,820
24		2,550		2,685		2,034	*	1,843		1,780
25	*	2,550		2,605		2,023	*	1,843		1,728
26	*	2,550		2,553	*	2,023		1,821		1,634
27		2,533		2,453	*	2,023		1,814		1,634
28		2,535		2,309		2,027		1,815	*	1,634
29		2,525	*	2,309		1,975		1,815	*	1,634
30		2,549	*	2,309		1,958		1,801		1,634
31		2,556		2,272			*	1,801		
Average		2,598		2,572		2,109		1,881		1,798
										2191.706

Notes: Totals do not include 309 Contracts in County Jails (maximum of 336)

Monthly Population Averages

	11/2	11/3	11/4	11/5	11/6	11/9	11/10	11/11	11/12	11/13	11/16	11/17	11/18	11/19	11/20	11/23	11/24	11/25	11/26	11/27	11/30	
Unit/Center																					AVG	
Benton	321	321	319	318	318	323	326	321	321	322	324	325	326	321	320	324	327	333	297	297	297	319
Cummins	1,934	1,934	1,932	1,924	1,935	1,935	1,929	1,938	1,938	1,929	1,924	1,925	1,933	1,930	1,938	1,933	1,906	1,905	1,907	1,907	1,907	1,926
Delta	614	613	609	611	605	612	621	614	614	614	613	620	612	619	615	620	606	593	609	609	609	612
E AR Reg	1,670	1,669	1,674	1,673	1,666	1,667	1,670	1,671	1,671	1,671	1,668	1,671	1,664	1,663	1,663	1,661	1,656	1,642	1,642	1,642	1,642	1,663
Ester	184	184	184	184	184	184	183	184	184	183	182	184	184	184	182	184	184	183	184	184	184	184
Grimes	1,071	1,071	1,074	1,074	1,072	1,068	1,069	1,067	1,067	1,070	1,076	1,077	1,077	1,070	1,065	1,055	1,043	1,047	1,043	1,043	1,043	1,064
Max Sec	557	557	557	557	555	555	558	557	557	557	557	557	557	558	557	556	556	558	558	558	558	557
McPherson	1,066	1,066	1,066	1,066	1,066	1,066	1,066	1,066	1,066	1,066	1,066	1,066	1,066	1,066	1,066	1,067	1,057	1,063	1,063	1,063	1,063	1,065
MCWRC	141	141	139	139	143	142	141	140	140	140	140	140	144	143	143	144	134	139	139	139	139	140
N Central	836	836	842	836	838	836	837	836	836	837	837	836	839	838	837	831	826	833	831	831	831	835
NWAWRC	99	99	99	100	100	100	100	100	100	100	99	99	99	99	100	99	94	95	96	96	96	99
Ouachita River	1,851	1,850	1,859	1,852	1,851	1,853	1,849	1,851	1,851	1,848	1,850	1,853	1,840	1,871	1,863	1,861	1,836	1,811	1,811	1,811	1,811	1,844
andall L William	570	573	572	569	569	570	568	564	564	571	569	569	569	570	567	567	570	562	556	556	556	567
Pine Bluff	447	446	442	440	439	446	446	438	438	445	440	436	436	433	440	440	426	435	426	426	426	438
PB Reentry	54	54	54	54	54	54	54	54	54	54	54	54	54	54	54	53	54	54	53	53	53	54
TRCC	121	121	121	127	127	127	127	127	127	127	127	127	128	128	128	128	116	116	116	116	116	124
Tucker	1,123	1,122	1,121	1,122	1,117	1,117	1,111	1,108	1,108	1,115	1,119	1,122	1,123	1,118	1,119	1,115	1,105	1,102	1,095	1,095	1,095	1,113
Vamer	1,730	1,726	1,723	1,737	1,738	1,733	1,730	1,734	1,734	1,738	1,736	1,732	1,732	1,733	1,735	1,733	1,732	1,728	1,729	1,729	1,729	1,732
Wrightsville	1,495	1,489	1,498	1,492	1,495	1,495	1,493	1,494	1,494	1,485	1,494	1,491	1,494	1,488	1,493	1,494	1,486	1,481	1,477	1,477	1,477	1,490
Total ADC	15,884	15,872	15,885	15,875	15,872	15,883	15,878	15,864	15,864	15,872	15,875	15,884	15,877	15,886	15,885	15,865	15,714	15,680	15,632	15,632	15,632	15,824
ALETA	18	18	18	18	18	18	18	17	17	17	17	17	17	17	17	17	17	17	17	17	17	17
Ar State Police	59	60	60	60	59	59	58	58	58	58	58	58	59	59	59	59	57	57	57	57	57	58
Co Jail / M	1,760	1,774	1,782	1,790	1,803	1,756	1,744	1,759	1,759	1,741	1,739	1,758	1,755	1,742	1,739	1,756	1,735	1,701	1,609	1,609	1,609	1,734
Co Jail / F	69	77	80	79	84	92	95	95	95	85	80	68	71	75	66	64	45	27	25	25	25	68
Total Co Jail BK	1,829	1,851	1,862	1,869	1,887	1,848	1,839	1,854	1,854	1,826	1,819	1,826	1,826	1,817	1,805	1,820	1,780	1,728	1,634	1,634	1,634	1,802
Bowie Co., TX	335	334	334	334	335	336	336	336	336	336	336	336	336	336	334	333	334	332	334	334	334	335
309/M	248	248	248	247	245	248	249	249	249	249	249	249	253	254	253	253	253	252	244	244	244	249
309/F	43	43	43	43	42	42	42	42	42	42	42	42	42	42	42	42	42	42	40	40	40	42
Total Act 309	291	291	291	290	287	290	291	291	291	291	291	291	295	296	295	295	295	294	284	284	284	291
Total Non ADC	2,532	2,554	2,565	2,571	2,586	2,551	2,542	2,556	2,556	2,528	2,521	2,528	2,533	2,525	2,510	2,524	2,483	2,428	2,326	2,326	2,326	2,503
Total	18,416	18,426	18,450	18,446	18,458	18,434	18,420	18,420	18,420	18,400	18,396	18,412	18,410	18,411	18,395	18,389	18,197	18,108	17,958	17,958	17,958	18,328
	1	1	1	1	1	1	1	1	1	1	1	1	1	1	1	1	1	1	1	1	1	21

CHAPLAINCY

Monthly Report for: <u>Nov 2015</u>	BENTON	CUMMINS	DELTA REGIONAL	EAST ARKANSAS	EAST ARKANSAS MAX	GRIMES	HAWKINS	MAXIMUM SECURITY	MCPHERSON	NORTH CENTRAL	OUACHITA RIVER	PINE BLUFF	RANDALL L. WILLIAMS	TUCKER	VARNER	VARNER MAX	WRIGHTSVILLE	PTF	TOTAL
Chaplain in Charge	5	13	9	10	2	15	7	15	15	3	17	3	12	7	4	0	17	12	166
Christian																			
Population	5	12	7	4	0	14	6	15	15	3	17	3	12	7	3	0	13	11	147
Segregation	0	0	0	0	0	0	0	0	0	0	0	0	0	0	0	0	0	0	0
Muslim																			
Population	0	1	2	3	1	1	1	0	0	0	0	0	0	0	1	0	4	1	15
Segregation	0	0	0	3	1	0	0	0	0	0	0	0	0	0	0	0	0	0	4
Volunteers in Charge																			
Protestant	17	28	19	42	0	28	6	29	40	48	42	9	9	12	4	1	19	4	357
Catholic	0	1	0	4	1	16	2	1	3	2	1	0	0	1	1	1	4	4	42
Muslim	0	0	0	0	0	0	0	0	0	0	1	0	0	0	0	0	0	0	1
Other	4	0	0	0	0	4	0	1	4	0	4	0	0	0	0	0	0	0	17
Baptism	0	0	0	4	0	9	0	0	35	3	0	0	0	0	0	0	0	0	51
Marriages	1	0	0	1	0	0	0	0	1	0	0	0	0	0	0	0	1	0	4
Distributed by Chaplains																			
Greeting Cards	25	21	0	0	0	145	0	1300	878	1320	35	308	82	84	281	240	0	0	4719
Bibles, Quran, Torah, Etc.	25	37	0	0	0	17	3	16	38	18	162	10	14	260	112	14	11	0	737
Study Course	100	4	0	13	0	8	0	155	0	0	28	16	29	0	76	2	4	0	435
Writing Supplies	20	20	0	0	0	325	800	0	0	82	0	320	0	0	0	0	0	0	1567
Literature	100	1104	200	862	0	250	0	1100	95	600	924	201	420	125	1212	311	300	28	7832
Chaplain's Visits																			
Barracks - How Many Visits	72	83	16	11	8	118	21	273	120	58	80	54	62	79	5	37	17	5	1119
Approximate Hours Spent in Barracks	31	26	8	17	10	24	32	68	80	29	8	17	121	225	5	57	34	15	807
Office (How many Inmates)	87	33	200	5	3	152	73	126	90	85	34	79	71	220	174	0	40	25	1497
How Many Visits Chaplain Made																			
Hospital	0	0	0	0	0	0	0	0	1	0	14	0	0	0	2	0	1	0	18
Infirmary	0	7	2	6	0	31	3	4	5	4	2	4	4	15	0	0	0	0	87
Office	0	17	0	3	0	0	0	30	10	0	42	12	9	11	15	0	0	0	149
Admin Seg	0	9	0	13	0	28	0	56	10	0	7	0	0	0	0	17	0	0	140
Segregation	0	0	0	10	7	28	0	0	10	0	16	4	4	0	0	0	3	0	82
Punitive	0	8	2	10	7	28	0	19	10	1	18	4	4	8	0	9	4	0	132
PC	0	0	0	7	7	0	0	0	10	0	6	0	0	0	0	0	0	0	30
Visitation Days	0	0	0	0	0	0	0	0	10	2	4	0	0	0	0	0	0	0	16
How Many Visits Volunteers Made																			
RCV	2	0	0	48	12	24	6	27	29	0	59	4	20	115	0	0	0	0	346
OCV	4	0	12	8	0	34	34	48	31	12	40	18	48	2	31	0	18	0	340
Spiritual Advisor	0	1	0	0	0	0	0	0	0	5	1	1	6	2	0	2	0	0	18
CRA	19	43	5	57	8	53	20	87	61	79	93	13	12	38	50	16	24	0	678
Total Volunteer Hours	54	57	34	189	12	111	168	532	242	232	474	79	380	163	218	45	60	0	3050
DENOMINATIONAL/VOLUNTEER CHAPLAIN HOURS	76	78	0	0	0	30	140	100	108	130	82	32	205	60	26	5	174	0	1246
Other Activities of Chaplain													8						
Counseled Employees	10	9	3	10	13	24	2	3	1	6	19	18	0	8	17	3	2	1	149
Orientation Sessions	0	6	0	0	0	0	0	0	5	0	0	0	12	3	0	0	0	0	26
Free World Devotions	0	8	0	6	0	0	0	1	2	0	2	12	12	0	5	0	0	0	48
Spoke in Churches	4	28	10	8	0	11	1	4	2	0	6	12	12	0	10	0	0	0	108
Crisis Intervention Sessions	5	9	6	0	0	19	3	6	5	4	0	7	8	18	51	0	20	9	170
Marriage Counseling	3	4	0	1	0	8	0	0	1	1	0	0	0	0	0	0	0	0	18
Denominational Meeting	0	5	0	0	0	1	0	1	1	0	0	0	0	0	0	0	0	2	10
Chaplain's Meeting	0	2	1	0	0	2	0	1	1	1	0	1	1	1	11	0	4	0	26
Volunteer Training Session	1	0	0	0	0	0	0	0	1	0	0	0	0	0	0	0	0	0	2
Choir Trip	0	0	0	0	0	0	0	0	0	0	0	0	0	0	0	0	0	0	0
Staff Movement (Chaplain)	0	0	0	0	0	0	0	0	0	0	0	0	0	0	0	0	1	0	1
Promotions (Chaplain)	0	0	0	0	0	1	0	0	0	0	0	0	0	0	0	0	0	0	1
Interns	0	0	0	0	0	0	0	0	0	0	0	0	0	0	0	0	0	0	0
PAL PROGRAM																			
# Enrolled at start of month	0	45	12	50	0	61	46	20	45	34	46	0	28	61	39	0	30	0	517
# Enrolled during the month	0	7	1	2	0	0	16	2	9	6	2	0	5	6	5	0	3	0	64
Total for this month added to Program (# Removed from the program)	0	52	13	52	0	61	62	22	54	40	48	0	33	67	44	0	33	0	
# Paroled	0	1	0	1	0	2	5	0	12	5	2	0	2	2	0	0	1	0	33
# Withdrew	0	1	0	1	0	0	3	0	1	0	0	0	0	0	3	0	2	0	11
# Complete	0	1	0	4	0	2	0	0	1	1	1	0	0	6	3	0	0	0	
# Removed	0	2	0	0	0	2	0	2	0	1	1	0	0	0	0	0	1	0	9
# Transferred	0	0	0	0	0	1	0	0	3	0	0	0	3	1	2	0	0	0	10
Total for this month subtract from program	0	5	0	6	0	7	8	2	17	7	4	0	5	9	8	0	4	0	
# At the end of the month	0	47	13	46	0	54	54	20	37	33	44	0	28	58	36	0	29	0	499
# Of volunteers	0	9	3	49	0	0	14	11	10	6	11	0	6	7	5	0	4	0	135
Special Events:																			

Construction Budget / Status Report

Report Date - December 10, 2015 Data as of 12/01/15						* Percentage of Completion is the actual construction completion and does not reflect the cost in
Fund	Project Desc	Total Projected Spend	Budget	Available Funds	* % Complete	Notes
7004810	Cummins Chicken Houses	\$5,266,308	\$6,100,000	\$833,692	99%	Poultry houses complete. Birds into House #6 on 8/19/15. Construction coming back for generator and 2nd cooler.
7004811	ORCU Maintenance Shop	\$306,763	\$383,000	\$76,237	95%	Complete, moving in
7004811	ORCU - VoTech	\$445,006	\$817,000	\$371,994	95%	Estimated Completion Date 9/1
7004812	NCU Phase II	\$3,086,403	\$3,127,000	\$40,597	99%	Complete - Held open for Professional Fees.
7004819	Diagnostic/ESTER	\$3,872,482	\$4,000,000	\$127,518	97%	184 Beds opened 7/1/15. Kitchen well underway. 172 beds to open 1/1/16.
7004820	Diagnostic/ESTER	\$1,522,736	\$1,700,000	\$177,264	90%	
700481A	Diagnostic/ESTER	\$1,226,722	\$5,100,000	\$3,873,278	24%	
7004820	Tucker Boot Camp	\$662,445	\$764,088	\$101,643	100%	Complete
NDC0100	Wrightsville Generator	\$182,261	\$200,000	\$17,739	44%	First phase complete
NDC0100	Tucker Parking Lot	\$170,346	\$300,000	\$129,654	95%	Parking Lot complete
NDC0300	HDRS Renovation - Phase II	\$172,258	\$175,000	\$2,742	100%	Complete
Telephone Projects						
Maintenance & Operations	Camera Equipment - All Units	\$262,939	\$500,000	\$237,061	53%	
	Fire Alarm Upgrades (All Units)	\$15,898	\$75,000	\$59,103	21%	
	Locks/Riot Gates - All Units	\$21,836	\$75,000	\$53,164	29%	
	Gates and Fences all units	\$10,467	\$50,000	\$39,533	21%	
	Gas Stations - Canopy (C/O)	\$0	\$12,000	\$12,000	0%	
	Stainless Steel - Kitchen/Shower/Restrooms - All Units	\$27,648	\$150,000	\$122,352	18%	
	ACA Maintenance	\$87,658	\$200,000	\$112,342	44%	
	ADA Projects - All Units	\$521	\$50,000	\$49,479	1%	
	Fast Top Floor Systems - (kitchen/laundry/showers all	\$19,776	\$50,000	\$30,224	40%	
	Lawn Equipment - All Units	\$0	\$20,000	\$20,000	0%	
	Parking Lot - Gravel and Paving - EARU	\$0	\$50,000	\$50,000	0%	
	Parking Lot - Gravel and Paving - Tucker	\$0	\$50,000	\$50,000	0%	
	Parking Lot - Gravel and Paving - Other Units	\$0	\$225,000	\$225,000	0%	
	Subtotal	\$446,743	\$1,507,000	\$1,060,257		
FY15 Carryforward	ORCU Gravel Pit Operations	\$69,043	\$87,762	\$18,719	79%	continual
	Cummins Non-Contact Visitation	\$0	\$30,000	\$30,000	0%	on hold
	Tucker Pole Barn (Reg. Maint.)	\$17,363	\$16,710	(\$653)	104%	
	Metal Ceilings	\$124,418	\$208,955	\$84,537	60%	
	TWWPP Containers 4	\$17,103	\$22,103	\$5,000	77%	
	Tucker New Well	\$0	\$550,000	\$550,000	0%	
	Subtotal	\$227,927	\$915,530	\$687,603		
FY16 New Projects	Dog Kennel/Horse Stable Malvern	\$0	\$48,000	\$48,000	0%	
	Wrightsville Kitchen Roofing Repairs	\$0	\$15,000	\$15,000	0%	
	Wrightsville Emergency Generator continuation	\$0	\$300,000	\$300,000	0%	
	ORU Gym Acoustics	\$0	\$230,000	\$230,000	0%	
	Roof Repairs	\$0	\$35,000	\$35,000	0%	
	Roof Repairs-Tucker	\$2,047	\$20,000	\$17,953	10%	underway
	Roof Repairs-Vamer	\$16,094	\$20,000	\$3,906	80%	underway
	Roof Repairs-East Arkansas	\$0	\$20,000	\$20,000	0%	
	Boiler Repairs	\$18,161	\$100,000	\$81,839	18%	
	Grimes Sallyport	\$4,071	\$10,000	\$5,929	60%	underway
	EARU Firing Range	\$15,896	\$20,000	\$4,104	80%	
	Subtotal	\$36,302	\$788,000	\$751,698	5%	
Subtotal		\$730,940	\$3,240,530	\$2,509,590	23%	

Notes

* Report has not been reconciled against Accountings Reconciled Reports.

* FY2015 Carry forward to FY2016 Project Budget = (FY2015 Actual Spending + FY2016 Approved Budget Amount.)

Medical Grievance Appeals

Unit	Acknowledged/ Received	Rejected	Reviewed & Signed by Dep Director	With Merit	With Merit, but Resolved	% With Merit	Without Merit
Benton	0	0	0	0	0	0%	0
Boot Camp	0	0	0	0	0	0%	0
BOW	5	0	4	0	0	0%	4
CMU	1	0	2	0	1	50%	1
Cummins	22	3	19	5	0	26%	14
Delta	6	0	4	0	0	0%	4
EARU	49	6	22	1	0	5%	21
EARU Max	74	3	45	8	1	20%	36
ESU	2	1	6	0	0	0%	6
Grimes	24	2	23	4	0	17%	19
Hawkins	0	2	0	0	0	0%	0
McPherson	1	0	7	0	1	14%	6
MCWRC	0	0	0	0	0	0%	0
MSU	42	2	50	7	3	0%	40
North Central	5	3	14	2	0	14%	12
NWAWRC	0	0	0	0	0	0%	0
Ouachita	10	3	12	2	0	17%	10
Pine Bluff	3	0	0	0	0	0%	0
Randall Williams	4	1	7	0	0	0%	7
SNN	0	0	0	0	0	0%	0
TRCC	0	0	0	0	0	0%	0
Tucker	12	2	5	0	0	0%	5
Varner	27	20	35	8	0	23%	27
Varner S Max	47	14	54	8	0	15%	46
WRU	2	2	5	1	0	20%	4
WHM	1	0	2	0	0	0%	2
WWR	0	0	0	0	0	0%	0
TOTAL	337	64	316	46	6	16%	264

ADC INPATIENT AND EMERGENCY ROOM UTILIZATION

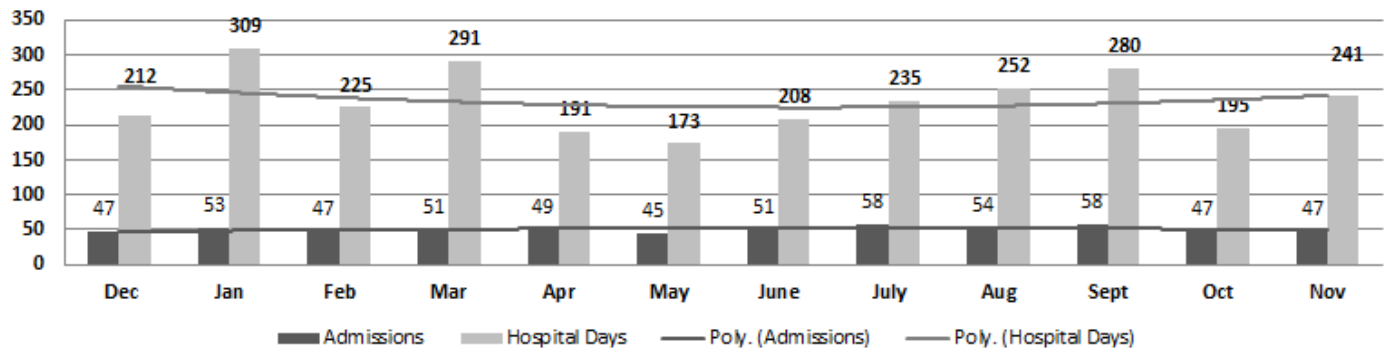
ADC Inpatient Statistics Past 12 Months

	2014	2015											Average
	Dec	Jan	Feb	Mar	Apr	May	June	July	Aug	Sept	Oct	Nov	
Admissions	47	53	47	51	49	45	51	58	54	58	47	47	50.6
Hospital Days	212	309	225	291	191	173	208	235	252	280	195	241	234.3
Average Length of Stay	4.51	5.83	4.79	5.71	3.90	3.84	4.08	4.05	4.67	4.83	4.15	5.13	4.63

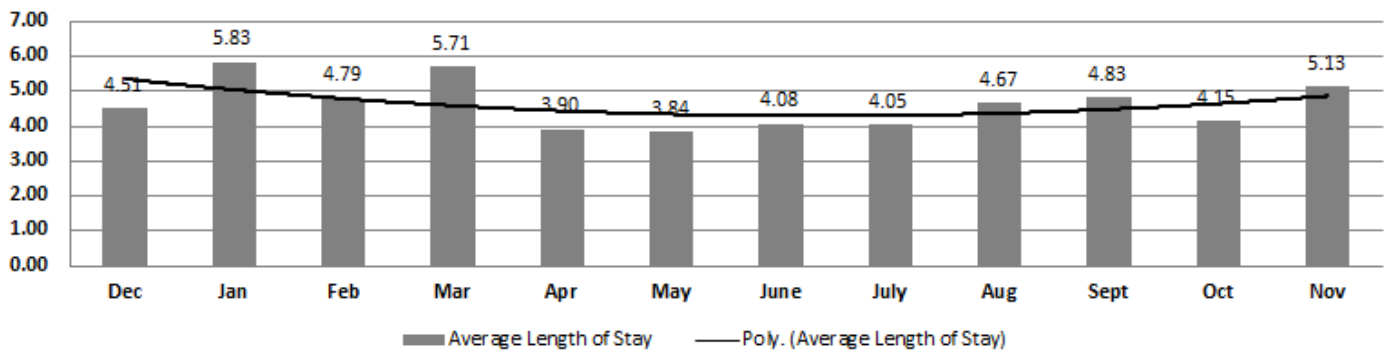
ADC ER Visits Past 12 Months

	2014	2015											Average
	Dec	Jan	Feb	Mar	Apr	May	June	July	Aug	Sept	Oct	Nov	
Emergency Room Visits	65	59	68	79	83	86	77	99	74	76	72	63	75.1

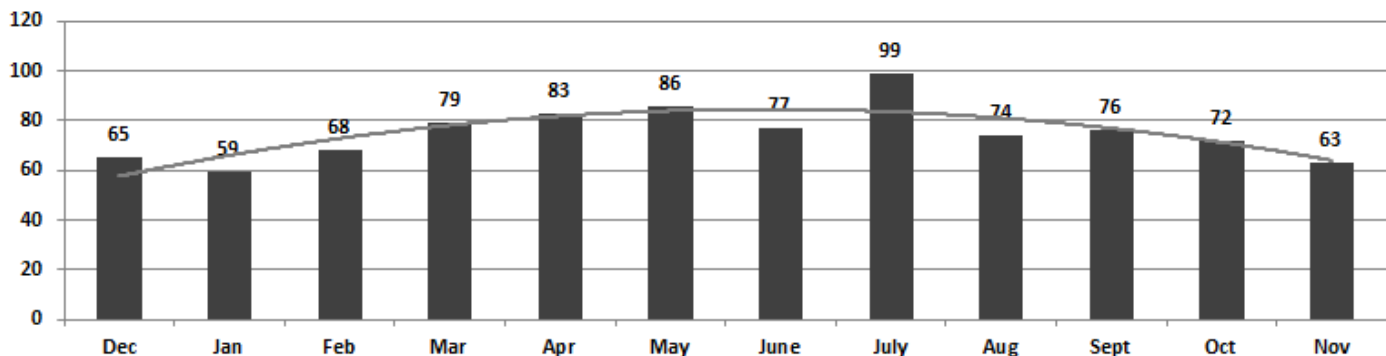
**ADC Inpatient Utilization
Past 12 Months**



**ADC Inpatient Average Length of Stay
Past 12 Months**



**ADC Emergency Room Visits
Past 12 Months**



Monthly Purchasing Report/ Purchase Orders Over \$10,000

VENDOR	DESCRIPTION	LOCATION	PO#	AMOUNT	FUND
JMS Russel Metals Inc	Fabrication Material	Tucker Unit/Industry	4501579338	\$11,593.50	Operational Farm Budget
Miller Bowie Co	Feed	Cummins Unit/Farm	4501579999	\$181,440.00	Operational Farm Budget
Barnes Paper Co	Egg Cartons	Cummins Unit/Farm	4501580085	\$44,061.72	Operational Farm Budget
Mississippi AG Company	Farm Equipment Parts	Cummins Unit/Farm	4501573628	\$11,644.64	Operational Farm Budget
COW Government Inc	Network Service Equipment	Admin East/Information Services	4501581133	\$48,372.20	Operational Budget
Sysco Food Services AR Inc	Food Purchases	Central Warehouse	4501580823	\$44,355.60	Operational Budget
Robbins Sales Co Inc	Food Purchases	Central Warehouse	4501580833	\$62,910.56	Operational Budget
Bob Barker Co Inc	Inmate Clothing	EARU	4501580748	\$31,905.95	Operational Budget
US Foods Inc	Food Purchases	Central Warehouse	4501580800	\$167,957.06	Operational Budget
William R Hill & Co Inc	Food Purchases	Central Warehouse	4501580795	\$180,583.15	Operational Budget
AR Dept of Cor Industries	Inmate Clothing	Delta Regional Unit	4501580512	\$18,650.46	Operational Budget
Galls LLC	Uniforms	Training Academy	4501579889	\$33,013.13	Operational Budget
Servicewear Apparel	Uniforms	Training Academy	4501579764	\$16,625.09	Operational Budget
Fastenal Co	Camera Recorder Installation	Ouachita Unit	4501581472	\$86,205.20	Construction A DFA
AR Dept of Cor Industries	Inmate Clothing	Grimes Unit	4501581399	\$11,738.77	Operational Budget
Bob Barker Co Inc	Inmate Clothing	McPherson Unit	4501581493	\$13,341.12	Operational Budget
AR Dept of Cor Industries	Brogans	Grimes Unit	4501581679	\$14,808.34	Operational Budget
Miller Bowie Co	Feed	Cummins Unit/Farm	4501580012	\$16,984.00	Operational Farm Budget
Razor Chemical Inc	Razors	Delta Regional Unit	4501580565	\$10,785.00	Operational Industry Budget
Westrock Coffee LLC	Food Purchases	Grimes Unit/Industry	4501580456	\$11,933.44	Operational Industry Budget
Sanovo Engineering USA Inc	Repair Parts	Cummins Unit/Farm	4501581095	\$38,697.70	Operational Farm Budget
Crop Production Services Inc	Fertilizer	Cummins Unit/Farm	4501576564	\$119,163.00	Operational Farm Budget
American Paper & Twine Co	Paper Products	Central Warehouse	4501582924	\$33,742.07	Operational Budget
William R Hill & Co Inc	Food Purchases	Central Warehouse	4501582944	\$116,178.36	Operational Budget
Sysco Food Services AR Inc	Food Purchases	Central Warehouse	4501582951	\$52,118.00	Operational Budget
Robbins Sales Co Inc	Food Purchases	Central Warehouse	4501582959	\$78,987.44	Operational Budget
National Food Group	Food Purchases	Central Warehouse	4501582960	\$68,384.80	Operational Budget
AR Dept of Cor Industries	Inmate Clothing	EARU	4501583159	\$19,658.55	Operational Budget
Landers Chevrolet Hummer	Passenger Vans	Admin East/Purchasing	4501581659	\$655,728.00	Work Release
Green & Chapman Inc	Ethanol Gas & Low Sulfur Diesel	Wrightsville Unit	4501573113	\$16,768.14	Operational Budget
AR Dept of Cor Industries	Inmate Clothing	Tucker Unit	4501583954	\$56,341.07	Operational Budget
Diamond International	Vehicle Repair	Benton Unit	4501582113	\$10,931.75	Work Release
Falk Supply Company Inc	Circulating Water Heater	Cummins Cold Storage Facility	4501583750	\$13,399.69	Operational Farm Budget
AR Dept of Cor Industries	Brogans	EARU	4501584278	\$28,877.95	Operational Budget
Fastenal Co	Metal Ceiling Supplies	Max Sec Unit	4501584248	\$31,450.86	Inmate Telephone Const Proj
US Foods Inc	Food Purchases	Central Warehouse	4501584231	\$69,274.80	Operational Budget
Liqui-Box Corporation	Plastic Bags	Cummins Creamery	4501584113	\$10,535.00	Operational Farm Budget
Beyrl Bitely & Sons Trucking Inc	Hauling Service	Cummins Unit/Farm	4501578621	\$11,400.21	Operational Farm Budget
Seedway LLC	Garden Seed	Cummins Unit/Farm	4501584914	\$116,680.00	Operational Farm Budget
Wholesale Electric Supply Co Inc	Generation Installation	Cummins Unit/Farm	4501584793	\$14,807.77	Operational Farm Budget
Shoe Corporation of Birmingham	Brogans	Tucker Unit/Industry	4501584117	\$12,776.40	Operational Industry Budget
AR Dept of Cor Industries	Paper Products	Central Warehouse	4501585429	\$300,576.25	Operational Budget
Senstar Inc	Fence Material	Wrightsville Unit	4501573429	\$16,258.37	Operational Budget
M J Kellner Co Inc	Food Purchases	Central Warehouse	4501585426	\$186,048.00	Operational Budget
Printing Papers Inc	Xerox Paper	Central Warehouse	4501585419	\$26,200.40	Operational Budget
AR Dept of Cor Industries	Janitorial Supplies	Central Warehouse	4501585421	\$63,000.16	Operational Budget
Fastenal Co	Battery Back-Ups	Various Units	4501585407	\$26,582.43	Inmate Telephone
Shoe Corporation of Birmingham	Brogans	Tucker Unit/Industry	4501582613	\$15,241.25	Operational Industry Budget
Robbins Sales Co Inc	Food Purchases	Central Warehouse	4501585980	\$81,129.44	Operational Budget
William R Hill & Co Inc	Food Purchases	Central Warehouse	4501585962	\$224,585.86	Operational Budget
National Food Group	Food Purchases	Central Warehouse	4501585990	\$22,809.92	Operational Budget
Pollution Management Inc	Asbestos Removal	Ester Unit	4501585430	\$30,236.13	Const A DFA Ester II