



## PUBLIC RELATIONS

### RESEARCH/PLANNING

**November 2018 Admissions and Releases** – Admissions for November 2018 totaled **603** (511-males & 92-females) while releases totaled **777** (655-males & 122 females) for a net decrease in-house of **174** inmates.

**Inmate Population Growth/Projection** – At the end of November 2018, the jurisdictional population totaled **17,666** representing a decrease of **412** inmates since the first of January 2018. Calendar year 2018 has had an average decrease of **37** inmates per month, down from an average growth of **45** inmates per month during calendar year 2017.

**Average County Jail Back-up** – The backup in the County Jails averaged **1,631** inmates per day during the month of November 2018 – up from an average of **1,577** inmates per day during the month of October 2018. Of the **1,631** average, short-term revocations averaged **548** (483-males & 65-females) during the month.

### SOCIAL MEDIA

Facebook results for November showed a total of seven thousand sixty-nine (7,069) “likes” of our page, an increase of four hundred seventy-one (471) from the previous month. More than 130,000 Facebook users were reached by a post highlighting the Shorter College graduation on November 30th.

## LEGAL SERVICES

### PREA

#### PREA Hotline Data:

Number of Calls Received	237
Total PREA Issue Calls	7
Total Non-PREA Calls	124
Total Calls Referred to Internal Affairs Division	18
Total Repeat Calls	63
Total Calls with No Message	43
Total Technical Failure Calls	5

Internal Affairs is handling all PREA investigations. The ADC PREA Hotline experienced a technical issue during the month. At that time, all proper notifications were made and calls continued being received through the Arkansas Crime Information Center.

## INMATE INSTITUTIONAL GRIEVANCES

**Inmate Formal/Informal Grievances:** During November 2018, a total of one thousand six hundred fifty (1,650) formal grievances and two thousand six hundred eighty-six (2,686) informal grievances were filed at various units.

**Institutional Grievances Appeals:** There were a total of four hundred seventy-four (474) appeals of institutional grievances received in November 2018. Four hundred eleven (411) were acknowledged and sixty-three (63) were rejected for various reasons. A total of four hundred twenty-seven (427) appeals were answered; four hundred twenty-two (422) had no merit and five (5) were found with merit.

## INSTITUTIONS

### STTG

During the month of November, the STTG Coordinator, along with K9 officers, provided assistance in three BCOT special assignments on the 5th, 6th, and 19th. They also conducted an STTG sweep of the Ouachita River Correctional Unit on the 15th. Additionally, the STTG Coordinator taught the BCOT STTG class on the 28th.

### FARM

Rain continued to affect row crop operations during the month of November. EARU completed their harvest on November 29th, which was one month behind last year's harvest. Tucker and Cummins continue to work around weather events to finish harvesting their crops.

Garden harvests during the month yielded greens and sweet potatoes. Efforts will now focus on the green houses and the planting of transplants in February.

The poultry operation worked on depopulating house #5 during the month. The pullets that will go into that house have been vaccinated and will be moved around Christmas when they reach the age of 16 weeks. New chicks for the pullet house are scheduled to arrive on January 19, 2019. Egg prices have been very good, which is normal going into the holiday season.

Two job openings for the confined livestock area at Cummins were posted. One position will serve as a rover while the other will be a dairy supervisor to fill a vacancy created when a former employee left for a job with the University of Arkansas.

**FARM, continued**

The fall pregnancy check and inventory of the beef herds were completed. The conception rates were above average at Cummins and around average at Wrightsville. Open cows will be sent through the plant at Cummins, which will be more economical than feeding them during the winter.

**REGIONAL MAINTENANCE HOURS**

Regional Maintenance Hours	November 2018
Benton Unit	7,576
Delta Regional Unit	952
East Arkansas Regional Unit	1,328
Grimes Unit	432
McPherson Unit	1,592
Mississippi County Work Release	832
North Central Unit	7,448
Ouachita River Unit	1,392
Randall L. Williams Unit	2,704
Texarkana Regional Correctional Center	547
Tucker Unit	1,032
Varner Unit	1,896
Wrightsville Unit	888
<b>Total Hours</b>	<b>28,619</b>

**WORK RELEASE RENT REPORT**

Unit	November 2018
Benton Unit	\$87,720.00
Mississippi County Work Release	\$56,627.00
Northwest Arkansas Work Release	\$39,236.00
Pine Bluff Work Release	\$28,679.00
Texarkana Regional Correctional Center	\$50,460.00
Wrightsville/Hawkins Work Release	\$25,483.00
<b>Total</b>	<b>\$288,205.00</b>

**WAGE****(Workforce Alliance for Growth in the Economy)**

Unit	Slots	Completed	Discharged	End Count
Delta	13	0	0	13
Ester*	0	0	0	0
Hawkins	36	10	12	16
Ouachita River	10	0	0	10
Tucker	20	0	2	18
Wrightsville	36	7	3	26
<b>Total</b>	<b>115</b>	<b>17</b>	<b>17</b>	<b>83</b>

\*The WAGE Program at the Ester Unit is currently inactive due to the program transitioning to a new computer system at SEARK College.

**RANDALL L. WILLIAMS**  
**JUVENILE EDUCATION PROGRAM**

	Slots	Enrolled	Discharged	End Count
Juveniles*	20	10	2	9

\*Juveniles are transferred from the program once they reach the age of eighteen (18). The Juvenile count also changes based on new commitments. During the month, one (1) inmate was on punitive status. There was one (1) new commitment.

**ADMINISTRATIVE SERVICES****PROCUREMENT SECTION UPDATE**

**Procurement/Contracts Report (required by policy)**– For November 2018, Purchase Orders and Contracts in excess of \$10,000 amounted to \$3,693,132.09. Of this amount, \$1,398,099.07 was for Inmate Care and Custody-related items (food, shoes, clothing, etc.). Bulk fuel costs for the month of November were \$29,372.14 – average cost of E-10 was \$2.39/gallon; average cost for bulk diesel was \$2.57/gallon.

**HUMAN RESOURCES UPDATE**

**Workplace Safety** – During the month of November, the modified version of the Health and Safety Plan was presented to one (1) Basic Training class with a total of eighty-three (83) cadets in attendance.

Eighty-seven (87) incidents were reported to the Company Nurse in November, bringing the total of reported incidents to eight hundred thirteen (813) in 2018.

**HUMAN RESOURCES UPDATE, continued**

**Benefits** – There were sixty-five (65) FMLA requests processed during the month; sixty-one (61) were approved and four (4) denied. A total of ten (10) catastrophic leave requests were received; eight (8) were approved, one (1) was denied, and one (1) was pending at the time of this report.

**Physical Assessments** – A total of one hundred eighty-eight (188) applicants and incumbent personnel were assessed during November. All of the eighty-two (82) incumbent personnel successfully passed the physical assessment. One hundred three (103) applicants successfully passed the physical assessment, and three (3) did not. Two (2) of those rescheduled and passed after receiving a physician's release, and one (1) has not rescheduled.

**Employment** – A total of one thousand seven hundred fourteen (1,714) applications were received during November. Sixty (60) Non-Security applications and eighty-four (84) CO I applications were processed. Seventy-five (75) Correctional Officers were hired, and eighteen (18) Correctional Officers were rehired.

**ADC personnel attended the following Job Fairs/ Recruitment Events in the month of November:**

Date	Unit	Location
11/7/18	McPherson	Goodwill/Jonesboro
11/7/18	Wrightsville	Career Fair/UCA
11/8/18	Tucker	Career Fair/UCA
11/9/18	McPherson	McPherson Unit
11/16/18	MAX	Maximum Security Unit

**CO I interviews were conducted in the month of November at various units throughout the department:**

Date	Unit	Date	Unit	Date	Unit
11/1/18	Grimes Varner	11/12/18	MAX	11/27/18	Tucker Varner
11/5/18	McPherson	11/14/18	MAX	11/28/18	Cummins MAX McPherson
11/6/18	EARU McPherson	11/15/18	Delta Grimes MAX McPherson	11/29/18	Grimes NCU
11/7/18	Cummins	11/19/18	Delta	11/30/18	TRCC
11/8/18	Grimes TRCC Varner	11/20/18	Grimes MAX		
11/11/18	Varner	11/21/18	Varner		

**Vacancies, Hires, and Terminations –**

During the month there were a total of four hundred twelve (412) security and non-security vacancies, one hundred six (106) new hires, one hundred twenty-four (124) terminations, and six (6) retirements throughout the department.

**ADMINISTRATIVE SERVICES DIVISION  
MONTHLY REPORTS INCLUDE GIFTS,  
GRANTS, DONATIONS / INMATE WELFARE  
FUND BALANCE (required by policy):****Gifts, Grants and Donations:**

Donations made in the month of November totaled \$1,115.00 [one (1) Samsung copier and six hundred thirty (630) books]

The **Inmate Welfare Fund** balance on November 30, 2018 was \$7,689,316.13.

The **PAWS in Prison Fund** total on November 30, 2018 was \$242,428.79. ADC Account (7004822/Donations) balance was \$19,159.55, ADC Account (NDC0500/Recycling) balance was \$103,758.01, and the ADC Paws in Prison Non-Profit account (Quickbooks) balance was \$119,511.23.

**INFORMATION TECHNOLOGY****SECURUS VIDEO VISITATION (SVV) PROJECT****SVV Dog Kennel Installation:**

- Cummins Unit – Still pending installation

**Inmate Video Visits:**

- Inmates completed three thousand three hundred ninety-nine (3,399) video visits during November and missed one hundred thirty-three (133).

**SECURUS TABLET PROJECT:**

- A total of one thousand five hundred ninety-five (1,595) tablets were leased during November.

**IT/eOMIS ACTIVITIES**

- **County Jail Invoices** – The county jail invoicing process was reviewed in order to identify a solution that will allow county staff to have time to review and accept invoices. The ability for LLE to enter a comment on why a change to the number of days and amounts billed is necessary. Currently, eOMIS locks the invoice within 24 hours when the option "review & accept" has not been selected to complete the process. This lock prevents LLE from being able to complete a review and process the invoice electronically. Marquis stated that they can program the system to lock after 180 days or completely remove the lock for ADC invoices and work with ACC to develop a lock specifically for county jail backlog invoices. The process is still in review.

## INFORMATION TECHNOLOGY, *continued*

- The company IDEMIA is installing new Automated Fingerprint Identification System (AFIS) LiveScan machines for the Arkansas State Police in McPherson and Ouachita intake areas. The new equipment requires a static public IP address to be compliant with Criminal Justice Information Services Division (CJIS) standards.
- A meeting was held with DIS on the Datacenter Optimization (DCO) Project. The meeting began the initial Push/Pull team information transfer from the ADC Technology Department to DIS of our hosted applications, licensing, funding, infrastructure, service level agreements, and contracts. The AIMS Push Team Questionnaire, distributed by DIS, is being completed to provide this information. DIS requested a 30-day turnaround on providing the information. We are working to complete by December 7th.
- IT is currently testing and working on the following:
  - Testing Windows 10 operating system #1803 update
  - Testing McAfee agent 10.6 for new computer updates
  - Testing Windows Server Update Services (WSUS) third party patching and Server 2019 for WSUS [WSUS is installed at each correctional facility to support Windows updates on the Local Area Network (LAN), reducing bandwidth traffic on the Wide Area Network (WAN).]
- Testing new web-based DIS VPN with IE and Chrome on both ADC network and Verizon hotspots [All attempts failed.]
- Working on programming code for the silent, remote uninstall of unwanted software.
- Working through an audit of INA deposit data for 2018 [The top 12 credit cards were reported to Internal Affairs and Emergency Preparedness.]

## TRAINING ACADEMY

### IN-SERVICE DIVISION –

**Security for Non-Security** – The *40-Hour Staff Course* was offered November 1st and 2nd, the *16-Hour Contract Staff Course* was held on the 5th and 6th, and the *8-Hour Course for Volunteers* was conducted on the 7th. These courses highlight a variety of issues that staff members should be aware of as they enter a correctional environment. Online prerequisite training through eCADEMY prior to the classroom sessions is required. Course topics include: Games Inmates Play, Emergency Preparedness, PREA, Sexual Misconduct, Fire Safety in Corrections, and more.

**Ethics/Conduct Standards** was presented on November 8th. This class is designed to instill an understanding of how ethics impact an organization.

### Fire and Safety/Chemical Safety/Chemical Right

**to Know** is a refresher course which was offered on November 8th designed to remind staff members of their role in fire safety, proper use of chemicals and rights when dealing with chemicals.

**Sexual Harassment** was presented on November 8th.

Designed for all staff, this class addresses sexual harassment and the right to be free from it in the workplace.

**Use of Force** was offered on November 8th. Situations may occur when staff members are put into positions where force may be necessary. This class addresses the legal issues concerning the use of force.

**Use of Restraints** was presented on November 8th for staff that hold positions where handcuffs and other restraints are not used on a daily basis. This class features hands-on exercises allowing staff from each unit to practice using hand restraints, leg irons, belly chains, and tethers.

**Taser Training**, a six-hour course, was offered on November 5th and 13th. Participants were taught the practical and legal uses of the Taser X-26 electronic device by a department-certified trainer. Once certified, students are required to obtain recertification every two years.

**Train the Trainer: Learning Transfer Impact** was offered November 26th through 30th. This training course is for people who are called upon to develop and conduct training for others. The course offers delivery methods that can be used to enhance the learning experience and is detailed with intensive trainee involvement.

### eCADEMY –

During the month of November 2018, six hundred seven (607) ADC employees completed a total of 5,730.65 hours of eCADEMY training. Approximately 11% of ADC employees completed at least one course during that timeframe, averaging 1.25 hours per employee. The Computer Lab is open on a daily basis for employees who wish to complete online training through eCademy.

### BASIC TRAINING DIVISION –

Under the direction of Instructor Jason Price, **BCOT Class 2018-N** graduated on November 6th with seventy (70) cadets. Davita Rucker of the Pine Bluff Unit received the Willis H. Sargent Award. Deputy Warden Emmer Branch of the East Arkansas Regional Unit served as the guest speaker.



## HEALTH/CORRECTIONAL PROGRAMS

### CHAPLAINCY SERVICES

**East Arkansas Regional Unit** – EARU held a Veteran's Day celebration on November 11th attended by seventy-eight (78) inmates and twelve (12) guests. Kairos Walk #4 started at the unit on the 29th.

**Ester Unit** – On November 8th, the Ester Unit Chapel hosted a Veterans Day program in which eighty-three (83) inmates attended. The Chapel also sponsored a fall music concert that same evening, which was attended by one hundred forty-four (144) inmates.

**Grimes Unit** – On November 9th, volunteers from "The Storybook Project" visited the unit. Thirty-four (34) inmate participants received assistance in creating recordings of books for their children.

**Maximum Security Unit** – On November 21st, CRA Renie Rule sponsored a cookie distribution through Chaplaincy Services in which each inmate in the facility received cookies. For Thanksgiving, the Chapel provided soups to all inmates.

**McPherson Unit** – On November 14th, seven (7) volunteers from "The Storybook Project" came to the unit and assisted one hundred twenty-seven (127) inmates in making recordings of books for their children.

**North Central Unit** – On November 2nd, the Chaplaincy Division distributed one thousand two hundred (1,200) Thanksgiving cards at the unit. Twenty-nine (29) inmates graduated from "Financial Peace" on the 3rd.

**Pine Bluff & Randall L. Williams Unit** – With the assistance of twenty (20) volunteers, sixteen (16) inmates completed a Kairos Walk on November 1st-4th.

**Tucker Unit** – The unit facilitated an "Alternative to Violence" seminar on November 2nd-4th attended by twelve (12) inmates and three (3) volunteers.

**Varner Unit** – On November 7th, Dr. Fitz Hill visited the unit and spoke with the UNITY class sponsored by Deputy Warden Byers.

**Wrightsville Unit** – St. Luke Baptist Church held a Thanksgiving concert service on November 20th that was attended by one hundred eighty (180) inmates, twenty-four (24) volunteers and three (3) staff members.

### ACCREDITATION

#### ACA Internal Audits Completed:

11/1–11/9 Pine Bluff Complex File Review  
11/15–11/16 Delta Unit File Review  
11/19–11/20 Delta Unit File Review

#### Classes Taught:

11/14 BCOT - Training Academy

### MENTAL HEALTH SERVICES

#### Sex Offender Treatment Program (SATP):

	Slots	Completed	Removed	Clients
RSVP	238	0	4	238
SOFT	30	3	0	9
<b>Total</b>	<b>268</b>	<b>3</b>	<b>4</b>	<b>247</b>

There are eight hundred seventy-nine (879)\* males on the waiting list for RSVP and five (5) females on the waiting list for SOFT within five (5) years of their TE date. Of those, forty-one (41) inmates are mandated by the Parole Board.

The average time on the waiting list from request is between one (1) and two (2) months for those stipulated.

The total on the waiting list, including those not currently within the identified time-frame, is one thousand five hundred fifty-four (1,554) males and five (5) females. There is one (1) PREA inmate in the program at this time.

**\*The waiting list numbers include inmates that are ineligible due to class or housing status.**

#### Therapeutic Community (TC):

Unit	Slots	Completed	Removed	Clients
Tucker	136*/**	12	16	132
Wrightsville	50*/**	4	4	48
McPherson	53*	3	9	49
<b>Total</b>	<b>239</b>	<b>19</b>	<b>29</b>	<b>229</b>

There are three hundred fifty-one (351) males and eleven (11) females on the waiting list within eighteen (18) months of their release date. Of those, eleven (11) are mandated by the Parole Board.

The average time on the waiting list from request is twenty-three (23) days.

The total on the waiting list, including those not currently within the identified timeframe, is nine hundred fifty-one (951) males and thirty (30) females.

**\*Denotes transitional beds available at this treatment program. The Tucker Therapeutic Community has one hundred thirty-six (136) client slots and seven (7) peer counselor slots. \*\*Treatment count has increased due to reduction of peer counselors and peer mentors.**

**MENTAL HEALTH SERVICES, continued****Substance Abuse Treatment Program (SATP):**

Unit	Slots	Completed	Removed	Clients
Grimes	56*	3	4	52
McPherson	106*	27	8	97
Maximum Security	3	0	0	3
Randall L. Williams	200*/**	37	12	173
Benton	36*	4	2	36
Varner	52*/**	5	1	45
Wrightsville	150*/**	18	15	139
<b>Total</b>	<b>603</b>	<b>94</b>	<b>42</b>	<b>545</b>

There are one thousand four hundred fifty-five (1,455) males and eighty-eight (88) females on the waiting list within eighteen (18) months of their release date. Of those, forty-two (42) are mandated by the Parole Board.

The average time on the waiting list from request is fifteen (15) days.

The total on the waiting list, including those not currently within the identified timeframe, is two thousand seven hundred seventy-three (2,773) males and two hundred seven (207) females.

\*Denotes transitional beds available at this treatment program.

\*\*Treatment count has increased due to reduction of peer counselors and peer mentors.

**ORCU Residential Program Unit (RPU):** The RPU at Ouachita had four (4) admissions and three (3) discharges in November for an end-of-month count of one hundred twenty-four (124).

**McPherson Mental Health Residential Program Unit (RPU):** There were four (4) admissions and two (2) discharges in November, for an end-of-month count of thirty-eight (38).

**Habilitation Program:** The Habilitation Program at the Ouachita River Correctional Unit provided treatment services to forty-seven (47) inmates during November. There were three (3) admissions and three (3) discharges for an end-of-month count of forty-four (44).

**Restrictive Housing (RH) Anger Management**

**Treatment:** The RH Anger Management Treatment Program at the Cummins Unit provided treatment services to twenty-eight (28) inmates during November. There were no admissions and twenty-two (22) discharges for an end-of-month count of six (6).

**Staffing:** The following Mental Health Services and SATP positions were vacant in October and November:

Positions	October	November
Psychologists	6	6
Social Workers	12	13
Advisors	9	10
Substance Abuse Program Leaders	1	1
Administrative Specialists/Analysts	1	3
Psychological Examiners	1	1

**ADDITIONAL MENTAL HEALTH AND MEDICAL INFORMATION****Self-Study Classes:**

Classes	# of Participants	# Completed	Waiting List
Anger Management	334	295	929
Thinking Errors	453	382	837
Substance Abuse Education	149	126	320
Communication Skills	313	279	1019
Domestic Violence	89	76	330
Victims of Domestic Violence	15	15	23
Stress Management	334	302	913
Parenting	300	205	449

**Suicide:** There were sixty-eight (68) suicidal threats during November. There were five (5) attempts resulting in zero (0) deaths.

**Outpatient:** There were two thousand sixty (2,060) inmates on the mental health medical log at the beginning of November. Mental Health staff conducted the following contacts during November:

Case Management Contacts	2,030
Requests for Interviews	1,136
Testing	5
Intakes	492
Unit Requests	841
Pre-Lockup Reviews	354
Routine Restrictive Housing Reviews	728
Restrictive Housing Rounds	18,844
PREA Evaluations	93
Routine Follow-up	12
834 Requests	29

**County Mental Health Requests:** During November, there were eighty-eight (88) requests of a mental health nature received. Fifty-one (51) inmates were fast-tracked to ADC.

**County Medical Health Requests:** During November, there were two hundred eighty-eight (288) requests of a medical nature received. Four (4) inmates were fast-tracked to ADC.

**Monetary Sanctions:** Sanction reimbursements for October were \$20,550.00.

**Deaths:** There were two (2) inmate deaths during the month of November; one (1) was claimed and one (1) was cremated.

**CCS:** See attachment for CCS's report regarding outside beds and emergency room visits.

**Medical Grievances:** In November, there were one hundred thirty-nine (139) appeals of medical grievances received and one hundred fifty-two (152) appeals were answered; thirteen (13) of those were found to be with merit and six (6) with merit but resolved.

### SEX OFFENDER ASSESSMENT

#### Assessments Completed:

Risk Level	November	September 1999 through November 2018
Level 1	2	1,184
Level 2	29	7,409
Level 3	17	6,751
Level 4	0	649
Default 3	3	*
<b>Total</b>	<b>51</b>	<b>15,993</b>
*Default Level 3's are included in the total number of Level 3's to date.		

#### ACIC Numbers:

The total number of sex offenders registered from September 1999 through November 2018:

Compliant	8,009
Delinquent	1,058
Confined	3,179
Out-of-State	3,456
Address Unknown	214
Deported	184
Incapacitated	85
Out of USA	7
<b>Total</b>	<b>16,192</b>

Due to a change in Arkansas law, deceased offenders no longer remain on the registry. SOCNA was notified by ACIC of eleven (11) offenders removed due to death since 1/1/2018.

### THINK LEGACY

Unit	Slots	Completed	Removed	Assigned
Cummins	55	7	12	41
Delta Regional	24	5	0	24
East Ark. Regional	50	2	2	47
Ester	107	12	0	82
Grimes	56	7	2	56
Hawkins (Female)	40	1	0	38
McPherson	68	9	4	68
North Central	59	5	0	55
Ouachita River	46	3	0	39
Tucker	55	2	7	51
Varner	49	3	2	49
Wrightsville	48	17	1	48
<b>Total</b>	<b>657</b>	<b>73</b>	<b>30</b>	<b>598</b>

There are one hundred sixty-nine (169) males and one hundred seventeen (117) females on the Think Legacy waiting list. All Think Legacy applicants are within eighteen (18) months of their TE or discharge date.

The average time on the waiting list is approximately sixty (60) days. There were one hundred fifty-four and three quarters (154.75) volunteer hours recorded for the month of November.

Think Legacy hosted a "Cooking Matters" graduation on November 1st at the Hawkins Unit. A WAGE certificate ceremony was held at the McPherson Unit and Goodwill hosted an employability class at the Tucker Unit on the 2nd. Grimes began the "Letter Writing to Children" program pilot, instructed by the University of Arkansas-Fayetteville on the 19th. The Ester Unit held a Think Legacy graduation on the 29th.

**VOLUNTEER SERVICES****Total Number of Volunteer Hours for November 2018:**

Unit/Program	Hours
Cummins Unit	1
Delta Unit	14
East Arkansas Regional Unit	6
Hawkins Unit	13
McPherson	4
Northwest Arkansas Work Release	17.25
Ouachita River Correctional Unit	26
Pine Bluff Complex	16
Varner Unit	39
PAWS	18
Think Legacy - All Units	154.75
Religious Services/Chaplaincy - All Units	5,217
<b>Total Hours</b>	<b>5,526</b>

**PAWS IN PRISON****Currently Enrolled in Training:**

Maximum Security Unit	7
Tucker Unit	7
Hawkins Unit	5
Randall L. Williams Unit	4
Ouachita River Unit	3
North Central Unit	8
<b>Total</b>	<b>34</b>

**Completed Training:**

November 2018	20
YTD 2018	205
Since Inception (Dec. 2011)	1,227
Dogs Currently in Foster: ( <i>Graduated but not adopted</i> )	4
Volunteer Hours	18

**CONSTRUCTION/MAINTENANCE****PROJECT UPDATES****Central Office:**

The contract for roof replacement was awarded and work is underway. The contractor is tearing off the old roof at night and the day crew is replacing what was torn off.

**Cummins Unit:**

DBA has approved the plans for a new emergency generator. The project to change the doors in Barracks 13 to solid doors has been completed. The estimates for changing metal desks to concrete are being prepared. A contract was awarded to WD&D to design precast recreation yards. The architect is working on plans to submit to DBA. A significant cost-savings measure was offered and accepted to lower the maximum height of the precast walls to 12 feet. The sally port building is ready to accommodate a new body scanner. A shakedown room is being built to replace the one now housing the scanner equipment.

**Cummins Poultry:**

Generators are tested weekly. A meeting was held with the architect to discuss making changes to the loading ramp for coolers at the chicken houses. Changing the existing forklift to one with different steering remains under consideration. Loaner forklifts are being used on a trial basis to determine what works best. Rear-wheel forklifts, while able to get up the ramp, are too large to operate inside the cooler.

**Cummins School:**

Structural steel for the building has been erected, and exterior walls, insulation and roof are in place. Interior stud walls are in place and the electrical work is underway.

**Delta Unit:**

Entegrity has completed all lighting and plumbing upgrades. The compost shed has been completed and compost equipment has been installed. Wood pellets were delivered and staff has been trained on the compost operation. Work on the mechanical equipment and HVAC replacement is approximately 55% completed.



## PROJECT UPDATES, *continued*

### **East Arkansas Regional Unit:**

DBA has approved the plans for the precast recreation yards which were submitted by the architect. Plans were revised to include a walkway for officers. A significant cost-savings measure was offered and accepted to lower the maximum height of the precast walls to 12 feet. Work with a vendor on precast pricing is underway. Two emergency generators were received and transfer switches were scheduled to arrive November 7, 2018. One was received and is nearly installed. The second is pending delivery. Entegrity has completed all lighting upgrades, solar array installation, and compost equipment installation; as well as wood pellets delivery and staff training. Plumbing upgrades are approximately 98% complete. Work with Entegrity on the Entergy contract for providing electric service to the new solar system has been approved and returned to Entergy. Contracts have been signed for power from the solar panels and for upgraded LED lighting for the perimeter. Work on the HVAC upgrades are approximately 35% complete, and boilers are being replaced. The sewer lift station is now operational following the completion of repairs. As-needed repairs and/or replacement of serving line components have been completed and serving line is now operational. A new body scanner location has been completed with the installation of the scanner and second electrical circuit.

### **Maximum Security Unit:**

Construction crews are helping maintenance with various repairs. DBA has approved the plans for an emergency generator and a bid package will be prepared. A contract was awarded to the architect who is now preparing plans for the precast recreation yards. A significant cost-savings measure was offered and accepted to lower the maximum height of the precast walls to 12 feet. Work continues on repairs of roof leaks. Installation of replacement skylights, which were the source of numerous roof leaks, is underway. In addition, a fire hydrant is being installed and leaks in an 8" fire main are being repaired.

### **McPherson Unit:**

The architect completed the design of the additions to the visitation and administration areas. The plans have been approved to proceed by DBA.

### **Ouachita River Correctional Unit:**

Gravel operations continue and the rock crusher is operational. Repairs to the lift station have been completed. Two new 20 hp pumps are operational, and interior piping was replaced with six-inch stainless steel. Design review comments for a new dog kennel were received from DBA and a response is being drafted.

### **Pine Bluff Unit:**

Construction continues on Barracks 9 to reinforce the security of exterior walls by adding concrete blocks to the inside of the exterior walls. The request to use excess funds remaining from the 9D project to add "cinder block" walls, replace lighting and add stainless steel to the shower areas for the remainder of Barracks 9 was approved. Work on Barracks 9A is currently underway.

### **Tucker Unit:**

Regular monitoring of the waste water plant continues with repairs and adjustments being made as needed to remain in compliance. All media for the seven filters has been changed out, passed testing, and the filters are operational. Engineers have prepared plans to add new water filters and aeration for the water plant. Both the Arkansas Department of Health and DBA have approved the plans. A bid package for the new pressure filters is being prepared, and plans, for the building of filters, are being prepared. Partial funding of the total plant renovation was received from the Governor's Office. Documents for selecting a design firm are being prepared. A construction crew is helping maintenance with various repairs. A room adjacent to the sally port building, to accommodate a new body scanner, was completed. The scanner will be installed in December.

### **Varner Unit:**

Cell doors in the Max Unit are being repaired. Demolition of the isolation recreation yards was completed and six pens have been installed. All panels were built, stored in the Weld Shop and are now being installed. Bull pens for the open barracks are being built and installed. One bull pen was initially used for demonstration purposes, which received management approval. A total of 13 have been completed, with nine remaining. A room adjacent to the sally port building, to accommodate a new body scanner, was completed. The scanner will be installed in December.

### **Wrightsville Unit:**

DBA has approved the plans for new emergency generators and a bid package is being prepared. The contract to replace the Industry Warehouse roof was approved. Crews have begun working on electrical repairs. Materials for the roofing project were delivered and crews are installing the roof.

### **Wrightsville Hawkins Unit:**

DBA approved the plans for an additional generator for the kitchen and lighting and a bid package is being prepared.

## CONSTRUCTION/MAINTENANCE PERSONNEL UPDATE

**The following Construction/Maintenance position(s) were vacant at the end of November 2018:**

- 2 Project Specialists

## 2018 INFORMAL GRIEVANCE REPORT

Month	BENTON	HAWK/M	HAWK/F	WRTS	EARU & MX	GRIMES	RLW	MCWR	MCPH	MSU	NCU	PBU	NWA	TU	TRCC	VSMX	VU	CU	ORCU	Ester	DRU	Bowie Cty	TOTAL
JAN	3	13	28	71	434	162	47	0	337	202	105	60	0	128	1	591	82	240	318	45	191	67	3,125
FEB	3	20	34	77	283	160	26	1	237	160	74	43	0	109	1	507	63	256	267	31	211	59	2,622
MAR	1	5	27	74	430	158	44	0	343	192	192	37	1	91	0	555	76	223	253	51	155	61	2,969
APR	2	9	15	114	410	171	60	0	315	202	138	42	0	121	2	359	112	191	318	43	122	69	2,815
MAY	0	19	20	103	569	169	69	0	357	198	140	25	1	150	0	416	59	189	348	26	124	72	3,054
JUN	0	20	28	109	471	189	38	0	289	167	184	35	0	142	1	452	53	166	438	34	150	51	3,017
JUL	0	25	39	86	471	230	33	0	323	162	214	25	1	99	1	469	64	236	405	47	108	4	3,042
AUG	1	25	24	89	491	233	31	0	116	168	213	35	1	76	0	614	86	253	345	42	139	41	3,023
SEPT	1	15	17	90	262	266	37	0	218	154	137	3	0	157	0	544	69	192	388	42	106	65	2,763
OCT	0	24	30	92	522	295	10	0	433	132	138	64	0	100	0	589	106	195	271	33	128	55	3,217
NOV	2	17	5	83	374	248	33	0	224	165	117	22	0	83	5	613	75	102	337	30	95	56	2,686
DEC																							
TOTAL	13	192	267	988	4,717	2,281	428	1	3,192	1,902	1,652	391	4	1,256	11	5,709	845	2,243	3,688	424	1,529	600	32,333

## 2018 FORMAL GRIEVANCE REPORT

Month	BENTON	HAWK/M	HAWK/F	WRTS	EARU & MX	GRIMES	RLW	MCWR	MCPH	MSU	NCU	PBU	NWA	TU	TRCC	VSMX	VU	CU	ORCU	Ester	DRU	Bowie Cty	TOTAL
JAN	3	10	13	21	369	102	13	0	148	217	59	20	0	108	0	329	58	122	174	21	80	18	1,885
FEB	3	4	5	25	334	87	17	1	131	195	28	43	0	79	0	290	55	123	160	8	82	18	1,688
MAR	0	4	9	33	394	96	23	0	158	212	87	19	1	50	0	322	66	130	253	16	76	19	1,968
APR	2	5	5	61	402	85	29	0	122	211	59	5	0	94	0	247	89	86	135	12	66	18	1,733
MAY	0	11	8	38	453	82	30	0	159	237	64	13	1	93	0	264	54	102	121	31	62	24	1,847
JUN	0	11	16	42	441	108	16	0	169	208	59	7	0	108	1	270	47	91	121	21	67	10	1,813
JUL	0	8	11	35	440	118	14	0	157	177	86	13	1	84	1	284	55	128	135	28	54	7	1,836
AUG	1	8	1	29	435	142	10	0	229	215	128	15	1	53	1	380	78	171	82	17	86	5	2,087
SEPT	1	5	6	37	397	128	11	0	115	172	65	3	0	100	0	309	65	103	54	17	50	18	1,656
OCT	0	7	8	50	473	154	34	0	205	133	65	15	0	80	0	357	84	92	164	27	71	16	2,035
NOV	0	5	5	26	354	148	9	0	111	153	58	20	0	71	10	343	57	56	163	13	32	16	1,650
DEC																							
TOTAL	10	78	87	397	4,492	1,250	206	1	1,704	2,130	758	173	4	920	13	3,395	708	1,204	1,562	211	726	169	20,198

## INMATE INSTITUTIONAL GRIEVANCE APPEAL REPORT – NOVEMBER 2018

	Acknowledged	Rejected	Processed W/O Merit	Processed W/ Merit
Benton Unit	0	0	0	0
Benton Work Release	0	0	0	0
Bowie County Texas Correctional Facility	7	0	11	0
Cummins Unit	11	4	19	0
Delta Regional Unit	11	1	7	0
East Arkansas Regional Unit	5	1	36	1
East Arkansas Regional Max Unit	86	8	18	0
Ester Unit	3	2	5	0
Grimes Unit	26	6	25	0
Maximum Security Unit	32	5	38	0
McPherson Unit	52	5	52	0
McPherson Mental Health Residential Program Unit	2	1	2	0
Mississippi County Work Release Center	0	0	0	0
Northwest Arkansas Work Release Center	0	0	0	0
North Central Unit	19	6	18	0
Ouachita River Correctional Unit	25	5	33	0
ORCU Hospital	0	0	0	0
ORCU New Commitment	3	1	6	0
ORCU Mental Health Residential Program Unit	1	0	1	0
Pine Bluff Unit	3	0	3	0
Pine Bluff Re-Entry	0	0	0	0
Randall L. Williams Correctional Facility	1	0	2	1
Texarkana Regional Correctional Center	0	0	0	0
Tucker Unit	14	4	9	0
Varner Super Max	89	12	116	3
Varner Unit	13	1	15	0
Wrightsville Unit	7	1	6	0
Hawkins Center	0	0	0	0
Hawkins for Males	1	0	0	0
Hawkins SPU	0	0	0	0
<b>Total</b>	<b>411</b>	<b>63</b>	<b>422</b>	<b>5</b>

## ADMISSIONS AND RELEASES – NOVEMBER 2018

<u>Admissions</u>	<u>Male</u>	<u>Female</u>	<u>Total</u>
Asian	1	0	1
Black	163	12	175
Hispanic	19	3	22
Native American Indian	1	0	1
White	326	77	403
Other	1	0	1
<b>Total</b>	<b>511</b>	<b>92</b>	<b>603</b>

<u>Releases</u>	<u>Male</u>	<u>Female</u>	<u>Total</u>
Asian	2	0	2
Black	244	21	265
Hispanic	18	1	19
Native American Indian	2	2	4
Native Hawaiian or Pacific Isl	2	0	2
White	387	98	485
<b>Total</b>	<b>655</b>	<b>122</b>	<b>777</b>

## ADC INMATE POPULATION GROWTH 2000-2026 - NOVEMBER 2018

Updated 11/30/2018

Mo.	2000	2001	2002	2003	2004	2005	2006	2007	2008	2009	2010	2011	2012	2013	2014	2015	2016	2017	2018
Jan.	11,984	11,908	12,402	13,015	13,105	13,595	13,481	13,839	14,518	14,796	15,334	16,312	15,134	14,815	17,481	18,142	17,785	17,824	18,201
Feb.	12,169	12,022	12,529	13,054	13,166	13,783	13,633	14,012	14,603	14,883	15,374	16,209	14,990	15,008	17,438	18,082	17,625	17,608	17,998
March	12,006	12,033	12,299	13,108	13,088	13,418	13,534	13,772	14,580	14,843	15,290	16,095	14,964	14,665	17,395	18,233	17,573	17,666	18,089
April	12,069	12,167	12,465	13,213	13,323	13,469	13,554	13,851	14,769	14,937	15,570	16,172	15,124	14,850	17,604	18,703	17,815	17,798	18,227
May	12,109	12,384	12,558	13,463	13,556	13,528	13,711	14,146	14,880	15,146	15,694	16,062	15,132	15,074	17,593	18,693	17,769	17,652	17,945
June	12,005	12,108	12,439	13,418	13,389	13,251	13,430	13,915	14,700	15,025	15,564	15,554	14,832	14,825	17,340	18,813	17,973	17,963	17,972
July	12,030	12,190	12,622	13,509	13,528	13,286	13,560	14,082	14,868	15,195	15,807	15,519	14,879	15,379	17,522	18,870	18,130	18,180	18,005
August	12,087	12,371	12,815	13,565	13,632	13,419	13,646	14,224	15,100	15,385	15,829	15,240	14,675	16,103	17,549	18,806	17,919	18,051	17,751
September	11,983	12,289	12,774	13,341	13,516	13,237	13,652	14,217	14,850	15,285	16,025	15,172	14,724	16,412	17,605	18,549	18,026	18,179	17,865
October	12,119	12,348	12,942	13,341	13,584	13,363	13,775	14,349	14,836	15,381	16,311	15,271	14,856	16,993	17,880	18,430	18,127	18,348	17,943
November	12,094	12,408	13,162	13,408	13,706	13,587	13,913	14,437	15,025	15,340	16,460	15,205	14,625	17,168	17,848	17,981	17,573	17,973	17,666
December	11,856	12,333	12,845	13,106	13,470	13,338	13,728	14,315	14,716	15,199	16,204	15,062	14,654	17,235	17,874	17,707	17,537	18,078	
Net Ann. Inc.	29	477	512	261	364	-132	390	587	401	483	1,005	-1,142	-408	2,581	639	-167	-170	541	-412
Avg. Mo. Inc.	2	40	43	22	30	-11	33	49	33	40	84	-95	-34	215	53	-14	-14	45	-37

Population is total jurisdictional count at end of each month. Population at end of month December 1999 was 11,827.

Average monthly population increase for past fifteen years 2003 - 2017 is 29

Average monthly population increase for past ten years Jan. 2008 - Dec 2017 is 31

Average monthly population increase for past five years 2013 - 2017 is 57

Projected at Growth of 29 per Month

	2008	2009	2010	2011	2012	2013	2014	2015	2016	2017	2018	2019	2020	2021	2022	2023	2024	2025	2026
Mo.	Actual	Actual	Actual	Actual	Actual	Actual	Actual	Actual	Actual	Actual	Actual/ Proj.	Proj.	Proj.	Proj.	Proj.	Proj.	Proj.	Proj.	Proj.
January	14,518	14,796	15,334	16,312	15,134	14,815	17,481	18,142	17,785	17,824	18,201	17,724	18,072	18,420	18,768	19,116	19,464	19,812	20,160
February	14,603	14,883	15,374	16,209	14,990	15,008	17,438	18,082	17,625	17,608	17,998	17,753	18,101	18,449	18,797	19,145	19,493	19,841	20,189
March	14,580	14,843	15,290	16,095	14,964	14,665	17,395	18,233	17,573	17,666	18,089	17,782	18,130	18,478	18,826	19,174	19,522	19,870	20,218
April	14,769	14,937	15,570	16,172	15,124	14,850	17,604	18,703	17,815	17,798	18,227	17,811	18,159	18,507	18,855	19,203	19,551	19,899	20,247
May	14,880	15,146	15,694	16,062	15,132	15,074	17,593	18,693	17,769	17,652	17,945	17,840	18,188	18,536	18,884	19,232	19,580	19,928	20,276
June	14,700	15,025	15,564	15,554	14,832	14,825	17,340	18,813	17,973	17,963	17,972	17,869	18,217	18,565	18,913	19,261	19,609	19,957	20,305
July	14,868	15,195	15,807	15,519	14,879	15,379	17,522	18,870	18,130	18,180	18,005	17,898	18,246	18,594	18,942	19,290	19,638	19,986	20,334
August	15,100	15,385	15,829	15,240	14,675	16,103	17,549	18,806	17,919	18,051	17,751	17,927	18,275	18,623	18,971	19,319	19,667	20,015	20,363
September	14,850	15,285	16,025	15,172	14,724	16,412	17,605	18,549	18,026	18,179	17,865	17,956	18,304	18,652	19,000	19,348	19,696	20,044	20,392
October	14,836	15,381	16,311	15,271	14,856	16,993	17,880	18,430	18,127	18,348	17,943	17,985	18,333	18,681	19,029	19,377	19,725	20,073	20,421
November	15,025	15,340	16,460	15,205	14,625	17,168	17,848	17,981	17,573	17,973	17,666	18,014	18,362	18,710	19,058	19,406	19,754	20,102	20,450
December	14,716	15,199	16,204	15,062	14,654	17,235	17,874	17,707	17,537	18,078	17,695	18,043	18,391	18,739	19,087	19,435	19,783	20,131	20,479
Net Ann. Inc.	401	483	1,005	-1,142	-408	2,581	639	-167	-170	541	-383	348	348	348	348	348	348	348	348
Ave. Mo. Inc.	33	40	84	-95	-34	215	53	-14	-14	45	-32	29	29	29	29	29	29	29	29



## MONTHLY POPULATION AVERAGES - NOVEMBER 2018

	11/1	11/2	11/5	11/6	11/7	11/8	11/9	11/12	11/13	11/14	11/15	11/16	11/19	11/20	11/21	11/22	11/23	11/26	11/27	11/28	11/29	11/30	
Unit/Center																							AVG
Benton	345	347	346	350	349	348	348	349	349	346	345	342	341	351	352	350	350	350	332	331	334	336	345
Cummins	1,643	1,641	1,635	1,642	1,642	1,646	1,636	1,640	1,640	1,639	1,642	1,647	1,647	1,647	1,644	1,639	1,638	1,637	1,631	1,629	1,624	1,619	1,639
Delta	617	615	613	612	620	618	624	618	618	621	618	622	611	621	620	620	620	619	604	615	613	613	617
E AR Reg	1,636	1,637	1,632	1,636	1,641	1,639	1,636	1,635	1,635	1,629	1,631	1,645	1,643	1,649	1,648	1,649	1,649	1,649	1,638	1,638	1,650	1,654	1,641
Ester	588	589	589	589	588	587	584	584	584	587	585	585	580	581	588	588	588	586	571	572	579	588	585
Grimes	1,071	1,073	1,074	1,070	1,068	1,067	1,069	1,065	1,065	1,065	1,069	1,064	1,063	1,063	1,067	1,062	1,062	1,062	1,063	1,062	1,064	1,064	1,066
Max Sec	543	543	542	541	540	540	543	543	543	543	543	549	549	551	552	553	553	553	552	552	553	552	547
McPherson	1,004	1,005	1,008	1,005	999	992	994	999	999	995	998	1,002	1,002	1,005	1,002	994	994	994	976	979	975	962	995
MCWRC	136	140	140	140	137	136	136	136	136	136	136	134	143	143	142	142	142	142	130	129	129	133	137
N Central	830	825	816	816	817	825	825	825	825	823	829	827	825	824	826	821	821	821	804	802	799	810	820
NWAWRC	100	100	100	100	100	100	100	100	99	99	100	100	99	100	100	99	99	99	96	96	99	100	99
Ouachita River	1,821	1,785	1,830	1,823	1,823	1,814	1,828	1,835	1,835	1,830	1,817	1,813	1,833	1,832	1,823	1,832	1,832	1,833	1,798	1,763	1,730	1,740	1,812
Randall L Williams	561	562	562	559	557	560	558	559	559	559	560	558	556	558	561	561	561	563	550	553	552	548	558
Pine Bluff	486	488	490	490	490	487	488	489	489	488	487	487	488	488	484	482	482	482	474	473	476	476	485
PB Reentry	54	54	54	54	54	54	54	54	54	54	54	54	54	53	53	53	53	53	52	48	47	47	53
TRCC	124	123	123	123	125	125	125	125	125	125	125	124	124	124	124	124	124	124	124	117	117	117	123
Tucker	973	980	978	984	983	983	981	978	978	977	984	984	988	985	993	988	988	988	975	978	978	975	982
Vamer	1,731	1,732	1,729	1,727	1,726	1,728	1,738	1,738	1,738	1,738	1,738	1,739	1,733	1,726	1,722	1,720	1,720	1,720	1,712	1,718	1,713	1,718	1,727
Wrightsville	1,295	1,291	1,291	1,295	1,299	1,305	1,299	1,300	1,300	1,304	1,303	1,299	1,297	1,293	1,289	1,290	1,290	1,291	1,284	1,287	1,275	1,289	1,294
Total ADC	15,558	15,530	15,552	15,556	15,558	15,554	15,566	15,572	15,571	15,558	15,564	15,575	15,576	15,594	15,590	15,567	15,566	15,566	15,366	15,342	15,307	15,341	15,524
ALETA	19	19	19	19	19	19	19	19	19	19	19	19	19	19	19	19	19	19	19	19	19	19	19
Ar State Police	64	64	64	64	64	64	64	62	62	62	63	63	63	63	62	64	64	64	64	63	63	63	63
Co Jail / M	1,559	1,578	1,560	1,564	1,553	1,543	1,512	1,515	1,515	1,530	1,538	1,544	1,538	1,525	1,525	1,546	1,546	1,546	1,558	1,532	1,507	1,498	1,538
Co Jail / F	75	81	86	90	91	90	90	85	85	88	88	89	95	95	99	111	111	110	92	77	84	80	91
Total Co Jail BK	1,634	1,659	1,646	1,654	1,644	1,633	1,602	1,600	1,600	1,618	1,626	1,633	1,633	1,620	1,624	1,657	1,657	1,656	1,650	1,609	1,591	1,578	1,628
Bowie Co., TX	330	330	330	330	334	335	335	335	335	335	335	333	332	332	332	332	332	332	332	330	330	330	332
309/M	250	250	250	250	249	252	251	250	250	251	251	250	249	249	249	249	249	249	251	250	250	243	250
309/F	73	73	73	73	73	74	74	74	74	74	74	74	74	74	74	74	74	74	74	74	74	69	74
Total Act 309	323	323	323	323	322	326	325	324	324	325	325	324	323	323	323	323	323	323	325	324	324	312	323
Total Non ADC	2,370	2,395	2,382	2,390	2,383	2,377	2,345	2,340	2,340	2,359	2,368	2,372	2,370	2,357	2,360	2,395	2,395	2,394	2,390	2,345	2,327	2,302	2,366
Total	17,928	17,925	17,934	17,946	17,941	17,931	17,911	17,912	17,911	17,917	17,932	17,947	17,946	17,951	17,950	17,962	17,961	17,960	17,756	17,687	17,634	17,643	17,890

## FISCAL YEAR 2019 COUNTY JAIL BACKUP - NOVEMBER 2018

DAY		Jul-18		Aug-18		Sep-18		Oct-18		Nov-18
1	*	1,575		1,618	*	1,646		1,531		1,634
2		1,578		1,624	*	1,646		1,531		1,659
3		1,594		1,631		1,613		1,520	*	1,659
4		1,577	*	1,631		1,613		1,537	*	1,659
5		1,577	*	1,631		1,583		1,535		1,646
6		1,548		1,649		1,567	*	1,535		1,654
7	*	1,548		1,654		1,552	*	1,535		1,644
8	*	1,548		1,652	*	1,552		1,535		1,633
9		1,547		1,642	*	1,552		1,527		1,602
10		1,532		1,665		1,517		1,524	*	1,602
11		1,571	*	1,665		1,508		1,557	*	1,602
12		1,584	*	1,665		1,501		1,578		1,600
13		1,609		1,670		1,503	*	1,578		1,600
14	*	1,609		1,671		1,514	*	1,578		1,618
15	*	1,609		1,660	*	1,514		1,574		1,626
16		1,598		1,676	*	1,514		1,571		1,633
17		1,589		1,681		1,505		1,573	*	1,633
18		1,569	*	1,681		1,496		1,583	*	1,633
19		1,563	*	1,681		1,498		1,606		1,633
20		1,559		1,690		1,511	*	1,606		1,620
21	*	1,559		1,683		1,494	*	1,606		1,624
22	*	1,559		1,677	*	1,494		1,606		1,657
23		1,553		1,685	*	1,494		1,599		1,657
24		1,560		1,701		1,506		1,619	*	1,657
25		1,552	*	1,701		1,524		1,612	*	1,657
26		1,553	*	1,701		1,542		1,634		1,656
27		1,597		1,700		1,527	*	1,634		1,650
28	*	1,597		1,679		1,532	*	1,634		1,609
29	*	1,597		1,669	*	1,532		1,602		1,591
30		1,623		1,657	*	1,532		1,595		1,578
31		1,629		1,646				1,621		
Avg Daily Backup		1,576		1,666		1,536		1,577		1,631

Notes: Totals do not include 309 Contracts in County Jails (maximum of 336)

Fiscal Year Average as of November 30, 2018 - 1,597

Short-Term Revocation Program Fiscal Year Average as of November 30, 2018 - 548

## STTG UNIT COUNTS – NOVEMBER 2018



Arkansas Department of Correction

Unit	Beginning Total	Confirmed	Suspected	In	Out	Paroled	Removed	Ending Total	Total Unit Population	Unit % of STTG's
Benton	86	0	1	11	5	9	0	84	336	25.00%
Cummins	494	0	0	31	18	12	0	495	1,619	30.57%
Delta	144	0	0	29	16	7	0	150	613	24.47%
EARU	584	0	0	7	10	13	0	568	1,654	34.34%
Grimes	372	0	0	27	24	15	0	360	1,064	33.83%
Hawkins	45	0	0	13	2	0	0	56	452	12.39%
Max	252	0	0	12	7	2	0	255	552	46.20%
Mcperson	34	0	0	0	1	3	0	30	962	3.12%
MCWR	41	0	0	4	1	5	0	39	133	29.32%
NCU	219	0	0	36	14	22	0	219	810	27.04%
NWAWR	11	1	0	2	0	2	0	12	100	12.00%
ORCU	418	0	0	48	21	13	0	432	1,583	27.29%
ORCU Intake	58	128	0	0	151	0	0	35	157	22.29%
PB/Ester	238	0	0	39	29	18	0	230	1,111	20.70%
RLW	158	0	0	32	15	13	0	162	548	29.56%
TWR	32	0	0	3	3	3	0	29	117	24.79%
Tucker	285	0	0	25	14	0	0	296	975	30.36%
Varner	709	1	0	88	76	9	0	713	1,718	41.50%
Wrightsville	231	2	0	29	7	5	0	250	837	29.87%
<b>Total</b>	<b>4,411</b>	<b>132</b>	<b>1</b>	<b>436</b>	<b>414</b>	<b>151</b>	<b>0</b>	<b>4,415</b>	<b>15,341</b>	<b>28.78%</b>

**ORCU Intake brought in 128 new STTG members into ADC last Month.**

## STTG DISCIPLINARY REPORT – NOVEMBER 2018



Arkansas Department of Correction

Unit	STTG Incidents	STTG Suspected Incidents	Total Unit Disciplinary	Disciplinary Involving STTG	Percentage
Benton	0	0	9	3	33.33%
Cummins	0	6	220	85	38.64%
Delta	0	0	107	39	36.45%
EARU	0	0	354	168	47.46%
Grimes	0	2	126	54	42.86%
Hawkins	0	0	14	0	0.00%
Max	0	1	99	97	97.98%
Mcpherson	0	0	239	9	3.77%
MCWR	0	0	0	0	0.00%
NCU	2	0	109	45	41.28%
NWAWR	0	0	7	0	0.00%
ORCU	0	0	245	110	44.90%
ORCU Intake	0	0	11	5	45.45%
PB/Ester	0	0	69	18	26.09%
RLW	0	0	31	13	41.94%
TWR	0	0	3	3	100.00%
Tucker	2	2	126	58	46.03%
Varner	0	0	326	217	66.56%
Wrightsville	0	0	56	23	41.07%
<b>Total</b>	<b>4</b>	<b>11</b>	<b>2,151</b>	<b>947</b>	<b>44.03%</b>

## STTG COUNTS BY STTG SET – NOVEMBER 2018



Arkansas Department of Correction

STTG Set	Benton	Cummins	Delta	EARU	Grimes	Hawkins	Max	Mcpherson	MCWR	NCU	NWAWR	ORCU	Intake	PB	RLW	TWR	Tucker	Varner	Wrightsville	Total
Asian	2	1	0	1	2	0	0	0	1	0	0	1	0	2		1	1	0	0	12
Bloods	13	113	14	93	62	12	57	3	6	36	3	95	6	37	25	5	64	138	47	829
Crips	9	66	18	61	42	4	29	5	5	15	1	54	5	31	13	7	38	100	23	526
Folk	5	39	6	57	32	7	36	6	0	12	0	8	0	13	5	1	22	80	19	348
GD	10	121	45	125	85	9	45	3	8	31	3	110	10	47	31	6	69	144	59	961
Mexican	3	14	4	18	14	3	4	2	1	7	2	12	0	8	5	0	7	29	4	137
Motorcycle	0	2	0	2	2	0	3	1	0	1	0	1	0	3	1	0	5	1	1	23
Other	3	12	8	10	10	3	5	1	0	8	0	13	1	12	5	0	9	15	9	124
People	4	17	6	15	15	0	15	3	0	11	0	17	2	17	12	0	5	28	7	174
Unknown	0	2	0	6	12	0	2	0	0	5	0	15	1	0	6	0	1	3	5	58
W/S	20	28	28	53	35	9	9	3	4	45	3	40	2	29	18	6	33	49	26	440
NAE	7	23	4	36	13	2	18	2	5	5	0	20	2	10	17	0	17	35	16	232
WAR	7	45	10	70	21	5	17	1	5	30	0	29	5	12	12	1	16	55	24	365
AC	1	7	3	10	11	2	13	0	1	5	0	12	1	4	9	1	3	28	6	117
AB	0	5	4	11	4	0	2	0	3	8	0	5	0	5	3	1	6	8	4	69
<b>Total</b>	<b>84</b>	<b>495</b>	<b>150</b>	<b>568</b>	<b>360</b>	<b>56</b>	<b>255</b>	<b>30</b>	<b>39</b>	<b>219</b>	<b>12</b>	<b>432</b>	<b>35</b>	<b>230</b>	<b>162</b>	<b>29</b>	<b>296</b>	<b>713</b>	<b>250</b>	<b>4,415</b>

Key:

GD = Gangster Disciples

W/S = White Supremacist

NAE = New Aryan Empire

WAR = White Aryan Resistance

AC = Aryan Circle

AB = Aryan Brotherhood



## ADC INPATIENT AND EMERGENCY ROOM UTILIZATION

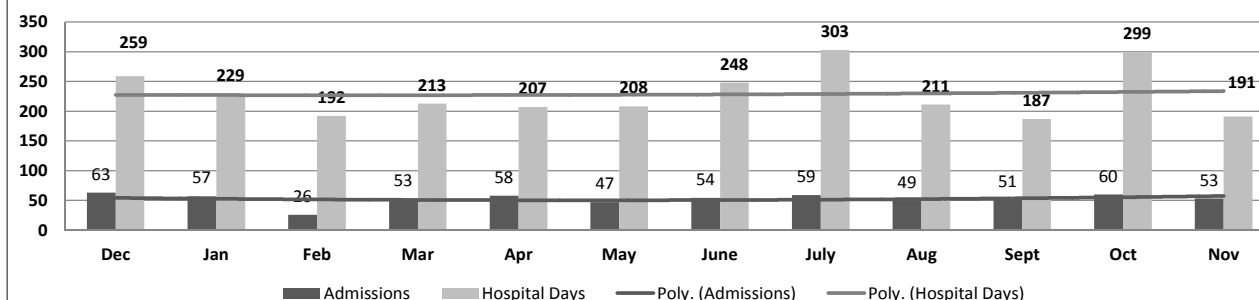
### ADC Inpatient Statistics Past 12 Months

	2017	2018											Average
	Dec	Jan	Feb	Mar	Apr	May	June	July	Aug	Sept	Oct	Nov	
Admissions	63	57	26	53	58	47	54	59	49	51	60	53	52.5
Hospital Days	259	229	192	213	207	208	248	303	211	187	299	191	228.9
Average Length of Stay	5.37	4.76	4.91	6.56	5.22	5.48	5.10	6.21	7.07	6.70	7.65	3.60	4.36

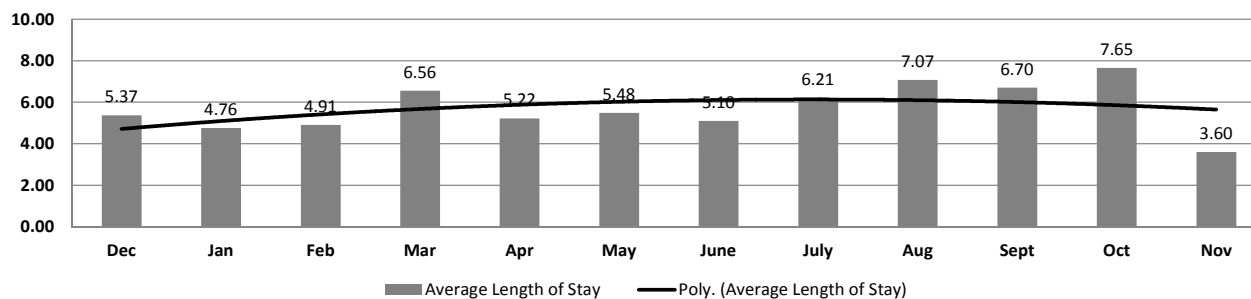
### ADC ER Visits Past 12 Months

	2017	2018											Average
	Dec	Jan	Feb	Mar	Apr	May	June	July	Aug	Sept	Oct	Nov	
Emergency Room Visits	70	105	97	99	94	79	82	117	96	110	95	91	94.6

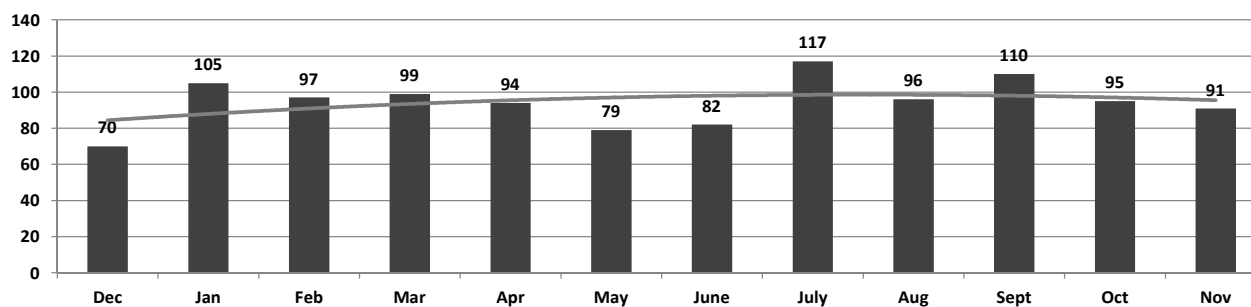
### ADC Inpatient Utilization Past 12 Months



### ADC Inpatient Average Length of Stay Past 12 Months



### ADC Emergency Room Visits Past 12 Months



## MEDICAL GRIEVANCE BOARD REPORT – NOVEMBER 2018

<b>Unit</b>	<b><i>Acknowledged/ Received</i></b>	<b><i>Rejected</i></b>	<b><i>Reviewed &amp; Signed by Dep Director</i></b>	<b><i>With Merit</i></b>	<b><i>With Merit, but Resolved</i></b>	<b><i>% With Merit</i></b>	<b><i>Without Merit</i></b>
<b>Benton</b>	0	0	0	0	0	<b>0%</b>	0
<b>Bowie Co.</b>	2	0	1	1	0	<b>100%</b>	0
<b>CMU</b>	0	0	0	0	0	<b>0%</b>	0
<b>Cummins</b>	8	2	14	1	0	<b>7%</b>	13
<b>Delta</b>	6	1	3	0	0	<b>0%</b>	3
<b>EARU</b>	11	1	9	0	2	<b>22%</b>	7
<b>EARU Max</b>	9	4	28	3	3	<b>21%</b>	22
<b>Ester</b>	3	0	0	0	0	<b>0%</b>	0
<b>Grimes</b>	0	1	7	1	0	<b>14%</b>	6
<b>Hawkins</b>	3	3	0	0	0	<b>0%</b>	0
<b>McPherson</b>	12	2	5	1	0	<b>20%</b>	4
<b>MCWRC</b>	0	0	0	0	0	<b>0%</b>	0
<b>MSU</b>	14	0	15	0	1	<b>7%</b>	14
<b>North Central</b>	5	0	5	0	0	<b>0%</b>	5
<b>NWAWRC</b>	0	0	0	0	0	<b>0%</b>	0
<b>Ouachita</b>	17	3	15	4	0	<b>27%</b>	11
<b>Pine Bluff</b>	0	0	2	1	0	<b>50%</b>	1
<b>Randall Williams</b>	1	0	2	0	0	<b>0%</b>	2
<b>SNN</b>	0	0	0	0	0	<b>0%</b>	0
<b>TRCC</b>	0	0	0	0	0	<b>0%</b>	0
<b>Tucker</b>	9	1	3	0	0	<b>0%</b>	3
<b>Varner</b>	15	8	19	0	0	<b>0%</b>	19
<b>Varner S Max</b>	20	0	22	1	0	<b>5%</b>	21
<b>WRU</b>	2	1	1	0	0	<b>0%</b>	1
<b>WHM</b>	2	0	1	0	0	<b>0%</b>	1
<b>WWR</b>	0	0	0	0	0	<b>0%</b>	0
<b>TOTAL</b>	<b>139</b>	<b>27</b>	<b>152</b>	<b>13</b>	<b>6</b>	<b>13%</b>	<b>133</b>

## CHAPLAINCY

Monthly Report for: November 2018	BENTON	CUMMINS	DELTA REGIONAL	EAST ARKANSAS	EAST ARKANSAS MAX	ESTER	GRIMES	HAWKINS	MAXIMUM	MCPHERSON	NORTH CENTRAL	OUACHITA RIVER	PINE BLUFF	RANDALL L. WILLIAMS	TUCKER	VARNER	VARNER MAX	WRIGHTSVILLE	TOTAL
<b>Services Chaplains Oversaw</b>																			
Christian																			
Population	0	8	9	2	0	3	5	1	6	4	9	4	3	12	6	10	0	6	88
Segregation	0	0	0	0	0	0	0	0	0	0	0	2	0	0	0	0	0	0	2
Muslim																			
Population	0	4	4	3	0	0	5	0	1	4	0	4	3	4	0	5	0	1	38
Segregation	0	0	0	0	0	0	0	0	0	0	0	0	0	0	0	0	0	0	0
	128																		
<b>Volunteers in Charge</b>																			
Protestant	0	19	8	24	0	15	12	18	28	23	0	7	14	7	26	5	0	34	240
Catholic	0	2	0	2	0	1	2	4	1	3	4	4	1	0	1	3	0	4	32
Muslim	0	0	0	2	0	0	0	0	0	0	0	7	1	0	1	0	0	4	15
Other	0	0	0	8	0	0	0	2	8	4	0	20	0	0	0	4	0	2	48
Baptism	0	2	0	6	0	0	0	0	0	0	0	0	0	0	1	0	0	10	19
<b>Marriages</b>																			
	0	0	0	0	0	0	2	0	0	0	2	0	0	0	1	0	0	0	5
<b>Distributed by Chaplains</b>																			
Greeting Cards	0	55	50	0	0	125	86	250	76	826	1200	200	111	16	42	216	158	0	3,411
Bibles, Quran, Torah, Etc.	0	57	30	68	32	40	13	0	6	38	250	500	15	10	15	21	15	5	1,115
Study Course	0	0	14	7	14	35	2	0	12	125	0	165	0	6	0	5	1	0	386
Writing Supplies	0	12	0	0	0	50	8	200	22	6	0	200	0	0	0	0	0	0	498
Literature	0	1,333	575	532	325	525	25	235	375	247	250	500	232	21	3	1,275	79	364	6,896
<b>Chaplain's Visits</b>																			
Barracks	0	70	56	9	0	24	40	10	41	35	47	285	62	46	166	90	0	28	1,009
Approximate Hours Spent in Barracks	0	36	15	2	0	102	14	5	4	30	12	65	8	8	42	33	12	14	402
Inmate Office visits	0	54	72	67	0	62	72	88	21	44	47	50	9	147	255	62	0	35	1,085
Other Office visits	0	14	14	17	0	12	10	12	10	35	12	165	9	38	45	9	0	8	410
Hospital	0	3	0	0	0	2	5	0	2	1	0	22	0	6	0	0	0	0	41
Infirmary/Sick Call	0	6	3	2	0	7	17	4	11	8	4	42	6	4	6	6	0	2	128
Restrictive/Punitive Housing	0	8	6	0	7	0	10	0	41	32	4	49	4	5	3	0	0	4	173
PC - DRU	0	0	3	0	0	0	0	0	0	0	0	0	0	0	0	0	0	0	3
Visitation Days	0	1	1	0	0	0	0	0	0	0	2	3	0	0	0	0	0	1	8
<b>Volunteer Visits</b>																			
RCV	0	0	3	14	0	0	1	26	12	28	0	88	0	0	8	1	0	0	181
OCV	0	14	12	49	0	38	0	7	18	24	3	0	18	24	59	7	0	55	328
Spiritual Advisor	0	2	0	0	0	0	0	1	0	0	0	13	0	1	2	0	0	0	19
CRA	0	21	16	59	8	0	51	58	47	29	75	89	13	68	143	35	6	37	755
<b>Religious Volunteer Hours</b>																			
Volunteer Hours	0	46	93	391	8	184	263	92	75	125	264	327	710	724	468	155	14	184	4,123
DENOMINATIONAL/VOLUNTEER CHAPLAIN HOURS	0	55	0	14	0	156	0	107	8	183	133	140	25	59	151	17	0	46	1,094
	5,217																		
<b>Other Activities of Chaplain</b>																			
Counseled Employees	0	5	9	7	0	9	2	7	1	15	10	80	5	9	6	14	7	5	191
Orientation Sessions	0	4	0	0	0	1	3	0	0	1	0	4	0	0	0	0	0	0	13
Free World Devotions	0	0	1	4	0	8	15	0	1	2	0	12	0	0	0	12	0	0	55
Spoke in Churches	0	12	0	13	0	11	15	0	1	2	1	6	0	0	3	18	0	1	83
Crisis Intervention Sessions	0	14	3	0	0	14	0	5	1	25	4	150	6	19	13	13	3	5	275
Marriage Counseling	0	0	0	3	0	1	2	0	0	2	2	6	0	0	4	0	0	0	20
Denominational Meeting	0	2	0	0	0	3	0	1	1	0	0	1	0	0	0	0	0	0	8
Chaplain's Meeting	0	1	0	1	0	1	4	1	0	1	0	3	1	1	1	7	0	1	23
Volunteer Training Session	0	0	0	0	0	1	0	1	0	0	0	4	0	0	0	0	0	0	6
Choir Trip	0	0	0	0	0	0	0	0	0	0	0	0	0	0	0	0	0	0	0
<b>Chaplain Transfers</b>																			
	0	0	0	0	0	0	0	0	0	0	0	0	0	0	0	0	0	0	0
<b>Chaplain Promotions</b>																			
	0	0	0	0	0	0	0	0	0	0	0	0	0	0	0	0	0	0	0
<b>PAL PROGRAM</b>																			
Enrolled at start of month	0	46	22	50	0	31	46	27	13	56	23	36	0	29	56	50	0	26	511
Enrolled during the month	0	5	9	0	0	0	3	5	0	20	0	4	0	6	8	12	0	6	78
Removed From PAL Program																			
# Paroled	0	0	0	0	0	1	0	0	0	7	0	2	0	1	5	2	0	2	20
# Completed	0	0	0	0	0	0	4	2	2	3	2	2	0	0	0	1	0	2	18
# Withdrew	0	2	0	0	0	0	0	0	3	5	2	0	0	0	1	2	0	1	16
# Removed	0	2	9	0	0	0	1	0	0	3	0	2	0	0	0	4	0	3	24
# Transferred	0	0	1	0	0	0	0	1	0	2	2	0	0	0	2	1	0	1	10
Total Removed from PAL Program	0	4	10	0	0	1	5	3	5	20	6	6	0	1	8	10	0	9	88
Total Enrolled at the End of the Month	0	47	21	50	0	30	44	29	8	56	17	34	0	34	56	52	0	23	501
<b>Volunteers in PAL</b>																			
	0	13	1	11	0	6	23	66	15	39	4	10	0	4	13	0	0	1	206
<b>Special Events:</b>																			
	0	0	0	2	0	2	1	0	2	1	2	0	1	1	1	1	0	0	14

## MONTHLY PURCHASING REPORT – NOVEMBER 2018

PURCHASE ORDERS OVER \$10,000.00					
VENDOR	DESCRIPTION	LOCATION	PO#	PURCHASE AMOUNT	FUND
Beyrl Bitely & Sons Trucking Inc	Hauling Soybeans	Cummins/Farm	4501841853	\$39,000.00	Operational Farm Budget
John W Gasparini Inc	Plumbing Supplies	Varner/Maintenance	4501841824	\$11,410.26	Operational Budget
Randy Kenward R&K Welding & Machine	Crane Rental-Repair Screen Auger	Cummins/Maintenance	4501842059	\$10,578.75	Operational Budget
Mid States Services Inc	Toilet Paper	Wrightsville/Warehouse	4501842431	\$21,964.80	Operational Industry Budget
A C Sales Co	Food Purchases	Central Warehouse	4501843679	\$18,039.00	Operational Budget
William R Hill & Co Inc Doug Waldmann	Food Purchases	Central Warehouse	4501843625	\$13,500.00	Operational Budget
William R Hill & Co Inc Doug Waldmann	Food Purchases	Central Warehouse	4501841030	\$429,028.80	Operational Budget
MJ Kellner	Food Purchases	Central Warehouse	4501839947	\$107,610.00	Operational Budget
Fastenal Co	Monitor Installation Supplies	Construction/Construction	4501842773	\$28,602.73	Telephone Funds
Green & Chapman LLC	Fuel-Diesel	Tucker/Farm	4501837922	\$16,214.94	Operational Farm Budget
Harness Roofing Inc	Roof Repair	North Central/Maintenance	4501842656	\$10,706.30	Operational Budget
Miller Bowie Supply.Com	Chicken & Cow Feed-Oyster Shells	Cummins/Farm	4501842507	\$28,142.40	Operational Farm Budget
Helena Chemical Company	Rice Seed	Cummins/Chemical Shed	4501842892	\$243,200.00	Operational Farm Budget
Carl Baldwin Construction Inc	Sewer Lift Station Repair	EARU/Construction	4501818370	\$15,000.00	Telephone Funds
Athens Paper Co	Paper	Wrightsville/Graphic Arts	4501843386	\$14,394.00	Operational Industry Budget
Mid States Services Inc	Toilet Paper	Wrightsville/Warehouse	4501843774	\$21,964.80	Operational Industry Budget
Helena Chemical Company	Fertilizer for Rice & Soybeans	Tucker/Farm	4501836984	\$84,660.00	Operational Farm Budget
Arkansas Correctional Industries	Janitorial Supplies	Central Warehouse	4501844113	\$136,020.50	Operational Budget
Franklin Miller Inc	Kitchen Grinder	Wrightsville/Maintenance	4501844102	\$20,478.75	Operational Budget
Hazelden Foundation	Resource Library DVDs	Mental Health, SATP	4501844304	\$10,788.42	Medical Monetary Sanction
Galls LLC	Uniform Shirts	Training Academy	4501844508	\$47,133.18	Operational Budget
Wholesale Electric Supply Co Inc	Network Service Equipment	Wrightsville/Information Services	4501844398	\$15,143.88	Telephone Funds
Eds Supply Co Inc	HVAC Unit	Construction/Construction	4501844706	\$10,895.24	Telephone Funds
Miller Bowie Supply.Com	Feed for Calves and Baby Pigs	Cummins/Farm	4501844637	\$18,718.40	Operational Farm Budget
Mid South Sales Inc	Fuel-Unleaded & Diesel	Ouachita	4501837131	\$13,157.20	Operational Budget
National Food Group	Food Purchases	Central Warehouse	4501844916	\$123,481.90	Operational Budget
US Foods	Food Purchases	Central Warehouse	4501844935	\$163,591.68	Operational Budget
Craftmaster Hardware Co Inc	Locks	Tucker	4501844925	\$14,192.40	Operational Budget
Elliott Electric Supply Inc	Network Service Equipment	Admin East/Information Services	4501844981	\$10,023.20	Operational Budget
Helena Chemical Company	Rice Seed	Tucker/Farm	4501844332	\$159,500.00	Operational Farm Budget
Diamond International Trucks Inc	International Tractor Truck	Admin East/Purchasing	4501844114	\$104,450.00	Work Release
Mid States Services Inc	Toilet Paper	Wrightsville/Warehouse	4501845096	\$21,964.80	Operational Industry Budget
Razor Chemical Inc	Janitorial Supplies	Delta/Janitorial Factory	4501845102	\$18,904.80	Operational Industry Budget
Harcross Chemicals Inc	Janitorial Chemicals	Delta/Janitorial Factory	4501845629	\$13,827.55	Operational Industry Budget
Razor Chemical Inc	Janitorial Supplies	Delta/Janitorial Factory	4501845487	\$18,904.80	Operational Industry Budget
Univar USA Inc	Janitorial Chemicals	Delta/Janitorial Factory	4501845771	\$16,708.00	Operational Industry Budget
Johnson Controls Fire Protection	Security Alarm System Maintenance	EARU/Maintenance	4501845660	\$10,313.24	Operational Budget
Bob Barker	Deodorant Soap	Central Warehouse	4501845757	\$25,781.25	Operational Budget
VW Grainger	Batteries, Antennas, Chargers	Emergency Preparedness/Radio Shop	4501844685	\$14,341.89	Telephone Funds
Miller Bowie Supply.Com	Feed to Mix for Livestock	Cummins/Farm	4501846242	\$73,440.00	Operational Farm Budget
Acadian Wood Products Inc	Red Oak Plywood	Wrightsville/Warehouse	4501846087	\$13,188.00	Operational Industry Budget
Axon Enterprises	Taser Handles, Cameras, Holsters	Emergency Prep/Departmental Armor	4501846195	\$18,826.92	Telephone Funds
Arkansas Correctional Industries	Coffee & Tea	Central Warehouse	4501846354	\$20,379.00	Operational Budget
William R Hill & Co Inc Doug Waldmann	Food Purchases	Central Warehouse	4501846401	\$208,694.34	Operational Budget
Sysco Food Services of Arkansas	Food Purchases	Central Warehouse	4501846447	\$87,062.60	Operational Budget
Arkansas Correctional Industries	Clothing, Linens, Mattresses	Delta	4501846494	\$22,095.69	Operational Budget
Bracey Insurance Agency Inc	Crop Insurance-Rice & Corn	Cummins/Farm	4501846706	\$11,282.00	Operational Farm Budget
Pioneer Hi Bred International Inc	Corn & Soybean Seed & Treatment	Cummins/Farm	4501846188	\$655,162.88	Operational Farm Budget
Progressive Tractor & Implement Co	Tractor & Implement Parts	Cummins/Farm Garage	4501841486	\$10,850.00	Operational Farm Budget
Mississippi Ag Company	Combine Engine Overhaul	Cummins/Farm	4501833832	\$23,652.09	Operational Farm Budget
Cedar Creek LLC	Oak Lumber	Wrightsville/Warehouse	4501846916	\$16,200.00	Operational Industry Budget
Arkansas Correctional Industries	Clothing & Linens	Grimes	4501846820	\$28,023.17	Operational Budget
Mid States Services Inc	Toilet Paper	Wrightsville/Warehouse	4501846914	\$20,966.40	Operational Industry Budget
Arkansas Correctional Industries	Boots	Wrightsville	4501847202	\$14,791.14	Operational Budget
		Total for Purchases over \$10,000		\$3,326,952.09	
FIRM CONTRACTS OVER \$25,000.00					
VENDOR	DESCRIPTION	UNIT	Contract # P.O#	PURCHASE AMOUNT	FUND
Mid-Ark Roofing Inc	Roof Replacement	Construction/Construction	4501843902	\$366,180.00	Prison Housing
		Total for Contracts		\$366,180.00	
EMERGENCY PURCHASE ORDERS OVER \$25,000.00					
		Total EM Purchases		\$0.00	
Total Purchases				\$3,693,132.09	

## PERSONNEL REPORT – NOVEMBER 2018

UNIT	AUTHORIZED	FILLED	VACANT	% VACANT	HIRED	VOLUNTARY TERMINATION	INVOLUNTARY TERMINATION	RETIREMENT
BENTON (CR05)	77	76	1	1.30%	1	0	1	0
CENTRAL OFFICE (CR01, CR02, CR08 & CR22)	271	246	25	9.23%	2	3	0	0
509 CHAPL ADMIN	26	25	1	3.85%	0	0	0	0
CONSTRUCTION (CR04)	59	57	2	3.39%	0	0	0	0
CUMMINS (CR09)	427	397	30	7.03%	16	6	6	0
DELTA (CR10)	183	177	6	3.28%	3	1	1	0
EAST ARKANSAS (CR12)	365	326	39	10.68%	8	3	9	1
ESTER (CR11)	156	146	10	6.41%	1	2	0	0
FARM (CR29)	61	52	9	14.75%	0	0	0	0
GRIMES (CR27)	244	224	20	8.20%	7	5	3	0
HAWKINS (CR06)	76	76	0	0.00%	1	0	0	0
INDUSTRY (CR07)	52	41	11	21.15%	0	0	0	0
MAXIMUM SECURITY (CR14)	229	182	47	20.52%	2	7	6	0
MCPHERSON (CR28)	230	218	12	5.22%	8	2	4	0
MENTAL HEALTH	182	150	32	17.58%	2	2	0	0
MISS COUNTY (CR15)	38	33	5	13.16%	0	0	0	0
NORTH CENTRAL (CR16)	197	193	4	2.03%	5	4	0	0
NORTHWEST ARK (CR17)	30	29	1	3.33%	0	0	0	0
OUACHITA RIVER (CR30)	466	425	41	8.80%	12	10	9	2
PINE BLUFF (CR20)	169	166	3	1.78%	9	2	4	1
RANDAL L. WILLIAMS (CR13)	145	136	9	6.21%	2	1	3	1
TEXARKANA (CR21)	31	28	3	9.68%	0	2	0	0
TRANSPORTATION (CR32)	102	96	6	5.88%	0	1	1	0
TUCKER (CR23)	199	175	24	12.06%	7	8	4	0
VARNER (CR24)	358	294	64	17.88%	13	5	3	1
WRIGHTSVILLE (CR25)	207	200	7	3.38%	7	5	1	0
TOTAL	4,580	4,168	412	9.00%	106	69	55	6

Term/Hire report run 12/4/18 - PSR created 12/4/18 for 11/30



## AR-DOC SECURUS VIDEO VISITATION ACTIVITY TRACKER - NOVEMBER 2018

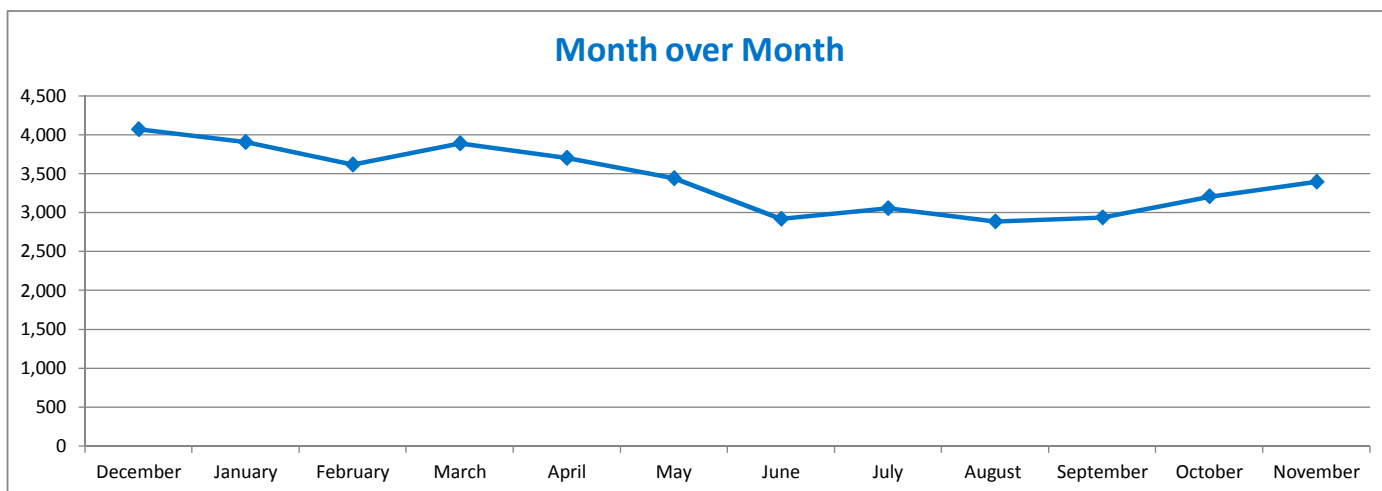
## AR-DOC SVV Activity Tracker

Total ADP: 15,586

Total Visits by Month	December	January	February	March	April	May	June	July	August	September	October	November
Total (Includes SuperMax)	4,071	3,909	3,618	3,890	3,705	3,441	2,923	3,057	2,885	2,939	3,207	3,399
Target Objective	15,586	15,586	15,586	15,586	15,586	15,586	15,586	15,586	15,586	15,586	15,586	15,586

\*Targets determined by vendor.

## Anywhere Visitation Performance:



## Completed Visits

Site	Current Month	Previous Month
Benton	180	204
Cummins	253	205
Delta Regional	170	162
East Arkansas Regional	275	240
Ester	247	232
Grimes	259	262
J Aaron Hawkins Sr.	163	122
Tucker Max	52	37
Mcperson	291	313
Mississippi County WRC	10	11
North Central	187	211
NW Arkansas WRC	9	5
Ouachita River	390	327
Pine Bluff Complex	91	71
Randall L Williams	237	307
State Police Barracks	29	24
Texarkana Regional	47	38
Tucker Unit	74	79
Varner	225	164
Wrightsville Unit	210	193
Pine Bluff Re-Entry	0	0
<b>Total:</b>	<b>3,399</b>	<b>3,207</b>

## Missed by Inmate

Site	Current Month	Previous Month
Benton	7	4
Cummins	18	11
Delta Regional	1	4
East Arkansas Regional	17	8
Ester	3	3
Grimes	9	3
J Aaron Hawkins Sr.	5	3
Tucker Max	2	2
Mcperson	21	14
Mississippi County WRC	1	1
North Central	7	3
NW Arkansas WRC	1	0
Ouachita River	13	20
Pine Bluff Complex	2	5
Randall L Williams	6	7
State Police Barracks	2	0
Texarkana Regional	2	1
Tucker Unit	3	1
Varner	7	19
Wrightsville Unit	6	3
Pine Bluff Re-Entry	0	0
<b>Total:</b>	<b>133</b>	<b>112</b>

## AR-DOC LEASED SECURUS TABLETS - NOVEMBER 2018

FACILITY NAME	LEASED	TOTAL
Benton Unit	47	58
Cummins Unit	194	296
Delta Regional Unit	51	103
East Arkansas Regional Unit	106	210
Ester Unit	39	191
Grimes Unit	87	169
J Aaron Hawkins Sr Center For Women	66	150
McPherson Unit	141	256
Mississippi County Work Release Center	31	42
North Central Unit	79	162
Northwest Arkansas Work Release Center	35	45
Ouachita River Unit	155	279
Pine Bluff Reentry Center	8	10
Pine Bluff Unit	34	47
Randall L. Williams Facility	53	93
State Police Barracks	13	17
Texarkana Regional Correctional Center	14	26
Tucker Maximum Security Unit	59	101
Tucker Unit	99	170
Varner Unit	160	267
Wrightsville Unit	124	187
	<b>1,595</b>	<b>2,879</b>

\*The difference between LEASED and TOTAL tablets reflects the number of program and officer tablets.

## CONSTRUCTION BUDGET / STATUS REPORT - DECEMBER 5, 2018 — [Page 1 of 2]

Fund	Project Description	Total Projected	Budget	Available Funds	\$ % Complete	Construction % Complete	Notes
7004810	Cummins Poultry Houses	\$ 5,939,457	\$ 6,100,000	\$ 160,543	97%	98%	Plans to correct ramp problem by JBP, looking at changing forklifts.
KBR4Q95	ESTER - Phase 3 - General Improvement Fund	2,943,927	4,383,781	1,439,854	67%	98%	Parking Lot in design. Cameras will be installed around perimeter after paving. ADFA bonds turned back on Phases 1 & 2 1A
700483A	EARU ISO Rec Yard	265,735	271,430	5,695	98%	100%	Complete
700483A	Varner ISO Rec Yard	180,277	180,953	676	100%	75%	Rec Pens underway, all parts built
700483A	EARU Max Rec Precast Rec Yard	62,887	659,553	596,666	10%	0%	Plans approved by DBA. Getting revised quote.
700483A	Tucker Max Precast Rec Yard	-	1,210,000	1,210,000	0%	0%	Plans being submitted to DBA
700483A	Cummins Precast Rec Yard	-	927,500	927,500	0%	0%	Plans being submitted to DBA
KBR4Q95	Bullpens	178,845	851,999	673,154	21%	60%	One completed as a demonstration and approved. 22 being completed.
KBR4Q95	13 & 15 Barracks Door Revisions	111,168	174,000	62,832	64%	55%	All doors have been installed in 13 Barracks.
KBR4Q95	Camera's (New)	720,066	1,248,000	527,934	58%	50%	Cameras ordered, installation underway. Delta complete, working at Varner
700485A	Integrity Energy Improvements at EARU & Delta	12,786,477	17,020,204	4,233,727	75%	62%	lights (100%), water (90%), compost (90%), & solar (90%), HVAC started.
700486A	Pine Bluff Unit Barracks 9 Renovation	260,086	437,000	176,914	60%	49%	9D construction complete, going to A, B, & C
KBSCW18	McPherson Administration	30,342.81	395,439	365,096	8%	0%	Architects prepared Plans, DBA approved Plans 11/2/18
KBSBW18	McPherson Visitation	19,705.66	312,430	292,724	6%	0%	
KBSHW18	Tucker Water Treatment	-	1,093,848	1,093,848	0%	0%	submitting for designer approval.
KBSFW18	Max Armory	-	70,000	70,000	0%	0%	to replace existing inadequate Armory.
KBSFW18	Varner Armory	-	68,399	68,399	0%	0%	Plans sent to DBA, comments received.
7004820	Central Office Roof Replacement	398,893.77	500,000	101,106	80%	5%	Started 12/3, demo at night, replace immediately each day.
509	Wrightsville ACI Roof Replacement	249,852.60	255,000	5,147	98%	60%	replacing a very old metal roof

## Telephone Projects

Maintenance & Operations	Fire Alarm Upgrades (All Units)	11,809	53,000	41,191	22%	17%	on-going
	Gas Stations - Canopy (C/O)	0	-	0	0%	97%	Steel structure completed.
	Stainless Steel - Kitchen/Shower/Restrooms - All Units	12,601	20,000	7,399	63%	60%	continual need
	Parking Lot - Gravel and Paving - EARU	0	68,000	68,000	0%	0%	Parking lot complete. Working on paving road to State highway, acquiring R.O.W.
	Gates and Fences all units	740	30,000	29,260	2%	0%	to improve security
	ACA Maintenance	93,578	100,000	6,422	94%	90%	seven Units coming up this fiscal year, 2018
	ADA Projects - All Units	206	1,000	794	21%	0%	as needed.
	Fast Top Floor Systems (kitchen/laundry/showers all units)	22,362	25,000	2,638	89%	0%	projects as requested as needed. ORCU 75% complete, to complete 12/10.
	Camera Equipment - All Units	174,400	175,000	600	100%	60%	cameras as requested/approved.
	Lock/Riot Gates - All Units	81,209	90,500	9,291	90%	70%	on-going.
	AC Units-All Units	61,626	100,000	38,374	62%	55%	repairing & replacing daily.
	<b>Subtotal</b>	<b>\$ 458,532</b>	<b>\$ 662,500</b>	<b>\$ 203,968</b>			



## CONSTRUCTION BUDGET / STATUS REPORT - DECEMBER 5, 2018 — [Page 2 of 2]

Fund	Project Description	Total Projected	Budget	Available Funds	\$ % Complete	Construction % Complete	Notes
FY19 Carry Forward	Metal Ceilings	0	25,000	25,000	0%	0%	Max Barracks 2 complete.
	ORCU Gravel Pit Operations	7,064	35,000	27,936	20%	100%	on-going. Elect upgrades complete, crusher operating.
	Dog Kennel/Horse Stable Malvern	0	48,000	48,000	0%	0%	DBA comments received, responses underway.
	Emergency Generator - All Units	79,048	100,000	20,952	79%	75%	EARU generators installed, waiting on auto transfer switch. Wrightsville Infirmary is next.
	Roof Repairs-Cummins	0	189,700	162,329	14%	0%	Prepared large order for multiple Units. Currently at the Max, 75 skylights left to install, on order. Office of State Procurement secured a State contract to purchase roofing materials.
	Roof Repairs-Cummins Laundry	0				0%	
	Roof Repairs-East Arkansas	0				0%	
	Roof Repairs-Max	25,643				10%	
	Roof Repairs-Tucker	0				0%	
	Roof Repairs-Varner	1,728				0%	
	Roof Repairs-Wrightsville	0				0%	
	Boiler Repair	17,540	100,000	82,460	18%	100%	continually needing repair
	Subtotal	\$ 131,022	\$ 497,700	\$ 366,678			
New Projects	EARU Sewer lift station	72,782	75,000	2,218	97%	100%	Project complete and operating.
	Tucker 4 new filters & one aeration tank	11,567	500,000	488,434	2%	0%	Plans approved by Health Dept. & DBA, preparing bid documents.
	Change media in 7 water filters at Tucker	4,132	6,000	1,869	69%	100%	Filter media changed out in all 7 filters. Bacteriologic tests on Filter 7 passed, all in operation.
	Tucker Barracks 10 covered walkway	0	-	0	0%	0%	Plans being submitted to DBA
	Max manhole	0	-	0	0%	0%	to provide access to a blockage point in sewer
	RLW Sewer relocation 400' + 2 MH	0	34,000	34,000	0%	0%	weekly stoppages, defect in pipe line.
	Additional Metal Fab shop	0	-	0	0%	0%	room to do more metal work
	PB Warehouse Drive replacement	0	95,000	95,000	0%	0%	asphalt drive pot holed
	Subtotal	\$ 88,480	\$ 710,000	\$ 621,520			
Architect Fees		109,185	30,000	-79,185	364%		
Total		\$ 787,220	\$ 1,900,200	\$ 1,112,980			

Notes

Report has not been reconciled against Accountings Reconciled Reports.  
Tolerance/Deviation is with in 1% of Projected Spending.