



PUBLIC RELATIONS

RESEARCH/PLANNING

March 2019 Admissions and Releases – Admissions for March 2019 totaled **827** (737-males & 90-females) while releases totaled **663** (586-males & 77 females) for a net increase in-house of **164** inmates.

Inmate Population Growth/Projection – At the end of March 2019, the jurisdictional population totaled **17,898**, representing a growth of **99** inmates since the first of January 2019. Average growth is **33** inmates, up from an average monthly decrease of **23** inmates per month during calendar year 2018.

Average County Jail Back-up – The backup in the County Jails averaged **1,525** inmates per day during the month of March 2019 – down from an average of **1,621** inmates per day during the month of February 2019. Of the **1,525** average, short-term revocations accounted for **669** (606-males & 63-females) during the month.

SOCIAL MEDIA

Facebook results for March showed a total of eight thousand three hundred fifty-two (8,352) “likes” of our page, an increase of five hundred seventy (570) from the previous month. Our Twitter account currently has 234 followers. During the month, the department released new recruitment and retention videos on social media. Each video has been viewed thousands of times on Facebook.

LEGAL SERVICES

PREA

PREA Hotline Data:

Number of Calls Received	371
Total PREA Issue Calls	19
Total Non-PREA Calls	159
Total Calls Referred to Internal Affairs Division	19
Total Repeat Calls	83
Total Calls with No Message	110
Total Technical Failure Calls	0

Internal Affairs continues to handle all PREA investigations. The ADC PREA Hotline had no technical issues during the month of March. Training for the month included “PREA Audit File Management,” an eight-hour class presented to seven staff members. “PREA Train the Trainer,” a 24-hour class, was also presented to 15 middle and upper-level supervisory staff members. There were 21 test calls conducted

at the units during the month, which are not included in the “number of calls received” data above. The test calls are conducted to verify that the PREA Hotline is working.

INMATE INSTITUTIONAL GRIEVANCES

Inmate Formal/Informal Grievances: During March 2019, a total of one thousand six hundred thirty-seven (1,637) formal grievances and two thousand eight hundred twenty-one (2,821) informal grievances were filed at various units.

Institutional Grievances Appeals: There were a total of five hundred sixty-two (562) appeals of institutional grievances received in March 2019. Four hundred sixty-one (461) were acknowledged and one hundred one (101) were rejected for various reasons. A total of four hundred sixty-three (463) appeals were answered; four hundred fifty-nine (459) had no merit and four (4) were found with merit.

INSTITUTIONS

STTG

During the month of March, the STTG Coordinator taught the BCOT STTG class on the 6th and 27th. K9 officers assisted the STTG Coordinator in BCOT special assignments on the 18th and 19th.

The STTG Coordinator attended security audits of the McPherson Unit on the 14th and the Maximum Security Unit on the 28th.

The first STTG quarterly meeting of 2019 was held at Admin East in Pine Bluff on the 26th.

FARM

The month of March continued to be wet and cold.

Vegetable planting was started in the gardens at all locations, and field prep was begun at all farms.

Milk production has remained consistent.

The poultry division began preparations to depopulate a poultry house and move pullets in April. Calving season is drawing to a close at both locations.

This year’s annual horse auction was once again a success, with several new buyers. Some were purchased to be used as therapy horses, and one retired officer bought the horse he rode during his career with the ADC!

REGIONAL MAINTENANCE HOURS

Regional Maintenance Hours	March 2019
Benton Unit	6,972
Delta Regional Unit	2,128
East Arkansas Regional Unit	1,736
Grimes Unit	3,400
McPherson Unit	1,616
Mississippi County Work Release	776
North Central Unit	7,472
Ouachita River Unit	1,840
Randall L. Williams Unit	3,746
Texarkana Regional Correctional Center	1,136
Tucker Unit	3,512
Varner Unit	2,384
Wrightsville Unit	1,440
Total Hours	38,158

WORK RELEASE RENT REPORT

Unit	March 2019
Benton Unit	\$93,444.00
Mississippi County Work Release	\$50,592.00
Northwest Arkansas Work Release	\$36,091.00
Pine Bluff Work Release	\$26,690.00
Texarkana Regional Correctional Center	\$53,499.00
Wrightsville/Hawkins Work Release	\$25,738.00
Total	\$286,054.00

**RANDALL L. WILLIAMS
JUVENILE EDUCATION PROGRAM**

	Slots	Enrolled	Discharged	End Count
Juveniles*	20	10	0	10

*Juveniles are transferred from the program once they reach the age of eighteen (18). The Juvenile count also changes based on new commitments. During the month, two (2) inmates were on punitive status. There were two (2) new commitments.

REENTRY**WAGE****(Workforce Alliance for Growth in the Economy)**

Unit	Slots	Completed	Discharged	End Count
Delta	9	0	0	9
Ester	20	0	0	11
Hawkins	36	5	5	20
Ouachita River	10	0	1	6
Tucker	20	1	5	17
Wrightsville	36	7	9	25
Total	131	13	20	88

**APAL – ADVANCED PRINCIPLES AND
APPLICATIONS FOR LIFE PROGRAM**

	Slots	Completed*	Enrolled	Removed	End Count
Ester	35	0	34	0	34
Hawkins	64	1	35	3	32
TOTAL	99	1	69	3	66

*Advanced PAL is an 18-month reentry program that combines a pre-release curriculum with the PAL program.

THINK LEGACY

Unit	Slots	Completed	Removed	Assigned
Cummins	55	3	10	50
Delta Regional	24	3	0	23
East Ark. Regional	50	5	1	48
Ester	107	12	0	61
Grimes	56	1	0	49
Hawkins (Female)	40	0	0	43
McPherson	68	9	5	68
North Central	59	7	2	55
Ouachita River	46	5	2	39
Tucker	55	7	2	57
Varner	49	4	0	49
Wrightsville	48	6	1	48
Total	657	62	23	590

THINK LEGACY, *continued*

There are one hundred ninety-one (191) males and one hundred forty-nine (149) females on the Think Legacy waiting list, for a total of three hundred forty (340). All Think Legacy applicants are within eighteen (18) months of their TE or discharge date.

The average time on the waiting list is approximately sixty (60) days. There were 188.75 volunteer hours recorded for the month of March.

David George from the Arkansas Securities Department spoke at the McPherson, North Central, and East Arkansas Units during the month. Goodwill Industries visited the Wrightsville, Ester, North Central, and East Arkansas Units. Carol McDearman, along with Darrius Richmond, from Workforce Alliance visited the Wrightsville, Hawkins, and Delta Units. The McPherson Unit hosted guest speakers from "Society Seven," "Crissie's House," and "In His Wings." Wrightsville visitors during the March included motivational speakers Alijay Spencer and Rose Harris. Shuntrice Hughes from the Office of Child Support Enforcement also visited. Representatives from Child Support Enforcement also visited the Ester and Hawkins Units. Bancorp's Jay Knight visited the North Central Unit. Units that hosted graduations were the Ester, Delta, Grimes, and Wrightsville Units.

**WRIGHTSVILLE-HAWKINS
PATHWAY TO FREEDOM PROGRAM**

	Slots	Completed	Enrolled	Removed	End Count
PTF*	200	2	156	5	199*

*Forty-three (43) graduates remain in the program.

ADMINISTRATIVE SERVICES**BUDGET SECTION UPDATE**

- No Act 715 cases were filed in March.

PROCUREMENT SECTION UPDATE**Current Bids:**

- Waste Disposal Services (various locations)
- Inmate Holiday Package RFP
- Farm Equipment Lease

No New Contracts/OSP**No ABA Contracts****Renewed Contracts/OSP:**

- Uniform Services (various locations)

Procurement/Contracts Report (required by policy)–

For March 2019, Purchase Orders and Contracts in excess of \$10,000 amounted to \$3,058,586.06. Of this amount, \$1,384,976.60 was for Inmate Care and Custody-related items (food, shoes, clothing, etc.). Bulk fuel costs for the month of March were \$69,339.42 – average cost of E-10 was \$2.02/gallon; average cost for bulk diesel was \$2.17/gallon.

HUMAN RESOURCES UPDATE

Workplace Safety – During the month of March, the modified version of the Health and Safety Plan was presented to one (1) Basic Training class with a total of fifty-nine (59) cadets in attendance.

Sixty-five (65) incidents were reported to the Company Nurse in March 2019, bringing the total of reported incidents to one hundred ninety-two (192) for 2019.

Benefits – There were ninety-two (92) FMLA requests processed during the month: eighty-four (84) were approved and eight (8) denied. A total of ten (10) catastrophic leave requests were received: five (5) were approved, two (2) were denied, and three (3) were pending at the time of this report.

Physical Assessments – A total of two hundred five (205) applicants and incumbent personnel were assessed during March. Eighty-three (83) incumbent personnel successfully passed the physical assessment, and two (2) did not. One rescheduled and passed after receiving a physician's release, and one (1) has not rescheduled. One hundred fourteen (114) applicants successfully passed the physical assessment and six (6) did not. Four (4) applicants rescheduled and passed after receiving a physician's release, and two (2) have not rescheduled.

Employment – A total of one thousand eight hundred ninety-three (1,893) applications were received during March. Fifty-two (52) Non-Security applications and eighty-three (83) CO I applications were processed. Fifty-three (53) Correctional Officers were hired, and fifteen (15) Correctional Officers were rehired.

Vacancies, Hires, and Terminations –

There was a total of five hundred (500) security and non-security vacancies, seventy-five (75) new hires, ninety-eight (98) terminations, and two (2) retirements throughout the department during the month of March.

HUMAN RESOURCES UPDATE, *continued*

ADC personnel attended the following Job Fairs/
Recruitment Events in the month of March:

Date	Unit	Location
3/5/19	Tucker	Joe T. Robinson High School/Little Rock
3/7/19	ORCU	Benton High School/Benton
3/7/19	TRCC	TRCC/Texarkana
3/12/19	Grimes	University of Arkansas Community College at Batesville Spring Career Fair/Batesville
3/13/19	Tucker	Premier High School/Little Rock
3/13/19	Varner	Arkansas Workforce Center/Pine Bluff
3/14/19	NWAWRC	University of Arkansas - Fort Smith
3/14/19	Tucker	Little Rock Air Force Base/Jacksonville
3/14/19	Wrightsville	Arkansas Workforce Center/Little Rock
3/15/19	Tucker	Little Rock Job Corps Center
3/20/19	Grimes	Goodwill/Jonesboro
3/20/19	McPherson	Civic Center/McCrory
3/26/19	McPherson	Lawrence Co. Courthouse/Walnut Ridge
3/27/19	Varner	University of Arkansas - Monticello
3/31/19	Tucker	Newbirth Baptist Church/Pine Bluff

Correctional Officer interviews were conducted in the month of March at various units throughout the department:

Date	Unit	Date	Unit	Date	Unit
3/1/19	EARU NCU	3/13/19	Delta	3/21/19	Grimes NCU
3/4/19	McPherson	3/14/19	Cummins Grimes Varner	3/22/19	Max NCU
3/6/19	EARU Ester	3/15/19	MAX McPherson	3/25/19	EARU
3/7/19	EARU	3/18/19	EARU	3/26/19	EARU
3/8/19	Construction McPherson	3/19/19	EARU Grimes McPherson Varner	3/27/19	EARU Grimes
3/11/19	EARU McPherson	3/20/19	EARU Tucker	3/29/19	Cummins
3/12/19	Delta EARU Grimes McPherson NCU				

ADMINISTRATIVE SERVICES DIVISION
MONTHLY REPORTS INCLUDE GIFTS,
GRANTS, DONATIONS / INMATE WELFARE
FUND BALANCE *(required by policy):*

The **Inmate Welfare Fund** balance on March 28, 2019 was \$8,242,011.69.

The **PAWS in Prison Program** total on March 28, 2019 was \$251,358.17. ADC Account (7004822/Donations) balance was \$19,159.55, ADC Account (NDC0500/Recycling) balance was \$103,290.09, and the ADC Paws in Prison Non-Profit account (Quickbooks) balance was \$128,908.53.

INFORMATION TECHNOLOGY -
MARCH 2019

SECURUS VIDEO VISITATION (SVV) PROJECT
SVV Dog Kennel Installation:

- Cummins Unit – Installation is pending the completion of background checks of installers.

Inmate Video Visits:

- Inmates completed three thousand nine hundred five (3,905) video visits during March and missed one hundred forty-three (143).

SECURUS TABLET PROJECT:

- A total of two thousand six hundred fifty-one (2,651) inmate tablets were leased during March.

IT/eOMIS ACTIVITIES

- Varner's behavioral (delivery) video system was reviewed. Charles Bass has begun building a test server for a solution.
- After Cummins reported network slowness for several weeks, troubleshooting efforts identified video sessions to be the cause. Quality of Service (QOS) rules are being added to allocate adequate bandwidth for the equipment. The facility is pending a data circuit upgrade from 20MB to 1GB, which will greatly increase the facility's bandwidth.
- In an effort to reduce paper usage and the cost of printing paper documents, Zac Cosner has been working on the development of digital forms for policies that require signatures.
- Windows 10 operating system upgrades for agency computers continues. Currently, Cummins, Central Office, and Admin East have been completed. Planet Technologies will be on site the week of April 8th – 12th to work with ADC IT staff on automating the upgrade of Windows 7 computers to Windows 10. Initial testing will include twenty-five (25) machines.
- Computers are being replaced, if needed, while Windows 10 upgrades are being made. Computer models older than the Dell 9020 are being replaced with newer models.
- The remaining sites for VOIP telephone installation include the Wrightsville and Hawkins Units. DIS will provide the date the sites are ready for installation.
- Marquis has proposed an enhancement to the eOMIS landing page with dashboards/graphs for staff information. Dashboard displays would display information relative to staff work assignments and be controlled by eOMIS security profiles. Marquis has requested that ADC make dashboard suggestions on what the agency would like to have displayed.
- IT installed LTE routers and computer equipment for the new, remote SOCNA employees.

TRAINING ACADEMY - MARCH 2019

BASIC TRAINING DIVISION –

Under the direction of Instructor Kathleen Lowery, **BCOT Class 2019-B** graduated on March 8th with sixty-two (62) cadets. Kieonna Davis of the Varner Unit received the Willis H. Sargent Award. Adrianna Hernandez of the Ester Unit served as the guest speaker.

Instructor Jason Price's **BCOT Class 2019-C** graduated on March 29th with fifty-five (55) cadets. The Willis H. Sargent Award recipient was Kangel Wells of the Maximum Security Unit. Warden Deangelo Earl of the Ouachita River Correctional Unit was the guest speaker.

IN-SERVICE DIVISION –

Learning 360°: Employee Wellness, was offered on March 4th. This program combines digital media with traditional classroom methods to provide a general understanding of the value of health and wellness and to instill an appreciation of physical fitness and the role that it plays in enhancing work, training, and other activities.

Correctional Security for Non-Security was presented on March 5th, 7th, and 27th. The course highlights a variety of issues of which full-time non-security ADC staff members, new to a correctional setting, should be aware of. Participants are taught correctional history, how to communicate and cooperate with security staff members, and other essential skills. A 16-hour segment is designed for Contract Staff, such as medical staff. An 8-hour class is designed for Volunteers. A 40-hour segment is designed for full-time ADC staff.

Taser Training was offered on March 11th and 14th.

Participants were taught the practical and legal uses of the Taser X-26 electronic device by a department-certified trainer. Certified staff are required to obtain recertification every two years.

Medical Security in a Hospital Environment was offered on March 20th. This class is designed to educate medical security staff and transportation staff on the approved procedures to be used while supervising inmates in a hospital environment.

Blue Courage was offered March 21st and 22nd at the Ouachita River Correctional Unit for security supervisors. This 16-hour course provides the path of constant vigilance through comprehensive training: giving the officer the right inspiration (heart-set), the right reasoning (mind-set), the right skills (skill-set), and the right tools (tool-set). Blue Courage targets physical, mental, and spiritual aspects for officers to pave a clear path forward.

Annual Training Day (Evening Edition) was held March 25th at the Training Academy. The offered sessions provide staff with the convenience of taking their annual mandatory refresher courses at one time. Sessions included:

- ***Ethics/Conduct Standards*** is a class that emphasizes the importance of ethics and conduct standards and the role they play in the continuing development of our moral compass.
- ***Fire and Safety/Chemical Safety/Chemical Right to Know*** is a refresher course designed to remind staff members of their role in fire safety, proper use of chemicals and rights when dealing with chemicals.
- ***Sexual Harassment*** is designed for all ADC staff and addresses the topic of sexual harassment and the right to be free from it in the workplace.
- ***Use of Force*** addresses situations that may occur when staff members are put into positions where force may be necessary. This class addresses the legal issues concerning the use of force.

Oleoresin Capsicum (OC) Instructor Certification was offered on March 25th and 26th. This 16-hour class teaches current “pepper spray” users how to instruct and certify others. Instructor candidates receive both a Level 1 and a Level 3 contamination during the class. Recertification for instructors, in which a Level 3 contamination is administered, is required every three years.

Management Level III, held March 25th–28th, consists of training sessions by members of ADC's management team on topics centering around today's fast-paced correctional environment.

Webinars were offered on various days throughout the month of March. The seminars, which were conducted by the Employee Assistance Program (EAP), included:

- *Resilience in Times of Change*
- *Minimizing Worry to Maximize Your Life*
- *Applying Leadership Basics*
- *Budgeting Basics: The Key to Becoming Financially Healthy*
- *Five Generations in One Workplace*

eCADEMY –

During the month of March 2019, eight hundred four (804) ADC employees completed a total of 13,265 hours of eCADEMY training. Approximately 18% of ADC employees completed at least one course during that timeframe, averaging 2.89 hours per employee. The Computer Lab is open on a daily basis for employees who wish to complete online training through eCademy.

HEALTH/CORRECTIONAL PROGRAMS

CHAPLAINCY SERVICES

Delta Regional Unit – On March 29th, PAL and Think Legacy held a graduation for fifty (50) inmates. Guest speakers included Warden Darryl Golden, Deputy Warden Linda Dykes, and Major Percy Arnold. Four (4) PAL graduates and three (3) Think Legacy graduates made presentations.

East Arkansas Regional Unit – On March 28th, PAL held graduation of fifty-six (56) inmates. A quarterly training meeting for volunteers was also held on the 28th at the chapel.

Ester Unit – On March 22nd, the chapel hosted a Christian Motorcyclists Association revival. Eight (8) volunteers attended and assisted with the services, and a large number of inmates attended the event, which was held on the yard.

Maximum Security Unit – On March 7th and 21st, the new “Called to Ministry” class was held by the unit chaplain. Volunteers from “Gideon’s International” visited as many inmates as possible throughout the barracks and hosted a worship service in the chapel on the 9th. Also on the 9th, twenty (20) inmates graduated from Life Principles Class #3. A meeting of denominational and volunteer chaplains was held at the chapel on the 29th.

McPherson Unit – On March 22nd, a concert by “Love Without End” was held with one hundred twenty-five (125) inmates and one volunteer in attendance. Eight (8) volunteers from “The Storybook Project” assisted one hundred twenty-seven (127) inmates in creating recordings for their children on the 27th.

North Central Unit – On March 7th, a Calvary Bible School choir concert was held at the unit and attended by one hundred one inmates (101) and seventy-eight (78) volunteers. Twenty-two (22) volunteers attended quarterly training at the Calico Rock Cumberland Presbyterian Church on the 30th.

Ouachita River Correctional Unit – On March 14th-17th, the Kairos #24 weekend event was held.

Pine Bluff Unit – On March 22nd and 23rd, the chapel hosted a Christian Motorcyclists Association revival attended by ninety-six (96) inmates and ten (10) volunteers.

Randall L. Williams Unit – The Christian Motorcyclists Association held revival at the unit on March 22nd and 23rd that was attended by fifty-five (55) inmates and fifteen (15) volunteers.

Tucker Unit – Fifteen (15) inmates and two (2) volunteers attended an “Alternative to Violence” seminar facilitated by the unit chaplain on March 15th-17th. On the 28th-31st, Kairos #43 was held at the unit with thirty (30) inmate workers, twenty-four (24) inmate participants and twenty-five (25) volunteers taking part in the event.

Varner Unit – On March 20th, nine (9) volunteers from “Gideon’s International” visited the unit and distributed two hundred fifty (250) bibles.

ACCREDITATION

ACA Internal Audits Completed:

3/4–3/7	Pine Bluff Complex Reaccreditation Audit Mandatory-100%; Non-Mandatory-99.3%
3/11–3/13	NWAWRC Audit Prep
3/14–3/15	NWAWRC File Review
3/18–3/20	Wrightsville File Review
3/26	Benton Unit Visit
3/27	Wrightsville File Review

Classes Taught:

3/22	Deputy Warden Mentor ACA Training (Deputy Warden Kenny Bolden)
3/25	Management Level III (Training Academy)
3/28	BCOT (Training Academy)

VOLUNTEER SERVICES

Total Number of Volunteer Hours for March 2019:

Unit/Program	Hours
Cummins Unit	1
Delta Unit	9
East Arkansas Regional Unit	6
Hawkins Unit	9
McPherson Unit	6
Mississippi County Work Release Center	15
North Central Unit	4
Northwest Arkansas Work Release Center	17.5
Pine Bluff Complex	10.25
Varner Unit	37.75
PAWS	16
Think Legacy	188.75
Religious Services/Chaplaincy	5,884
Total Hours	6,204.25

MENTAL HEALTH SERVICES

Sex Offender Treatment Programs (RSVP/SOFT):

	Slots	Completed	Removed	Clients
RSVP	278	72	10	278
SOFT	30	0	1	8
Total	308	72	11	286

There are seven hundred ninety-one (791) males on the waiting list for RSVP and ten (10) females on the waiting list for SOFT within five (5) years of their TE date. Of those, twenty (20) inmates are mandated by the Parole Board.

The average time on the waiting list from request is between one (1) and two (2) months for those stipulated.

The total on the waiting list, including those not currently within the identified timeframe, is one thousand four hundred twenty-eight (1,428) males and eleven (11) females. There is one (1) PREA inmate in the program at this time.

***The waiting list numbers include inmates that are ineligible due to class or housing status.**

Therapeutic Community (TC):

Unit	Slots	Completed	Removed	Clients
Tucker	136*	10	11	132
Wrightsville	50*	8	1	47
McPherson	53*	3	4	51
Total	239	21	16	230

There are five hundred eighty-eight (588) males and seventeen (17) females on the waiting list within eighteen (18) months of their release date. Of those, eight (8) are mandated by the Parole Board.

The average time on the waiting list from request is twenty-two (22) days.

The total on the waiting list, including those not currently within the identified timeframe, is one thousand thirty-nine (1,039) males and one hundred twenty-three (123) females.

***Denotes transitional beds available at this treatment program. The Tucker Therapeutic Community has one hundred twenty-nine (129) client slots and seven (7) peer counselor slots.**

Substance Abuse Treatment Program (SATP):

Unit	Slots	Completed	Removed	Clients
Grimes	56*	9	1	54
McPherson	106*	24	8	97
Maximum Security	3	1	0	3
Randall L. Williams	200*	38	12	190
Benton	36*	7	1	34
Wrightsville	150*	26	9	147
Total	551	105	31	525

There are one thousand eight hundred thirty-nine (1,839) males and two hundred three (203) females on the waiting list within eighteen (18) months of their release date. Of those, thirty-seven (37) are mandated by the Parole Board.

The average time on the waiting list from request is thirteen (13) days.

The total on the waiting list, including those not currently within the identified timeframe, or ineligible due to class or housing status, is two thousand eight hundred thirty (2,830) males and three hundred twelve (312) females.

***Denotes transitional beds available at this treatment program.**

Substance Use Intervention Program: The Substance Use Intervention Program had sixteen (16) admissions and eleven (11) discharges for an end-of-month count of forty-nine (49). This program is housed at the Varner Unit and is for inmates found guilty of a disciplinary violation for either drug use or drug possession.

ORCU Residential Program Unit (RPU): The RPU at Ouachita had ten (10) admissions and seven (7) discharges in March for an end-of-month count of one hundred twenty-two (122).

McPherson Mental Health Residential Program Unit (RPU): There were nine (9) admissions and six (6) discharges in March, for an end-of-month count of forty (40).

Habilitation Program: The Habilitation Program at the Ouachita River Correctional Unit provided treatment services to forty-five (45) inmates during March. There were no admissions or discharges resulting in an end-of-month count of forty-five (45).

Anger Management Treatment: The Anger Management Treatment Program at the Cummins Unit provided treatment services to forty (40) inmates during March. There were eight (8) admissions and eight (8) discharges for an end-of-month count of thirty-two (32).

MENTAL HEALTH SERVICES, *continued*

Staffing: The following Mental Health Services and SATP positions were vacant in February and March 2019:

Positions	FTE's*	Feb.	Mar.
Psychologists	14	6	6
Social Workers	31	12	12
Advisors	64	10	11
Substance Abuse Program Leaders	35	3	3
Administrative Specialists/Analysts	17	4	3

*FTE refers to authorized Full Time Equivalent positions.

ADDITIONAL MENTAL HEALTH AND MEDICAL INFORMATION**Self-Study Classes:**

Classes	# of Participants	# Completed	Waiting List
Anger Management	372	305	1,006
Thinking Errors	337	310	1,011
Substance Abuse Education	217	192	490
Communication Skills	262	246	994
Domestic Violence	133	124	301
Victims of Domestic Violence	21	21	42
Stress Management	353	317	997
Parenting	243	225	517

Suicide: There were seventy-two (72) suicidal threats during March. There were five (5) attempts resulting in four (4) deaths.

Outpatient: There were two thousand eighty-six (2,086) inmates on the mental health medical log at the beginning of March. Mental Health staff conducted the following contacts during March:

Case Management Contacts	2,141
Requests for Interviews	981
Testing	3
Intakes	845
Unit Requests	1,873
Pre-Lockup Reviews	528
Routine Restrictive Housing Reviews	772
Restrictive Housing Rounds	21,378
PREA Evaluations	128
Routine Follow-up	175
834 Requests	37

County Mental Health Requests: During March, there were one hundred twenty-one (121) requests of a mental health nature received. Thirty-nine (39) inmates were fast-tracked to ADC.

County Medical Health Requests: During March, there were four hundred eighty-nine (489) requests of a medical nature received. Seventeen (17) inmates were fast-tracked to ADC.

Monetary Sanctions: Sanction reimbursements for February were \$17,950.00.

Deaths: There were fifteen (15) inmate deaths during the month of March; nine (9) were claimed and six (6) were cremated.

CCS: See attachment for CCS's report regarding outside beds and emergency room visits.

Medical Grievances: In March, there were one hundred sixty-nine (169) appeals of medical grievances received and one hundred thirty-seven (137) appeals were answered; twelve (12) of those were found to be with merit and three (3) with merit but resolved.

SEX OFFENDER ASSESSMENT**Assessments Completed:**

Risk Level	March	September 1999 through March 2019
Level 1	1	1,188
Level 2	16	7,488
Level 3	11	6,812
Level 4	3	655
Default 3	2	*
Total	33	16,143
*Default Level 3's are included in the total number of Level 3's to date.		

ACIC Numbers:

The total number of sex offenders registered from September 1999 through March 2019:

Compliant	8,205
Delinquent	1,019
Confined	3,250
Out-of-State	3,508
Address Unknown	157
Deported	199
Incapacitated	83
Out of USA	9
Total	16,430

Due to a change in Arkansas law, deceased offenders no longer remain on the registry.

PAWS IN PRISON**Currently Enrolled in Training:**

Maximum Security Unit	6
Tucker Unit	6
Hawkins Unit	5
Randall L. Williams Unit	3
Ouachita River Unit	6
North Central Unit	9
Total	35

Completed Training:

March 2019	17
YTD 2019	52
Since Inception (December 2011)	1,293
Volunteer Hours	18

CONSTRUCTION/MAINTENANCE**PROJECT UPDATES****CENTRAL OFFICE**

Roof Replacement: As of April 1st, there has been substantial completion of the roof replacement project, which began on December 3, 2018. Minor leaks are being tracked and repaired.

CUMMINS UNIT

13 & 15 Barracks Door Revisions: Projects in Barracks 13 to change the doors to solid doors and the bullpen at the entrance, have been completed. Estimates to change metal desks in Barracks 13 to concrete are being prepared. New locks for the bullpens have been ordered.

Poultry House: The generators are being tested weekly. A meeting was held with the architect to discuss making changes to the loading ramp for coolers at the chicken houses. While rear-wheel forklifts are able to get up the ramp, so far they have proven to be too large to operate in the cooler. A request has been made to the Agricultural Division to look into purchasing a second forklift that's the same size as the existing one, but is front-wheel drive.

Precast Recreation Yard: A contract was awarded to WD&D Architects to design precast recreation yards. WD&D is working on plans to submit to DBA.

DELTA UNIT

Cameras: Interior installation of camera equipment has been completed.

Entergy Energy Improvements: Entergy is 100% complete with lighting and plumbing upgrades. The compost shed was completed, equipment was installed, wood pellets were delivered, and staff were trained. HVAC upgrades are 100% complete with testing and balancing is nearing completion. Mechanical system replacement and boiler installation have been completed.

EAST ARKANSAS REGIONAL UNIT (EARU)

Bull Pens: Materials for construction of bull pens are being purchased.

Entergy Energy Improvements: Entergy is 100% complete with lighting and plumbing upgrades, compost equipment installation, and the solar array has been installed and is operational. Wood pellets have been delivered and staff were trained on compost operation. A contract with Entergy for providing electric service to new solar system was approved and returned to Entergy. Work on the HVAC upgrades is 95% complete. Boilers are being replaced, and two air handlers in Isolation were completed in March.

Isolation Recreation Yards: The isolation recreation yards have been completed.

Max Precast Recreation Yard: The architect submitted plans for the precast recreation yards to DBA, who issued approval to proceed. The plans were revised to include a walkway for officers. Work with a vendor on pricing for the precast walls was done. An updated detailed budget estimate, and documents to bid the project, have been prepared.

ESTER UNIT

Phase 3: The parking lot is in the design phase. DBA has concerns with the parking lot being in the floodway. The existing stream banks will need to be modified so that they do not change flow during floods. Exterior lighting and cameras will be installed following completion of the parking lot being paved.

MAXIMUM SECURITY UNIT

Armory: The Varner armory plans have been approved and are being modified for use as the Maximum Security Unit armory plans.

Cameras: The installation of upgraded camera equipment is underway.

Precast Recreation Yard: The design for pre-cast recreation yards is currently underway by WD&D Architects, who was awarded the contract.

MCPHERSON UNIT

Expansion of Administration and Visitation Areas: Plans to increase the size of the McPherson Unit's administration and visitation areas (similar to those at the Grimes Unit) were

prepared by the architect and have been approved by DBA. Bid documents are being prepared. Construction supervisors are onsite and are ordering materials for the project.

PINE BLUFF UNIT

Barracks 9 Renovations: The construction in Barracks 9A, 9B, 9C and 9D is complete. Full-height concrete block walls have been added to the inside of exterior walls to increase security of the walls. Lighting has been replaced and stainless steel was added to the shower areas.

Barracks 10 Renovations: One additional sink and toilet fixture were added to the Barracks 10 restroom, which completes the renovation of the former Central Records Building into Barracks 10.

TUCKER UNIT

Camera: The installation of upgraded camera equipment is underway.

Water Treatment: Funding in the amount of \$1,093,848 was received from the Governor's Office, which covers 1/3 of the cost of total renovation of the water plant. Documents for the selection of a design firm are being prepared.

VARNER UNIT

Armory: Plans for the armory that were submitted to the Department of Health and the State Fire Marshal have received approval. Plans were re-submitted to DBA and have been approved and released for construction.

Bull Pens: All bull pens for the Varner Unit open barracks have been completed and are ready for use.

Cameras: Interior installation of camera equipment has been completed.

Isolation Recreation Yards: Isolation 1 recreation yard construction has been completed. Four of the pens in Isolation 4 are complete and being used, with the remainder still under construction. Rain has hampered the ability to move the panels to the recreation yards.

WRIGHTSVILLE

ACI (Industry) Roof Replacement: The contract for a new metal roof was bid out, awarded and roof replacement is 100% complete. The replacement of interior and exterior lighting has also been completed.

CONSTRUCTION/MAINTENANCE PERSONNEL UPDATE

The following Construction/Maintenance position(s) were vacant at the end of March 2019:

- 4 Construction Project Specialists (Statewide)

AGENCY HIGHLIGHTS

ADC MENTAL HEALTH SERVICES:

Mental Health Services Representatives Attend UALR Recruitment Event

Shuvonne Johnson from the Wrightsville Unit and Reginald Pace from the Ouachita River Correctional Unit attended the Career and Internship Fair held at the University of Arkansas at Little Rock on March 5, 2019. The community outreach event was a big success with the two representing the Arkansas Department of Correction's Mental Health Services, along with many other mental health facilities from across the state, recruiting social workers.



CUMMINS UNIT:

Unit Employees Donate Blood

Staff members at the Cummins Unit donated blood to the Arkansas Blood Institute on March 6, 2019. The Unit's goal was to donate at least 15 pints, however Human Resource Manager Tabitha Whaley's challenged staff to exceed that amount and staff donated a total of 20 pints of blood.



Waiting for their turn to give blood were Jerry Moore, Mental Health; Thomas Burnett, Recreational Supervisor; and Ashlan Endsley, Infirmary.



Cummins Field Security Sgt. A. Thomas was all smiles as he donated blood!

GRIMES UNIT:

Beebe High School Class Visits Grimes Unit

A business law class from Beebe High School toured the Grimes Unit on Monday, March 25, 2019. The students were very inquisitive and staff enjoyed sharing with them what they do each day in their line of work.

The Grimes Unit is appreciative of the Beebe School District for allowing their students this opportunity to showcase the corrections profession in an effort to help educate the next generation of citizens and correctional professionals!



OUACHITA RIVER CORRECTIONAL UNIT:

ORCU Meeting Discusses Sadness and Grief

During a season marked by several ORCU staff members dealing with the sadness and grief of losing a loved one, the March 18th Monday morning management team meeting was closed out with a prayer.



RANDALL L. WILLIAMS UNIT:

Christian Motorcyclists Association Visit

Members of the Christian Motorcyclists Association visited inmates at the RLW Unit on March 22, 2019!



Pictured here are Mark Madison, Jacqueline Blanchard (CRA-WVU), Robert Blanchard (CRA-WVU), Jerry Ingram (CRA-CU), Sid West, Lloyd Bodkins, and Sammie West.

2019 INFORMAL GRIEVANCE REPORT

Month	BENTON	HAWK/M	HAWK/F	WRTS	EARU & MX	GRIMES	RLW	MCWR	MCPH	MSU	NCU	PBU	NWA	TU	TRCC	VSMX	VU	CU	ORCU	Ester	DRU	Bowie Cty	TOTAL
JAN	1	25	25	85	362	310	28	0	448	175	118	33	0	139	1	470	72	151	228	24	132	57	2,884
FEB	0	15	27	80	341	284	17	0	267	147	148	30	0	107	0	450	54	149	406	20	96	39	2,677
MAR	3	15	30	96	305	254	26	0	309	155	171	52	0	125	0	517	72	201	339	27	80	44	2,821
APR	0	0	0	0	0	0	0	0	0	0	0	0	0	0	0	0	0	0	0	0	0	0	0
MAY	0	0	0	0	0	0	0	0	0	0	0	0	0	0	0	0	0	0	0	0	0	0	0
JUN	0	0	0	0	0	0	0	0	0	0	0	0	0	0	0	0	0	0	0	0	0	0	0
JUL	0	0	0	0	0	0	0	0	0	0	0	0	0	0	0	0	0	0	0	0	0	0	0
AUG	0	0	0	0	0	0	0	0	0	0	0	0	0	0	0	0	0	0	0	0	0	0	0
SEPT	0	0	0	0	0	0	0	0	0	0	0	0	0	0	0	0	0	0	0	0	0	0	0
OCT	0	0	0	0	0	0	0	0	0	0	0	0	0	0	0	0	0	0	0	0	0	0	0
NOV	0	0	0	0	0	0	0	0	0	0	0	0	0	0	0	0	0	0	0	0	0	0	0
DEC	0	0	0	0	0	0	0	0	0	0	0	0	0	0	0	0	0	0	0	0	0	0	0
TOTAL	4	55	82	261	1,008	848	71	0	1,024	477	437	115	0	371	1	1,437	198	501	973	71	308	140	8,382

2019 FORMAL GRIEVANCE REPORT

Month	BENTON	HAWK/M	HAWK/F	WRTS	EARU & MX	GRIMES	RLW	MCWR	MCPH	MSU	NCU	PBU	NWA	TU	TRCC	VSMX	VU	CU	ORCU	Ester	DRU	Bowie Cty	TOTAL
JAN	0	14	8	37	335	152	16	0	171	128	70	13	0	117	0	289	55	106	155	12	73	21	1,772
FEB	0	4	5	56	334	134	9	0	104	185	78	15	0	81	0	255	46	115	161	8	57	8	1,655
MAR	3	9	4	40	332	121	12	0	115	111	102	15	0	125	0	310	5	144	113	25	37	14	1,637
APR	0	0	0	0	0	0	0	0	0	0	0	0	0	0	0	0	0	0	0	0	0	0	0
MAY	0	0	0	0	0	0	0	0	0	0	0	0	0	0	0	0	0	0	0	0	0	0	0
JUN	0	0	0	0	0	0	0	0	0	0	0	0	0	0	0	0	0	0	0	0	0	0	0
JUL	0	0	0	0	0	0	0	0	0	0	0	0	0	0	0	0	0	0	0	0	0	0	0
AUG	0	0	0	0	0	0	0	0	0	0	0	0	0	0	0	0	0	0	0	0	0	0	0
SEPT	0	0	0	0	0	0	0	0	0	0	0	0	0	0	0	0	0	0	0	0	0	0	0
OCT	0	0	0	0	0	0	0	0	0	0	0	0	0	0	0	0	0	0	0	0	0	0	0
NOV	0	0	0	0	0	0	0	0	0	0	0	0	0	0	0	0	0	0	0	0	0	0	0
DEC	0	0	0	0	0	0	0	0	0	0	0	0	0	0	0	0	0	0	0	0	0	0	0
TOTAL	3	27	17	133	1,001	407	37	0	390	424	250	43	0	323	0	854	106	365	429	45	167	43	5,064

INMATE INSTITUTIONAL GRIEVANCE APPEAL REPORT – MARCH 2019

	Acknowledged	Rejected	Processed W/O Merit	Processed W/ Merit
Benton Unit	0	0	0	0
Benton Work Release	0	0	0	0
Bowie County Texas Correctional Facility	3	3	7	0
Cummins Unit	25	3	25	0
Cummins Modular Unit	0	0	0	0
Delta Regional Unit	17	2	25	0
East Arkansas Regional Unit	4	2	27	0
East Arkansas Regional Max Unit	102	9	75	0
Ester Unit	10	1	10	0
Grimes Unit	44	7	34	0
Maximum Security Unit	64	18	53	1
McPherson Unit	20	11	16	0
McPherson Mental Health Residential Program Unit	3	0	2	0
Mississippi County Work Release Center	0	0	0	0
Northwest Arkansas Work Release Center	0	0	0	0
North Central Unit	27	11	17	0
Ouachita River Correctional Unit	27	10	41	2
ORCU Hospital	0	0	0	0
ORCU New Commitment	3	0	0	0
ORCU Mental Health Residential Program Unit	0	0	3	0
Pine Bluff Unit	4	1	5	0
Pine Bluff Re-Entry	0	0	0	0
Randall L. Williams Correctional Facility	2	1	3	0
Texarkana Regional Correctional Center	0	0	0	0
Tucker Unit	10	5	15	0
Varner Super Max	84	10	84	1
Varner Unit	6	0	8	0
Wrightsville Unit	5	6	6	0
Hawkins Center	0	0	0	0
Hawkins for Males	1	1	3	0
Hawkins SPU	0	0	0	0
Total	461	101	459	4

ADMISSIONS AND RELEASES – MARCH 2019

<u>Admissions</u>	<u>Male</u>	<u>Female</u>	<u>Total</u>
Asian	1	0	1
Black	254	10	264
Hispanic	29	1	30
Native American Indian	1	0	1
Native Hawaiian or Pacific Isl.	1	0	1
White	447	79	526
Other	2	0	2
Unknown	2	0	2
Total	737	90	827

<u>Releases</u>	<u>Male</u>	<u>Female</u>	<u>Total</u>
Asian	3	0	3
Black	204	12	216
Hispanic	26	2	28
Native American Indian	0	0	0
Native Hawaiian or Pacific Isl.	0	0	0
White	352	63	415
Other	1	0	1
Unknown	0	0	0
Total	586	77	663

ADC INMATE POPULATION GROWTH 2000-2026 - MARCH 2019

Updated 03/31/2019

Mo.	2000	2001	2002	2003	2004	2005	2006	2007	2008	2009	2010	2011	2012	2013	2014	2015	2016	2017	2018	2019
Jan.	11,984	11,908	12,402	13,015	13,105	13,595	13,481	13,839	14,518	14,796	15,334	16,312	15,134	14,815	17,481	18,142	17,785	17,824	18,201	17,958
Feb.	12,169	12,022	12,529	13,054	13,166	13,783	13,633	14,012	14,603	14,883	15,374	16,209	14,990	15,008	17,438	18,082	17,625	17,608	17,998	17,846
March	12,006	12,033	12,299	13,108	13,088	13,418	13,534	13,772	14,580	14,843	15,290	16,095	14,964	14,665	17,395	18,233	17,573	17,666	18,089	17,898
April	12,069	12,167	12,465	13,213	13,323	13,469	13,554	13,851	14,769	14,937	15,570	16,172	15,124	14,850	17,604	18,703	17,815	17,798	18,227	
May	12,109	12,384	12,558	13,463	13,556	13,528	13,711	14,146	14,880	15,146	15,694	16,062	15,132	15,074	17,593	18,693	17,769	17,652	17,945	
June	12,005	12,108	12,439	13,418	13,389	13,251	13,430	13,915	14,700	15,025	15,564	15,554	14,832	14,825	17,340	18,813	17,973	17,963	17,972	
July	12,030	12,190	12,622	13,509	13,528	13,286	13,560	14,082	14,868	15,195	15,807	15,519	14,879	15,379	17,522	18,870	18,130	18,180	18,005	
August	12,087	12,371	12,815	13,565	13,632	13,419	13,646	14,224	15,100	15,385	15,829	15,240	14,675	16,103	17,549	18,806	17,919	18,051	17,751	
September	11,983	12,289	12,774	13,341	13,516	13,237	13,652	14,217	14,850	15,285	16,025	15,172	14,724	16,412	17,605	18,549	18,026	18,179	17,865	
October	12,119	12,348	12,942	13,341	13,584	13,363	13,775	14,349	14,836	15,381	16,311	15,271	14,856	16,993	17,880	18,430	18,127	18,348	17,943	
November	12,094	12,408	13,162	13,408	13,706	13,587	13,913	14,437	15,025	15,340	16,460	15,205	14,625	17,168	17,848	17,981	17,573	17,973	17,666	
December	11,856	12,333	12,845	13,106	13,470	13,338	13,728	14,315	14,716	15,199	16,204	15,062	14,654	17,235	17,874	17,707	17,537	18,078	17,799	
Net Ann. Inc.	29	477	512	261	364	-132	390	587	401	483	1,005	-1,142	-408	2,581	639	-167	-170	541	-279	99
Avg. Mo. Inc.	2	40	43	22	30	-11	33	49	33	40	84	-95	-34	215	53	-14	-14	45	-23	33

Population is total jurisdictional count at end of each month. Population at end of month December 1999 was 11,827.

Average monthly population increase for past fifteen years 2004 - 2018 is 26

Average monthly population increase for past ten years Jan. 2009 - Dec 2018 is 26

Average monthly population increase for past five years 2014 - 2018 is 9

Projected at Growth of 26 per Month

	2008	2009	2010	2011	2012	2013	2014	2015	2016	2017	2018	2019	2020	2021	2022	2023	2024	2025	2026
Mo.	Actual	Actual	Actual	Actual	Actual	Actual	Actual	Actual	Actual	Actual	Actual	Actual/ Proj.	Proj.	Proj.	Proj.	Proj.	Proj.	Proj.	Proj.
January	14,518	14,796	15,334	16,312	15,134	14,815	17,481	18,142	17,785	17,824	18,201	17,958	18,158	18,470	18,782	19,094	19,406	19,718	20,030
February	14,603	14,883	15,374	16,209	14,990	15,008	17,438	18,082	17,625	17,608	17,998	17,846	18,184	18,496	18,808	19,120	19,432	19,744	20,056
March	14,580	14,843	15,290	16,095	14,964	14,665	17,395	18,233	17,573	17,666	18,089	17,898	18,210	18,522	18,834	19,146	19,458	19,770	20,082
April	14,769	14,937	15,570	16,172	15,124	14,850	17,604	18,703	17,815	17,798	18,227	17,924	18,236	18,548	18,860	19,172	19,484	19,796	20,108
May	14,880	15,146	15,694	16,062	15,132	15,074	17,593	18,693	17,769	17,652	17,945	17,950	18,262	18,574	18,886	19,198	19,510	19,822	20,134
June	14,700	15,025	15,564	15,554	14,832	14,825	17,340	18,813	17,973	17,963	17,972	17,976	18,288	18,600	18,912	19,224	19,536	19,848	20,160
July	14,868	15,195	15,807	15,519	14,879	15,379	17,522	18,870	18,130	18,180	18,005	18,002	18,314	18,626	18,938	19,250	19,562	19,874	20,186
August	15,100	15,385	15,829	15,240	14,675	16,103	17,549	18,806	17,919	18,051	17,751	18,028	18,340	18,652	18,964	19,276	19,588	19,900	20,212
September	14,850	15,285	16,025	15,172	14,724	16,412	17,605	18,549	18,026	18,179	17,865	18,054	18,366	18,678	18,990	19,302	19,614	19,926	20,238
October	14,836	15,381	16,311	15,271	14,856	16,993	17,880	18,430	18,127	18,348	17,943	18,080	18,392	18,704	19,016	19,328	19,640	19,952	20,264
November	15,025	15,340	16,460	15,205	14,625	17,168	17,848	17,981	17,573	17,973	17,666	18,106	18,418	18,730	19,042	19,354	19,666	19,978	20,290
December	14,716	15,199	16,204	15,062	14,654	17,235	17,874	17,707	17,537	18,078	17,799	18,132	18,444	18,756	19,068	19,380	19,692	20,004	20,316
Net Ann. Inc.	401	483	1,005	-1,142	-408	2,581	639	-167	-170	541	-279	333	312	312	312	312	312	312	312
Ave. Mo. Inc.	33	40	84	-95	-34	215	53	-14	-14	45	-23	28	26	26	26	26	26	26	26

MONTHLY POPULATION AVERAGES - MARCH 2019

Unit/Center	3/1	3/4	3/5	3/6	3/7	3/8	3/11	3/12	3/13	3/14	3/15	3/18	3/19	3/20	3/21	3/22	3/25	3/26	3/27	3/28	3/29	AVG
Benton	334	330	341	342	338	338	337	336	335	333	334	336	346	346	344	342	339	339	341	340	347	339
Cummins	1,666	1,662	1,660	1,656	1,649	1,651	1,646	1,649	1,658	1,659	1,662	1,659	1,658	1,658	1,660	1,662	1,661	1,660	1,656	1,652	1,654	1,657
Delta	617	618	617	628	619	626	621	625	621	620	620	617	618	615	611	620	615	612	623	621	617	619
E AR Reg	1,660	1,670	1,671	1,659	1,654	1,662	1,677	1,683	1,681	1,689	1,686	1,687	1,685	1,674	1,664	1,671	1,665	1,657	1,651	1,667	1,675	1,671
Ester	563	560	567	578	576	574	571	581	584	581	578	583	583	584	572	571	571	571	577	580	580	575
Grimes	1,059	1,048	1,057	1,051	1,072	1,072	1,066	1,065	1,065	1,065	1,067	1,062	1,057	1,061	1,070	1,061	1,065	1,065	1,063	1,062	1,058	1,062
Max Sec	554	554	554	551	551	549	551	552	553	553	553	555	555	555	556	553	558	558	560	560	560	555
McPherson	987	996	1,002	1,002	1,004	995	991	995	995	992	993	996	998	1,001	993	993	995	996	998	997	1,000	996
MCWRC	125	125	125	125	125	130	130	130	129	129	129	135	135	135	135	135	133	132	132	131	131	130
N Central	826	822	834	830	835	824	826	837	835	833	832	828	823	827	834	829	829	827	820	819	816	828
NWAWRC	96	97	100	97	100	100	100	100	99	100	100	100	100	100	100	100	100	100	100	100	100	99
Ouachita River	1,808	1,880	1,827	1,839	1,840	1,853	1,842	1,826	1,835	1,830	1,823	1,807	1,816	1,838	1,837	1,839	1,837	1,848	1,848	1,852	1,860	1,837
Randall L Williams	552	558	559	558	557	560	565	560	558	555	553	557	556	559	558	549	541	541	554	552	558	555
Pine Bluff	476	473	473	474	476	477	475	475	479	479	474	475	475	476	475	474	478	480	482	484	486	477
PB Reentry	54	54	54	54	54	54	54	54	53	54	54	54	54	53	54	54	54	54	54	54	54	54
TRCC	124	124	124	124	124	124	123	123	126	126	126	125	125	127	127	127	127	127	127	128	128	126
Tucker	986	989	985	979	986	978	972	986	995	998	997	996	1,000	1,000	1,001	992	1,002	1,000	995	996	992	992
Varner	1,722	1,717	1,720	1,723	1,721	1,716	1,715	1,718	1,724	1,727	1,725	1,720	1,720	1,719	1,728	1,726	1,729	1,727	1,734	1,731	1,731	1,723
Wrightsville	1,302	1,300	1,307	1,304	1,299	1,299	1,291	1,299	1,299	1,298	1,296	1,301	1,295	1,293	1,288	1,289	1,297	1,302	1,297	1,300	1,295	1,298
Total ADC	15,511	15,577	15,577	15,574	15,580	15,582	15,553	15,594	15,624	15,621	15,602	15,593	15,599	15,621	15,607	15,587	15,596	15,596	15,612	15,626	15,642	15,594
ALETA	18	18	18	18	18	18	18	18	18	18	18	18	18	18	18	18	18	18	18	18	18	18
Ar State Police	64	64	64	64	64	62	62	62	62	62	62	61	61	61	63	63	62	62	62	62	62	62
Co Jail / M	1,478	1,389	1,432	1,437	1,430	1,456	1,461	1,416	1,389	1,404	1,416	1,417	1,429	1,425	1,414	1,417	1,419	1,420	1,412	1,388	1,389	1,421
Co Jail / F	90	83	85	89	88	92	96	95	96	107	100	108	109	110	113	111	106	103	107	113	115	101
Total Co Jail BK	1,568	1,472	1,517	1,526	1,518	1,548	1,557	1,511	1,485	1,511	1,516	1,525	1,538	1,535	1,527	1,528	1,525	1,523	1,519	1,501	1,504	1,522
Bowie Co., TX	331	330	330	330	324	324	324	324	323	323	328	328	328	328	325	325	325	325	325	325	325	326
309/M	251	251	251	251	250	250	251	250	251	251	250	250	251	251	252	251	249	248	248	249	248	250
309/F	75	70	70	73	73	73	73	74	73	72	72	72	72	72	73	73	73	73	73	76	76	73
Total Act 309	326	321	321	324	323	323	324	324	324	323	322	322	323	323	325	324	322	321	321	325	324	323
Total Non ADC	2,307	2,205	2,250	2,262	2,247	2,275	2,285	2,239	2,212	2,237	2,246	2,254	2,268	2,265	2,258	2,258	2,252	2,249	2,245	2,231	2,233	2,251
Total	17,818	17,782	17,827	17,836	17,827	17,857	17,838	17,833	17,836	17,858	17,848	17,847	17,867	17,866	17,865	17,845	17,848	17,845	17,857	17,857	17,875	17,845

FISCAL YEAR 2019 COUNTY JAIL BACKUP - MARCH 2019

DAY		Jul-18		Aug-18		Sep-18		Oct-18		Nov-18		Dec-18		Jan-19		Feb-19		Mar-19
1	*	1,575		1,618	*	1,646		1,531		1,634	*	1,578		1,461		1,545		1,568
2		1,578		1,624	*	1,646		1,531		1,659	*	1,578		1,461	*	1,545	*	1,568
3		1,594		1,631		1,613		1,520	*	1,659		1,538		1,452	*	1,545	*	1,568
4		1,577	*	1,631		1,613		1,537	*	1,659		1,532		1,430		1,555		1,472
5		1,577	*	1,631		1,583		1,535		1,646		1,521	*	1,430		1,563		1,517
6		1,548		1,649		1,567	*	1,535		1,654		1,519	*	1,430		1,574		1,526
7	*	1,548		1,654		1,552	*	1,535		1,644		1,532		1,431		1,564		1,518
8	*	1,548		1,652	*	1,552		1,535		1,633	*	1,532		1,427		1,598		1,548
9		1,547		1,642	*	1,552		1,527		1,602	*	1,532		1,419	*	1,598	*	1,548
10		1,532		1,665		1,517		1,524	*	1,602		1,509		1,400	*	1,598	*	1,548
11		1,571	*	1,665		1,508		1,557	*	1,602		1,505		1,401		1,591		1,557
12		1,584	*	1,665		1,501		1,578		1,600		1,513	*	1,401		1,595		1,511
13		1,609		1,670		1,503	*	1,578		1,600		1,496	*	1,401		1,608		1,485
14	*	1,609		1,671		1,514	*	1,578		1,618		1,493		1,402		1,627		1,511
15	*	1,609		1,660	*	1,514		1,574		1,626	*	1,493		1,404		1,641		1,516
16		1,598		1,676	*	1,514		1,571		1,633	*	1,493		1,425	*	1,641	*	1,516
17		1,589		1,681		1,505		1,573	*	1,633		1,472		1,434	*	1,641	*	1,516
18		1,569	*	1,681		1,496		1,583	*	1,633		1,458		1,459		1,645		1,525
19		1,563	*	1,681		1,498		1,606		1,633		1,484	*	1,459		1,645		1,538
20		1,559		1,690		1,511	*	1,606		1,620		1,477	*	1,459		1,647		1,535
21	*	1,559		1,683		1,494	*	1,606		1,624		1,463		1,476		1,658		1,527
22	*	1,559		1,677	*	1,494		1,606		1,657	*	1,463		1,476		1,675		1,528
23		1,553		1,685	*	1,494		1,599		1,657	*	1,463		1,479	*	1,675	*	1,528
24		1,560		1,701		1,506		1,619	*	1,657		1,452		1,509	*	1,675	*	1,528
25		1,552	*	1,701		1,524		1,612	*	1,657		1,452		1,513		1,706		1,525
26		1,553	*	1,701		1,542		1,634		1,656		1,452	*	1,513		1,728		1,523
27		1,597		1,700		1,527	*	1,634		1,650		1,449	*	1,513		1,674		1,519
28	*	1,597		1,679		1,532	*	1,634		1,609		1,464		1,528		1,625		1,501
29	*	1,597		1,669	*	1,532		1,602		1,591	*	1,464		1,515				1,504
30		1,623		1,657	*	1,532		1,595		1,578	*	1,464		1,535			*	1,504
31		1,629		1,646				1,621				1,473		1,540			*	1,504
Avg Daily Backup		1,576		1,666		1,536		1,577		1,631		1,494		1,458		1,621		1,525

Notes: Totals do not include 309 Contracts in County Jails (maximum of 336)

Fiscal Year Average as of March 31, 2019 - 1,565

Short-Term Revocation Program Fiscal Year Average as of March 31, 2019 - 669

STTG UNIT COUNTS – MARCH 2019

Unit	Beginning Total	Confirmed	Suspected	In	Out	Paroled	Removed	Ending Total	Total Unit Population	Unit % of STTG's
Benton	86	1	0	4	5	4	0	82	348	23.56%
Cummins	516	0	0	31	19	15	0	513	1,661	30.89%
Delta	168	1	0	14	8	8	0	167	616	27.11%
EARU	591	0	0	18	8	10	0	591	1,675	35.28%
Grimes	355	0	0	41	29	12	0	348	1,054	33.02%
Hawkins	46	0	0	6	3	0	0	49	448	10.94%
Max	254	0	0	12	8	2	0	256	560	45.71%
Mcperson	35	0	0	3	0	0	0	38	1,002	3.79%
MCWR	39	0	0	2	0	1	0	40	131	30.53%
NCU	211	0	0	22	23	0	0	210	825	25.45%
NWAWR	14	0	0	2	0	0	0	16	100	16.00%
ORCU	375	0	0	40	27	16	0	372	1,616	23.02%
ORCU Intake	53	163	0	0	157	0	0	59	232	25.43%
PB/Ester	223	0	0	40	18	16	0	229	1,114	20.56%
RLW	161	0	0	43	31	0	0	173	564	30.67%
TWR	21	0	0	0	0	0	0	21	128	16.41%
Tucker	291	1	0	41	22	0	0	311	988	31.48%
Varner	681	0	0	91	70	9	0	693	1,725	40.17%
Wrightsville	238	1	0	32	22	7	0	242	852	28.40%
Total	4,358	167	0	442	450	100	0	4,410	15,639	28.20%

ORCU Intake brought in 163 new STTG members into ADC last Month.

STTG DISCIPLINARY REPORT – MARCH 2019

Unit	STTG Incidents	STTG Suspected Incidents	Total Unit Disciplinary	Disciplinary Involving STTG	Percentage
Benton	0	0	11	7	63.64%
Cummins	1	6	441	182	41.27%
Delta	0	0	218	58	26.61%
EARU	0	3	404	199	49.26%
Grimes	0	0	86	44	51.16%
Hawkins	0	0	9	1	11.11%
Max	1	5	57	48	84.21%
Mcperson	0	0	217	15	6.91%
MCWR	0	0	2	1	50.00%
NCU	2	0	119	55	46.22%
NWAWR	0	0	10	0	0.00%
ORCU	0	0	241	92	38.17%
ORCU Intake	0	0	14	6	42.86%
PB/Ester	0	0	53	17	32.08%
RLW	0	0	32	17	53.13%
TWR	0	0	3	0	0.00%
Tucker	0	1	108	46	42.59%
Varner	0	0	404	205	50.74%
Wrightsville	1	0	58	32	55.17%
Total	5	15	2,487	1,025	41.21%

STTG COUNTS BY STTG SET – MARCH 2019

STTG Set	Benton	Cummins	Delta	EARU	Grimes	Hawkins	Max	Mcpherson	MCWR	NCU	NWAWR	ORCU	Intake	PB	RLW	TWR	Tucker	Varner	Wrightsville	Total
Asian	2	0	0	1	1	0	0	0	1	0	0	0	0	3	0	0	1	0	1	10
Bloods	10	119	16	102	60	5	59	5	7	40	5	84	2	33	20	0	63	148	37	815
Crips	11	68	18	68	42	2	34	4	5	19	2	45	5	24	22	2	38	106	21	536
Folk	6	39	14	61	29	6	32	8	2	15	4	6	0	12	4	0	19	75	14	346
GD	12	128	40	128	77	9	42	3	8	27	0	85	12	48	39	7	78	129	58	930
Mexican	3	12	7	19	13	2	4	2	1	9	1	9	4	11	4	0	8	26	5	140
Motorcycle	0	2	2	0	2	1	3	1	0	1	0	1	2	3	1	0	5	1	0	25
Other	2	12	0	7	14	2	6	0	0	6	0	20	3	11	6	4	14	11	8	126
People	4	18	5	20	15	1	14	4	0	11	0	14	0	17	8	0	3	24	7	165
Unknown	0	5	7	10	7	0	3	0	0	5	0	12	10	0	6	0	5	9	8	87
W/S	20	25	39	53	36	8	10	9	5	36	4	38	5	35	19	0	30	44	24	440
AB	0	6	2	11	2	1	1	0	3	6	0	5	3	8	1	2	9	7	6	73
AC	1	10	2	12	9	3	11	0	1	6	0	8	1	10	3	2	5	24	5	113
NAE	4	28	4	35	15	3	18	2	4	4	0	25	6	8	18	2	14	31	23	244
WAR	7	41	11	64	26	6	19	0	3	25	0	20	6	6	22	2	19	58	25	360
Total	82	513	167	591	348	49	256	38	40	210	16	372	59	229	173	21	311	693	242	4,410

Key:

GD = Gangster Disciples

W/S = White Supremacist

NAE = New Aryan Empire

WAR = White Aryan Resistance

AC = Aryan Circle

AB = Aryan Brotherhood

INTERNAL AFFAIRS BOARD REPORT - MARCH 2019

March 2019	Opened Investigation	Opened Review	ASP Referral
Battery on Inmate with Serious Injury	1	0	1
Battery on Inmate without Serious Injury	0	0	1
Battery on Staff without Serious Injury	0	0	5
Battery on Staff with Serious Injury	0	0	5
Battery on Staff with Bodily Fluids	0	0	6
Death	0	0	12
Employee Misconduct	2	0	0
Forcible Rape	0	0	2
Inmate on Inmate Sexual Harassment	0	37	0
Inmate on Inmate Sexual Misconduct	0	33	0
Inmate on Inmate nonconsensual Sexual Contact	0	3	0
Other Incident	4	2	0
Introduction of Contraband	5	0	3
Possession of Drugs	0	1	0
Staff on Inmate Sexual Harassment	2	11	0
Staff on Inmate Sexual Misconduct	3	5	2
Staff on Staff Sexual Misconduct	0	3	0
Trafficking	1	0	0
Use of Force	0	70	0
Verbal/Written Threat on Staff	1	0	0
Total	19	165	37

ADC INPATIENT AND EMERGENCY ROOM UTILIZATION

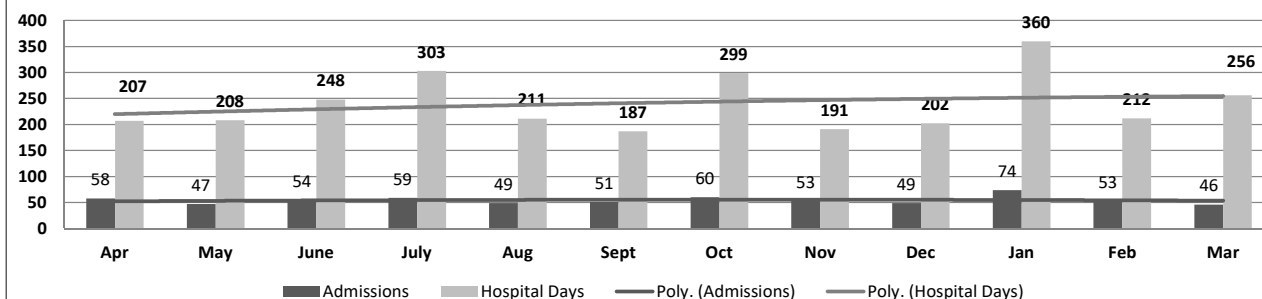
ADC Inpatient Statistics Past 12 Months

	2018						2019						Average
	Apr	May	June	July	Aug	Sept	Oct	Nov	Dec	Jan	Feb	Mar	
Admissions	58	47	54	59	49	51	60	53	49	74	53	46	54.4
Hospital Days	207	208	248	303	211	187	299	191	202	360	212	256	240.3
Average Length of Stay	5.37	4.76	4.91	6.56	5.22	5.48	5.10	6.21	7.07	6.70	7.65	5.57	4.42

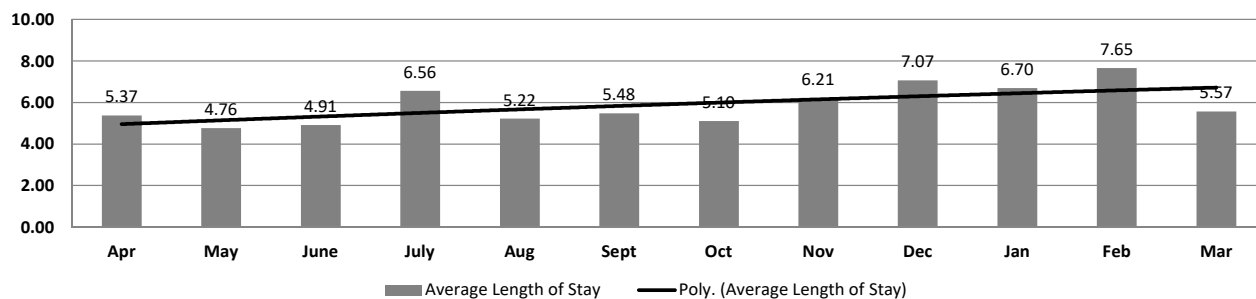
ADC ER Visits Past 12 Months

	2018						2019						Average
	Apr	May	June	July	Aug	Sept	Oct	Nov	Dec	Jan	Feb	Mar	
Emergency Room Visits	94	79	82	117	96	110	95	91	105	100	76	88	94.4

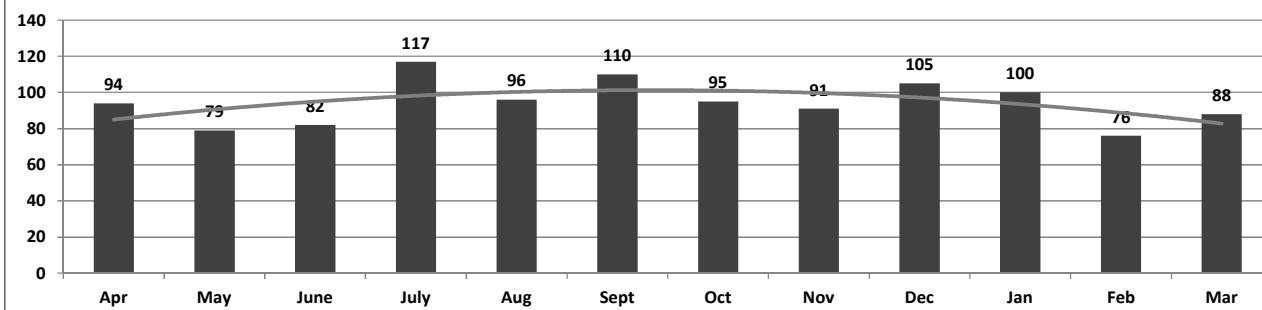
ADC Inpatient Utilization Past 12 Months



ADC Inpatient Average Length of Stay Past 12 Months



ADC Emergency Room Visits Past 12 Months



MEDICAL GRIEVANCE BOARD REPORT – MARCH 2019

Unit	Acknowledged/ Received	Rejected	Reviewed & Signed by Dep Director	With Merit	With Merit, but Resolved	% With Merit	Without Merit
Benton	0	0	0	0	0	0%	0
Bowie Co.	2	0	0	0	0	0%	0
CMU	0	0	0	0	0	0%	0
Cummins	10	3	9	0	0	0%	9
Delta	2	0	1	0	0	0%	1
EARU	6	0	10	4	0	40%	6
EARU Max	6	1	11	3	0	27%	8
Ester	1	0	2	0	0	0%	2
Grimes	17	2	6	0	0	0%	6
Hawkins	2	0	1	0	0	0%	1
McPherson	10	1	4	0	0	0%	4
MCWRC	0	0	0	0	0	0%	0
MSU	13	1	11	0	0	0%	11
North Central	9	0	10	0	0	0%	10
NWAWRC	0	0	0	0	0	0%	0
Ouachita	24	2	22	2	0	9%	20
Pine Bluff	0	1	0	0	0	0%	0
Randall L. Williams	2	0	0	0	0	0%	0
SNN	0	0	0	0	0	0%	0
TRCC	0	0	0	0	0	0%	0
Tucker	11	8	11	1	1	18%	9
Varner	21	1	16	1	2	19%	13
Varner Super Max	28	4	18	1	0	6%	17
WRU	4	1	2	0	0	0%	2
WHM	1	0	3	0	0	0%	3
WWR	0	0	0	0	0	0%	0
TOTAL	169	25	137	12	3	11%	122

CHAPLAINCY

Month: March	Year: 2019	CUMMINS	DELTA REGIONAL	EAST ARKANSAS	EAST ARKANSAS MAX	ESTER	GRIMES	HAWKINS	MAXIMUM	MCPHERSON	NORTH CENTRAL	OUACHITA RIVER	PINE BLUFF	RANDALL L. WILLIAMS	TUCKER	VARNER	VARNER MAX	WRIGHTSVILLE	TOTAL
Services Chaplains Oversaw																			
Christian																			
Population		6	8	4	0	4	12	1	4	4	14	5	3	15	15	10	0	6	111
Segregation		0	0	0	0	0	0	0	0	0	0	2	0	0	0	0	0	0	2
Muslim																			
Population		4	4	0	0	1	5	2	1	4	1	1	1	5	0	5	0	1	35
Segregation		0	0	0	0	0	0	0	0	0	0	0	0	0	0	0	0	0	0
148																			
Volunteers in Charge																			
Protestant		10	15	31	0	17	6	16	24	32	0	9	15	7	24	13	6	23	248
Catholic		2	0	3	0	1	2	14	1	2	4	4	1	0	0	3	4	4	45
Muslim		1	0	2	0	0	0	0	0	0	0	8	0	0	2	0	0	4	17
Other		1	0	4	0	0	0	2	17	4	0	19	0	0	0	8	0	2	57
Baptism		5	0	22	0	0	0	0	0	48	2	0	0	1	0	0	0	6	84
Marriages																			
		0	0	0	0	0	0	0	0	0	0	0	0	0	0	0	0	0	0
Distributed by Chaplains																			
Greeting Cards		51	4	0	0	11	256	250	65	632	72	30	159	32	62	100	134	0	1,858
Bibles, Quran, Torah, Etc.		20	15	22	26	38	34	3	10	43	60	240	4	25	10	30	18	10	608
Study Course		0	4	6	4	12	8	2	65	58	0	40	0	12	3	61	2	0	277
Writing Supplies		0	0	0	0	0	28	200	25	82	0	300	0	10	20	0	0	0	665
Literature		875	500	561	387	55	0	200	400	125	780	250	150	688	3	505	104	278	5,861
Chaplain's Visits																			
Barracks		46	48	10	0	48	52	11	136	52	59	230	162	22	249	189	0	29	1,343
Approximate Hours Spent in Barracks		25	5	5	0	24	26	6	14	20	15	58	24	4	62	47	6	16	357
Inmate Office visits		49	119	125	0	77	94	64	22	22	55	49	30	200	189	97	0	23	1,215
Other Office visits		12	12	27	0	8	12	10	10	18	15	180	0	15	45	47	14	6	431
Hospital		0	0	0	0	0	2	1	1	2	0	53	0	7	0	0	0	0	66
Infirmary/Sick Call		3	3	5	0	4	31	4	10	12	2	28	4	5	2	10	1	3	127
Restrictive/Punitive Housing		7	3	0	34	0	32	0	23	24	2	33	4	5	6	0	14	3	190
PC - DRU		0	3	0	0	0	0	0	0	0	0	0	0	0	0	0	0	0	3
Visitation Days		0	2	0	0	0	0	0	2	0	0	3	0	2	0	0	0	0	9
Volunteer Visits																			
RCV		0	1	26	1	0	0	58	0	42	0	60	0	26	0	3	0	1	218
OCV		13	17	51	0	30	0	14	308	31	99	0	19	0	157	6	0	23	768
Spiritual Advisor		3	0	1	0	0	0	0	0	1	0	0	0	0	3	0	0	0	8
CRA		26	17	102	12	25	464	85	136	58	82	121	23	30	119	55	10	32	1,397
Religious Volunteer Hours																			
Volunteer Hours		34	98	387	30	140	486	197	445	227	388	610	160	312	783	201	26	126	4,650
Denominational/Volunteer Chaplain Hours		71	4	29	0	180	22	139	105	112	122	36	30	81	225	30	2	46	1,234
5,884																			
Other Activities of Chaplain																			
Counseled Employees		3	6	8	0	5	0	5	4	29	2	30	0	0	4	20	11	4	131
Orientation Sessions		4	1	0	0	0	0	0	0	1	1	0	0	0	0	0	0	0	7
Free World Devotions		0	1	6	0	2	16	0	0	2	0	4	0	0	0	12	0	0	43
Spoke in Churches		9	0	2	0	4	18	0	1	2	0	9	0	2	4	25	0	1	77
Crisis Intervention Sessions		9	8	2	0	4	0	6	1	17	2	52	8	0	10	6	4	10	139
Marriage Counseling		0	0	1	0	0	2	0	1	1	1	15	0	0	0	1	0	0	22
Denominational Meeting		1	0	1	0	1	0	1	1	0	0	1	0	3	0	3	0	0	12
Chaplain's Meeting		1	1	1	0	1	1	1	1	1	1	1	1	0	0	3	0	1	15
Volunteer Training Session		0	0	1	0	0	0	1	2	0	1	1	0	0	0	0	0	1	7
Chaplain Transfers																			
		1	0	0	0	0	0	0	0	0	0	0	1	0	0	0	0	0	2
Chaplain Promotions																			
		0	0	0	0	0	0	0	0	0	0	0	0	0	0	0	0	0	0
PAL PROGRAM																			
Enrolled at start of month		47	21	50	0	27	49	34	17	56	18	30	0	28	58	51	0	25	511
Enrolled during the month		13	5	1	0	7	9	1	0	10	4	13	0	5	16	8	0	11	103
Removed From PAL Program																			
# Paroled		1	0	0	0	0	1	1	0	1	0	1	0	2	2	2	0	1	12
# Completed		1	1	0	0	0	5	1	1	2	0	3	0	0	2	0	0	2	18
# Withdrew		6	1	0	0	0	1	1	0	5	0	0	0	0	2	1	0	2	19
# Removed		4	3	1	0	0	1	0	0	1	0	3	0	1	2	3	0	1	20
# Transferred		2	0	0	0	0	0	0	0	1	1	0	0	0	4	3	0	1	12
Total Removed from PAL Program		14	5	1	0	0	8	3	1	10	1	7	0	3	12	9	0	7	81
Total Enrolled at the End of the Month		46	21	50	0	34	50	32	16	56	21	36	0	30	62	50	0	29	533
Volunteers in PAL																			
		15	2	11	0	6	32	15	8	33	5	6	0	3	6	7	0	3	152
Special Events:																			
		0	1	2	0	1	0	0	4	2	2	1	1	1	2	1	0	0	18

MONTHLY PURCHASING REPORT – MARCH 2019

PURCHASE ORDERS OVER \$10,000.00						
VENDOR	DESCRIPTION	LOCATION	PO#	PURCHASE AMOUNT	FUND	
MJ Kellner	Food Purchases	Central Warehouse	4501863936	\$150,606.40	Operational Budget	
Arkansas Correctional Industries	Clothing	Cummins/Commissary	4501863954	\$33,400.89	Operational Budget	
Kerr Paper & Supply	Bags & Food Film Wrap	Central Warehouse	4501863934	\$14,148.20	Operational Budget	
William R Hill & Co Inc, Doug Waldmann	Food Purchases	Central Warehouse	4501864239	\$116,567.56	Operational Budget	
Arkansas Correctional Industries	Food-Coffee & Tea	Central Warehouse	4501864242	\$92,005.00	Operational Budget	
A C Sales Co	Food Purchases	Central Warehouse	4501864245	\$43,170.00	Operational Budget	
Redwood Toxicology Laboratory Inc	Drug Testing Supplies	Chief Deputy Institutions	4501864531	\$36,300.00	Operational Budget	
Hurst Boiler & Welding Co Inc	Feedwater System for Boiler	Construction/Construction	4501864654	\$16,121.60	Telephone Funds	
Cummins Mid South Inc	Generator	Cummins/Maintenance	4501864659	\$11,724.51	Operational Budget	
Razor Chemical Inc	Janitorial Supplies	Delta/Janitorial Factory	4501864832	\$22,650.00	Operational Industry Budget	
Westrock Coffee LLC	Food-Coffee & Tea	Grimes	4501864854	\$16,620.00	Operational Industry Budget	
Pioneer Hi Red International Inc	Diacamba Resistant Soybeans for EARU	EARU/Farm	4501846188	\$14,145.00	Operational Farm Budget	
Mid States Services Inc	Toilet Paper	Wrightsville/Warehouse	4501865155	\$20,966.40	Operational Industry Budget	
Seedway LLC	Garden Seed	Grimes	4501863115	\$13,611.61	Operational Farm Budget	
Green & Chapman LLC	Fuel-Unleaded	Cummins/Commissary	4501863739	\$15,454.97	Operational Budget	
Arkansas Correctional Industries	Inmate Beds	EARU	4501865023	\$11,510.93	Operational Budget	
Mid South Sales Ince	Fuel-Unleaded & Diesel	Central Warehouse	4501864840	\$10,877.30	Operational Budget	
US Foods Inc	Food Purchases	Central Warehouse	4501865928	\$43,161.60	Operational Budget	
Jones-Zylon Co	Water Tumblers	Central Warehouse	4501865932	\$10,951.60	Operational Budget	
John W Gasparini Inc Mark's Plumbing	Plumbing Supplies	Ouachita/Maintenance	4501865814	\$12,791.49	Operational Budget	
Tabb Textiles Co Inc	Fabric-White Twill	Wrightsville/Warehouse	4501865952	\$42,500.00	Operational Industry Budget	
Tommy Huntley, Huntley Metal Sales	Stainless Steel	Construction/Construction	4501866130	\$10,898.25	Operational Budget	
Riceland Foods Inc	Feed-Soybean Meal for Livestock	Cummins/Farm	4501866432	\$70,200.00	Operational Farm Budget	
Mid States Services Inc	Toilet Paper	Wrightsville/Warehouse	4501866318	\$20,966.40	Operational Industry Budget	
A Tech Inc	Electrical Parts-Sensors & Cables	Construction/Construction	4501866566	\$13,315.67	DOC Existing Facilities	
Robbins Sales Company Inc	Food Purchases	Central Warehouse	4501866615	\$34,843.20	Operational Budget	
American Paper & Twine Co	Paper Towels	Central Warehouse	4501866663	\$50,700.94	Operational Budget	
William R Hill & Co Inc, Doug Waldmann	Food Purchases	Central Warehouse	4501866665	\$255,688.96	Operational Budget	
Miller Bowie Supply.Com	Feed for Baby Pigs	Cummins/Farm	4501866788	\$14,229.60	Operational Farm Budget	
The Presidio Corporation	Network Equipment-Phones	Information Services	4501866872	\$14,130.88	Telephone Funds	
Oneal Steel Inc	Building Supplies-Metal	Construction/Construction	4501867239	\$32,274.88	DOC Existing Facilities	
Foam Products of Tyler Inc	Foam & Foam Wall Pad	Tucker/Industry	4501867117	\$10,989.00	Operational Industry Budget	
MFA Incorporated	Herbicide for Soybean Crop	Tucker/Farm	4501867193	\$48,287.50	Operational Farm Budget	
US Foods Inc	Food Purchases	Central Warehouse	4501867461	\$75,000.00	Operational Budget	
Green Point AG LLC	Herbicides for Rice Crop	Tucker/Farm	4501867525	\$46,825.25	Operational Farm Budget	
Green Point AG LLC	Herbicides for Soybean Crop	Tucker/Farm	4501867519	\$55,347.80	Operational Farm Budget	
Southern Folger Detention Equipment	Steel Door Control Relay Boards	Ouachita/Maintenance	4501867788	\$14,065.92	Operational Budget	
Wholesale Electric Supply Inc	Electrical Supplies	Construction/Construction	4501867537	\$39,271.95	DOC Existing Facilities	
Heritage AG of Arkansas at England	Lease on Rice Drill & Seed Cart	Tucker/Farm	4501867513	\$48,000.00	Operational Farm Budget	
US Foods Inc	Food Purchases	Central Warehouse	4501867614	\$260,564.84	Operational Budget	
National Food Group	Food Purchases	Central Warehouse	4501867931	\$146,175.80	Operational Budget	
Mid South Sales Ince	Fuel-Unleaded & Diesel	Central Warehouse	4501867618	\$11,730.06	Operational Budget	
Central Laundry Equipment Inc	Dishwasher	Miss Co	4501866457	\$20,919.28	Work Release	
Simpson Door and Hardware LLC	Locks & Hinges	Construction/Construction	4501867945	\$61,935.50	DOC Existing Facilities	
Mid States Services Inc	Toilet Paper	Wrightsville/Warehouse	4501867729	\$20,966.40	Operational Industry Budget	
Cruise Uniforms and Equipment Inc	Body Armor	Training Academy	4501868004	\$46,691.78	Operational Budget	
US Foods Inc	Steam Kettle	Grimes/Maintenance	4501866538	\$26,819.45	Work Release	
US Foods Inc	Heated Food Cabinets	Delta	4501866586	\$22,608.17	Work Release	
Miller Bowie Supply.Com	Calcium Carbonate for Feed	Cummins/Farm	4501868205	\$11,440.00	Operational Farm Budget	
Westrock Coffee LLC	Food-Coffee & Tea	Grimes	4501868180	\$33,240.00	Operational Industry Budget	
Tri-County Farmers Association	Fertilizer for Corn	EARU/Farm	4501868278	\$32,310.00	Operational Farm Budget	
Helena Chemical Company	Fertilizer for Corn	EARU/Farm	4501868294	\$49,459.14	Operational Farm Budget	
US Foods Inc	Griddle & Serving Cabinets	North Central	4501868235	\$27,851.57	Work Release	
Tri-County Farmers Association	Fertilizer for Soybeans	EARU/Farm	4501868301	\$63,750.00	Operational Farm Budget	

PERSONNEL REPORT – MARCH 2019

UNIT	AUTHORIZED	FILLED	VACANT	% VACANT	HIRED	VOLUNTARY TERMINATION	INVOLUNTARY TERMINATION	RETIREMENT
BENTON (CR05)	77	74	3	3.90%	3	1	0	0
CENTRAL OFFICE (CR01, CR02, CR08 & CR22)	274	251	23	8.39%	2	2	0	0
509 CHAPL ADMIN	26	25	1	3.85%	0	0	0	0
CONSTRUCTION (CR04)	59	54	5	8.47%	0	0	0	0
CUMMINS (CR09)	427	385	42	9.84%	7	6	6	0
DELTA (CR10)	183	176	7	3.83%	2	2	0	1
EAST ARKANSAS (CR12)	366	309	57	15.57%	6	7	6	0
ESTER (CR11)	156	143	13	8.33%	2	1	1	0
FARM (CR29)	60	50	10	16.67%	0	9	0	0
GRIMES (CR27)	244	221	23	9.43%	3	0	2	0
HAWKINS (CR06)	76	72	4	5.26%	0	0	0	0
INDUSTRY (CR07)	52	42	10	19.23%	0	0	0	0
MAXIMUM SECURITY (CR14)	230	186	44	19.13%	9	6	2	0
MCPHERSON (CR28)	231	211	20	8.66%	5	3	2	0
MENTAL HEALTH	182	147	35	19.23%	2	3	0	0
MISS COUNTY (CR15)	38	32	6	15.79%	0	1	0	0
NORTH CENTRAL (CR16)	197	188	9	4.57%	2	3	2	0
NORTHWEST ARK (CR17)	30	28	2	6.67%	0	0	0	0
OUACHITA RIVER (CR30)	467	434	33	7.07%	8	9	1	0
PINE BLUFF (CR20)	168	163	5	2.98%	4	0	1	0
RANDALL L. WILLIAMS (CR13)	146	141	5	3.42%	3	2	0	0
TEXARKANA (CR21)	31	26	5	16.13%	1	1	0	0
TRANSPORTATION (CR32)	102	100	2	1.96%	0	0	0	0
TUCKER (CR23)	199	162	37	18.59%	5	4	2	1
VARNER (CR24)	358	279	79	22.07%	8	2	10	0
WRIGHTSVILLE (CR25)	207	187	20	9.66%	3	0	1	0
TOTAL	4,586*	4,086*	500	10.90%	75	62	36	2

Term/Hire report run 4/1/19 - PSR created 3/29/19 for 3/31/19

*These numbers reflect both security and non-security employees.

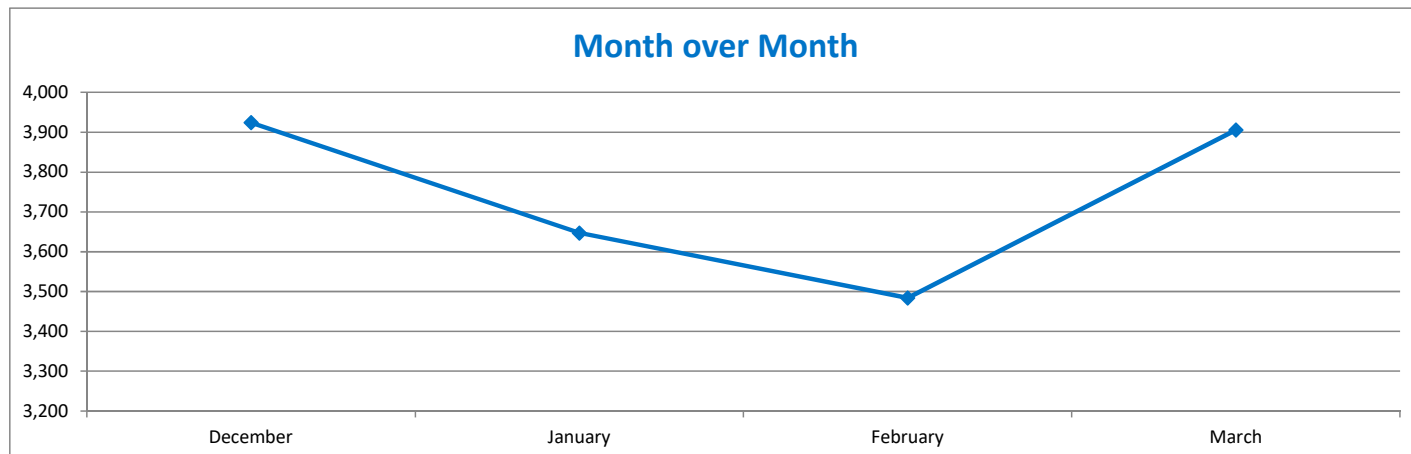
SECURUS VIDEO VISITATION ACTIVITY TRACKER - MARCH 2019

AR-DOC SVV Activity Tracker

Total ADP: 15,586

Total Visits by Month	December	January	February	March
Total (Includes SuperMax)	3,924	3,647	3,484	3,905
Target Objective	15,587	15,587	15,587	15,587

Anywhere Visitation Performance:



Completed Visits

Site	Current Month	Previous Month
Benton	240	142
Cummins	223	201
Delta Regional	206	177
East Arkansas Regional	218	249
Ester	219	191
Grimes	407	364
J Aaron Hawkins Sr.	192	146
Tucker Max	97	100
Mcperson	253	261
Mississippi County WRC	23	17
North Central	186	202
NW Arkansas WRC	8	6
Ouachita River	400	356
Pine Bluff Complex	142	134
Randall L Williams	248	202
State Police Barracks	28	26
Texarkana Regional	75	60
Tucker Unit	208	177
Varner	221	202
Wrightsville Unit	301	266
Pine Bluff Re-Entry	10	5
Total:	3,905	3,484

Missed by Inmate

Site	Current Month	Previous Month
Benton	11	4
Cummins	10	11
Delta Regional	1	1
East Arkansas Regional	9	8
Ester	7	0
Grimes	6	6
J Aaron Hawkins Sr.	5	3
Tucker Max	9	4
Mcperson	3	5
Mississippi County WRC	5	2
North Central	7	4
NW Arkansas WRC	2	0
Ouachita River	8	8
Pine Bluff Complex	6	1
Randall L Williams	5	5
State Police Barracks	0	0
Texarkana Regional	5	4
Tucker Unit	16	1
Varner	17	25
Wrightsville Unit	8	3
Pine Bluff Re-Entry	3	0
Total:	143	95

LEASED SECURUS TABLETS - MARCH 2019

FACILITY NAME	FEB. '19 LEASED	MAR. '19 LEASED	FEB. '19 TOTAL	MAR. '19 TOTAL
Benton Unit	93	98	104	109
Cummins Unit	278	271	380	373
Delta Regional Unit	109	114	162	167
East Arkansas Regional Unit	201	202	305	306
Ester Unit	104	98	256	258
Grimes Unit	164	175	246	262
J Aaron Hawkins Sr Center For Women	112	104	196	188
McPherson Unit	222	232	337	347
Mississippi County Work Release Center	38	36	49	47
North Central Unit	130	137	212	219
Northwest Arkansas Work Release Center	46	47	56	57
Ouachita River Unit	236	228	360	352
Pine Bluff Re-Entry Center	12	10	14	12
Pine Bluff Unit	71	71	84	84
Randall L. Williams Facility	113	109	153	149
State Police Barracks	18	19	22	23
Texarkana Regional Correction Center	30	39	42	51
Tucker Maximum Security Unit	75	74	117	116
Tucker Unit	167	172	238	243
Varner Unit	212	221	318	327
Wrightsville Unit	182	194	246	258
	2,613	2,651	3,897	3,948

*The difference between LEASED and TOTAL tablets reflects the number of program and officer tablets.

CONSTRUCTION BUDGET / STATUS REPORT - APRIL 9, 2019 — [Page 1 of 2]

Fund	Project Description	Total Projected	Budget	Available Funds	\$ % Complete	Construction % Complete	Notes
7004810	Cummins Poultry Houses	\$ 5,939,457	\$ 6,100,000	\$ 160,543	97%	98%	To correct ramp problem, Farm is looking at changing forklifts.
KBR4Q95	ESTER - Phase 3 - General Improvement Fund	2,951,933	4,383,781	1,431,849	67%	98%	Parking Lot in design. Cameras will be installed around perimeter after paving. ADFA bonds turned back on Phases 1 & 2 1A
700483A	EARU ISO Rec Yard	265,735	271,430	5,695	98%	100%	Complete
700483A	Varner ISO Rec Yard	180,277	180,953	676	100%	75%	Rec Pens underway, all parts built
700483A	EARU Max Rec Precast Rec Yard	67,887	659,553	591,666	10%	0%	Preparing bid package.
700483A	Tucker Max Precast Rec Yard	57,092	1,210,000	1,152,908	5%	0%	Plans being submitted to DBA
700483A	Cummins Precast Rec Yard	47,449	927,500	880,051	5%	0%	Plans being submitted to DBA
KBR4Q95	Bullpens	347,359	851,999	504,640	41%	98%	Bullpens at Varner are complete.
KBR4Q95	13 & 15 Barracks Door Revisions	111,509	174,000	62,491	64%	58%	All doors installed in 13 Barracks. Bullpen locks still on order.
KBR4Q95	Camera's (New)	763,329	1,248,000	484,671	61%	56%	Cameras ordered, installation underway. Delta complete, working at Varner, and Tucker.
700485A	Integrity Energy Improvements at EARU & Delta	16,524,885	17,010,204	485,319	97%	97%	lights (100%), plumbing 99%, water (95%), compost (100%), & solar (100%), HVAC (95%).
700486A	Pine Bluff Unit Barracks 9 Renovation	341,307	437,000	95,693	78%	95%	9A, B C & D construction complete, 4/5/19
700482A	Pine Bluff Unit Barracks 10 Renovation	458,618	784,000	325,382	58%	0%	underway, followed completion of Barracks 9
KBSCW18	McPherson Administration	39,446.81	395,439	355,992	10%	0%	preparing Bid packages, and ordering materials.
KBSBW18	McPherson Visitation	28,628.78	312,430	283,801	9%	0%	
KBSHW18	Tucker Water Treatment	-	1,093,848	1,093,848	0%	0%	submitting for designer approval.
KBSFW18	Max Armory	-	70,000	70,000	0%	0%	to replace existing inadequate Armory. Plans underway
KBSFW18	Varner Armory	-	68,399	68,399	0%	0%	DBA comments received & answered. DBA Approved
7004820	Central Office Roof Replacement	398,893.77	500,000	101,106	80%	99%	Started 12/3, 99% complete
7004820	Pine Bluff Infirmary Roof Replacement	251.20	132,800	132,549	0%		Bids received, yet to award.
509	Wrightsville ACI Roof Replacement	251,332.07	255,000	3,668	99%	100%	replaced roof. Complete
	Springdale WRC Laundry and Commissary	-		0	0%		Revised architect's floorplan, preparing plans, geotech writing

Telephone Projects

Maintenance & Operations	Fire Alarm Upgrades (All Units)	22,346	53,000	30,654	42%	38%	on-going
	Gas Stations - Canopy (C/O)	0	-	0	0%	97%	Steel structure completed.
	Stainless Steel - Kitchen/Shower/Restrooms - All Units	12,419	20,000	7,581	62%	60%	continual need
	Parking Lot - Gravel and Paving - EARU	0	68,000	68,000	0%	0%	Parking lot complete. Acquired R.O.W., Plans sent to DBA
	Gates and Fences all units	20,909	30,000	9,091	70%	55%	to improve security
	ACA Maintenance	97,046	100,000	2,954	97%	95%	four more Units coming up. PB, NWAARC, & Industry complete
	ADA Projects - All Units	371	1,000	629	37%	37%	as needed.
	Fast Top Floor Systems (kitchen/laundry/showers all units)	24,939	25,000	61	100%	100%	projects as needed. ORCU, NWAARC & Texarkana 100% complete, Benton & Tucker next.



CONSTRUCTION BUDGET / STATUS REPORT - APRIL 9, 2019 — [Page 2 of 2]

Fund	Project Description	Total Projected	Budget	Available Funds	\$ % Complete	Construction % Complete	Notes
Maintenance & Operations	Camera Equipment - All Units	174,060	175,000	940	99%	100%	cameras as requested/approved.
	Lock/Riot Gates - All Units	90,112	90,500	388	100%	95%	on-going.
	AC Units-All Units	64,965	100,000	35,035	65%	60%	repairing & replacing daily.
	Subtotal	\$ 507,167	\$ 662,500	\$ 155,333			
FY19 Carry Forward	Metal Ceilings	0	25,000	25,000	0%	0%	installing at Tucker Barracks 5
	ORCU Gravel Pit Operations	8,697	35,000	26,303	25%	100%	on-going. Elect upgrades complete, crusher operating.
	Dog Kennel/Horse Stable Malvern	0	48,000	48,000	0%	0%	DBA comments received, responses underway.
	Emergency Generator - All Units	121,776	145,000	23,224	84%	98%	EARU complete. Wrightsville Infirmary generator purchased.
	Roof Repairs-Cummins	2,091	189,700	128,901	32%	0%	Prepared large order for multiple Units. Currently at the Max. Office of State Procurement secured a State contract to purchase roofing materials.
	Roof Repairs-Cummins Laundry	0				0%	
	Roof Repairs-East Arkansas	0				0%	
	Roof Repairs-Max	56,980				50%	
	Roof Repairs-Tucker	0				20%	
	Roof Repairs-Varner	1,728				0%	
	Roof Repairs-Wrightsville	0				0%	
	Boiler Repair	66,892	100,000	33,108	67%	100%	continually needing repair
	Subtotal	\$ 258,164	\$ 542,700	\$ 284,536			
New Projects	EARU Sewer lift station	72,782	75,000	2,218	97%	100%	Project complete and operating.
	Tucker 4 new filters & one aeration tank	11,567	500,000	488,434	2%	0%	Plans approved by ADH & DBA, Plans & bid documents sent to DBA.
	Change media in 7 water filters at Tucker	4,132	6,000	1,869	69%	100%	Filter media changed out in all 7 filters. Water quality improving.
	Tucker Barracks 10 covered walkway	0	-	0	0%	0%	Plans being submitted to DBA
	Max manhole	0	-	0	0%	0%	to provide access to a blockage point in sewer
	RLW Sewer relocation 400' + 2 MH	0	34,000	34,000	0%	0%	frequent stoppages, defect in pipe line.
	Additional Metal Fab shop	0	-	0	0%	0%	room to do more metal work
	PB Warehouse Drive replacement	0	50,000	50,000	0%	0%	asphalt drive pot holed
	Subtotal	\$ 88,480	\$ 665,000	\$ 576,520			
	Architect Fees	28,651	30,000	1,349	96%		
	Total	\$ 882,463	\$ 1,900,200	\$ 1,017,738			

Notes

Report has not been reconciled against Accountings Reconciled Reports.
Tolerance/Deviation is with in 1% of Projected Spending.