

ADC Director's Report April 2016

Wendy Kelley
Director



PUBLIC RELATIONS

RESEARCH/PLANNING

Average County Jail Back-up – The backup in the County Jails averaged 943 Inmates per day during the month of March 2016 – down from an average of **1,178** Inmates per day during the month of February 2016.

Inmate Population Growth/Projection – At the end of March 2016 the Arkansas Department of Correction population totaled **17,573** representing a decrease of **134** inmates since the first of January. Calendar year 2016 has seen an average decrease of **45** inmates per month, down from an average decrease of 14 inmates per month during calendar year 2015. (Admissions for March totaled 933 while releases totaled 983 for a net decrease in-house of 50 inmates.)

LEGAL SERVICES

INMATE GRIEVANCE

Inmate Formal / Informal Grievances: In March, there were a total of 2,260 formal grievances filed and 4,374 informal grievances filed at various units.

Institutional Grievances: There were a total of 684 appeals of institutional grievances received and 524 appeals were answered in March. Five were found with merit.

PREA

PREA Hotline Data:

There were 24 issues with the PREA hotline. Internal Affairs is handling all PREA investigations. All PREA hotline calls are being entered into eOMIS and assigned an incident number.

Number of calls received	235
Total Number of Repeat Calls	58
Total Number of Calls With No Message	65
Total Reported PREA Issue Calls	24
Total Reported non-PREA Calls	73
Total Calls Due to Technical Failure	0
Total Calls Referred to IAD	15

STTG

Jacob Higgins was promoted to Internal Affairs/STTG Agency Coordinator at Central Office. The STTG Coordinator assisted two outside agencies with information and consulted on intelligence issues relating to ADC STTG inmates. The first STTG quarterly meeting of 2016 was held with every STTG coordinator from the DOC in attendance.

FARM

The month of March proved to be the wettest month that anyone can remember in a long time. We experienced extreme flooding at all farms. During the month we had over 12 inches of rain at all locations.

The fourth annual horse sale was held on March 12. We sold 38 horses. Our crowd seemed to be down in number, but we had several bidders. I have received feedback from several buyers that they are very pleased with their horses and look forward to next year's sale. The average selling price was \$764/ horse. The highest priced horse was a gray gelding used at the Cummins beef herd. He sold for \$4,150.

Vegetables are being planted statewide in all gardens. Due to the cool temperatures and wet conditions, progress is slow.

The Cummins farm has all of the corn ground ready. They planted about 400 acres of rice. The Tucker farm put their preplant fertilizer out and will be tilling most of their rice acres this year. The EARU farm worked on getting their garden off to a good start and prepared their ground for corn and milo.

The bulls were pulled from the Cummins beef herd. Staff is setting up new irrigation at Cummins for hay production. They will be planting Alfalfa & Bermuda grass to increase hay production.

The NCU horse program is working on building new fences on ADC property to increase pasture and hay production. They will start a program clearing up the additional property purchased by the agency and other areas to add more pastures.

The winter flooding took a toll on fences at all Units. Farm staff will be using squads to help clear pastures of debris and fix fences.

ADMINISTRATIVE SERVICES**BUDGET SECTION**

Two Act 715 cases were held on March 4 in the Pulaski County Courthouse against David K. Moore #116061 and Veronice Kmiecik #750276. Judge Fox ordered full reimbursement of \$41,422.26 for David K. Moore. A settlement was reached with Veronice Kmiecik who had dependents, and Judge Griffen ordered \$60,000 reimbursement to the State to help pay for the care and custody of Inmate Kmiecik.

One Act 715 case was held on March 22 in the Pulaski County Courthouse against Toney W. Gilbert, Sr. #147890. Judge Fox requested more information regarding the threshold in determining the accounts reported to the Attorney General's office. A post hearing motion has been filed.

PROCUREMENT SECTION**Contracts/Bids Status**

Contract Renewals
Field Rider Hats

Contracts/Bids (in process by OSP)

Ester Unit Phase III
HVAC
Metal Building
Ceiling Material
Plumbing Components
Metal Building (ORCU Chapel)

Awarded Contract (ABA)

Ester Unit
Fire Suppression
Structural Steel
Roofing

Procurement/Contracts Report (required by policy) –

For March, Purchase Orders and Contracts in excess of \$10,000 amounted to \$3,648,925.48. Of this amount, \$1,661,326.15 was for Inmate Care and Custody related items (food, shoes, clothing, etc.). Bulk fuel costs for the month of March were \$50,644.87 - average cost of E-10 was \$1.58/gallon; average cost of bulk diesel was \$1.33/gallon for the month of March.

HUMAN RESOURCES

Workplace Safety – During the month of March, the modified version of the Health and Safety Plan was presented to two Basic Training classes with a total of 109 cadets in attendance.

Ninety-three incidents were reported to the company nurse in March, which brings our total to 197 incidents in 2016. The safety topic, "Decision Driving," was presented to 49 employees located at the Administration Annex East Facility. East Arkansas Regional Unit was placed on the Workers' Compensation Rule32 Program. They will be reviewed after six months.

Benefits - Twenty-one (21) MIPS promotions and 140 MIPS payments were made. Seventy-two (72) FMLA requests were processed with all approved. A total of seven (7) CAT leave requests were processed with two approved and five (5) denied. Three applications were received for shared leave with two (2) approved for a total 366 of donated time and one (1) denied.

Physical Assessments –A total of 219 applicants and incumbent personnel were assessed in the month of March. One hundred-eleven (111) incumbent personnel successfully completed their physical assessments, and two (2) incumbent personnel did not. Of those two (2), both rescheduled and passed. One-hundred-five (105) applicants passed their physical assessments, and one (1) did not. That applicant rescheduled and passed at a later date.

Employment – Facebook results for the month showed a total of 3,222 "likes" of our page. Through Discover Corrections, there were 4,024 people from across the U.S. who viewed ADC's page. Job Fairs for March were held in the following locations: the UA Community College in Batesville and Arkansas State University in Mountain Home. A total of 453 potential applicants were contacted during those three (3) job fairs.

To prevent the duplicating of information, we are now only tracking CO I applications through the ARStateJobs website. This site does not have the capabilities to give us a breakdown.

A total of 2,224 applications were received during March. Sixty-six (66) non-correctional applications and 102 CO-I applications were processed. Eighty-five (85) correctional officers were hired, and 16 correctional officers were rehired.

Vacancies, Hires, and Terminations - On March 31, a total of 582 vacancies, 113 new hires, and 90 terminations were at the various ADC locations.

ADMINISTRATIVE SERVICES DIVISION MONTHLY REPORTS INCLUDE:

Gifts, Grants, and Donations/Inmate Welfare Fund Balance (required by policy) – During the month of March 2016 are reported as follows:

Gifts, Grants and Donations:

Donations for the month of March 2016 were \$1,900.

Inmate Welfare Fund balance on March 31 was \$4,434,321.39.

PAWS in Prison Fund balances total on March 31, were \$75,888.56 in ADC. Account (7004822/Donations) \$19,109.05 and ADC account (NDC0500/Recycling) \$56,779.51. This does not include the Foundation account managed by PIP Foundation Board.

INFORMATION TECHNOLOGY

The network team has completed the following projects:

Fiber installation to the school building at Delta Regional Unit

Fiber has been run at MCP for the Parole and Intake offices and has been spliced. The Intake section is active on fiber. The Parole office is pending additional service needs before cutover.

Fiber to Grimes SATP is pending materials being ordered.

The eOMIS team provided specialized eOMIS training for Chris Villines and Josh Curtis of Association of Arkansas Counties (AAC).

eOMIS staff completed the following during the month:

- Attended the records' supervisor meeting at the ADC school district and reviewed eOMIS changes that would affect job duties. Changes include issues with the current DL/ID process and enhancements to the time computation section that requires records staff to recalculate both the sentence components and the release dates prior to completion of the release verification form.
- Received the quote from Marquis on the School District Development request. An overview of the project was provided to Dr. Glover, Diane Kelnhofer, and Andre Shelby. School District approved development of the project.

Continue to meet with SECURUS on the service contract and deployment of Threads, IPRO, and Inmate KIOSK. Three days of training was provided by SECURUS to key staff on THREADS. IPRO training is scheduled for April 20-21.

TRAINING ACADEMY

Basic Training Division - BCOT 2016-B class graduated on March 4 with 69 cadets. The Willis H. Sargent Award winner was Gilbert Byrd of the Maximum Security Unit. Deputy Warden Anthony Jackson of the Wrightsville Complex served as the special speaker. Class 2016-C graduated on March 25 with 46 cadets. Warden Nurzuhal Faust was the special speaker. Jayveon Sessoms of the East Arkansas Unit was the winner of the Willis H. Sargent Award.

In-Service Division - As part of our *Regional Training Program*, Academy staff traveled to Mississippi County Work Release on March 3 to conduct an Emergency Preparedness class and a coping with stress course. This allowed several staff to attend without extensive travel and a possibility of overtime.

The revised FTO-Field Training Officer Class was scheduled for the March 8 and March 29. This course is designed for staff that will work side by side with cadets and train them on how to accomplish their jobs. The FTO program is steered using the FTO Manual which encompassed the Mockingbird Program. This means using our best staff to model for our new staff. Components of the training focus

on teaching and retaining the employee.

In order to better prepare Mental Health staff to navigate through the prison, three dates were set in March for the self-defense and staff survival class. Both are a low impact courses designed to show non-security staff they have an active role in defending themselves against physical harm. After a discussion of Departmental policy concerning use of force, other factors were studied. They learned about aggressive behaviors and how to avoid and evade problematic situations. Staff also learned how to navigate through not only general population, but to enter and travel through segregated areas, including punitive segregation, with more confidence.

eCADEMY

During the month of March, 533 ADC employees completed a total of 6,747.5 hours of eCADEMY training. Approximately 11% of ADC employees completed at least one course during that time frame, for an average of 1.45 hours per staff member.

HEALTH/CORRECTIONAL PROGRAMS

Sex Offender Treatment Programs:

	Slots	Completed	Removed	Clients
RSVP	238	46	6	237
SOFT	30	0	0	10
Total	268	46	6	247

There are 768 males on the waiting list for RSVP and 25 females on the waiting list for SOFT within five years of their TE date and of those 61 are mandated by the Parole Board. The average time on the waiting list from request is three to six months for stipulated participants. The total on the waiting list, including those not currently within the identified time frame, is 1,582 males and 32 females. We have one **PREA** inmate in the program at this time.

Therapeutic Community:

	Slots	Completed	Removed	Clients
Tucker	129*	9	8	131
Wrtsville	45*	8	1	46
McPhrsn	50*	5	3	55
Total	224	22	12	232

There are 158 males and 15 females on the waiting list within 18 months of their release date and of those 16 are mandated by the Parole Board. The average time on the waiting list from request is 18 days. The total on the waiting list, including those not currently within the identified time frame, is 461 males and 44 females.

*Denotes transitional beds available at this treatment program.

Tucker TC has 129 client slots and seven peer counselor slots.

S.A.T.P.:

	Slots	Completed	Removed	Clients
Grimes	50*	14	2	53
McPh	100*	18	8	105
MSU	3	0	0	3
RLW/CF	188*	28	11	183
Tucker	43*	13	4	45
Varner	44	1	3	49
Wrightsville	135*	18	12	144
Total	563	92	45	582

There are 2,072 males and 377 females on the waiting list within 18 months of their release date and of those 35 are mandated by the Parole Board. The average time on the waiting list from request is 18 days. The total on the waiting list including those not currently within the identified time frame is 3,021 males and 518 females.

*Denotes transitional beds available at this treatment program.

R.P.U.:

The Residential Program Unit at Ouachita had seven admissions and two discharges in March for an end-of-month count of 69.

McPherson Mental Health Residential Program:

There were four admissions and seven were discharged in March for an end-of-month count of 39.

Habilitation Program:

The Habilitation Program at the Ouachita River Correctional Unit provided treatment services to 39 inmates during March. There was one admission and one discharge for an end-of-month count of 38.

Staffing:

The following Mental Health Services and SATP positions were vacant in February and March.

	February	March
Psychologists	7	7
Social Workers	8	10
Advisors	2	2
Substance Abuse Program Leaders	5	2
Admin Specialist/Analyst	3	2

ACCREDITATION

The Pine Bluff Complex went through the reaccreditation audit March 8-10; scores were 100% mandatory and 100% non-mandatory.

ACA Internal Audits Completed:

March 1-4 Pine Bluff Complex audit prep
 March 7-10 Pine Bluff Complex Audit
 March 15 Tucker Unit File Prep
 March 16 TRCC audit prep
 March 28 NWARWC audit prep

March 29-31 Industry audit prep

Fire/Safety and Sanitation independent audits conducted by the Fire and Sanitation Coordinator:

March 1-10 Pine Bluff Complex Audit
 March 16 NWARWC Annual Independent Audit
 March 17 Wrightsville Industry Independent Audit
 March 18 TRCC Independent Audit and File Review
 March 22 Newport Industry Audit
 March 23 Wrightsville ACA File Review
 March 25 Quarterly Fire/Safety & Tool Control Officer Meeting
 March 28 Industry File Review
 March 30 NWARWC Follow Up Audit and File Review
 March 31 Industry ACA Files

CHAPLAINCY SERVICES

Benton Work Release

On March 1 and March 8, Financial Peace University classes were held. Forty-four (44) inmates attended and 17 received completion certificates.

On March 5 and March 12, the "Courageous" Bible Study was held. Thirty-four (34) inmates attended with 20 receiving certificates.

Christian Activity Night was held on March 26. Forty-five (45) inmates attended and played NCAA Tournament Bible Trivia. House of Refuge Prison Ministry from Jacksonville led a worship service on March 19. Thirty (30) inmates attended.

On March 29, the movie "Woodlawn" was shown to 45 inmates.

Cummins Unit

The IBLP Basic Seminar was held on March 15-17. Chaplain John Paige was the trainer for the three-day seminar. Seventy-two (72) inmates participated.

Grimes Unit

"Love Without End" praise and worship ministry was initiated.

On March 16-17 the Unit facilitated training for six inmates in the Laubach Literacy tutor training by Heather Powell of the Arkansas Literacy Council.

Maximum Security Unit

IBLP volunteers led the Basic Seminar course on March 15-17. Thirty (30) inmates completed the seminar.

On March 23, a graduation ceremony was held for the Compassionate Communications Class. Thirty-four (34) inmates graduated and three (3) volunteers facilitated the graduation ceremony.

McPherson Unit

On March 4, Chaplaincy hosted a missionary from Kazakhstan. One hundred forty (140) inmates attended the service they led. An Easter Cantata was held March 24- 25. One (1) chaplain and five (5) volunteers were involved. Two-hundred-seventy (270) inmates participated.

North Central Unit

On March 3, the Gospel Echoes Prison Concert was led by seven (7) volunteers with 140 inmates attending.

On March 9, Calvary Bible School Choir brought 75 volunteers to the Unit and 94 inmates attended the event.

On March 23, a Jehovah's Witness Memorial Service was led by three volunteers with 15 inmates participating.

An Easter Sunrise Service was held on March 27. One-hundred-four inmates attended.

Pine Bluff Unit

The Christian Motorcycle Association held a revival on March 11-13. Nine (9) volunteers gave 72 hours of service in the Unit and 128 inmates participated in the services they held.

RLW

The Christian Motorcycle Association held revival services March 11-12. Seven (7) volunteers logged 68 hours at RLW. One-hundred-nineteen (119) inmates participated in the services they held.

ORCU

On the March 5, the Gideons came to the Unit to distribute Bibles and visit with inmates. One-thousand-five-hundred-fifty (1,550) inmates were engaged.

Kairos #18 took place on the March 10-13. Twenty-eight (28) inmates went through the event.

Tucker Unit

On March 28-29, Heather Powell of the Arkansas Literacy Council trained seven (7) inmates to be literacy tutors.

Preparing for Success: March 2016

	Slots	Completed	Discharged	End Count
McPherson	15	1	0	11
Ester-4 BKS	50	2	0	59
Ester-5 BKS	50	4	5	59
Total	115	7	5	129

There are 648 males and 66 females on the waiting list within 42 months of their release date and of those, six males are mandated by the Parole Board. The average time on the waiting list is about three months. The total on the waiting list, including those not currently within the identified time frame, is 723 males and 93 females.

VOLUNTEER SERVICES

Volunteer Services: The total number of volunteer hours for the month of March:

Unit	Hours
Intern Hours	16
Hawkins	208
MCWRC	16
NCU	2
ORCU	36
RLW	38
Pine Bluff	12
Tucker	2
WSU	294
PAWS	20
Religious Volunteer-all Units	6938
TOTAL	7582

ADDITIONAL PROGRAM INFORMATION**Self-study Classes:**

	# of Participants	# Completed	Waiting List
Anger Management	425	333	1,610
Thinking Errors	404	335	2,682
SAE	188	34	699
Communication Skills	138	82	1,367
DV	197	106	964
Victims of DV	0	0	76
Stress Management	181	113	1,601
Parenting	168	123	1,442

SAE=Substance Abuse Education DV=Domestic Violence
Victims of DV=Victims of Domestic Violence

Suicide:

There were 86 suicidal threats, gestures or low/moderate risk attempts during March. There were two serious attempts with none resulting in death.

Outpatient:

There were 2,224 inmates on the mental health medical log at the beginning of March. Mental Health conducted the following contacts during March:

Case management contacts	2,354
Requests for interviews	6,521
Testing	4
Intakes	1014
Unit requests	1,360
Counseling (with treatment plans)	196
Pre-lock up reviews	453
Routine seg reviews	187
Seg rounds	12,065
PREA evaluations	43
Routine follow-up	219
834 requests	42

County Mental Health Requests:

During March there were 82 requests of a mental health nature received. Fourteen inmates were fast tracked to ADC.

Monetary Sanctions:

Sanction reimbursements for February were \$39,700.

County Medical Health Requests:

During March, there were 344 requests of a medical nature received and 10 were fast tracked to ADC.

Deaths:

There were five inmate deaths during the month of March; four bodies were claimed, one was cremated.

CCS:

See attachment for CCS's report regarding outside beds and emergency room visits.

Medical Grievances:

In March, there were a total of 331 appeals of medical grievances received and 304 appeals were answered. Thirty-four of those were found to be with merit and seven were with merit but resolved.

SEX OFFENDER ASSESSMENT**Assessments Completed:**

Risk Level	March	Sept. 1999-March 31, 2016
Level 1	1	1,148
Level 2	48	6,098
Level 3	22	5,989
Level 4	7	562
Default 3	2	**
Total	80	13,797

* Default Level 3's are included in the total number of Level 3's to date.

ACIC Numbers:

The total number of sex offenders registered from Sept. 1, 1999 to March 31, 2016:

In Compliance	7,289
Delinquent (Did not return address on time)	872
Confined	2,856
Out of State	2,914
Address Unknown (absconded)	183
Deceased	983
Deported	163
Incapacitated	66
Out of USA	4
Total	15,330

PAWS IN PRISON

Currently Enrolled in Training:

Max	8
Tucker	9
Hawkins	4
RLW	5
ORCU	9
NCU	8
Total	43

Completed Training:

March 2016	27
YTD 2016	69
Since Inception Dec. 2011	728
Dogs Currently in foster: (Graduated but not adopted)	4

CONSTRUCTION**CONSTRUCTION PERSONNEL UPDATE:****PROJECT UPDATES****Barbara Ester Unit (Diagnostic):**

The renovation of the barracks and re-roofing the Unit is continuing along with purchasing material, installing new metal ceilings, and working on plumbing and electrical. The renovations to Phase 1 and 2 are being completed. The asbestos abatement for phase 3 is complete. Demolition is also continuing for phase 3. We are working on dirt work for classrooms at PBU, and we are waiting for State Purchasing to put metal buildings out for bid.

Cummins Unit:

Work is continuing on roof repairs and repairs to free line residences. Gravel is being hauled from the Malvern pit to the road at the wastewater plant as the weather permits.

Cummins Poultry:

The new generator has been installed.

Delta Unit:

Work is continuing on the storm damage.

East Arkansas Regional Unit:

Work continues on the new firing range, with the concrete work finished, and the gravel road work will continue as it dries out. Metal roofs are being installed on State trailers as well as underpinning. Fiber optic wire and conduit have been run for the building.

HDRS Building:

Industry offices moved to the Pine Bluff complex from Admin East.

Ouachita River Correctional Unit:

Gravel operations are continuing. A request has been submitted to build the Chapel. We have started the dirt work and are pricing material.

Mississippi County:

The doors and windows that were rusted in the barracks are being replaced.

Springdale:

The Unit is getting ready for the ACA audit.

Tucker Maximum Security Unit:

Repairs to the boiler room equipment are being made.

Position and Count	Status
Project Supervisors / 2	Approved
Administrative Specialist / 1	Pending
CO I / 2	Pending (1) Approved (1)
Sergeant / 1	Approved
Project Specialist / 1	Pending
Construction Coordinator / 1	Open
Engineer / 1	On hold
Assistant Maintenance Supervisor	Open (EARU)
Maintenance Technician / 6	3 Reposted (2 at EARU and 1 at Wrightsville) Pending (3)

REGIONAL MAINTENANCE HOURS

<u>Unit</u>	<u>Monthly Hours</u>
Benton	8,701
Delta Regional	4,136
East Arkansas Regional	4,414
Grimes	4,494
McPherson	3,132
Max Boot Camp	2,528
MCWRC	1,688
North Central	9,123
Ouachita River	5,824
Randall Williams	3,472
TRCC	2,575
Varner	3,336
Wrightsville	2,904
Wrightsville Satellite	4,160
Total	60,487

WORK RELEASE RENT REPORT

<u>Unit</u>	<u>Monthly Income</u>
Benton	\$87,244
Pine Bluff Reentry	\$27,353
Pine Bluff	\$386,09
NWAWRC	\$51,510
MSCOWRC	\$32,249
TRCC	\$37,536
Total	\$274,501

[illegible][illegible]

INMATE INSTITUTIONAL GRIEVANCE APPEAL REPORT

	Received	Rejected	Processed W/O Merit	Processed W/ Merit
Benton Work Release	0	0	0	0
Bowie County Texas Correctional Facility	44	7	33	0
Cummins Unit	18	19	17	0
Cummins Modular Unit	2	0	5	0
Delta Regional Unit	14	2	17	0
Ester Unit	6	3	5	0
East Arkansas Regional Unit	15	4	32	2
East Arkansas Regional Maximum Unit	58	4	63	0
Grimes Unit	27	17	27	0
Maximum Security Unit	70	14	86	1
McPherson Unit	10	13	12	0
McPherson Mental Health Residential Program Unit	1	0	1	0
Mississippi County Work Release Center	2	0	0	0
Northwest Arkansas Work Release Center	0	0	0	0
North Central Unit	35	5	26	0
Ouachita River Correctional Unit	32	7	20	0
ORCU Hospital	0	0	0	0
ORCU New Commitment	0	0	0	0
ORCU Mental Health Residential Program Unit	0	0	1	0
Pine Bluff Unit	2	2	2	0
Pine Bluff Re-Entry	1	0		0
Randall L. Williams Correctional Facility	1	3	5	0
Texarkana Regional Correctional Center	0	0	0	0
Tucker Unit	25	9	21	1
Varner Super Max	116	27	113	0
Varner Unit	27	7	28	0
Wrightsville Unit	3	4	3	1
Wrightsville Satelite Unit	0	0	0	0
Hawkins Center	18	7	2	0
Hawkins for Males	1	0	0	0
Hawkins SPU	0	0	0	0
Total	530	154	519	5

MONTHLY POPULATION AVERAGES

	3/1	3/2	3/3	3/4	3/7	3/8	3/9	3/10	3/11	3/14	3/15	3/16	3/17	3/18	3/21	3/22	3/23	3/24	3/25	3/28	3/29	3/30	3/31				
Unit/Center																								AVG			
Benton	337	338	339	336	334	333	332	332	330	337	337	335	335	335	332	331	336	329	326	327	329	327	325	333			
Cummins	1,932	1,929	1,918	1,921	1,916	1,915	1,909	1,905	1,902	1,898	1,913	1,910	1,913	1,943	1,950	1,947	1,951	1,947	1,947	1,947	1,947	1,944	1,937	1,928			
Delta	618	613	626	623	623	621	617	621	616	621	621	617	617	627	621	621	618	616	621	620	619	613	609	619			
E AR Reg	1,677	1,685	1,691	1,685	1,688	1,692	1,685	1,688	1,685	1,686	1,688	1,682	1,682	1,697	1,687	1,686	1,683	1,685	1,687	1,686	1,685	1,685	1,684	1,686			
Ester	355	368	367	361	359	359	359	358	362	361	357	358	359	358	361	371	367	365	366	363	362	369	369	362			
Grimes	1,074	1,073	1,058	1,058	1,067	1,058	1,060	1,054	1,053	1,061	1,072	1,071	1,080	1,080	1,077	1,077	1,077	1,069	1,070	1,072	1,071	1,079	1,083	1,069			
Max Sec	663	665	666	666	669	673	673	673	675	674	666	665	670	672	673	673	674	674	672	672	672	675	675	671			
McPherson	1,015	1,009	1,007	1,006	1,013	998	998	1,005	992	994	999	990	987	976	970	979	976	977	976	986	987	984	983	992			
MCW/RC	143	143	142	142	142	142	142	142	141	141	140	140	140	139	139	137	137	137	138	138	138	138	138	140			
N Central	826	836	833	838	835	833	834	828	820	824	832	831	832	834	831	830	826	833	832	835	831	837	832	831			
NWAW/RC	99	99	100	100	100	100	100	100	99	99	98	99	99	100	100	100	100	99	99	99	96	96	96	99			
Quachita River	1,802	1,790	1,798	1,799	1,784	1,784	1,796	1,795	1,775	1,770	1,786	1,782	1,789	1,790	1,795	1,802	1,790	1,802	1,776	1,793	1,795	1,790	1,799	1,791			
andall L Williar	559	558	557	559	555	559	557	558	556	552	554	563	564	560	559	561	561	561	557	556	556	558	559	558			
Pine Bluff	436	436	435	430	437	436	434	435	436	438	438	436	430	430	424	430	429	425	430	431	428	432	431	432			
PB Reentry	54	54	54	53	53	53	54	54	54	54	54	54	54	54	54	54	54	54	54	54	54	54	53	54			
TRCC	128	125	125	127	127	127	126	126	126	126	126	126	128	128	128	128	128	128	128	128	128	128	128	127			
Tucker	1,019	1,020	1,022	1,012	1,019	1,018	1,015	1,015	1,012	1,011	1,020	1,019	1,022	1,022	1,022	1,022	1,022	1,026	1,018	1,013	1,016	1,011	1,010	1,018			
Varner	1,737	1,738	1,741	1,742	1,743	1,743	1,740	1,736	1,731	1,730	1,729	1,736	1,739	1,741	1,737	1,731	1,740	1,750	1,748	1,747	1,750	1,746	1,740	1,740			
Wrightsville	1,495	1,498	1,490	1,493	1,491	1,490	1,485	1,479	1,482	1,485	1,484	1,487	1,492	1,484	1,485	1,478	1,481	1,481	1,478	1,483	1,484	1,486	1,485	1,486			
Total ADC	15,969	15,977	15,969	15,951	15,955	15,934	15,916	15,904	15,847	15,862	15,914	15,901	15,932	15,970	15,945	15,958	15,950	15,959	15,923	15,950	15,948	15,952	15,936	15,936	15936		
ALETA	20	20	20	20	20	20	20	20	20	20	20	20	20	20	20	20	20	20	20	20	20	20	20	20			
Ar State Police	60	60	62	62	62	62	62	62	62	58	58	58	59	59	59	59	59	59	61	61	61	61	62	60			
Co Jail / M	956	932	936	938	933	960	972	995	1,026	990	950	967	954	908	896	900	917	885	892	875	887	890	916	934			
Co Jail / F	4	4	10	9	7	11	9	5	6	9	10	7	8	9	12	8	1	3	11	4	6	2	8	7			
Total Co Jail BK	960	936	946	947	940	971	981	1,000	1,032	999	960	974	962	917	908	908	918	888	903	879	893	892	924	941			
Bowie CO., TX	335	336	335	335	335	334	334	335	333	336	332	332	336	336	336	336	336	336	336	336	336	336	334	335			
309M	245	243	237	236	235	235	233	232	231	234	236	237	237	237	241	243	242	243	243	243	241	241	240	238			
309F	36	36	35	35	35	35	35	34	34	34	34	34	34	34	34	34	34	34	34	34	34	34	34	34			
Total Act 309	281	279	272	271	270	270	268	265	265	268	270	271	271	271	275	277	275	277	277	277	275	275	274	273			
Total Non ADC	1,656	1,631	1,635	1,635	1,627	1,657	1,665	1,683	1,712	1,681	1,640	1,655	1,648	1,603	1,598	1,600	1,609	1,580	1,597	1,573	1,585	1,584	1,614	1,629			
Total	17,625	17,608	17,604	17,586	17,582	17,591	17,581	17,587	17,559	17,543	17,554	17,556	17,580	17,573	17,543	17,558	17,559	17,539	17,520	17,523	17,533	17,536	17,550	17,565	17565		
																								0			
	1	1	1	1	1	1	1	1	1	1	1	1	1	1	1	1	1	1	1	1	1	1	1	23			

ADC County Jail Backup FY2016

DAY	Jul-15	Aug-15	Sep-15	Oct-15	Nov-15	Dec-15	Jan-16	Feb-16	Mar-16
1	2,674	2,556	2,276	1,973	1,801	1,591	1,189	1,132	960
2	2,615	2,556	2,274	1,979	1,829	1,570	1,189	1,155	936
3	2,618	2,558	2,267	1,979	1,851	1,530	1,189	1,180	946
4	2,618	2,572	2,236	1,979	1,862	1,487	1,189	1,201	947
5	2,618	2,592	2,236	1,938	1,869	1,487	1,155	1,213	947
6	2,618	2,598	2,236	1,899	1,887	1,487	1,142	1,213	947
7	2,638	2,615	2,180	1,900	1,887	1,421	1,132	1,213	940
8	2,669	2,615	2,180	1,895	1,887	1,390	1,100	1,187	971
9	2,686	2,615	2,174	1,895	1,848	1,378	1,100	1,185	981
10	2,677	2,621	2,181	1,895	1,839	1,370	1,100	1,216	1000
11	2,677	2,625	2,147	1,895	1,854	1,341	1,042	1,226	1032
12	2,677	2,597	2,147	1,895	1,854	1,341	1,031	1,219	1032
13	2,660	2,606	2,147	1,879	1,826	1,341	1,010	1,219	1032
14	2,635	2,607	2,116	1,897	1,826	1,323	1,005	1,219	999
15	2,614	2,607	2,100	1,914	1,826	1,262	992	1,229	960
16	2,587	2,607	2,074	1,886	1,819	1,276	992	1,229	974
17	2,576	2,614	2,067	1,886	1,826	1,279	992	1,207	962
18	2,576	2,651	2,034	1,886	1,826	1,234	1,007	1,239	917
19	2,576	2,666	2,034	1,862	1,817	1,234	1,007	1,241	917
20	2,541	2,705	2,034	1,872	1,805	1,234	1,027	1,241	917
21	2,550	2,687	2,031	1,856	1,805	1,207	1,044	1,241	908
22	2,546	2,687	2,023	1,853	1,805	1,201	1,072	1,243	908
23	2,542	2,687	2,019	1,843	1,820	1,208	1,072	1,189	918
24	2,550	2,685	2,034	1,843	1,780	1,241	1,072	1,155	888
25	2,550	2,605	2,023	1,843	1,728	1,241	1,091	1,090	903
26	2,550	2,553	2,023	1,821	1,634	1,241	1,088	1,043	903
27	2,533	2,453	2,023	1,814	1,634	1,241	1,110	1,043	903
28	2,535	2,309	2,027	1,815	1,634	1,241	1,139	1,043	879
29	2,525	2,309	1,975	1,815	1,634	1,244	1,138	959	893
30	2,549	2,309	1,958	1,801	1,634	1,212	1,138		892
31	2,556	2,272		1,801		1,200	1,138		924
Average	2,598	2,572	2,109	1,881	1,798	1,324	1,087	1,178	943

Notes: Totals do not include 309 Contracts in County Jails (maximum of 336)

ADMISSIONS AND RELEASES

<u>Admissions</u>	<u>Male</u>	<u>Female</u>	<u>Total</u>
Asian	3	1	4
Black	285	23	308
Hispanic	29	0	29
Nat. Amer.	4	0	4
Hawaiian/Pacific Isl	0	0	0
White	499	88	587
Other	1	0	1
Unknown	0	0	0
Total	821	112	933
<u>Releases</u>	<u>Male</u>	<u>Female</u>	<u>Total</u>
Asian	2	0	2
Black	310	24	334
Hispanic	24	2	26
Nat. Amer.	1	1	2
Hawaiian/Pacific Isl	0	0	0
White	499	120	619
Other	0	0	0
Total	836	147	983

ARKANSAS DEPARTMENT OF CORRECTION

INMATE POPULATION GROWTH 2000-2022

Mo.	2000	2001	2002	2003	2004	2005	2006	2007	2008	2009	2010	2011	2012	2013	2014	2015	2016
Jan.	11,984	11,908	12,402	13,015	13,105	13,595	13,481	13,839	14,518	14,796	15,334	16,312	15,134	14,815	17,481	18,142	17,785
Feb.	12,169	12,022	12,529	13,054	13,166	13,783	13,633	14,012	14,603	14,883	15,374	16,209	14,990	15,008	17,438	18,082	17,625
March	12,006	12,033	12,299	13,108	13,088	13,418	13,534	13,772	14,580	14,843	15,290	16,095	14,964	14,665	17,395	18,233	17,573
April	12,069	12,167	12,465	13,213	13,323	13,469	13,554	13,851	14,769	14,937	15,570	16,172	15,124	14,850	17,604	18,703	
May	12,109	12,384	12,558	13,463	13,556	13,528	13,711	14,146	14,880	15,146	15,694	16,062	15,132	15,074	17,593	18,693	
June	12,005	12,108	12,439	13,418	13,389	13,251	13,430	13,915	14,700	15,025	15,564	15,554	14,832	14,825	17,340	18,813	
July	12,030	12,190	12,622	13,509	13,528	13,286	13,560	14,082	14,868	15,195	15,807	15,519	14,879	15,379	17,522	18,870	
August	12,087	12,371	12,815	13,565	13,632	13,419	13,646	14,224	15,100	15,385	15,829	15,240	14,675	16,103	17,549	18,806	
September	11,983	12,289	12,774	13,341	13,516	13,237	13,652	14,217	14,850	15,285	16,025	15,172	14,724	16,412	17,605	18,549	
October	12,119	12,348	12,942	13,341	13,584	13,363	13,775	14,349	14,836	15,381	16,311	15,271	14,856	16,993	17,880	18,430	
November	12,094	12,408	13,162	13,408	13,706	13,587	13,913	14,437	15,025	15,340	16,460	15,205	14,625	17,168	17,848	17,981	
December	11,856	12,333	12,845	13,106	13,470	13,338	13,728	14,315	14,716	15,199	16,204	15,062	14,654	17,235	17,874	17,707	
Net Ann. Inc.	29	477	512	261	364	-132	390	587	401	483	1,005	-1,142	-408	2,581	639	-167	-134
Avg. Mo. Inc.	2	40	43	22	30	-11	33	49	33	40	84	-95	-34	215	53	-14	-45

Population is total jurisdictional count at end of each month. Population at end of month December 1999 was 11,827.
Average monthly population increase for past fifteen years 2001 - 2015 is 33
Average monthly population increase for past ten years Jan.2006 - Dec 2015 is 36
Average monthly population increase for past five years 2011 - 2015 is 25

Projected at Growth of 33 per Month																
	2008	2009	2010	2011	2012	2013	2014	2015	2016	2017	2018	2019	2020	2021	2022	2023
Mo.	Actual	Actual	Actual	Actual	Actual	Actual	Actual	Actual	Actual/ Proj.	Proj.	Proj.	Proj.	Proj.	Proj.	Proj.	Proj.
January	14,518	14,796	15,334	16,312	15,134	14,815	17,481	18,142	17,785	17,903	18,299	18,695	19,091	19,487	19,883	20,279
February	14,603	14,883	15,374	16,209	14,990	15,008	17,438	18,082	17,625	17,936	18,332	18,728	19,124	19,520	19,916	20,312
March	14,580	14,843	15,290	16,095	14,964	14,665	17,395	18,233	17,573	17,969	18,365	18,761	19,157	19,553	19,949	20,345
April	14,769	14,937	15,570	16,172	15,124	14,850	17,604	18,703	17,606	18,002	18,398	18,794	19,190	19,586	19,982	20,378
May	14,880	15,146	15,694	16,062	15,132	15,074	17,593	18,693	17,639	18,035	18,431	18,827	19,223	19,619	20,015	20,411
June	14,700	15,025	15,564	15,554	14,832	14,825	17,340	18,813	17,672	18,068	18,464	18,860	19,256	19,652	20,048	20,444
July	14,868	15,195	15,807	15,519	14,879	15,379	17,522	18,870	17,705	18,101	18,497	18,893	19,289	19,685	20,081	20,477
August	15,100	15,385	15,829	15,240	14,675	16,103	17,549	18,806	17,738	18,134	18,530	18,926	19,322	19,718	20,114	20,510
September	14,850	15,285	16,025	15,172	14,724	16,412	17,605	18,549	17,771	18,167	18,563	18,959	19,355	19,751	20,147	20,543
October	14,836	15,381	16,311	15,271	14,856	16,993	17,880	18,430	17,804	18,200	18,596	18,992	19,388	19,784	20,180	20,576
November	15,025	15,340	16,460	15,205	14,625	17,168	17,848	17,981	17,837	18,233	18,629	19,025	19,421	19,817	20,213	20,609
December	14,716	15,199	16,204	15,062	14,654	17,235	17,874	17,707	17,870	18,266	18,662	19,058	19,454	19,850	20,246	20,642
Net Ann. Inc.	401	483	1,005	-1,142	-408	2,581	639	-167	163	396	396	396	396	396	396	396
Ave. Mo. Inc.	33	40	84	-95	-34	215	53	-14	14	33	33	33	33	33	33	33

Data as of 04/04/16

Telephone Projects

* FY2015 Carry forward to FY2016 Project Budget = (FY2015 Actual Spending + FY2016 Approved Budget Amount.)

CHAPLAINCY

Monthly Report for: Feb 2016	BENTON	CUMMINS	DELTA REGIONAL	EAST ARKANSAS	EAST ARKANSAS MAX	GRIMES	HAWKINS	MAXIMUM SECURITY	MCPHERSON	NORTH CENTRAL	OUACHITA RIVER	PINE BLUFF	RANDALL L. WILLIAM	TUCKER	VARNER	VARNER MAX	WRIGHTSVILLE	PTF	TOTAL
Services Chaplains Oversaw	2	12		3	0	33	3	8	13	5	17	2	13	10	6	6	17	0	150
Christian																			
Population	8	11	11	2	0	29	3	8	11	5	16	1	13	7	2	2	13	0	142
Segregation	0	0	0	0	0	0	0	0	0	0	0	0	0	1	2	2	0	0	5
Muslim																			
Population	0	1	4	1	0	4	0	0	2	0	1	1	0	2	1	1	4	0	22
Segregation	0	0	0	0	0	0	0	0	0	0	0	0	0	0	1	1	0	0	2
Volunteers in Charge																			
Protestant	17	52	10	51	8	26	6	29	40	76	44	18	7	10	3	8	19	4	428
Catholic	0	0	0	4	2	3	2	1	3	2	1	0	1	1	1	1	4	4	30
Muslim	0	2	0	0	0	0	0	2	0	0	3	0	1	1	0	0	0	0	9
Other	5	0	0	8	0	0	1	1	4	0	4	0	0	0	0	0	0	0	23
Baptism	0	2	0	24	0	12	0	1	22	1	4	0	3	14	0	0	0	0	83
Marriages	1	1	0	0	0	0	0	1	0	0	1	0	2	4	0	0	1	0	11
Distributed by Chaplains																			
Greeting Cards	30	27	0	0	0	38	0	350	540	48	3	265	30	10	162	201	0	100	1804
Bibles, Quran, Torah, Etc.	45	34	6	8	5	11	6	11	119	18	165	12	15	5	61	18	17	0	556
Study Course	10	72	0	2	2	0	0	105	0	0	15	11	10	1	17	7	4	0	256
Writing Supplies	10	47	0	0	0	12	510	750	0	0	200	0	25	4	0	0	0	300	1858
Literature	150	1,230	95	71	17	512	2	650	136	465	744	312	30	47	1324	72	300	200	6357
Chaplain's Visits																			
Barracks - How Many Visits	57	132	8	22	12	160	24	165	85	66	118	81	48	12	16	31	35	0	1072
Approximate Hours Spent in Barracks	31	67	4	30	8	16	47	41	42	50	18	38	86	36	5	17	55	0	591
Office (How many Inmates)	65	81	150	70	10	240	77	33	92	56	92	135	102	120	76	0	57	0	1456
How Many Visits Chaplain Made																			
Hospital	0	0	0	0	1	0	0	0	0	1	39	0	4	0	1	0	0	0	46
Infirmery/Sick Call	0	4	5	7	2	21	3	4	4	4	2	4	10	0	1	0	0	0	71
Office	0	13	1	0	0	30	0	33	8	0	5	12	8	50	7	0	0	0	167
Admin Seg	0	9	0	46	41	0	0	33	8	0	20	0	0	0	0	0	0	0	157
Segregation	0	0	5	13	2	13	1	0	8	0	10	4	10	2	0	20	4	0	92
Punitive	0	7	0	10	8	0	0	6	8	3	26	4	10	0	0	0	3	0	85
PC	0	0	0	12	0	0	0	0	8	0	0	0	0	0	0	0	0	0	20
Visitation Days	0	0	0	0	0	0	0	0	0	2	5	0	0	0	0	0	0	0	7
How Many Visits Volunteers Made																			
RCV	4	0	0	36	0	3	4	22	27	0	189	0	18	2	0	0	0	0	305
OCV	7	0	6	0	0	0	59	46	40	95	48	98	24	2	18	0	30	0	473
Spiritual Advisor	1	1	0	0	0	0	0	0	0	0	4	1	1	2	0	0	0	0	10
CRA	26	52	3	93	0	67	11	92	73	115	185	36	16	5	49	49	24	0	896
Total Volunteer Hours	99	115	18	285	0	251	200	485	377	519	1,854	487	118	50	431	42	62	0	5393
DENOMINATIONAL/VOLUNTEER CHAPLAIN HOURS	77	132	0	0	0	0	147	83	140	129	258	72	142	136	24	0	210	0	1550
Other Activities of Chaplain																			
Counseled Employees	12	5	0	5	0	24	2	3	1	3	62	14	9	8	2	0	6	0	156
Orientation Sessions	0	5	0	0	0	4	0	0	4	1	0	0	0	0	0	0	0	0	14
Free World Devotions	0	15	0	0	0	0	0	0	0	0	8	12	12	0	0	0	0	0	47
Spoke in Churches	4	14	8	26	0	20	0	3	0	0	13	12	12	4	0	0	0	0	116
Crisis Intervention Sessions	8	17	12	4	0	4	0	5	13	5	30	12	7	5	9	3	25	0	159
Marriage Counseling	3	4	0	0	0	0	0	1	2	1	1	0	0	1	1	0	0	0	14
Denominational Meeting	0	4	0	0	0	0	0	0	1	0	1	0	0	1	0	0	0	0	7
Chaplain's Meeting	0	1	1	1	0	0	0	1	1	1	3	1	1	5	11	0	4	0	31
Volunteer Training Session	2	0	0	1	0	3	0	0	0	0	0	0	0	0	0	0	0	0	6
Choir Trip	0	0	0	0	0	0	0	0	0	0	0	0	0	0	0	0	0	0	0
Staff Movement (Chaplain)																			
	0	0	0	0	0	0	0	1	0	0	0	0	0	1	0	0	0	0	2
Promotions (Chaplain)																			
	0	0	0	0	0	0	0	0	0	0	0	0	0	0	0	0	0	0	0
Interns																			
	0	0	0	0	0	0	0	0	0	0	0	0	0	0	0	0	0	0	0
PAL PROGRAM																			
# Enrolled at start of month	0	47	14	49	0	47	51	20	35	27	45	0	25	62	39	0	26	0	487
# Enrolled during the month	0	18	0	7	0	9	8	2	13	0	3	0	7	13	5	0	7	0	92
Removed from the program																			
# Paroled	0	1	0	0	0	1	3	0	8	2	0	0	4	2	1	0	3	0	25
# Completed	0	9	0	6	0	3	0	1	3	2	2	0	2	0	2	0	1	0	31
# Withdrew	0	4	1	1	0	0	0	0	0	0	0	0	1	1	0	1	0	9	
# Removed	0	2	0	0	0	2	3	0	1	1	3	0	0	12	1	0	1	0	26
# Transferred	0	2	0	0	0	1	3	1	2	0	2	0	0	1	0	0	0	0	12
Total removed from program	0	18	1	7	0	2	9	2	14	5	3	0	6	16	5	0	6	0	103
# Enrolled at the end of the month	0	47	13	49	0	49	50	20	34	22	41	0	26	59	39	0	27	0	476
# Of volunteers																			
	0	27	3	53	0	29	14	11	33	6	12	0	6	7	2	0	4	0	207
Special Events:																			
	7	1	0	0		1		2	2	4	2	2	1	1			0	0	

Medical Grievance

Unit	Acknowledged/ Received	Rejected	Reviewed & Signed by Dep Director	With Merit	With Merit, but Resolved	% With Merit	Without Merit
Benton	0	0	0	0	0	0%	0
Boot Camp	0	0	0	0	0	0%	0
Bowie Co.	3	3	2	0	0	0%	2
CMU	2	1	1	0	0	0%	1
Cummins	14	5	16	0	1	6%	15
Delta	5	0	3	0	0	0%	3
EARU	22	5	43	6	1	16%	36
EARU Max	37	2	25	3	1	16%	21
Esther	3	0	0	0	0	0%	0
Grimes	16	0	14	1	1	14%	12
Hawkins	2	1	2	0	0	0%	2
McPherson	6	3	16	1	0	6%	15
MCWRC	0	0	0	0	0	0%	0
MSU	35	5	37	2	1	8%	34
North Central	14	0	18	0	0	0%	18
NWAWRC	0	0	0	0	0	0%	0
Ouachita	29	5	23	1	0	4%	22
Pine Bluff	0	2	0	0	0	0%	0
Randall Williams	4	0	2	0	0	0%	2
SNN	1	0	1	1	0	0%	0
TRCC	0	0	0	0	0	0%	0
Tucker	16	2	22	1	0	5%	21
Varner	37	4	27	0	1	0%	26
Varner S Max	70	6	45	17	0	38%	28
WRU	13	1	7	1	1	0%	5
WHM	2	1	0	0	0	0%	0
WWR	0	0	0	0	0	0%	0
TOTAL	331	46	304	34	7	13%	263

March STTG Unit Counts

Unit	Confirmed	Suspected	In	Out	Paroled	Removed	Ending Total
Benton	1	0	4	4	2	0	60
Cummins	1	0	29	20	23	0	462
Delta							
EARU							
Grimes	1	0	26	12	11	0	272
Hawkins	0	0	5	6	1	0	37
Mcpherson	2	2	1	1	3	1	61
Max	3	0	8	5	0	0	254
MCWR	0	0	3	5	0	0	39
NCU	0	0	30	13	20	0	190
NWAWR	1	0	0	1	0	0	19
ORCU	0	0	51	32	19	0	289
ORCU Intake	140	0	0	160	0	0	47
PB/Ester	0	0	54	26	8	0	189
RLW	0	0	30	16	4	0	138
TWR	0	0	3	1	0	0	32
Tucker							
Varner							
Wrightsville	0	0	55	20	17	0	215
Total	149	2	299	322	108	1	2304

STTG Incidents

STTG	Incidents	Total
STTG Incidents		6
STTG Suspected Incidents		1
Incidents Involving STTG		796
Incidents Involving STTG		238
Percent		29.90%

March STTG Counts by STTG Set

STTG Set	Benton	Cummins	Grimes	Hawkins	Mcpherson	Max	MCWR	NCU	NWAW	ORCU	Intake	PB	RLW	TWR	Wrightsville	Total
Asian	1	0	1	0	0	0	1	0	1	0	0	0	0	0	0	4
Bloods	10	87	49	4	7	60	3	29	3	49	6	30	23	8	41	409
Crips	8	76	26	3	8	30	2	28	0	42	3	27	10	3	38	304
Folk	11	155	94	10	13	82	7	49	6	94	15	57	50	13	53	709
Mexican	1	17	9	1	3	6	4	5	1	13	0	7	3	0	5	75
Motorcycle	0	3	2	0	1	0	0	0	1	0	0	0	0	0	0	7
Other	2	6	7	1	0	8	0	6	1	5	2	1	1	0	13	53
People	3	21	17	2	3	10	3	7	0	14	0	15	7	1	20	123
Unknown	0	6	3	1	3	0	0	9	0	10	3	5	4	3	7	54
W/S	12	30	21	11	13	17	7	28	3	19	6	21	16	4	16	224
NAE	7	18	14	1	7	6	3	8	1	10	3	12	6	0	3	99
WAR	3	33	15	2	2	19	4	11	1	22	5	6	12	0	17	152
AC	1	4	10	1	1	12	2	7	0	6	1	4	5	0	0	54
AB	1	6	4	0	0	4	3	3	2	4	3	4	1	0	2	37
Total	60	462	272	37	61	254	39	190	19	289	47	189	138	32	214	2304

ADC INPATIENT AND EMERGENCY ROOM UTILIZATION

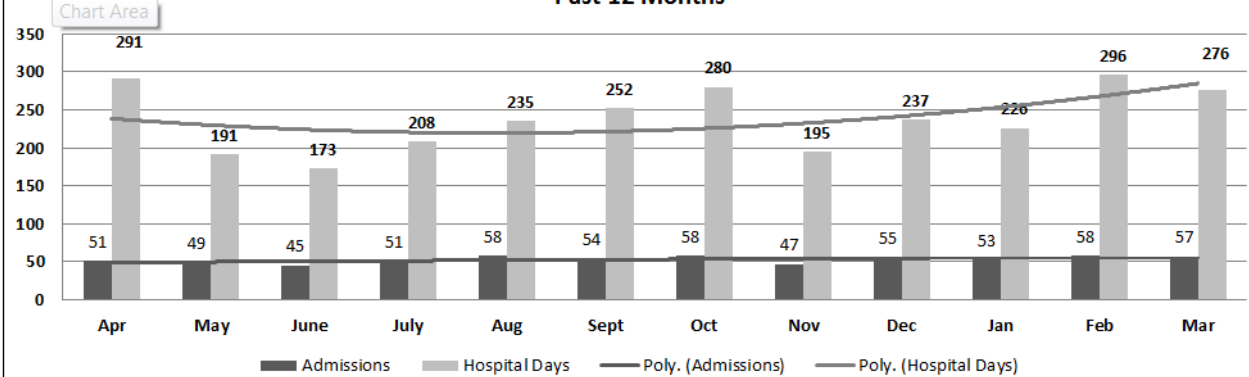
ADC Inpatient Statistics Past 12 Months

	2015										2016			
	Apr	May	June	July	Aug	Sept	Oct	Nov	Dec	Jan	Feb	Mar	Average	
Admissions	51	49	45	51	58	54	58	47	55	53	58	57	53.0	
Hospital Days	291	191	173	208	235	252	280	195	237	226	296	276	238.3	
Average Length of Stay	5.71	3.90	3.84	4.08	4.05	4.67	4.83	4.15	4.31	4.26	5.10	4.84	4.50	

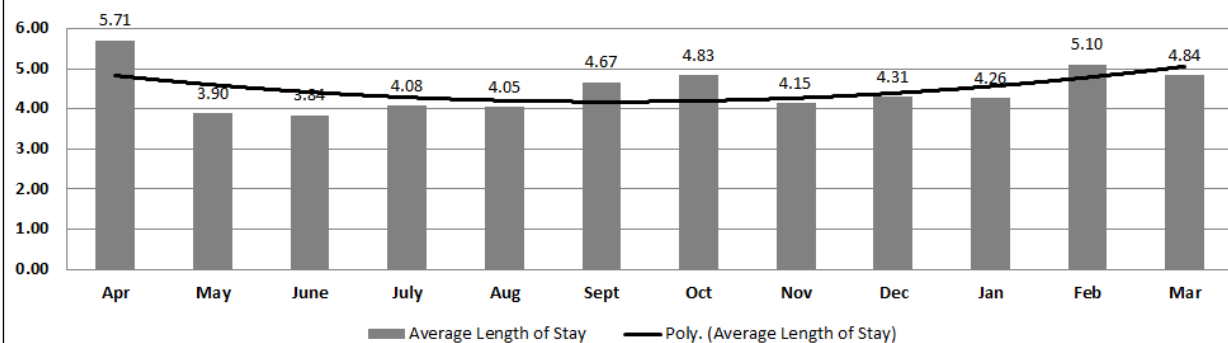
ADC ER Visits Past 12 Months

	2015									2016			Average
	Apr	May	June	July	Aug	Sept	Oct	Nov	Dec	Jan	Feb	Mar	
Emergency Room Visits	83	86	77	99	74	76	72	63	78	70	100	99	81.4

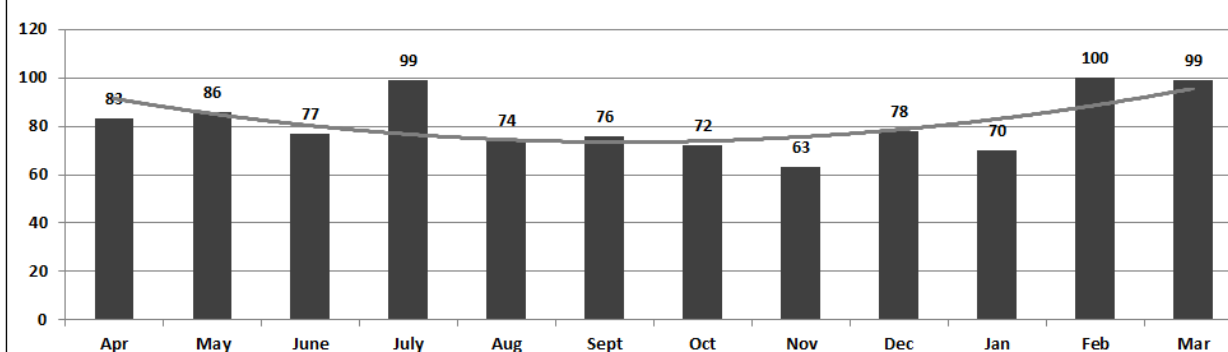
ADC Inpatient Utilization Past 12 Months



ADC Inpatient Average Length of Stay Past 12 Months



ADC Emergency Room Visits Past 12 Months



Monthly Purchasing Report/ Purchase Orders Over \$10,000

VENDOR	DESCRIPTION	LOCATION	PO#	AMOUNT	FUND
Four Rivers Software Systems Inc	Software Support	Admin East/Information Services	4501606272	\$16,532.25	Operational Budget
American Paper & Twine Co	Paper Towels	Central Warehouse	4501606556	\$11,039.62	Operational Budget
M J Kellner	Food Purchases	Central Warehouse	4501606549	\$124,032.00	Operational Budget
Robbins Sales Company Inc	Food Purchases	Central Warehouse	4501606538	\$81,852.96	Operational Budget
Shamrock Meats Inc	Ground Beef	Cummins Unit/Farm	4501606787	\$360,800.00	Operational Budget
W W Grainger Inc	Network Camera Equipment	Wrightsville Unit	4501606678	\$120,004.27	Telephone Funds - Camera
William R Hill & Co Inc	Food Purchases	Central Warehouse	4501606529	\$69,779.01	Operational Budget
Helena Chemical Company	Herbicide	Cummins Chemical Shed	4501606249	\$10,054.00	Operational Farm Budget
Greenway Equipment	Hay Baler	Cummins Unit/Farm	4501606220	\$41,402.39	Operational Farm Budget
AR Dept of Correction Industry	Inmate Clothing	Hawkins Unit	4501607216	\$17,932.32	Operational Budget
NESCO	Security Lights	Pine Bluff Unit	4501607390	\$11,050.83	Telephone Funds - Const
Shoe Corporation of Birmingham	Brogans	Tucker Unit/Industry	4501606144	\$10,748.40	Operational Industry Budget
Drew Farm Supply	Greenhouse Supplies	Cummins Unit/Farm	4501607258	\$10,578.00	Operational Farm Budget
Planter Cotton Oil Mill Inc	Cottonseed Feed	Cummins Unit/Farm	4501607405	\$20,160.00	Operational Farm Budget
The Concrete Works LLC	Cattle Feeder	Wrightsville Unit/Farm	4501607372	\$10,723.13	Operational Farm Budget
Green & Chapman Inc	Low Sulfur Red Diesel	Cummins Unit/Farm	4501605273	\$26,787.01	Operational Farm Budget
MFA Incorporated	Chemical Herbicide	Cummins Unit/Farm	4501603920	\$14,850.00	Operational Farm Budget
Tommys Flying Service Inc	Aerial Application	Tucker Unit/Farm	4501607257	\$12,800.00	Operational Farm Budget
MFA Incorporated	Chemical Herbicide	Tucker Unit/Farm	4501607357	\$83,386.20	Operational Farm Budget
Green Point AG LLC	Chemical Herbicide	Tucker Unit/Farm	4501607353	\$51,740.70	Operational Farm Budget
EDS Supply Co Inc	HVAC, Equipment, Parts	Ester Unit	4501607998	\$10,456.17	Operational Budget
I-CON Systems Inc	Plumbing Equipment	RLW Unit	4501607246	\$31,657.96	Telephone Funds - Const
Mississippi AG Company	Farm Equipment Parts	Cummins Unit/Farm	4501599160	\$12,937.65	Operational Farm Budget
Senstar-Stellar Inc	Repair Parts	Delta Unit	4501608910	\$24,790.33	Telephone Funds - Camera
Dell Marketing LP	Data Processing Supplies	Admin East/Information Services	4501609028	\$23,827.27	Operational Budget
Sysco Food Services of AR Inc	Food Purchases	Central Warehouse	4501609131	\$55,760.40	Operational Budget
US Foods Inc	Food Purchases	Central Warehouse	4501609125	\$25,848.00	Operational Budget
William R Hill & Co Inc	Food Purchases	Central Warehouse	4501609100	\$189,026.36	Operational Budget
Shoe Corporation of Birmingham	Brogans	Tucker Unit/Industry	4501608869	\$11,779.30	Operational Industry Budget
Tabb Textiles Co Inc	Fabric	Wrightsville ACI Warehouse	4501608674	\$46,500.00	Operational Industry Budget
Galls LLC	Uniforms	Training Academy	4501609630	\$14,348.36	Operational Budget
Abbott Supply Company Inc	Fence Material	Cummins Unit/Farm	4501608814	\$10,570.58	Operational Farm Budget
Gilbert AG Service Inc	Crop Seed	EARU/Farm	4501608855	\$117,964.17	Operational Farm Budget
Triple J Flying Service Inc	Aerial Application	Cummins Unit/Farm	4501598647	\$21,903.55	Operational Farm Budget
Razor Chemical Inc	Chemicals	Delta Regional Janitorial Factory	4501609847	\$13,157.70	Operational Industry Budget
Phoenix Trading	Soap	Central Warehouse	4501610462	\$14,487.00	Operational Budget
AR Dept of Correction Industry	Food Purchases	Central Warehouse	4501610455	\$11,970.50	Operational Budget
National Food Group	Food Purchases	Central Warehouse	4501610449	\$127,458.40	Operational Budget
Robbins Sales Company Inc	Food Purchases	Central Warehouse	4501610445	\$74,808.16	Operational Budget
Sysco Food Services of AR Inc	Food Purchases	Central Warehouse	4501610438	\$330,268.10	Operational Budget
US Foods Inc	Food Purchases	Central Warehouse	4501610435	\$39,039.50	Operational Budget
William R Hill & Co Inc	Food Purchases	Central Warehouse	4501610432	\$189,596.04	Operational Budget
PPG Architectural Finishes Inc	Paint Equipment	Ester Unit	4501610413	\$11,205.63	Ester Phase III Q95 Funds
Mid South Sales Inc	Unleaded Gas	Cummins Unit	4501609384	\$13,270.46	Operational Budget
Comfort Systems USA AR Inc	Storage Tanks	Ester Unit	4501610611	\$159,060.68	Const ADFA Ester II
Hy-Line North America LLC	Pullets	Cummins Unit/Farm	4501608835	\$44,720.00	Operational Farm Budget
Tommys Flying Service Inc	Aerial Application	Tucker Unit/Farm	4501610148	\$10,960.00	Operational Farm Budget
Frost Flying Service	Aerial Application	EARU/Farm	4501610107	\$15,750.00	Operational Farm Budget
White River Petroleum Co Inc	Unleaded Gas	Grimes Unit	4501610863	\$10,587.40	Operational Budget
Kronos Inc	Software Renewal	Admin East/Information Services	4501611985	\$18,516.50	Operational Budget
Sumner Group Inc	Printers	Admin East/Information Services	4501611863	\$24,161.47	Operational Budget
WW Grainger Inc	Radios	Varner Unit	4501611614	\$17,966.18	Operational Budget
Metro Builders & Restoration	Roofing Repair	Delta Unit	4501610869	\$143,668.87	Operational Budget
Showcase of Floors Inc	Tile	Admin East	4501612727	\$10,008.01	Operational Budget
Sysco Food Services of AR Inc	Food Purchases	Central Warehouse	4501612474	\$61,051.50	Operational Budget
William R Hill & Co Inc	Food Purchases	Central Warehouse	4501612458	\$203,634.21	Operational Budget
American Paper & Twine Co	Paper Towels	Central Warehouse	4501612448	\$33,742.07	Operational Budget
Delta Grow Seed Co Inc	Crop Seed	Tucker Unit/Farm	4501611111	\$41,310.00	Operational Farm Budget
D & H Poultry Service Inc	Vet Services	Cummins Unit/Farm	4501609513	\$18,828.00	Operational Farm Budget
North Arkansas Farm Supply Inc	Chemical Herbicide & Fungicide	North Central Unit/Farm	4501611776	\$11,324.72	Operational Farm Budget
Agvics Crop Consulting LLC	Crop Consulting	Cummins Unit/Farm	4501608893	\$28,728.00	Operational Farm Budget
Green Point AG LLC	Herbicide	EARU/Farm	4501611358	\$17,554.70	Operational Farm Budget
Miller Bowie Supply	Feed	Cummins Unit/Farm	4501609420	\$21,252.00	Operational Farm Budget
Green Point AG LLC	Fertilizer	Tucker Unit/Farm	4501610739	\$23,500.00	Operational Farm Budget
Jones Hydro Services	Well Repair	Tucker Unit	4501556043	\$55,524.35	Operational Budget
American Builders & Construction	Roofing Repair	Wrightsville Unit	4501613251	\$19,236.81	Telephone Funds - Const
Mississippi AG Company	Farm Equipment Parts	Cummins Unit/Farm	4501607375	\$21,322.13	Operational Farm Budget
JAG Textile Company	Fabric	Wrightsville ACI Warehouse	4501613005	\$66,500.00	Operational Industry Budget
Total for Purchases over \$10,000				\$3,607,792.28	
FIRM CONTRACTS OVER \$25,000.00					
VENDOR	DESCRIPTION	UNIT	Contract # P.O.#	PURCHASE AMOUNT	FUND
Perkins Fire Pro Inc	Fire Suppression System	Ester Unit	4501611008	\$41,133.20	Const ADFA Ester II
Total for Contracts				\$41,133.20	
EMERGENCY PURCHASE ORDERS OVER \$25,000.00					
Total EM Purchases				\$0.00	
Total Purchases				\$3,648,925.48	

Vacancies, Hires and Terminations

UNIT	VACANCIES	HIRES	TERMINATIONS
BENTON (CR05)	8	2	1
CENTRAL OFFICE (CR01, CR02, CR08 & CR22)	28	6	3
CHAPLAINCY	2	0	0
CONSTRUCTION (CR04)	13	3	1
CUMMINS (CR09)	77	8	7
DELTA (CR10)	8	3	2
EAST ARKANSAS (CR12)	59	16	17
ESTER (CR11)	16	3	3
FARM (CR29)	10	0	0
GRIMES (CR27)	17	9	9
INDUSTRY (CR07)	14	0	1
MAXIMUM SECURITY (CR14)	37	8	4
MCPHERSON (CR28)	25	4	4
MENTAL HEALTH	25	1	2
MISS COUNTY (CR15)	2	2	1
NORTH CENTRAL (CR16)	2	5	2
NORTHWEST ARK (CR17)	1	1	0
OUACHITA RIVER (CR30)	50	9	8
PINE BLUFF (CR20)	8	4	4
RANDAL L. WILLIAMS (CR13)	15	1	1
TEXARKANA (CR21)	0	0	0
TRANSPORTATION (CR32)	3	0	1
TUCKER BOOTCAMP (CR33)	9	3	2
TUCKER (CR23)	32	5	7
VARNER (CR24)	47	10	1
VARNER SUPER MAX (CR31)	37	2	3
WRIGHTSVILLE (CR25)/HAWKINS(CR06)	37	8	6
TOTAL	582	113	90