



Wendy Kelley
Director

Board Report
August 2016



PUBLIC RELATIONS

RESEARCH/PLANNING

July, 2016 Admissions and Releases – Admissions for July, 2016 totaled **729** (622-males & 107-females), while Releases totaled **657** (560-males & 97-females) for a net in-house of 72.

Inmate Population Growth/Projection – At the end of July 2016, the Arkansas Department of Correction Population totaled **18,130** representing an increase of **423** Inmates since the first of January 2016. Calendar year 2016 has seen an increase of **60** Inmates per month, up from an average decrease of **14** Inmates per month during calendar year 2015.

Average County Jail Back-up – The backup in the County Jails averaged **1,328** (1,335-males & 45-females) Inmates per day during the month of July, 2016, up from an average of 1,123 Inmates per day during the month of June, 2016.

LEGAL SERVICES

PREA

PREA Hotline Data:

There were no reported issues with the PREA Hotline. An internal PREA audit was conducted at the McPherson Unit on July 11th through July 14th.

Number of calls received	196
Total Number of Repeat Calls	64
Total Number of Calls with no message	39
Total Reported PREA Issue Calls	31
Total Reported non-PREA Calls	62
Total Calls due to Technical Failure	0
Totals Calls Referred to Internal Affairs Div	13

INMATE GRIEVANCE

Inmate Formal/Informal Grievances: In July, there were a total of 2,097 formal grievances filed and 3,944 informal grievances filed at various units.

Institutional Grievances: There were a total of 594 appeals of institutional grievances received and 465 appeals answered in July. Two (2) were found with merit.

OPERATIONS/INSTITUTIONS

STTG

The first ever STTG sweep was completed at the EARU by the Agency STTG Coordinator with help from other unit STTG Coordinators and the K9 team. Just over 75 new inmates were flagged for being STTG affiliated and over 150 STTG inmates files were updated. The STTG Coordinator taught a class on prison gangs for the Homeland Security Liaison Officer training in the month on July and attended an Advanced Gang Investigations class in Little Rock.

FARM

July was a big month for vegetable production at all farms. Production exceeded 1,700,000 pounds across the state for the year. There is still a lot of production left to harvest. Fall crops of peas and beans will be planted during the month of August.

Rain was scattered across the row crop farms. Irrigation was the main focus for the month.

Hay production is up this year. North Central Unit has as much hay in the barn now as they had the entire year last year. Wrightsville and Cummins are putting up good numbers of hay as well. Milk production was stopped on July 13th following a high somatic cell count; several corrective actions have been put in place and we expect production to resume very soon.

We sold the Cummins calf crop through Superior Livestock Auctions. The livestock crews did a great job hitting the target weights which generated a good sale.

Corn and rice harvest are fast approaching which means next month will be a busy month.

Regional Maintenance Hours

Regional Maintenance Hours	July
Benton Unit	5,194
Delta Regional Unit	4,346
East Arkansas Unit	4,346
Grimes Unit	2,668
McPherson Unit	3,264
Boot Camp	5,093
Mississippi Co Work Release	1,531
North Central Unit	10,848
Ouachita River	6,200
Randall Williams Unit	4,616
Texarkana Regional Unit	3,112
Varner Unit	2,128
Wrightsville Satellite Unit	4,912
Wrightsville Unit	4,320
Total Hours	49,602

Work Release Rent Report

Work Release Rent Report	July
Benton Unit	\$98,090.00
Pine Bluff Re-entry Work Release	\$27,557.00
Northwest AR Work Release Center	\$39,100.00
Mississippi Co Work Release Center	\$53,737.00
Pine Bluff Unit	\$32,147.00
Texarkana Regional Correctional Center	\$35,156.00
TOTAL	\$285,787.00

Preparing for Success: July 2016

	Slots	Completed	Discharged	End Count
McPherson	15	0	1	8
Ester-4 BKS	50	24	4	45
Ester-5 BKS	50	23	5	52
Total	115	47	10	105

There are 700 males and 62 females on the waiting list within 42 months of their release date and of those, 15 males and 0 females are mandated by the Board of Parole. The average time on the waiting list is about three months. The total on the waiting list, including those not currently within the identified time frame, is 775 males and 90 females.

ADMINISTRATIVE SERVICES**BUDGET SECTION UPDATE****Procurement Section Update:****Current Bids (OSP)**

- HVAC Pine Bluff Unit School Building

Awarded Contracts

- Ester Unit – Plumbing Components
- Ester Unit – Ceiling Material

Contract Renewals

- Canvas Shoes
- Flour
- Paper/Plastic

Procurement/Contracts Report (required by policy) –

For July, Purchase Orders and Contracts in excess of \$10,000 amounted to \$4,310,043.55. Of this amount, \$1,747,470.05 was for Inmate Care and Custody related items (food, shoes, clothing, etc.). Bulk fuel costs for the month of July were \$108,260.41 – average cost of E-10 was \$1.76/gallon; average cost for bulk diesel was \$1.68/gallon.

HUMAN RESOURCES UPDATE:

Workplace Safety – During the month of July, the modified version of the Health and Safety Plan was presented to one Basic Training class with a total of 70 cadets in attendance.

Fifty-nine incidents were reported to the company nurse in July, bringing our total to 436 incidents in 2016.

Benefits – Forty MIPS promotions and 144 MIPS payments were made. Sixty-eight FMLA requests were processed with 66 approved and 2 denied. A total of 10 CAT leave requests were processed with 3 approved and 7 denied. Out of the 4 shared leave applications that were received, 2 were approved, totaling 216 hours of donated time.

Physical Assessments – A total of 251 applicants and incumbent personnel were assessed in the month of July. One hundred twenty-five incumbent personnel successfully passed their physical assessments while 2 did not. One hundred twenty-four applicants passed their physical assessments, and one did not. One rescheduled and passed, and the other has not rescheduled pending medical release.

Employment – A total of 1,525 applications were received in July. Fifty-eight Non-Correctional applications and seventy-nine CO I applications were processed. Fifty-two Correctional Officers were hired, and 17 Correctional Officers were rehired.

Vacancies, Hires, and Terminations - In July, a total of 555 vacancies, 84 new hires, and 102 terminations were at the various ADC locations.

Administrative Services Division Monthly Reports (attached) include:

Gifts, Grants, and Donations/Inmate Welfare Fund Balance (required by policy) – During the month of July, reported are as follows:

Gifts, Grants and Donations:

\$19,127.00 was donated in the month of July.

Inmate Welfare Fund balance on July 31, 2016 was \$5,197,277.00.

The PAWS in Prison Fund total on July 31, 2016 was \$58,714.70 in ADC - account (7004822/Donations) \$19,159.55 and ADC account (NDC0500/Recycling) \$39,555.15. This does not include the Foundation account managed by the PIP Foundation Board.

INFORMATION TECHNOLOGY

In July, the IT department:

- During the pilot, Edovo re-entry inmate tablet use drastically affected the bandwidth at the EARU facility. Router changes were made to reduce the amount of bandwidth allocated to the Edovo tablets. A separate wireless connection method has been installed for the pilot project network connection. Should the agency continue this project, Edovo will provide network connection.
- Uploaded the Year End FY16 County Jail Backup Report to the ADC Website.
- SECURUS Video Visitation KIOSKS are being stalled at Varner. Cummins and Pine Bluff-Re-Entry SVV are now live as of July 6th. The project opened with a \$5.00 promotional price implemented by SECURUS to encourage remote visitation. Thus far, 96 visits have been scheduled. Ten visits were missed due to inmates not attending.
- A conference call to discuss the victim notification letter generating prior to the Parole Board event finalization date. A recent parole board enhancement changed when and how Parole Board "votes" are entered. PB votes now happen in real time, which has caused letters to generate when the final vote is entered and the status is changed to "Finalized." Additional development is required to resolve the issue.
- Attended an ADC Business Managers meeting at Admin East to discuss the new electronic ordering process available to inmates through the SECURUS Inmate KIOSK. Discussion included a request for input from unit commissary staff for programming needs to define the business rules for the electronic ordering processes.
- Setup user accounts for each KIOSK per name provided by SECURUS. Cummins, Cummins MOD, and Pine Bluff Re-

Entry have been completed.

- Met with Sam Sheffield and Brian Strauch on their recent visit to Arkansas. Brian was introduced as Arkansas' new main representative. Sam will still be handling the Arkansas invoicing but will let Brian lead development.

TRAINING ACADEMY

Basic Training Division - Capt. Lance Hall's BCOT Class 2016-H graduated on July 8, 2016, with 44 cadets. The Willis H. Sargent Award winner was Misty Callas from Boot Camp. Director Wendy Kelley served as the special speaker.

On July 29th, Class 2016-I graduated with 60 cadets under Capt. Latisha Davis. Wonder Spearman, East Arkansas Regional, won the Willis H. Sargent Award. Major Maurice Culclager of the Grimes Unit served as the special speaker.

In-Service Division

- The highlight for this month was the Unit Trainer Workshop held on July 13. Although designed for unit trainers in the position for less than a year, the workshop was open to all. Students were able to take instruction in an open environment where they could stop and ask questions, review documents, and even go into the computer lab for a practice session. Topics touched on the basics and foundation of training issues.
- The month closed out with opportunities to attend a few 4 hour individual classes: Image Matters, a course designed to help employees realize how their image affects our agency; Ruling by Fear, a course designed to give students the edge in interviewing and communicating with inmates; and Help Us Help You, a self-help class regarding computers and issues surrounding department electronics.

eCADEMY

- During the month of July, 803 ADC employees completed a total of 11,164.75 hours of eCADEMY training. Approximately 14% of ADC employees completed at least one course during that time frame, for an average of 2.37 % hours per staff member.

HEALTH/CORRECTIONAL PROGRAMS

CHAPLAINCY SERVICES

All Facilities

All inmates who observed Ramadan participated in the Eid al Fitr feast that marks the end of Ramadan.

Benton Work Release

On July 5th, 12th, 19th, and 26th, Financial Peace University

classes were held with 90 inmates attending. House of Refuge Ministries was represented by 5 volunteers who held a worship service on July 16th with the attendance of 19 inmates.

A quarterly meeting for Benton Work Release volunteers was held on July 23rd.

A representative from the Angel Tree Ministries came to the facility on July 30th. The representative helped 26 inmates sign up a total of 39 children to receive Angel Tree Christmas gifts.

Cummins Unit

Chaplaincy sponsored a Home Run Derby in the yard on July 9th. The derby was led by three volunteers that involved 4 separate yard calls and a large number of inmates.

East Arkansas Regional Unit

Basic Literacy classes began on July 18th. On the start date, 19 inmates participated – 10 tutors and 9 students.

ACCREDITATION

ACA Audits have been completed for the first half of the year. Upcoming audits for the second half of the year will be Wrightsville Complex and Benton Unit in September, and Tucker Unit in October.

ACA Internal Audits Completed:

July 6	Tucker Unit file prep
July 7-8	Benton Unit file prep
July 12-15	Central Office file prep
June 15-16	Central Office file prep
July 18-19	Tucker Unit file prep
July 20-22	Central Office file prep
July 25	Tucker Unit file prep
July 26	Wrightsville unit 2 nd pre-audit
July 29	Benton Unit file prep

Fire/Safety and Sanitation independent audits conducted by the Fire and Sanitation Coordinator:

July 5-7	Wrightsville Unit Independent
July 11-13	Wrightsville Unit Independent
July 14	Tucker Unit Audit
July 18-19	Tucker Unit Audit
July 20-21	Benton Unit Independent Audit
July 22	Tucker Unit Audit
July 25	Tucker Unit Audit
July 26	Wrightsville Unit Audit
July 27-28	Tucker Unit Audit

VOLUNTEER SERVICES

The total number of volunteer hours for July:

Unit	Hours
Benton	10
Delta Regional	17
Hawkins	8
Mississippi Co Work Release	9
North Central Unit	39
Northwest Ark Work Release	10.25
Ouachita River	18
Randall Williams	20
Tucker	7
Wrightsville Satellite	278
Wrightsville-Men	26.5
PAWS	3
Religious All Units	5,922
TOTAL	6,367.75

PROGRAM INFORMATION

Sex Offender Treatment

	SLOTS	COMPLETED	REMOVED	CLIENTS
RSVP	238	0	4	238
SOFT	30	0	0	13
Total	268	0	4	251

There are 744 males on the waiting list for RSVP and 16 females on the waiting list for SOFT within five years of their TE date and of those 63 are mandated by the Parole Board. The average time on the waiting list from request is about three to six months for stipulated. The total on the waiting list, including those not currently within the identified time frame, is 1,580 males and 21 females. We have one **PREA** inmate in the program at this time.

Therapeutic Community:

	Slots	Completed	Removed	Clients
Tucker	129*	17	7	136
Wrightsville	45*	6	1	47
McPherson	50*	2	2	56
Total	224	25	10	239

There are 187 males and 14 females on the waiting list within 18 months of their release date and of those, 14 are mandated by the Parole Board. The average time on the waiting list from request is 23 days. The total on the waiting list including those not currently within the identified time frame is 513 males and 52 females.

*Denotes transitional beds available at this treatment program. Tucker TC has 129 client slots and seven peer counselor slots.

S.A.T.P.:

	Slots	Completed	Removed	Clients
Grimes	50*	8	1	50
McPherson	100*	7	9	100
MSU	3	1	0	3
RLW/CF	188*	21	18	187
Tucker	43*	3	2	43
Varner	44	3	6	46
Wrightsville	135*	15	16	138
Total	563	58	52	567

There are 2,132 males and 358 females on the waiting list within 18 months of their release date and of those, 31 are mandated by the Parole Board. The average time on the waiting list from request is 20 days. The total on the waiting list including those not currently within the identified time frame is 2,995 males and 469 females.

*Denotes transitional beds available at this treatment program.

ORCU R.P.U.:

The Residential Program Unit at Ouachita had 25 admissions and 15 discharges in July for an end-of-month count of 85.

McPherson Mental Health Residential Program:

There were 4 admissions and 3 discharged in July for an end-of-month count of 40.

Habilitation Program:

The Habilitation Program at the Ouachita River Correctional Unit provided treatment services to 40 inmates during July. There were 2 admissions and 2 discharges for an end-of-month count of 38.

Staffing:

The following Mental Health Services and SATP positions were vacant in June and July.

	June	July
Psychologists	7	6
Social Workers	11	10
Advisors	2	3
Substance Abuse Program Leaders	2	2
Admin Specialist/Analyst	1	2

ADDITIONAL PROGRAM INFORMATION**Self-study Classes:**

	# of Participants	# Completed	Waiting List
Anger Management	357	276	1,333
Thinking Errors	469	356	2,005
Substance Abuse Education	136	75	363
Communication Skills	183	139	1,263
Domestic Violence	40	26	674
Victims of Domestic Violence	6	4	60
Stress Management	136	49	1,399
Parenting	222	178	1,122

Suicide:

There were 102 suicidal threats, gestures or low/moderate risk attempts during July. There were no serious attempts.

Outpatient:

There were 2,287 inmates on the mental health medical log at the beginning of July. Mental Health conducted the following contacts during July:

Case management contacts	2,325
Requests for interviews	6,113
Testing	5
Intakes	696
Unit requests	1,340
Counseling (with treatment plans)	111
Pre-lock up reviews	708
Routine segregation reviews	294
Segregation rounds	11,643
PREA evaluations	50
Routine follow-up	192
834 requests	34

County Mental Health Requests:

During July, there were 46 requests of a mental health nature received. Twenty-four inmates were fast tracked to ADC.

Monetary Sanctions:

Sanction reimbursements for July were \$34,450.00.

County Medical Health Requests:

During July, there were 340 requests of a medical nature received and 14 were fast tracked.

Deaths:

There were 4 inmate deaths during the month of July; 2 were claimed and 2 cremated.

CCS:

See attachment for CCS's report regarding outside beds and emergency room visits.

Medical Grievances:

In July, there were a total of 264 appeals of medical grievances received and 250 appeals were answered. Twenty of those were found to be with merit and 5 with merit, but resolved.

SEX OFFENDER ASSESSMENT**Assessments Completed:**

Risk Level	October	Sept. 1999 thru July 31, 2016
Level 1	1	1,152
Level 2	51	6,307
Level 3	29	6,076
Level 4	3	571
Default 3	1	*
Total	85	14,106
*Default Level 3's are included in the total number of Level 3's to date.		

ACIC Numbers:

The total number of sex offenders registered from Sept. 1, 1999 to July 31, 2016:

In Compliance	7,347
Delinquent (Did not return address on time)	903
Confined	2,958
Out of State	2,970
Address Unknown (absconded)	179
Deceased	1,020
Deported	166
Incapacitated	71
Out of USA	4
Total	15,618

PAWS IN PRISON**Currently Enrolled in Training:**

Maximum Security Unit	6
Tucker Unit	11
Hawkins Unit	5
Randall Williams Unit	4
Ouachita River Unit	7
North Central Unit	8
Total	41

Completed Training:

July 2016	16
YTD 2016	134
Since Inception Dec. 2011	797
Dogs Currently in foster: (Graduated but not adopted)	5

CONSTRUCTION**PROJECT UPDATES****Barbara Ester Unit:**

Barracks are being renovated in old hospital/medical areas. Re-roofing is near completion. Structural steel installation is complete. We continue to purchase material; installing new metal ceilings; working on plumbing & electrical; working on Phase 3.

New School at Pine Bluff Unit:

Concrete foundations, floor slab and sidewalks have been poured. All underground utilities are in place below the slab. Anchor bolts have been placed. Metal building scheduled to arrive August 16th.

Cummins Unit:

Work is being rendered on roof repairs and interior repairs to two Freeline residences and the Guest House. Roadwork to the wastewater plant is complete.

Cummins Poultry:

The generator is tested weekly. JBP architects are working on additional cooler Plans and Specifications.

Delta Unit:

Work is still being executed on storm damage. Roof repair bid closed and is in review.

East Arkansas Regional Unit:

Work is in progress on building a new firing range. Porches and under pinning on State trailers are being finished. Material has been received for farm building to be moved. Requisitions have been submitted for free-line gate. Received purchase for plumbing to install stainless steel in barracks. Farm trailer has been moved to the free-line.

HDRS Building:

Work is being performed on extending parking lot.

Pine Bluff:

PBU Kitchen Air Conditioner is in place and working. Make-up air units to be installed.

Ouachita River Correctional Unit:

Continuing gravel operations. Chapel metal building bid has been awarded and is expected to arrive September 16th. Foundation, floor slab and underground utilities have been completed. Sidewalks to the Chapel are being built.

NCU:

Additional handicap parking spaces have been built. Footings for new hot house for Vo-Tech has been poured.

Maximum Security Unit:

The boiler is being repaired. The metal ceilings on the walkways in the barracks are being worked on.

Tucker Unit:

Layne Well Drilling has arrived and started drilling new well. ADC will lay 1000' of 8' waterline as a part of this project. All material for the 8ft waterline are being provided by Layne as a part of their contract and have been delivered.

Varner:

Work is in progress on re-roofing Unit buildings.

Wrightsville:

Work is being rendered on kitchen roof repairs.

CONSTRUCTION PERSONNEL UPDATE:

2-Project Supervisors

1-COI

4-Maintenance Technicians

[illegible][illegible]

Inmate Institutional Grievance Appeal Report July 2016				
	Received	Rejected	Processed W/O Merit	Processed W/ Merit
Benton Unit	0	0	0	0
Benton Work Release	0	0	0	0
Bowie County Texas Correctional Facility	18	4	13	0
Cummins Unit	30	9	21	0
Cummins Modular Unit	0	2	1	0
Delta Regional Unit	8	1	14	0
East Arkansas Regional Unit	41	4	24	0
East Arkansas Regional Maximum Unit	50	12	59	1
Grimes Unit	31	16	26	0
Maximum Security Unit	54	9	43	0
McPherson Unit	36	18	26	0
McPherson Mental Health Residential Program Unit	2	3	1	0
Mississippi County Work Release Center	0	0	0	0
Northwest Arkansas Work Release Center	1	0	0	0
North Central Unit	18	9	11	0
Ouachita River Correctional Unit	27	14	46	0
ORCU Hospital	1	0	2	0
ORCU New Commitment	1	0	1	0
ORCU Mental Health Residential Program Unit	0	0	1	0
Pine Bluff Unit	1	0	1	0
Ester Unit	2	0	1	0
Pine Bluff Re-Entry	0	0	0	0
Randall L. Williams Correctional Facility	11	2	6	0
Texarkana Regional Correctional Center	0	0	0	0
Tucker Unit	13	4	29	1
Varner Super Max	98	14	100	0
Varner Unit	22	1	26	0
Wrightsville Unit	3	0	7	0
Wrightsville Satellite Unit	0	0	0	0
Hawkins Center	1	3	2	0
Hawkins for Males	0	0	2	0
Hawkins SPU	0	0	0	0
Total	469	125	463	2

Admissions and Releases			
July 2016			
<u>Admissions</u>	<u>Male</u>	<u>Female</u>	<u>Total</u>
Asian	2	0	2
Black	199	16	215
Hispanic	22	0	22
Nat. Amer.	2	0	2
Hawaiian/Pacific Isl	1	0	1
White	395	91	486
Other	1	0	1
Unknown	0	0	0
Total	622	107	729
<u>Releases</u>	<u>Male</u>	<u>Female</u>	<u>Total</u>
Asian	2	0	2
Black	208	19	227
Hispanic	20	2	22
Nat. Amer.	0	1	1
Hawaiian/Pacific Isl	0	0	0
White	329	75	404
Other	0	0	0
Unknown	1	0	1
Total	560	97	657

**ARKANSAS DEPARTMENT OF CORRECTION
INMATE POPULATION GROWTH 2000-2023**

Updated 07/31/2016

Mo.	2000	2001	2002	2003	2004	2005	2006	2007	2008	2009	2010	2011	2012	2013	2014	2015	2016
Jan.	11,984	11,908	12,402	13,015	13,105	13,595	13,481	13,839	14,518	14,796	15,334	16,312	15,134	14,815	17,481	18,142	17,785
Feb.	12,169	12,022	12,529	13,054	13,166	13,783	13,633	14,012	14,603	14,883	15,374	16,209	14,990	15,008	17,438	18,082	17,625
March	12,006	12,033	12,299	13,108	13,088	13,418	13,534	13,772	14,580	14,843	15,290	16,095	14,964	14,665	17,395	18,233	17,573
April	12,069	12,167	12,465	13,213	13,323	13,469	13,554	13,851	14,769	14,937	15,570	16,172	15,124	14,850	17,604	18,703	17,815
May	12,109	12,384	12,558	13,463	13,556	13,528	13,711	14,146	14,880	15,146	15,694	16,062	15,132	15,074	17,593	18,693	17,769
June	12,005	12,108	12,439	13,418	13,389	13,251	13,430	13,915	14,700	15,025	15,564	15,554	14,832	14,825	17,340	18,813	17,973
July	12,030	12,190	12,622	13,509	13,528	13,286	13,560	14,082	14,868	15,195	15,807	15,519	14,879	15,379	17,522	18,870	18,130
August	12,087	12,371	12,815	13,565	13,632	13,419	13,646	14,224	15,100	15,385	15,829	15,240	14,675	16,103	17,549	18,806	
September	11,983	12,289	12,774	13,341	13,516	13,237	13,652	14,217	14,850	15,285	16,025	15,172	14,724	16,412	17,605	18,549	
October	12,119	12,348	12,942	13,341	13,584	13,363	13,775	14,349	14,836	15,381	16,311	15,271	14,856	16,993	17,880	18,430	
November	12,094	12,408	13,162	13,408	13,706	13,587	13,913	14,437	15,025	15,340	16,460	15,205	14,625	17,168	17,848	17,981	
December	11,856	12,333	12,845	13,106	13,470	13,338	13,728	14,315	14,716	15,199	16,204	15,062	14,654	17,235	17,874	17,707	
Net Ann. Inc.	29	477	512	261	364	-132	390	587	401	483	1,005	-1,142	-408	2,581	639	-167	423
Avg. Mo. Inc.	2	40	43	22	30	-11	33	49	33	40	84	-95	-34	215	53	-14	60

Population is total jurisdictional count at end of each month. Population at end of month December 1999 was 11,827.

Average monthly population increase for past fifteen years 2001 - 2015 is 33.

Average monthly population increase for past ten years Jan. 2006 - Dec 2015 is 36

Average monthly population increase for past five years 2011 - 2015 is 25

Projected at Growth of 33 per Month

Mo.	2008	2009	2010	2011	2012	2013	2014	2015	2016	2017	2018	2019	2020	2021	2022	2023
	Actual	Actual	Actual	Actual	Actual	Actual	Actual	Actual	Actual/	Proj.	Proj.	Proj.	Proj.	Proj.	Proj.	Proj.
January	14,518	14,796	15,334	16,312	15,134	14,815	17,481	18,142	17,785	18,328	18,724	19,120	19,516	19,912	20,308	20,704
February	14,603	14,883	15,374	16,209	14,990	15,008	17,438	18,082	17,625	18,361	18,757	19,153	19,549	19,945	20,341	20,737
March	14,580	14,843	15,290	16,095	14,964	14,665	17,395	18,233	17,573	18,394	18,790	19,186	19,582	19,978	20,374	20,770
April	14,769	14,937	15,570	16,172	15,124	14,850	17,604	18,703	17,815	18,427	18,823	19,219	19,615	20,011	20,407	20,803
May	14,880	15,146	15,694	16,062	15,132	15,074	17,593	18,693	17,769	18,460	18,856	19,252	19,648	20,044	20,440	20,836
June	14,700	15,025	15,564	15,554	14,832	14,825	17,340	18,813	17,973	18,493	18,889	19,285	19,681	20,077	20,473	20,869
July	14,868	15,195	15,807	15,519	14,879	15,379	17,522	18,870	18,130	18,526	18,922	19,318	19,714	20,110	20,506	20,902
August	15,100	15,385	15,829	15,240	14,675	16,103	17,549	18,806	18,163	18,559	18,955	19,351	19,747	20,143	20,539	20,935
September	14,850	15,285	16,025	15,172	14,724	16,412	17,605	18,549	18,196	18,592	18,988	19,384	19,780	20,176	20,572	20,968
October	14,836	15,381	16,311	15,271	14,856	16,993	17,880	18,430	18,229	18,625	19,021	19,417	19,813	20,209	20,605	21,001
November	15,025	15,340	16,460	15,205	14,625	17,168	17,848	17,981	18,262	18,658	19,054	19,450	19,846	20,242	20,638	21,034
December	14,716	15,199	16,204	15,062	14,654	17,235	17,874	17,707	18,295	18,691	19,087	19,483	19,879	20,275	20,671	21,067
Net Ann. Inc.	401	483	1,005	-1,142	-408	2,581	639	-167	588	396	396	396	396	396	396	396
Ave. Mo. Inc.	33	40	84	-95	-34	215	53	-14	49	33	33	33	33	33	33	33

July 2016 ADC Monthly Population Averages

Unit/Center	7/1	7/4	7/5	7/6	7/7	7/8	7/11	7/12	7/13	7/14	7/15	7/18	7/19	7/20	7/21	7/22	7/25	7/26	7/27	7/28	7/29	AVG
Benton	339	337	337	334	335	331	326	326	326	326	327	329	328	329	328	326	325	325	325	326	332	333
Cummins	1,929	1,924	1,924	1,919	1,915	1,925	1,916	1,918	1,913	1,912	1,909	1,917	1,913	1,917	1,930	1,950	1,958	1,954	1,951	1,958	1,955	1,929
Delta	633	628	628	626	626	614	613	627	627	628	624	622	619	621	616	632	629	628	626	623	623	624
E AR Reg	1,689	1,689	1,689	1,689	1,683	1,687	1,691	1,688	1,687	1,683	1,684	1,689	1,692	1,690	1,685	1,689	1,684	1,690	1,689	1,689	1,684	1,687
Ester	379	376	376	375	372	370	366	371	378	377	377	376	378	376	366	375	378	380	378	375	373	375
Grimes	1,079	1,074	1,074	1,077	1,077	1,073	1,076	1,078	1,072	1,069	1,069	1,074	1,084	1,084	1,082	1,076	1,079	1,079	1,075	1,077	1,086	1,077
Max Sec	639	638	638	638	642	641	640	640	645	645	643	639	626	625	626	627	631	634	633	638	639	637
McPherson	1,016	1,017	1,017	1,015	1,018	1,008	1,018	1,017	1,016	1,015	1,017	1,014	1,014	1,015	1,019	1,020	1,019	1,019	1,019	1,020	1,023	1,017
MCWRC	144	144	144	144	144	143	143	142	142	141	144	144	144	142	142	144	144	143	144	144	144	143
N Central	828	822	822	828	824	824	839	835	835	835	840	842	836	840	838	833	837	837	830	839	835	833
NWAVRC	99	98	98	100	100	100	100	100	100	100	100	100	100	100	100	100	100	100	98	100	100	100
Quachita River	1,839	1,860	1,860	1,869	1,857	1,842	1,862	1,842	1,843	1,857	1,855	1,852	1,851	1,856	1,845	1,835	1,834	1,847	1,865	1,853	1,861	1,852
Randall L Williams	557	561	561	563	563	562	562	564	563	564	565	567	571	568	565	556	554	557	559	561	558	562
Pine Bluff	429	429	429	429	428	435	437	436	430	430	423	426	427	425	423	428	428	429	430	426	425	429
PB Reentry	54	54	54	54	54	54	53	52	52	52	54	54	54	53	53	54	54	54	54	54	54	54
TRCC	127	127	127	127	127	128	126	126	126	128	127	127	127	128	128	128	128	128	128	128	128	127
Tucker	1,015	1,021	1,021	1,018	1,015	1,016	1,017	1,014	1,008	1,007	1,005	1,010	1,018	1,017	1,013	1,014	1,017	1,015	1,019	1,016	1,014	1,015
Varner	1,742	1,739	1,739	1,737	1,746	1,751	1,751	1,751	1,749	1,750	1,746	1,744	1,748	1,740	1,734	1,741	1,738	1,739	1,744	1,737	1,742	1,743
Wrightsville	1,495	1,488	1,488	1,493	1,492	1,496	1,495	1,495	1,495	1,492	1,490	1,490	1,492	1,495	1,495	1,492	1,497	1,493	1,484	1,489	1,485	1,492
Total ADC	16,032	16,026	16,026	16,035	16,018	16,000	16,031	16,022	16,007	16,011	15,999	16,016	16,022	16,021	15,988	16,020	16,034	16,051	16,052	16,055	16,062	16,025
ALETA	20	20	20	20	20	20	20	20	20	20	20	20	20	20	20	20	20	20	20	20	20	20
Ar State Police	62	62	62	62	62	62	62	62	62	62	62	62	62	60	60	60	60	59	59	59	59	61
Co Jail / M	1,204	1,215	1,215	1,250	1,290	1,288	1,245	1,249	1,292	1,286	1,317	1,310	1,329	1,343	1,347	1,322	1,300	1,310	1,333	1,322	1,335	1,291
Co Jail / F	34	37	37	32	34	36	29	31	31	35	36	33	39	41	35	31	36	40	46	42	45	36
Total Co Jail BK	1,238	1,252	1,252	1,282	1,324	1,324	1,274	1,280	1,323	1,331	1,353	1,343	1,368	1,384	1,382	1,353	1,336	1,350	1,379	1,384	1,380	1,327
Bowie Co., TX	335	335	335	335	333	332	332	336	336	336	334	334	333	334	334	334	334	334	334	333	333	334
309/M	226	225	225	224	224	222	220	220	222	224	223	219	218	216	223	224	224	224	222	222	222	222
309/F	32	32	32	32	32	32	32	32	32	32	32	32	32	32	32	32	32	32	32	32	32	32
Total Act 309	258	257	257	256	256	254	252	252	254	256	255	251	250	248	255	256	256	256	254	254	254	254
Total Non ADC	1,913	1,926	1,926	1,955	1,995	1,992	1,940	1,950	1,995	2,005	2,024	2,010	2,033	2,046	2,051	2,023	2,006	2,019	2,046	2,030	2,046	1,997
Total	17,945	17,952	17,952	17,990	18,013	17,992	17,971	17,972	18,002	18,016	18,023	18,026	18,055	18,067	18,039	18,043	18,040	18,070	18,098	18,095	18,108	18,022

Fiscal Year 2017 County Jail Back-up

DAY		Jul-16
1		1,238
2	*	1,238
3	*	1,238
4		1,252
5		1,252
6		1,282
7		1,324
8		1,324
9	*	1,324
10	*	1,324
11		1,274
12		1,280
13		1,323
14		1,331
15		1,353
16	*	1,353
17	*	1,353
18		1,343
19		1,368
20		1,384
21		1,382
22		1,353
23	*	1,353
24	*	1,353
25		1,336
26		1,350
27		1,379
28		1,364
29		1,380
30	*	1,380
31	*	1,380
Average		1,328

Notes: Totals do not include 309 Contracts in County Jails (maximum of 336)

July 2016 STTG Unit Counts

Unit	Confirmed	Suspected	In	Out	Paroled	Removed	Ending Total
Benton	7	0	4	7	2	0	48
Cummins	0	0	40	25	10	0	448
Delta	0	0	20	13	7	0	138
EARU	0	0	18	14	9	0	520
Grimes	5	0	22	14	14	0	276
Hawkins	0	0	7	3	1	0	48
Mcpherson	1	0	2	2	0	0	67
Max	0	0	7	6	0	0	250
MCWR	0	0	8	6	1	0	42
NCU	0	0	32	23	7	0	197
NWAWR	0	0	3	4	0	0	18
ORCU	2	0	52	23	8	0	317
ORCU Intake	117	0	0	101	0	0	67
PB/Ester	0	0	0	0	0	0	0
RLW	0	0	26	22	4	0	139
TWR	0	0	2	1	0	0	33
Tucker	0	0	0	0	0	0	0
Varner	0	0	0	0	0	0	0
Wrightsville	0	0	63	23	9	0	249
Total	132	0	306	287	72	0	2857

ORCU Intake brought in 117 new STTG members into ADC this Month.

STTG Incidents

STTG	Incidents	Total
STTG Incidents		10
STTG Suspected Incidents		5
Unit Total Disciplinary		1675
Disciplinary Involving STTG		376
Percent		22.45%

July 2016 STTG Counts by STTG Set

STTG Set	Benton	Cummins	Delta	EARU	Grimes	Hawkins	Mcpherson	Max	MCWR	NCU	NWAWR	ORCU	Intake	PB	RLW	TWR	Tucker	Vaner	Wrightsville	Total
Asian	1	0	0	7	0	0	0	0	0	0	1	1	0	0	0	0	0	0	0	10
Bloods	8	82	27	99	53	4	9	63	2	27	2	55	13	0	26	10	0	0	52	532
Crips	2	69	23	52	32	7	11	31	1	22	1	43	5	0	14	4	0	0	49	366
Folk	10	140	30	178	81	16	11	84	9	44	6	90	20	0	45	12	0	0	71	847
Mexican	1	15	10	11	10	1	3	5	4	7	1	17	2	0	3	0	0	0	7	97
Motorcycle	1	3	0	3	2	1	1	0	0	0	0	1	1	0	0	0	0	0	0	13
Other	2	7	3	7	8	0	0	5	1	6	1	4	2	0	1	0	0	0	12	59
People	3	24	6	19	16	4	4	9	1	12	0	19	1	0	6	0	0	0	17	141
Unknown	0	4	2	12	8	1	3	1	1	7	0	11	1	0	4	4	0	0	3	62
W/S	11	33	19	132	20	7	12	15	6	32	3	21	10	0	14	3	0	0	17	355
NAE	2	16	6	0	11	0	8	7	9	8	1	18	3	0	9	0	0	0	4	102
WAR	5	40	4	0	22	4	3	14	4	16	1	26	6	0	10	0	0	0	13	168
AC	1	7	2	0	11	3	2	13	0	7	0	8	2	0	4	0	0	0	0	60
AB	1	8	6	0	2	0	0	3	4	9	1	3	1	0	3	0	0	0	4	45
Total	48	448	138	520	276	48	67	250	42	197	18	317	67	0	139	33	0	0	249	2,857

Key:

W/S = White Supremacist

NAE = New Aryan Empire

WAR = White Aryan Resistance

AC = Aryan Circle

AB = Aryan Brotherhood

CHAPLAINCY

Monthly Report for: July 2016	BENTON	CUMMINS	DELTA REGIONAL	EAST ARKANSAS	EAST ARKANSAS MAX	ESTER	GRIMES	HAWKINS	MAXIMUM SECURITY	MCPHERSON	NORTH CENTRAL	OUACHITA RIVER	PINE BLUFF	RANDALL L. WILLIAMS	TUCKER	VARNER	VARNER MAX	WRIGHTSVILLE	PTF	TOTAL
Services Chaplains Oversaw																				
Christian																				
Population	2	14	9	4	0	12	22	4	11	10	9	50	2	10	3	2	0	12	0	176
Segregation	0	0	0	0	0	0	0	0	0	0	0	0	0	0	0	0	0	0	0	0
Muslim																				
Population	0	4	0	3	0	4	6	8	0	2	1	0	1	6	0	1	0	1	0	37
Segregation	0	0	0	0	0	0	0	0	0	0	0	0	0	0	0	0	0	0	0	0
Total Services																				213
Volunteers in Charge																				
Protestant	18	32	0	31	0	10	27	5	24	42	22	65	10	11	17	16	2	26	0	358
Catholic	0	0	0	4	0	0	4	2	0	3	2	1	0	1	0	0	4	4	0	25
Muslim	0	0	0	4	0	0	0	0	0	0	0	6	0	1	0	0	0	2	0	13
Other	4	0	0	11	0	0	0	1	1	4	0	0	0	0	0	0	0	0	0	21
Baptism	0	1	0	17	0	0	0	0	0	0	3	0	0	0	1	0	0	0	0	22
Marriages	1	0	0	3	0	0	0	0	0	0	0	0	0	0	0	0	1	1	0	6
Distributed by Chaplains																				
Greeting Cards	25	26	5	0	0	45	126	0	400	357	54	5	100	18	157	229	110	0	0	1657
Bibles, Quran, Torah, Etc.	50	45	3	25	0	6	21	37	20	57	18	250	15	16	9	145	19	25	0	761
Study Course	100	17	0	1	0	0	16	0	150	0	0	10	10	7	0	93	3	0	0	407
Writing Supplies	10	47	0	0	0	0	8	562	850	0	0	60	0	11	0	0	0	0	0	1548
Literature	150	576	0	778	0	0	48	2	1125	152	635	565	150	15	574	1826	166	375	250	7387
Chaplain's Visits																				
Barracks	56	133	1	26	20	80	399	27	101	120	24	140	68	68	100	11	0	36	10	1420
Approximate Hours Spent in Barracks	39	43	8	34	12	49	18	51	25	50	18	20	30	30	25	2	0	36	5	495
Inmate Office visits	69	76	8	73	0	300	136	75	54	100	42	275	82	131	160	49	0	52	6	1688
Other Office visits	0	12	0	0	0	6	21	0	28	5	0	0	11	10	0	0	0	1	0	94
Hospital	0	1	0	0	0	0	10	0	0	0	1	24	0	7	2	1	0	5	0	51
Infirmary/Sick Call	0	4	1	0	0	8	17	0	2	5	6	8	4	10	30	0	0	0	0	95
Admin Seg	0	6	0	0	18	0	6	0	32	10	0	18	0	0	0	0	0	0	0	90
Segregation	0	0	0	0	0	0	112	2	0	10	0	20	4	10	0	0	24	0	0	182
Punitive	0	4	0	0	0	0	0	0	13	10	5	13	4	10	5	0	0	5	0	69
PC	0	0	1	0	0	0	0	0	0	10	0	0	0	0	0	0	0	0	0	11
Visitation Days	2	0	0	0	0	0	0	0	0	0	6	4	0	0	0	0	0	0	0	12
Volunteer Visits																				
RCV	7	0	0	0	0	0	4	2	27	21	10	61	0	18	10	0	0	0	0	160
OCV	5	0	0	0	0	6	0	75	33	47	31	3	14	20	33	18	0	32	0	317
Spiritual Advisor	0	1	0	0	0	0	1	0	0	1	0	4	1	5	3	0	0	1	1	18
CRA	31	57	0	80	6	10	27	36	123	64	80	118	11	25	52	46	24	15	0	805
Religious Volunteer Hours																				
Volunteer Hours	106	158	0	258	14	32	232	175	791	416	328	566	58	131	346	212	20	53	3	3898
DENOMINATIONAL/VOLUNTEER CHAPLAIN HOURS	78	201	0	0	0	80	57	131	102	188	186	412.5	48	125	100	35	0	280	0	2024
Total Volunteer Hours																				5922
Other Activities of Chaplain																				
Counseled Employees	12	4	2	5	0	10	10	3	8	1	6	60	8	14	8	1	0	10	1	163
Orientation Sessions	0	4	0	0	0	0	0	1	0	5	2	0	0	0	0	0	0	0	0	12
Free World Devotions	0	11	0	0	0	4	0	0	0	5	0	13	12	12	0	0	0	0	0	57
Spoke in Churches	13	18	0	28	0	8	16	0	0	4	0	8	12	12	4	1	0	12	0	136
Crisis Intervention Sessions	5	15	2	0	0	10	2	0	0	7	6	14	12	6	23	8	0	30	0	140
Marriage Counseling	3	1	0	3	0	3	0	0	0	0	0	2	0	2	1	0	1	1	0	17
Denominational Meeting	0	2	0	10	0	4	0	0	0	0	0	1	0	1	0	0	0	1	0	19
Chaplain's Meeting	2	3	1	1	0	1	2	1	0	1	1	3	1	1	1	1	0	2	0	22
Volunteer Training Session	1	0	0	0	0	9	0	1	0	0	1	0	0	0	3	0	0	0	0	15
Choir Trip	0	0	0	0	0	0	0	0	0	0	0	0	0	0	0	0	0	0	0	0
Chaplain Transfers	0	1	0	0	0	0	0	0	0	0	0	1	0	0	0	0	0	0	0	2
Chaplain Promotions																				
	0	0	0	0	0	0	0	0	0	0	0	1	0	0	0	0	0	0	0	1
PAL PROGRAM																				
Enrolled at start of month	0	46	14	49	0	0	55	42	23	35	25	43	0	29	62	45	0	26	0	494
Enrolled during the month	0	10	0	4	0	0	2	24	3	15	9	5	0	4	12	3	0	3	0	94
Removed From PAL Program																				
# Paroled	0	2	0	1	0	0	0	2	0	7	2	1	0	2	2	1	0	3	0	23
# Completed	0	3	7	1	0	0	4	0	1	1	2	1	0	0	2	0	0	0	0	22
# Withdrew	0	0	0	0	0	0	2	4	0	1	1	0	0	0	3	2	0	1	0	14
# Removed	0	3	0	1	0	0	0	0	2	4	1	2	0	2	4	1	0	0	0	20
# Transferred	0	1	0	1	0	0	1	0	0	4	0	2	0	1	1	0	0	1	0	12
Total Removed from PAL Program	0	9	7	4	0	0	7	6	3	17	6	6	0	5	12	4	0	5	0	91
Total Enrolled at the End of the Month	0	47	7	49	0	0	50	60	23	33	28	42	0	28	62	44	0	24	0	497
Volunteers In PAL	0	23	1	10	0	0	19	12	11	36	5	10	0	7	3	2	0	4	0	143
Special Events:																				
	8	1	1	2	1	1	1	1	1	1	1	1	1	1	1	2	2	1	1	29

ARKANSAS DEPARTMENT OF CORRECTION

Construction Budget / Status Report

Report Date - August 5, 2016

Data as of 08/01/16

Fund	Project Desc	Total Projected		Available		\$ %	Construction	Notes
		Spend	Budget	Funds	Complete	% Complete	% Complete	
7004810	Cummins Poultry Houses	\$5,481,607	\$6,100,000	\$618,393	90%	90%		Cooler in design.
7004819	ESTER - Phase 1	\$3,886,593	\$4,000,000	\$113,407	97%	97%		184 beds opened 7/1/15. Kitchen complete. 190 beds opened January 2016. Phase 3 roof and interior underway.
700481A	ESTER - Phase 2 1A	\$1,518,006	\$5,100,000	\$3,581,994	30%	80%		
7004820	ESTER - Phase 2 - Kitchen	\$373,623	\$1,700,000	\$1,326,377	22%	100%		
KBR4Q95	ESTER - Phase 3 - General Improvement Fund	\$2,210,698	\$7,400,000	\$5,189,302	30%	35%		
NDC0100	Wrightsville Generator	\$183,750	\$200,000	\$16,251	92%	100%		1st phase complete, 2nd phase prioritized.
70004820	Tucker 2016 New Well	\$390,157	\$550,000	\$159,843	71%	30%		Contractor on site, setting up, 120 days to complete
7004815	ORCU- Chapel	\$100,551	\$200,000	\$99,449	50%	15%		Slab Complete
	Pine Bluff Unit Barracks Renovation		\$784,000					Plans to DBA
Telephone Projects								
Maintenance & Operations	Camera Equipment - All Units	\$0	\$250,000	\$250,000	0%	0%		
	Fire Alarm Upgrades (All Units)	\$11,320	\$53,000	\$41,680	21%	71%		All identified are complete.
	Locks/Riot Gates - All Units	\$15,315	\$75,000	\$59,685	20%	60%		EARU underway.
	Gates and Fences all units	\$32,516	\$50,000	\$17,484	65%	81%		RLW Underway
	Gas Stations - Canopy (C/O)	\$0	\$5,000	\$5,000	0%	85%		Canopy built in shop to do foundation
	Stainless Steel - Kitchen/Shower/Restrooms - All Unit	\$1,718	\$50,000	\$48,282	3%	97%		On Going, sinks, showers, ceiling.
	ACA Maintenance	\$0	\$175,000	\$175,000	0%	100%		
	ADA Projects - All Units	\$1,643	\$5,000	\$3,357	33%	100%		
	Fast Top Floor Systems - (kitchen/laundry/showers all	\$2,542	\$50,000	\$47,458	5%	95%		100% of identified projects
	Delta - Gym Repairs 3/13/16 Storm Damage		\$111,000	\$111,000	0%	55%		Plans at DBA for review.
	A/C Units - All Units		\$150,000	\$150,000	0%	55%		
	Lawn Equipment - All Units	\$0	\$0	\$0	0%	0%		Moved 1/20/16
	Parking Lot - Gravel and Paving - EARU	\$0						Plans underway.
	Parking Lot - Gravel and Paving - Tucker	\$0	\$250,000	\$250,000	0%			Tucker Completed 2015
	Parking Lot - Gravel and Paving - Other Units	\$0						
	Subtotal	\$65,054	\$1,870,921	\$1,805,867				
FY16 Carryforward	ORCU Gravel Pit Operations	\$9,638	\$45,000	\$35,362	21%	91%		continual
	PB Kitchen HVAC	\$0	\$12,000	\$12,000	0%	0%		on hold
	Dog Kennel/Horse Stable Malvern	\$0	\$48,000	\$48,000	0%	100%		
	Tucker Pole Barn (Reg. Maint.) Firing Range	\$0	\$12,200	\$12,200	0%	100%		
	Metal Ceilings	\$1,300	\$75,000	\$73,700	2%	81%		Max Barracks 1 in process.
	Subtotal	\$10,938	\$192,202	\$181,264				
FY17 New Projects	Emergency Generator - All Units	\$0	\$220,000	\$220,000	0%	0%		Plans in Design
	Tucker Wastewater Containers	\$0	\$31,000	\$31,000	0%	0%		
	Boiler Repairs	\$17,944	\$90,000	\$72,056	20%	100%		100% of identified projects
	Roof Repairs-Tucker	\$0				30%		Underway
	Roof Repairs-Varner	\$49,008				50%		Underway
	Roof Repairs-East Arkansas	\$0				20%		Underway
	Roof Repairs-Cummins Laundry	\$0				25%		Underway
	Subtotal	\$66,952	\$591,000	\$524,048	11%			
	Subtotal	\$142,944	\$2,654,123	\$2,511,179	5%			

Notes

- * Report has not been reconciled against Accountings Reconciled Reports.
- * Tolerance/Deviation is with in 1% of Projected Spending.
- * FY2015 Carry forward to FY2016 Project Budget = (FY2015 Actual Spending + FY2016 Approved Budget Amount.)

July 2016 Medical Grievance Board Report							
Unit	Acknowledged/ Received	Rejected	Reviewed & Signed by Dep Director	With Merit	With Merit, but Resolved	% With Merit	Without Merit
Benton	0	0	0	0	0	0%	0
Boot Camp	0	0	0	0	0	0%	0
Bowie Co.	7	1	5	0	1	20%	4
CMU	0	0	0	0	0	0%	0
Cummins	17	1	18	2	0	11%	16
Delta	5	1	7	1	0	14%	6
EARU	34	4	10	0	0	0%	10
EARU Max	32	5	25	3	0	12%	22
Ester	2	1	0	0	0	0%	0
Grimes	13	5	17	0	0	0%	17
Hawkins	1	0	0	0	0	0%	0
McPherson	20	1	8	2	0	25%	6
MCWRC	0	0	0	0	0	0%	0
MSU	29	5	29	3	1	14%	25
North Central	8	1	15	0	0	0%	15
NWAWRC	0	0	0	0	0	0%	0
Ouachita	24	6	26	4	1	19%	21
Pine Bluff	0	0	0	0	0	0%	0
Randall Williams	3	0	2	0	0	0%	2
SNN	5	0	5	0	0	0%	5
TRCC	0	0	0	0	0	0%	0
Tucker	5	0	10	0	0	0%	10
Varner	18	3	32	1	0	3%	31
Varner S Max	38	7	36	4	2	17%	30
WRU	2	1	4	0	0	0%	4
WHM	1	0	1	0	0	0%	1
WWR	0	0	0	0	0	0%	0
TOTAL	264	42	250	20	5	10%	225

ARKANSAS DEPARTMENT OF CORRECTION INPATIENT AND EMERGENCY ROOM UTILIZATION

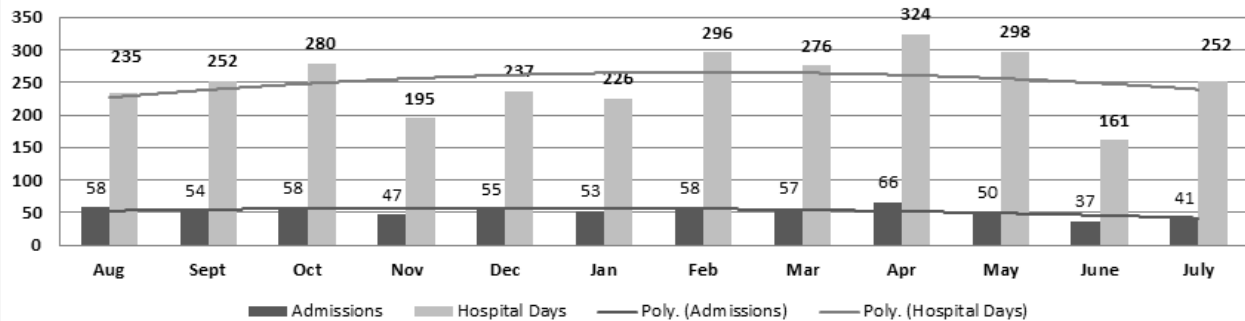
ADC Inpatient Statistics Past 12 Months

	2016												Average
	Aug	Sept	Oct	Nov	Dec	Jan	Feb	Mar	Apr	May	June	July	
Admissions	58	54	58	47	55	53	58	57	66	50	37	41	52.8
Hospital Days	235	252	280	195	237	226	296	276	324	298	161	252	252.7
Average Length of Stay	4.05	4.67	4.83	4.15	4.31	4.26	5.10	4.84	4.91	5.96	4.35	6.15	4.78

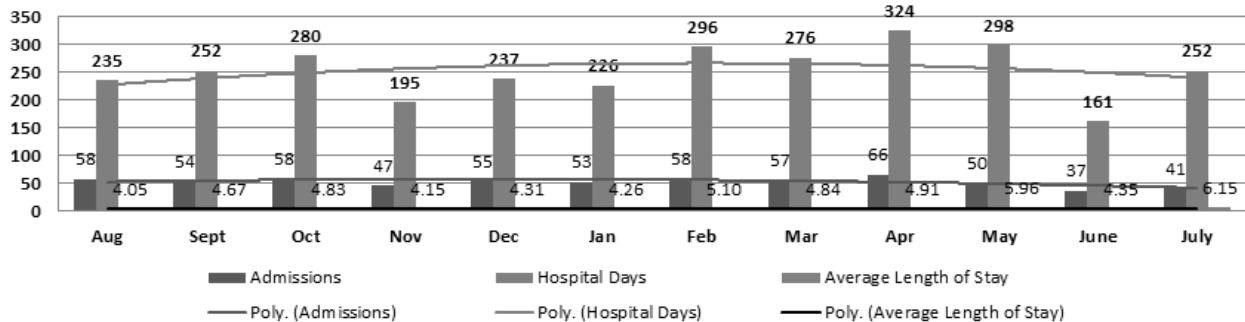
ADC ER Visits Past 12 Months

	2015					2016							Average
	Aug	Sept	Oct	Nov	Dec	Jan	Feb	Mar	Apr	May	June	July	
Emergency Room Visits	74	76	72	63	78	70	100	99	95	108	73	66	81.2

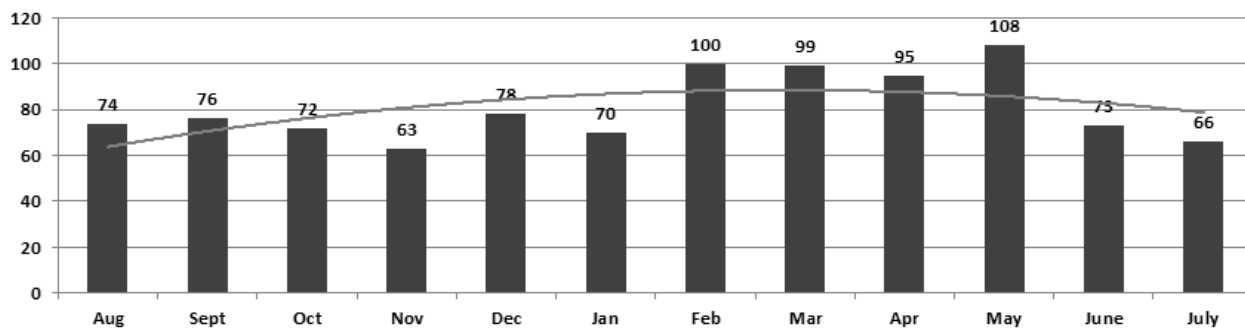
ADC Inpatient Utilization Past 12 Months



ADC Inpatient Average Length of Stay Past 12 Months



ADC Emergency Room Visits Past 12 Months



JULY 2016 PURCHASE ORDERS OVER \$10,000.00					
VENDOR	DESCRIPTION	LOCATION	PO#	PURCHASE AMOUNT	FUND
Sysco Food Services of AR Inc	Food Purchases	Central Warehouse	4501634340	\$ 320,640.00	Operational Budget
William A Harrison Inc	HVAC Equipment	Randall Williams Unit	4501635501	\$ 12,056.04	Operational Budget
AR Dept of Correction Industry	Inmate Clothing & Linen	Varner Unit	4501634916	\$ 71,291.24	Operational Budget
Bob Barker Company Inc	Inmate Clothing	Varner Unit	4501634311	\$ 26,503.04	Operational Budget
Uniforms 4 All Inc	Uniforms	Training Academy	4501633886	\$ 14,582.69	Operational Budget
Galls LLC	Uniforms	Training Academy	4501634129	\$ 18,885.14	Operational Budget
William A Harrison Inc	HVAC Equipment	Pine Bluff Unit	4501635580	\$ 12,000.07	Operational Budget
McKesson Medical Surgical	Health/Lab Supplies	Admin Bldg/Medical Services	4501634431	\$ 27,549.78	Operational Budget
U S Foods	Food Purchases	Central Warehouse	4501635411	\$ 67,735.50	Operational Budget
Cruse Uniforms & Equipment Inc	Body Armor	Training Academy	4501633773	\$ 21,044.73	Operational Budget
Capital Fire Extinguisher Co Inc	Fire Suppression System	Wrightsville Unit/Industry	4501635075	\$ 10,716.58	Operational Industry Budget
Mid States Services Inc	Tissue Paper	Hawkins Unit/ACI Imaging	4501635101	\$ 48,537.60	Operational Industry Budget
Printing Papers Inc	Xerox Paper	Central Warehouse	4501636037	\$ 27,122.30	Operational Budget
M J Kellner	Food Purchases	Central Warehouse	4501636057	\$ 103,360.00	Operational Budget
National Food Group	Food Purchases	Central Warehouse	4501636049	\$ 46,115.00	Operational Budget
AR Dept of Correction Industry	Food Purchases	Central Warehouse	4501636071	\$ 12,861.00	Operational Budget
AR Dept of Correction Industry	Tissue Paper	Central Warehouse	4501636080	\$ 254,333.75	Operational Budget
Long Lake Irrigation Inc	Irrigation Supplies	Cummins Unit/Farm	4501636743	\$ 15,389.17	Operational Farm Budget
Miller Bowie Supply	Chicken Feed	Cummins Feed Mill	4501636801	\$ 179,040.00	Operational Farm Budget
AR Dept of Correction Industry	Inmate Clothing & Linen	Wrightsville Unit	4501636408	\$ 72,600.76	Operational Budget
AR Dept of Correction Industry	Inmate Clothing	Randall Williams Unit	4501636076	\$ 18,529.52	Operational Budget
Chapel Hardware & Garden Center	Mower	Delta Regional Unit	4501637494	\$ 11,592.56	Operational Budget
Greenway Equipment Inc	Hay Net Wrap	Wrightsville Unit/Farm	4501636473	\$ 10,341.51	Operational Farm Budget
Green Point AG LLC	Fertilizer	Wrightsville Unit/Farm	4501636455	\$ 13,000.00	Operational Farm Budget
GE Government Supply LLC	Powdered Milk	Cummins Creamery	4501636583	\$ 86,800.00	Operational Farm Budget
Associated Packaging Inc	Milk Processing Equipment	Cummins Creamery	4501636483	\$ 26,092.40	Operational Farm Budget
Helena Chemical Company	Chemical Herbicide	Cummins Chemical Shed	4501636882	\$ 12,000.00	Operational Farm Budget
Long Lake Irrigation Inc	Irrigation Supplies	Cummins Unit/Farm	4501637000	\$ 15,617.07	Operational Farm Budget
Shamrock Meats Inc	Ground Beef	Cummins Cold Storage Facility	4501637189	\$ 479,700.00	Operational Farm Budget
Cedar Creek LLC	Plywood	Wrightsville ACI Warehouse	4501636943	\$ 14,703.00	Operational Industry Budget
JMS Russel Metals Corp	Fabrication Material	Tucker Unit/Industry	4501636926	\$ 70,551.60	Operational Industry Budget
Natural State Crop Consultant LLC	Garden Consultant	Cummins Unit/Farm	4501636491	\$ 16,875.00	Operational Farm Budget
Green Point AG LLC	Herbicide	Cummins Chemical Shed	4501637062	\$ 26,973.00	Operational Farm Budget
AR Dept of Correction Industry	Mattresses & Clothing Bags	Pine Bluff Unit	4501638066	\$ 17,343.25	Operational Budget
AR Dept of Correction Industry	Brogans	Ester Unit	4501637953	\$ 12,224.41	Operational Budget
Mid South Sales Inc	Unleaded Gas & Low Sulfur Diesel	Central Warehouse	4501637220	\$ 12,260.78	Operational Budget
Delta Manufacturing Inc	Livestock Trailer	Tucker Unit	4501638847	\$ 14,853.13	Operational Budget
AR Dept of Correction Industry	Inmate Clothing	Pine Bluff Unit	4501638538	\$ 20,035.42	Operational Budget
Bob Barker Company Inc	Clothing	Pine Bluff Unit	4501638425	\$ 14,263.12	Operational Budget
AR Dept of Correction Industry	Inmate Clothing	Ester Unit	4501638450	\$ 30,961.25	Operational Budget
Bob Barker Company Inc	Inmate Clothing	Ester Unit	4501638446	\$ 15,347.02	Operational Budget
American Paper & Twine Co	Paper Towels	Central Warehouse	4501639021	\$ 11,039.62	Operational Budget
B Sharp Blades LTD	Disposable Razors	Central Warehouse	4501639018	\$ 16,100.33	Operational Budget
William R Hill & Co Inc	Food Purchases	Central Warehouse	4501639038	\$ 107,494.94	Operational Budget
U S Foods	Food Purchases	Central Warehouse	4501639045	\$ 60,696.80	Operational Budget
Sysco Food Services of AR Inc	Food Purchases	Central Warehouse	4501639052	\$ 58,852.30	Operational Budget
Robbins Sales Co Inc	Food Purchases	Central Warehouse	4501638947	\$ 15,136.80	Operational Budget
National Food Group	Food Purchases	Central Warehouse	4501638952	\$ 71,112.40	Operational Budget
Atlantic Beverage Company	Food Purchases	Central Warehouse	4501638957	\$ 14,670.40	Operational Budget
Green & Chapman LLC	Ethanol Gasoline	Wrightsville Unit	4501634719	\$ 12,188.24	Operational Budget
West End Roofing Siding & Window	Roofing Material	Varner Unit	4501639497	\$ 42,564.64	Telephone Funds
Simpson Door and Hardware LLC	Doors	EARU Unit	4501639991	\$ 10,673.19	Telephone Funds
Huntley Metal Sales	Metals	Ester Unit	4501640012	\$ 10,223.68	DOC Existing Facilities
Little Rock Winnelson	Plumbing Equipment	Tucker Unit	4501640239	\$ 10,707.06	Operational Budget
Tommys Flying Service Inc	Aerial Service	Tucker Unit/Farm	4501640624	\$ 10,704.00	Operational Farm Budget
Green Point AG LLC	Chemicals	Tucker Unit/Farm	4501639810	\$ 14,392.50	Operational Farm Budget
Cedar Creek LLC	Oak	Wrightsville ACI Warehouse	4501639771	\$ 18,900.00	Operational Industry Budget
Green & Chapman LLC	Low Sulfur Red Diesel	Tucker Unit/Farm	4501637051	\$ 11,455.95	Operational Farm Budget
Tri-County Farmers Association	Low Sulfur Red Diesel	EARU/Farm	4501634721	\$ 12,501.62	Operational Farm Budget
Delta Manufacturing Inc	Delta Gooseneck Trailer	Cummins Commissary	4501641138	\$ 14,767.28	Operational Budget
Greenway Equipment Inc	Tractors	Cummins/Farm Operation	4501640662	\$ 102,467.67	Operational Farm Budget
Green Point AG LLC	Insecticide	Cummins/Chemical Shed	4501640517	\$ 22,011.20	Operational Farm Budget
Green & Chapman LLC	Low Sulfur Red Diesel	Cummins/Farm Operation	4501637045	\$ 35,461.71	Operational Farm Budget
Redwood Toxicology Lab Inc	Drug Testing Fee	Admin Bldg/Drug Testing	4501641337	\$ 16,791.76	Operational Budget
Premier Biotech Inc	Drug Testing Supplies	Admin Bldg/Drug Testing	4501641241	\$ 16,243.00	Operational Budget
Northern Oil Company Inc	Fuel Purchases	Ouchita River	4501641639	\$ 12,157.73	Operational Budget
AR Dept of Correction Industry	Clothing	Cummins Commissary	4501641427	\$ 37,074.52	Operational Budget
The Sherwin-Williams Co	Paint Supplies	Benton/Maintenance	4501641714	\$ 11,745.54	Operational Budget
Long Lake Irrigation Inc	Poly Pipes	Tucker/Farm	4501641242	\$ 19,968.53	Operational Farm Budget
Tymetal Corp	Fence Parts	Wrightsville/Construction	4501641632	\$ 21,969.78	Operational Budget
William R Hill & Co Inc	Vegetable Oil	Central Warehouse	4501642286	\$ 24,049.20	Operational Budget
AR Dept of Correction Industry	Cleaner	Central Warehouse	4501642304	\$ 12,336.34	Operational Budget
William R Hill & Co Inc	Food Purchases	Central Warehouse	4501644046	\$ 21,586.56	Operational Budget
U S Foods	Food Purchases	Central Warehouse	4501644052	\$ 45,933.46	Operational Budget
National Food Group	Food Purchases	Central Warehouse	4501644058	\$ 46,115.00	Operational Budget
Agvise Crop Consulting LLC	Crop Consulting	Cummins/Farm Operation	4501636633	\$ 21,872.00	Operational Farm Budget
Helena Chemical Company	Soybean Herbicide	Cummins/Chemical Shed	4501642275	\$ 26,250.00	Operational Farm Budget
McVay and Helms Veterinary Clinic	Cattle Wormer	Cummins/Farm Operation	4501642279	\$ 10,370.00	Operational Farm Budget
Tri-County Farmers Association	Chemicals	EARU/Farm	4501642333	\$ 38,326.00	Operational Farm Budget
Riceland Foods Inc	Soybean Feed	Cummins/Feed Mill	4501642769	\$ 93,895.20	Operational Farm Budget
Shoe Corporation of Birmingham	Shoes/Boots	Tucker/Industry	4501639088	\$ 17,085.90	Operational Industry Budget
Helena Chemical Company	Soybean Herbicide	Cummins/Chemical Shed	4501643445	\$ 15,750.00	Operational Farm Budget
Green & Chapman LLC	Fuel Purchases	Cummins/Commissary	4501639236	\$ 12,234.38	Operational Budget
Little Rock Winnelson	Boiler Repairs	Construction	4501642997	\$ 11,369.96	Operational Budget
Turner Holdings LLC Hiland Diary	Food Purchases	Central Warehouse	4501642968	\$ 10,300.00	Operational Budget
Turner Holdings LLC Hiland Diary	Food Purchases	Central Warehouse	4501645368	\$ 13,045.76	Operational Budget
Turner Holdings LLC Hiland Diary	Food Purchases	Central Warehouse	4501643501	\$ 20,352.80	Operational Budget
Turner Holdings LLC Hiland Diary	Food Purchases	Central Warehouse	4501643503	\$ 20,336.32	Operational Budget
AR Dept of Correction Industry	Boots	Cummins/Commissary	4501645173	\$ 16,317.21	Operational Budget
AR Dept of Correction Industry	Boots	Randall Williams Unit	4501643964	\$ 10,995.96	Operational Budget
Cruse Uniforms & Equipment Inc	Ammunition	McPherson Unit	4501643836	\$ 10,055.36	Operational Budget
Cedar Creek LLC	Lumber	Wrightsville/Industry	4501644922	\$ 16,500.00	Operational Industry Budget
Grimco INC	Vinyl Products	Cummins/Industry	4501645408	\$ 16,143.83	Operational Industry Budget
Razor Chemical INC	Cleaner	Delta Regional Unit	4501645437	\$ 15,836.40	Operational Industry Budget
Seedway LLC	Garden Seeds	Cummins/Farm Operation	4501645133	\$ 62,327.00	Operational Farm Budget
Hertz Corp	Building supplies	Construction	4501644753	\$ 12,946.11	Operational Budget
Pyramid Interiors Distributors of AR	Building materials	Construction	4501644666	\$ 50,308.74	DOC Existing Facilities
Total for Purchases over \$10,000				\$ 3,795,141.11	
FIRM CONTRACTS OVER \$25,000.00					
VENDOR	DESCRIPTION	UNIT	Contract # P.O.#	PURCHASE AMOUNT	FUND
Southern Pipe & Supply CO Inc	Plumbing Supplies & Equipment	Construction	4501642094	\$ 236,660.37	DOC Existing Facilities
Pyramid Interiors Distributors of AR	Ceiling Materials	Construction	4501644486	\$ 278,242.07	DOC Existing Facilities
Total for Contracts				\$ 514,902.44	
EMERGENCY PURCHASE ORDERS OVER \$25,000.00					
Total EM Purchases				\$ -	
Total Purchases				\$ 4,310,043.55	

**Arkansas Department of Correction
Vacancies, Hires, and Terminations
July 2016**

UNIT	VACANCIES	HIRES	TERMINATIONS
BENTON (CR05)	2	1	1
CENTRAL OFFICE (CR01, CR02, CR08 & CR22)	29	2	9
CHAPLAINCY	5	1	1
CONSTRUCTION (CR04)	7	1	0
CUMMINS (CR09)	83	17	9
DELTA (CR10)	4	5	1
EAST ARKANSAS (CR12)	56	5	13
ESTER (CR11)	10	0	2
FARM (CR29)	9	1	1
GRIMES (CR27)	9	3	4
INDUSTRY (CR07)	13	0	2
MAXIMUM SECURITY (CR14)	29	5	10
MCPHERSON (CR28)	21	7	6
MENTAL HEALTH	19	0	0
MISS COUNTY (CR15)	3	0	1
NORTH CENTRAL (CR16)	3	4	1
NORTHWEST ARK (CR17)	1	0	0
OUACHITA RIVER (CR30)	61	12	12
PINE BLUFF (CR20)	3	4	2
RANDAL L. WILLIAMS (CR13)	11	1	7
TEXARKANA (CR21)	0	0	0
TRANSPORTATION (CR32)	2	0	1
TUCKER BOOTCAMP (CR33)	0	3	0
TUCKER (CR23)	34	3	7
VARNER (CR24)	62	3	5
VARNER SUPER MAX (CR31)	45	2	1
WRIGHTSVILLE (CR25)/HAWKINS(CR06)	34	4	6
TOTAL	555	84	102