

Vision Statement: To be an honorable and professional organization through ethical and innovative leadership at all levels, providing cost efficient, superior correctional services that return productive people to the community.



## Director's Message:

FY2013 was a year of improvements and successes for ADC. A wastewater treatment facility serving the Tucker and Maximum Security Units was completed. The new facility features a computerized switching system to improve output and efficiency. Its capacity is large enough to adequately handle the existing facilities, as well as any future expansions. In September, ADC and its sister agency, the Arkansas Department of Community Correction, hosted meetings of the Association of Women Executives in Corrections and the National Association of Women Working in Corrections and Juvenile Justice. The conferences were held together and both were well-attended by membership from across the U.S. Arkansas Paws in Prison hosted its first fundraiser, Bark at Dark, on September 20th. The event netted \$14,000 to support the training program, which saves dogs and supports the successful re-entry of inmates. The Agriculture Division's second horse auction raised more than \$27,000 from the sale of 37 horses. The annual auction helps the agency to thin its working horse herd and ensure the animals go to good homes. New armory buildings were constructed at the Ouachita River and Pine Bluff Units. The buildings will help meet demands for additional supply space and provide a center for weaponry repairs. The Wrightsville Unit Regional Maintenance program was recognized in September 2012 with a special commendation from the Little Rock Parks and Recreation Department. Regional Maintenance crews worked approximately 3,000 hours on beautification and upkeep projects in several Little Rock area parks. As Director, I am proud of ADC's employees and their accomplishments over the past year. We look forward to new opportunities in service to this great state. On behalf of this agency, I extend a collective thank you for the support ADC has received from the Governor, the General Assembly and the Board of Corrections.

### *The Mission Statement of the Arkansas Department of Correction is to:*

- Provide public safety by carrying out the mandates of the courts;
- Provide a safe, humane environment for staff and inmates;
- Provide programs to strengthen the work ethic;
- Provide opportunities for spiritual, mental, and physical growth.



Sincerely,

A handwritten signature in black ink, appearing to read 'Ray Hobbs', with a stylized flourish at the end.

Ray Hobbs



Governor - Mike Beebe

# Annual Report

# Highlights fy 13

## ADC Training Academy aids in virtual video production

ADC officers participated in the filming of a training video to be produced by Savant Learning Systems of Martin, Tennessee. The filming took place in the old Diagnostic Unit, was coordinated by Training Administrator Fred Campbell and included members of the Emergency Response Team from the North Central Unit and the Central Office Canine Unit as well as other correctional officers. ADC Director Ray Hobbs filmed an introduction for the video. The video will be sold for training purposes in corrections facilities across the country.



## National Health Services Corps

The NHSC was designed to bring primary care health workers to the most underserved communities of the country. In exchange for their medical expertise, the NHSC helps these professionals alleviate debt accumulated during the course of their education. The NHSC programs include Scholarship Program, Loan Repayment Program and Student to Service Program. The ADC is a participant in this Federal Loan Repayment program and site profiles were completed in order to enhance our recruitment benefits.

## Computer-Based GED

The Pine Bluff Unit became the fifth correctional facility in the U.S. on October 4th to successfully deliver a GED test via the computer. The inmate who took the test scored 660 on the social studies test, which is in the 95th percentile. With this milestone, the ADC School System will begin the mandatory process of transitioning from paper and pencil tests to computer-based testing.



## Tucker Beehives

Honey production had a two-fold effect on the Tucker farm. As the bees produced honey, they also provided natural cross-pollination for the crops in the field. This is the second year that the Beehives have produced over 800 pounds of honey.



## New water treatment facility

A wastewater treatment facility serving the Tucker and Maximum Security Units was completed. The new facility features a computerized switching system to improve output and efficiency. Its capacity is large enough to adequately handle the existing facilities, as well as any future expansions.



## Bark at Dark a howling success for Paws in Prison

Arkansas Paws in Prison held its first benefit auction, Bark at Dark, on September 20th. This event brought in more than \$14,000 to support the training program, which saves dogs and supports the successful re-entry of inmates.



## Adapted Exercise Program

The Ouachita River Correctional Unit began the Adapted Exercise Program on Aug. 21, 2012 to help expand exercise opportunities for inmates using wheelchairs and walkers. This new program will benefit aging inmates and those whose physical conditions prevent normal routines of muscle strengthening, those who have lost the use of limbs or have had limbs amputated, stroke victims or those who have suffered other injuries. AEP focuses on therapeutic exercise as preventive therapy.

## State Prison Match Program

The FAA is required by law to revoke the airman certificate of convicted individuals who engage in specific drug-related activities. The



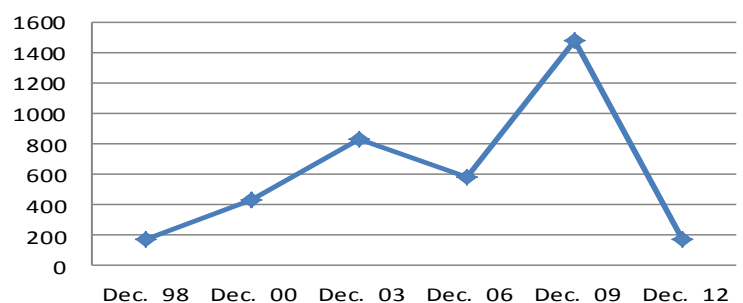
Computer Prison Match Program encompasses the matching of convicted drug offenders, including those who receive probation in lieu of incarceration, against the FAA's airman database. Any matches may be investigated and result in the suspension of an airman certificate. The FAA has partnered with numerous states to conduct this program which has resulted in numerous suspensions and

revocations of airman certificates.

## County Jail Backup

The combined efforts by ADC, DCC, the Parole Board, Arkansas Sentencing Commission and Prosecutors, December 18, 2012 the county jail backup reached its lowest since 1998 of 170. FY13 the county jail backup averaged 391.

### County Jail Backup December 18th



# Budget fy 13

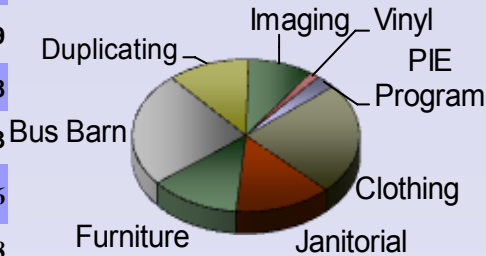
## Construction Expenditures

Construction, Office Expansion	\$ 14,430
CU, Main Gate Relocation/Parking Lot	201,009
Cummins Unit, Poultry Project	306,048
Diagnostic VUB Warehouse	9,553
EARU/Tucker Water Tank Renovation	87,876
EARU Ambulance Entrance Road	1,338
EARU, Vo-Tech & Industry Building	27,996
EARU, Relocate TB Lights	13,088
EARU/Varner Hoe Squad Bks Cameras	99,770
Energy Efficiency Projects	2,499,737
McPherson Unit, Expansion	15,289
Newport Gate House	15,801
North Central Unit, Expansion Phase I	80,436
North Central Unit, Expansion Phase II	2,253,983
NWA W/R Expansion	129,802
ORCU, Armory	17,684
ORCU, Special Needs Unit	256,120
Pine Bluff Unit, Armory-Building	4,528
RLW, Locker Boxes Vo-Tech Area	11,736
RLW, Overhead Doors	11,739
RLW, Perimeter Fence	8,240
Security Fence	11,628
Tucker Max Unit, Metal Ceilings	143,980
Tucker Unit, Wastewater Treatment	489,987
Varner Unit, HVAC/Chillers/Boilers	41,052
<b>Total Expenditures</b>	<b>\$ 6,752,850</b>

## Funding

General Revenue	\$ 298,842,000
Work Release	1,870,000
Agriculture	15,078,637
Industry	8,241,735
<b>Total</b>	<b>\$ 324,032,372</b>

## Industry Revenue



Clothing	\$1,701,375
Janitorial	990,311
Furniture	919,172
Bus Barn	1,749,899
Graphic Arts	840,752
Imaging	659,521
Vinyl	103,182
PIE Program	206,863
<b>Total</b>	<b>\$ 7,171,076</b>

## Average Inmate Cost

Year	Per Day	Per Year
2002	42.59	15,545.35
2003	44.11	16,100.15
2004	47.32	17,271.80
2005	48.24	17,607.60
2006	52.12	19,023.80
2007	54.82	20,009.30
2008	57.13	20,852.45
2009	60.19	21,969.35
2010	60.03	21,910.95
2011	59.7	21,790.50
2012	61.83	22,567.95
2013	62.93	22,969.45

## Care & Custody

Operating Expenditures	
2002	182,187,792
2003	185,682,413
2004	209,542,704
2005	215,042,365
2006	243,207,957
2007	253,342,707
2008	272,844,471
2009	280,135,153
2010	288,888,121
2011	303,606,007
2012	320,877,549
2013	320,227,065

## Agriculture Programs

Unit	Acres	Program
Cummins	14,597	Crops, Garden, Livestock
Tucker	3,771	Row crops, Garden, Beehives
Wrightsville	5,000	Livestock
East AR Reg.	2,500	Cotton, Wheat, Soybean
Ouachita	100	Garden, Livestock
Newport	159	Garden, Livestock
N. Central	179	Orchard, Garden, Livestock
Pine Bluff	359	Garden, Livestock

**Total Acreage 26,665**

## Federal Grants Received

Residential Substance Abuse (R11-190)	\$53,628
Residential Substance Abuse (R12-190)	16,783
Bulletproof Vest Partnership Program (BVP)	17,776
Women in Corrections (Ground Zero)	4,277
State Criminal Alien Assistance Program (SCAAP 2012)	355,034
<b>Total Received</b>	<b>\$ 447,498</b>

# Demographics fy 13

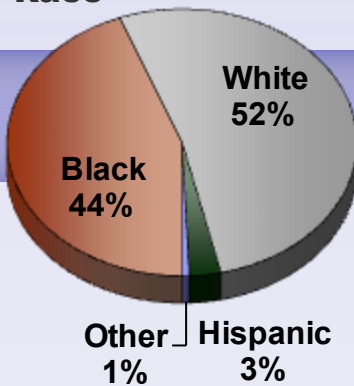
## Top 10 Admission Offenses

Offense	Total	Avg. Sentence
Man/Del/Poss Con. Substances	1,029	8y 8m 0d
Theft of Property	464	7y 9m 20d
Robbery	346	12y 0m 23d
Commercial Burglary	280	8y 6m 10d
Poss. Firearm Certain Person	261	7y 8m 17d
Sexual Assault	228	11y 8m 14d
Residential Burglary	197	7y 9m 24d
Forgery	190	6y 0m 10d
Battery-2nd Degree	174	5y 3m 10d
Failure to Appear	174	6 8m 8d

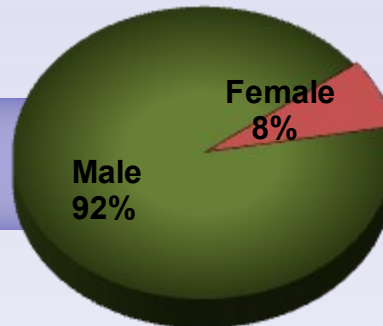
## Top 10 Current Population Offenses

Offense	Total	Avg. Sentence
Man/Del/Poss Con.Substance	2,095	16y 9m 15d
Rape	1,558	33y 3m 0d
Aggravated Robbery	1,310	28y 10m 0d
Murder - 1st Degree	1,173	41y 9m 18d
Sexual Assault	844	15y 7m 0d
Robbery	752	17y 1m 19d
Capital Murder	611	0y 0m 0d
Theft of Property	489	11y 4m 22d
Battery - 1st Degree	472	21y 5m 0d
Criminal Attempt	398	22y 0m 24d

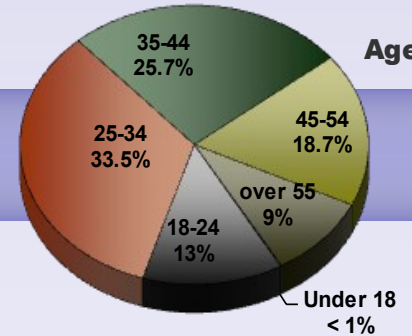
### Race



### Gender



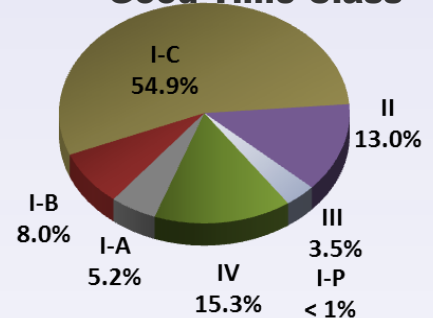
### Age



### FY13 Releases

FY13 Releases				Average Sentence Data			
	Males	Females	Total		Male	Female	Total
Asian	26	2	28	Sent.	7y 3m 14d	3y 6m 0d	7y 0m 6d
				Stay	2y 6m 23d	0y 6m 13d	2y 5m 2d
Black	2,209	139	2,348	Sent.	9y 11m 10d	7y 4m 23d	9y 9m 15d
				Stay	4y 9m 0d	3y 0m 9d	4y 7m 24d
Unknown	1	0	1	Sent.	3y 0m 0d	0	3y 0m 0d
				Stay	0y 6m 20d	0	0y 6m 20d
Hispanic	206	6	212	Sent.	7y 11m 2d	11y 11m 0d	8y 0m 14d
				Stay	2y 7m 24d	4y 3m 5d	2y 8m 11d
NA Indian	14	6	20	Sent.	6y 4m 9d	6y 10m 0d	6y 6m 0d
				Stay	2y 9m 25d	2y 9m 23d	2y 9m 24d
Mexican	2	0	2	Sent.	6y 0m 6d	0	6y 0m 0d
				Stay	0y 9m 8d	0	0y 9m 8d
Other	5	0	5	Sent.	4y 7m 13d	0	4y 7m 13d
				Stay	2y 3m 13d	0	2y 3m 13d
Caucasian	3,354	509	3,863	Sent.	8y 4m 22d	7y 0m 7d	8y 2m 16d
				Stay	3y 9m 24d	2y 6m 7d	3y 7m 22d
Total	5817	662	6479	Sent.	8y 11m 12d	7y 1m 17d	8y 9m 5d
				Stay	4y 1m 13d	2y 7m 20d	3y 11m 18d

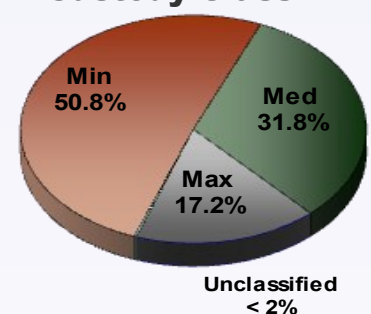
### Good Time Class



### Population - 6/30/2013

Custody - 14,061  
Jurisdiction - 14,825  
Average Daily - 14,780

### Custody Class



# Admissions fy 13

County	Males			Females		
	B	W		B	W	

Arkansas	49	13	1.0%	1	2	0.0%
Ashley	37	23	0.9%	0	7	0.1%
Baxter	1	49	0.8%	0	8	0.1%
Benton	12	204	3.4%	0	36	0.6%
Boone	1	47	0.7%	0	7	0.1%
Bradley	13	8	0.3%	1	0	0.0%
Calhoun	6	4	0.2%	1	0	0.0%
Carroll	0	19	0.3%	0	2	0.0%
Chicot	14	3	0.3%	0	1	0.0%
Clark	23	15	0.6%	3	3	0.1%
Clay	0	26	0.4%	0	3	0.0%
Cleburne	0	38	0.6%	0	6	0.1%
Cleveland	8	8	0.2%	0	2	0.0%
Columbia	23	2	0.4%	2	3	0.1%
Conway	13	22	22.0%	0	0	0.0%
Craighead	70	64	2.1%	3	10	0.2%
Crawford	12	127	2.2%	0	8	0.1%
Crittenden	148	46	3.0%	5	3	0.1%
Cross	3	5	0.1%	0	1	0.0%
Dallas	17	4	0.3%	2	0	0.0%
Desha	19	8	0.4%	0	1	0.0%
Drew	31	10	0.6%	2	2	0.1%
Faulkner	56	86	2.2%	2	6	0.1%
Franklin	2	40	0.7%	0	6	0.1%
Fulton	0	15	0.2%	0	1	0.0%
Garland	44	92	2.1%	2	18	0.3%
Grant	5	25	0.5%	1	2	0.0%
Greene	5	78	1.3%	0	16	0.2%
Hempstead	32	21	0.8%	1	3	0.1%
Hot Springs	34	70	1.6%	2	17	0.3%
Howard	31	26	0.9%	3	7	0.2%
Independence	8	52	0.9%	0	16	0.2%
Izard	0	5	0.1%	0	1	0.0%
Jackson	27	45	1.1%	3	6	0.1%
Jefferson	171	34	3.2%	10	7	0.3%
Johnson	3	58	0.9%	0	7	0.1%
Lafayette	16	6	0.3%	0	0	0.0%
Lawrence	1	32	0.5%	0	5	0.1%
Lee	5	2	0.1%	0	0	0.0%

County	Males			Females		
	B	W		B	W	

Lincoln	4	4	0.1%	0	1	0.0%
Little River	28	37	1.0%	2	6	0.1%
Logan	0	20	0.3%	0	3	0.0%
Lonoke	39	112	2.3%	1	17	0.3%
Madison	0	18	0.3%	0	3	0.0%
Marion	1	13	0.2%	0	1	0.0%
Miller	74	90	2.5%	10	21	0.5%
Mississippi	77	45	1.9%	6	7	0.2%
Monroe	20	10	0.5%	1	0	0.0%
Montgomery	0	13	0.2%	0	0	0.0%
Nevada	6	10	0.2%	0	1	0.0%
Newton	0	3	0.0%	0	0	0.0%
Ouachita	26	14	0.6%	2	0	0.0%
Perry	0	6	0.1%	1	1	0.0%
Phillips	25	1	0.4%	0	0	0.0%
Pike	2	24	0.4%	0	6	0.1%
Poinsett	9	27	0.6%	0	2	0.0%
Polk	0	31	0.5%	0	5	0.1%
Pope	36	133	2.6%	5	33	0.6%
Prairie	12	6	0.3%	0	4	0.1%
Pulaski	588	230	12.7%	38	30	1.1%
Randolph	1	29	0.5%	0	0	0.0%
St Francis	24	7	0.5%	1	0	0.0%
Saline	22	97	1.8%	2	17	0.3%
Scott	0	22	0.3%	0	3	0.0%
Searcy	0	11	0.2%	0	1	0.0%
Sebastian	130	394	8.1%	14	92	1.6%
Sevier	10	56	0.0%	0	13	0.2%
Sharp	1	23	0.4%	0	4	0.1%
Stone	0	20	0.0%	0	0	0.0%
Union	74	36	1.7%	6	4	0.2%
Van Buren	0	27	0.4%	0	3	0.0%
Washington	64	335	6.2%	9	52	0.9%
White	37	117	2.4%	4	16	0.3%
Woodruff	1	2	0.0%	0	0	0.0%
Yell	1	20	0.3%	0	1	0.0%

**Males = 5,727 Females = 716 Total Intakes = 6,443**

**Average County Jail Backup - 391  
Average County 309 Contract - 303**

# Directory fy 13

## Ray Hobbs, Director

(870) 267-6200

Jada Lawrence, Assistant to the Director  
Jan Scussel, Chief Legal Council  
Raymond Naylor, Administrator, Internal Affairs  
Frank Ellis, Audit Manager  
Donna Stout, EEOC Officer  
Shea Wilson, Legislative, Public Affairs & Constituent Service

## Institutions

### Larry May, Chief Deputy Director

(870) 267-6300

Robert Carter, Administrator, Industry  
Mark McCown, Administrator, Agriculture  
Randy Shores, Coordinator, Emergency Preparedness  
Tiffanye Compton, Administrator Research & Planning  
Omie Futch, Administrator, Classification  
Bobby Smith, Coordinator, Policy

### Marvin Evans, Deputy Director

(870) 267-6303

Roy Agee, Coordinator, Act 309 Program  
Mary Jones, Coordinator, Vocational Education  
Tami Aiken, Coordinator, STG & PREA

### Grant Harris, Deputy Director

(870) 267-6215

Gary Hill, Coordinator, Transportation  
Sherry Glover, Coordinator, Drug Testing  
Sandra Kennedy, Coordinator, Accreditation  
Lt. Troy Moore, Supervisor, K-9 Drug/Contraband

## Health and Correctional Programs

### Wendy Kelley, Deputy Director

(870) 267-6360

Rory Griffin, Administrator, Medical Services  
Bob Parker, Administrator, Mental Health Services  
Roger Cameron, Coordinator, Alcohol & Drug Treatment  
Mark Wheeler, Administrator, Religious Services  
Sheri Flynn, Administrator, Sex Offender Assessment  
Bernstein Bullard, Coordinator, Pre-Release  
Barbara Williams, Coordinator, Inmate Grievance  
Dennice Alexander, Administrator, Inmate Library  
Lucy Flemmons, Coordinator, Volunteer Services

## Administrative Services

### Mike Carraway, Assistant Director

(870) 267-6240

Stacia Wood-Lenderman, Administrator, Human Resources  
Rhonda Patterson, Administrator, Information Systems  
Kay Skillen, Administrator, Warehouse Operations  
Richard Powell, Fiscal Support Manager  
Fred Campbell, Deputy Warden, Training Academy  
Jeff Jerry, Administrator, Accounting Control, Banking  
Rick Norton, Administrator, Accounting Operations  
Teresa Funderburg, Administrator, Procurement

## Construction/Maintenance

### Leon Starks, Assistant Director

(870) 267-6625

Chris Ashcraft, Coordinator, Maintenance  
Robert Leggett, Coordinator, Construction  
Lynn Roberts, Coordinator, Construction/Maintenance

## Correction School System

### Charles Allen, Ph.D., Chief Adm. Officer

(870) 267-6725

8000 Correction Circle, Pine Bluff, AR 71603

### Dr. Dubs Byers, Superintendent

(870) 267-6736

8000 Correction Circle, Pine Bluff, AR 71603

## Riverside Vo-Tech School

### Joe Kelnhofer, Director

(870) 267-6903

8000 Correction Circle, Pine Bluff, AR 71603

## Facilities

### Benton Unit

(501) 315-2252

**Kay Howell, Warden**  
6701 Hwy. 67, Benton, AR 72015-8488

### Cummins Unit

(870) 850-8899

**Gaylon Lay, Warden**  
P.O. Box 500, Grady, AR 71644-0500

### Delta Regional Unit

(870) 538-2000

**Jimmy Banks, Warden**  
880 East Gaines, Dermott, AR 71638-9505

### East Arkansas Regional Unit

(870) 295-4700

**Danny Burl, Warden**  
P.O. Box 180, Brickeys, AR 72320-0180

### Grimes Unit

(870) 523-8302

**Aundrea Weekly, Warden**  
300 Corrections Drive, Newport, AR 72112-33493

### J. Aaron Hawkins Sr. Center

(501) 897-1195

**Dexter Payne, Warden**  
P.O. Box 1010, Wrightsville, AR 72183-1010

### Randall L. Williams Correctional Facility

(870) 267-6800

**Mark Cashion, Warden**  
7206 West 7<sup>th</sup> Ave., Pine Bluff, AR 71603

### Maximum Security Unit

(501) 842-3800

**William Straughn, Warden**  
2501 State Farm Road, Tucker, AR 72168-8713

### McPherson Unit (Women's Unit)

(870) 523-2639

**Aundrea Weekly, Warden**  
302 Corrections Drive, Newport, AR 72112-33493

### Mississippi County Work Release

(870) 658-2214

**John Herrington, Supervisor**  
P.O. Box 10, Luxora, AR 72358-0010

### North Central Unit

(870) 297-4311

**David White, Warden**  
#10 Prison Circle, Calico Rock, AR 72519-0300

### Northwest AR Work Release Center

(479) 756-2037

**James Brooks, Supervisor**  
210 Spring St., Springdale, AR 72764-1352

### Ouachita River Correctional Unit

(501) 467-3400

**Dale Reed, Warden**  
P.O. Box 1630, Malvern, AR 72104

### Pine Bluff Unit

(870) 267-6510

**Mark Cashion, Warden**  
890 Freeline Dr., Pine Bluff, AR 71603 -1498

### Texarkana Regional Correction Center

(870) 779-3939

**Larry Cauley, Supervisor**  
305 East 5th Street, Texarkana, AR 75501

### Tucker Unit

(501) 842-2519

**Stephen Williams, Warden**  
P.O. Box 240, Tucker, AR 72168-0240

### Varner/ Varner Supermax Unit

(870) 575-1800

**Randy Watson, Warden**  
P.O. Box 600, Grady, AR 71644-0600

### Wrightsville Unit

(501) 897-5806

**Dexter Payne, Warden**  
P.O. Box 1000, Wrightsville, AR 72183-1000

## **Arkansas Board of Corrections**

**P.O. Box 20550**

**Pine Bluff, AR 71612**

**(870) 267- 6754**

**Benny Magness, Chair**

**Dr. Mary Parker, Vice-Chair**

**Janis Walmsley, Secretary**

**John Felts, Member**

**Senator Bobby Glover, Member**

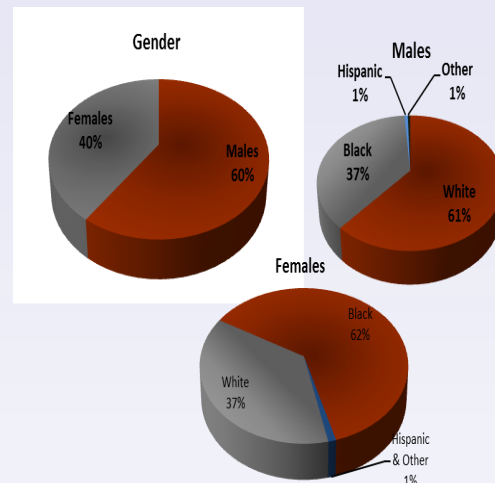
**Rev. Tyrone Broomfield, Member**

**Buddy Chadick, Member**

**Mark Colbert, Compliance Attorney**

**Shari Gray, Admin. Assistant**

## **Personnel**



## **Personnel Breakdown**

	Male	Female	Total
White	1,509	610	2,119
Black	921	1,035	1,956
Hispanic	17	9	26
Others	12	9	21
Total	2,459	1,663	4,122

See our website for  
additional information  
<http://www.adc.arkansas.gov>

## **Administration Building/Central Office**

**(870) 267-6999**

6814 Princeton Pike, Pine Bluff, AR 71602

## **Administrative Annex East Building**

**(870) 850-8510**

2403 East Harding, Pine Bluff, AR 71601