

Vision Statement: To be an honorable and professional organization through ethical and innovative leadership at all levels, providing cost efficient, superior correctional services that return productive people to the community.



Honor and Integrity in Public Service

Director's Message:

FY2012 saw a dramatic decline in Arkansas' prison population. At the close of the fiscal year, state prisons had a total population of 14,805 which is a decline of 1,726 inmates from the record high of 16,531 in November 2010. While better utilization of probation contributed to the sharp decline, it is anticipated that sentencing reforms set forth in Act 570 of 2011 will help sustain declines and save the state of Arkansas as much as \$875 million in prison construction and operating costs over the next ten years. The Department of Correction realigned its operations in FY12 with the shuttering of the Diagnostic Unit. The agency did not have the funding to operate DU and open its state-of-the-art Special Needs Unit at the Ouachita River Correctional Unit in Malvern. The Board of Corrections made the decision in November to open the SNU, which is the first of its kind in the country. ADC is proud of this new facility and the opportunities it affords the agency. As Director, I am proud of staff we have in place agency-wide and our achievements to date reflect a readiness by ADC personnel to continue to move forward and provide the citizens of Arkansas with the best correctional system possible. It is on behalf of this staff that I extend a collective thank you for the support this agency has received from the governor, the General Assembly and the Board of Corrections.

Sincerely,

Ray Hobbs



The Mission Statement of the Arkansas Department of Correction is to:

- Provide public safety by carrying out the mandates of the courts;
- Provide a safe, humane environment for staff and inmates;
- Provide programs to strengthen the work ethic;
- Provide opportunities for spiritual, mental, and physical growth.



Governor - Mike Beebe

annual report

Highlights fy 12

Special needs facility opens at Ouachita River Unit

The Arkansas Department of Correction opened its state-of-the-art special needs facility in January at the Ouachita River Correctional Unit in Malvern. The Board of Corrections approved the move of 400-plus beds from the Diagnostic Unit in Pine Bluff to Malvern.

The move resulted in the temporary closing of the Pine Bluff Diagnostic facility. ADC does not have the funds to operate both facilities, so the decision was made to utilize the new space at ORCU. The long-time goal for the unit in Pine Bluff is to renovate and reopen it at a later date. Male intake, sheltered living, special programs and permanent bed assignments moved to Malvern. Also, sheltered living beds and special management beds from the Randall Williams facility were moved, bringing the total number of inmates moved to more than 400. The special needs unit had been under construction since 2006. The addition will house 744 inmates and include a 72-bed hospital and 40-bed special services area. With the opening of the new addition, ORCU houses a total of 1,690 inmates.



ADC horse auction gallops to successful finish

Eighty-two equines from ADC units were auctioned on Nov. 19, 2011, raising \$35,195, an average of \$434.50 per horse. Proceeds from the sale went back into the farm's revenue fund. The sale helped thin ADC's 400-plus herd and make way for new colts. The public had the opportunity to view and ride the horses Nov. 18. The horses sold in the auction included colts, mules and jacks that were retiring. While some were no longer suitable for the daily routine of prison work, they were perfect for weekend pleasure and trail riding. They ranged in ages from 2 to 20. Inmates from the Wrightsville and North Central Units participated as riders and wranglers for the auction, while ADC staff from across the state assisted with the event.



Paws in Prison kicks off in four ADC units

The Arkansas Department of Correction kicked off the new Paws in Prison program in December. The Randall Williams Correctional Facility, the Maximum Security Unit, the Ouachita River Correctional Unit and the A. J. Hawkins Center for Women and the North Central Unit are participating. Paws in Prison is made possible through agreements with animal shelters and advocate groups in the state. Selected inmates have the opportunity to become trainers of rescue dogs in



the program. Inmates work with the dogs teaching them basic obedience skills and properly socializing the animals, making them more adoptable.

The benefits of this program are three-fold. The Paws in Prison program will reduce the number of animals who perish by better preparing them to be loving, obedient and adoptable pets. The program will give inmates the skills necessary to support successful rehabilitation and reentry – and ultimately improve public safety. At the same time, this is an opportunity for the inmates to do something positive for the communities of Arkansas. Other states with similar programs, have had a profound impact on inmates and staff, thus improving security and the quality of life inside the institutions.



Arkansas Legislative Session passed Act 570

Act 570 of 2011 is designed to slow the growth of the inmate population in Arkansas prisons. The law has many components, but it primarily authorized revisions in sentencing guidelines, the hiring of new probation officers and implementation of programs aimed at slowing the revolving door of prisoners leaving and returning to prison. It also puts an emphasis on making sure programs offered to inmates are sound in structure and evidence-based, meaning success must be proven.

Prison libraries benefit from donations of books

ADC Library Services received more than 30,000 books due to the closing of a book store and libraries. ADC typically receives approximately 3,000 donated books each year, so the FY12 windfall will bolster book availability system-wide. As books become worn out and removed, some ADC libraries run short on titles and selection. The new supply of books will take time to process, but should alleviate this issue for a period of time.



Budget fy 12

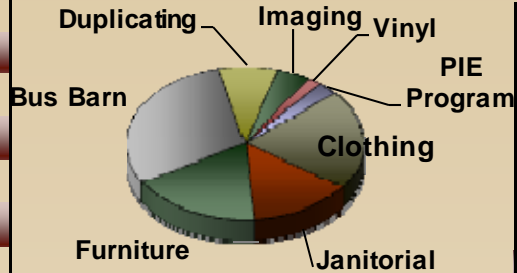
Construction Expenditures

Construction, Equipment Shed	\$ 2,054
Construction, Office Expansion	7,344
Construction, Parking Lot Expansion	5,880
Construction, Fence Expansion	16,046
Cummins Unit, Main Gate Relocation	12,344
Cummins/Tucker Units, Pods	768,514
Delta Unit, Fence Entrance to Main	12,179
Delta Unit, Generator	183,489
East AR Unit, Lethal Fence	240,133
Energy Efficiency Projects	45,467
McPherson Unit, Expansion	2,123,862
McPherson Unit, Road Expansion	2,134
Newport, Dog Kennel	988
Newport, Gate House	1,721
North Central, Expansion Phase I	1,069,396
North Central, Expansion Phase II	72,182
ORCU, Fuel Station	6,464
ORCU, Special Needs Unit	1,145,983
Pine Bluff Unit, Armory - Building	17,307
Pine Bluff Unit, Armory - Fence	4,429
Pine Bluff Unit, Generator	56,814
Tucker/Tucker Max Units, Generators	67,313
Tucker Max Unit, Firing Range	49,341
Tucker Unit, Chapel Renovation	14,572
Tucker Unit, Fence Detection System	144,996
Tucker Unit, FreeLine House Renov.	31,233
Tucker Unit, Shower Expansion	24,049
Tucker, Waste Water Treatment	3,078,556
Tucker Unit, Gas Line Replacement	59,202
Various Units, HVAC/Chillers/Boilers	52,495
Varner Unit, ADA Sidwalk	13,448
Varner Unit, Training Center	30,864
Wville/Hwkn, Lift Statn Pump Gener.	49,097
Total Expenditures	\$ 9,409,896

Funding

General Revenue	\$ 320,877,549
Work Release	4,323,276
Agriculture	15,100,000
Industry	10,200,000
Total	\$ 350,500,825

Industry Revenue



Clothing	\$1,372,015
Janitorial	960,606
Furniture	1,208,586
Bus Barn	1,981,777
Graphic Arts	549,945
Imaging	300,055
Vinyl	128,027
PIE Program	191,466
Total	\$ 6,692,477

Average Inmate Cost

	Per Day	Per Year
2001	40.79	14,888.35
2002	42.59	16,100.15
2003	44.11	15,545.35
2004	47.32	17,271.80
2005	48.24	17,607.60
2006	52.12	19,023.80
2007	54.82	20,009.30
2008	57.13	20,852.45
2009	60.19	21,969.35
2010	60.03	21,910.95
2011	59.70	21,790.50
2012	61.83	22,567.95

Care & Custody

	Operating Expenditures
2001	175,717,556
2002	182,187,792
2003	185,682,413
2004	209,542,704
2005	215,042,365
2006	243,207,957
2007	253,342,707
2008	272,844,471
2009	280,135,153
2010	288,888,121
2011	303,606,007
2012	320,877,549

Agriculture Programs

Unit	Acres	Program
Cummins	14,597	Crops, Garden, Livestock
Tucker	3,771	Row crops, Garden
Wrightsville	5,000	Livestock
East AR Reg.	2,500	Cotton, Wheat, Soybean
Ouachita	100	Garden, Livestock
Newport	159	Garden, Livestock
N. Central	179	Orchard, Garden, Livestock
Pine Bluff	359	Garden, Livestock

Total Acreage 26,665

Federal Grants Received

Residential Substance Abuse (R10-190)	\$ 34,077
Residential Substance Abuse (MG11-1908R)	2,000
Residential Substance Abuse (R11-190-RS10)	31,745
State Criminal Alien Asst. Program (SCAAP) 2011	403,867
Bulletproof Vest Partnership Program (BVP)	524
FEMA 1975 DR AR (Declared Disasters)	52,498
FEMA 1975 DR AR (Declared Disasters)	44,655
FEMA 1975 DR AR (Declared Disasters)	5,095
Total Received	\$ 574,461

Demographics fy 12

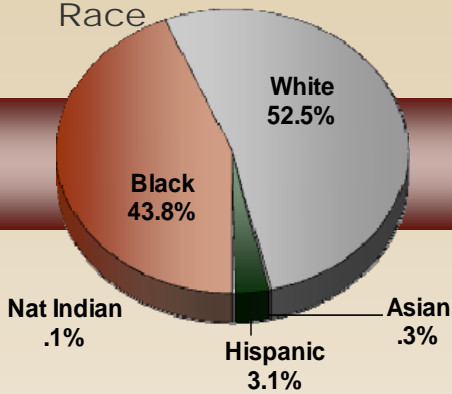
Top 10 Admission Offenses

Offense	Total	Avg Sentence
Controlled Substance	1,714	8y 4m 0d
Theft	758	7y 2m 15d
Slander	538	9y 1m 14d
Assault & Battery	461	8y 4m 9d
Sexual Offenses	367	17y 7m 2d
Obstructing Gov. Oper.	348	5y 10m 19d
Robbery	332	12y 0m 23d
Forgery	234	5y 7m 5d
Offense Involving Family	215	5y 0m 12d
Burglary	205	5y 9m 5d

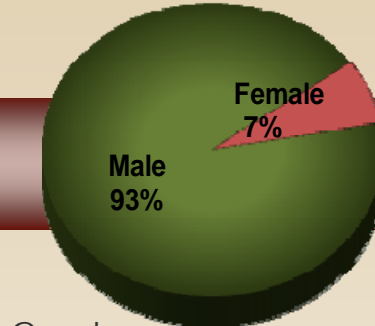
Top 10 Stock Population Offenses

Offense	Total	Avg Sentence
Controlled Substance	2,761	15y 7m 11d
Sexual Offenses	2,427	25y 9m 23d
Homicide	2,067	36y 8m 1d
Aggrav. Robbery	1,304	29y 0m 6d
Slander	854	14y 11m 10d
Assault & Battery	765	17y 9m 19d
Robbery	732	29y 0m 6d
Theft	710	10y 3m 14d
Gang Related	398	23y 4m 0d
Obstruct. Gov Oper.	371	8y 4m 4d

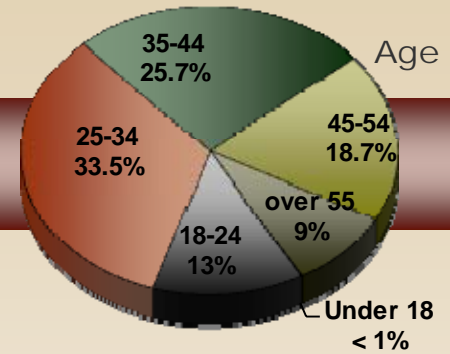
Race



Gender



Age

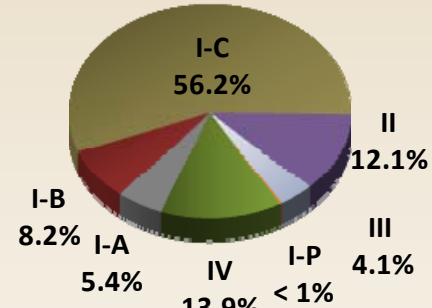


FY12 Releases

Average Sentence Data

	Male	Female	Total		Male	Female	Total
Asian	33	4	37	Sent.	10y 10m 17d	8y 0m 0d	10y 6m 25d
				Stay	3y 5m 20d	1y 2m 27d	3y 2m 23d
Black	2,308	155	2,463	Sent.	9y 9m 5d	6y 6m 1d	9y 6m 21d
				Stay	4y 9m 21d	2y 8m 9d	4y 8m 3d
Hispanic	183	15	198	Sent.	7y 11m 0d	6y 5m 18d	7y 9m 19d
				Stay	2y 6m 7d	1y 6m 20d	2y 5m 11d
NA Indian	13	5	18	Sent.	6y 2m 23d	6y 10m 24d	6y 5m 0d
				Stay	2y 10m 14d	2y 1m 24d	2y 8m 1d
Mexican	11	0	11	Sent.	7y 7m 19d	0	7y 7m 19d
				Stay	3y 6m 0d	0	3y 6m 0d
Other	5	0	5	Sent.	8y 9m 18d	0	8y 9m 18d
				Stay	5y 3m 19d	0	5y 3m 19d
Caucasian	3,332	553	3,885	Sent.	8y 2m 1d	6y 7m 22d	7y 11m 12d
				Stay	3y 8m 27d	2y 1m 21d	3y 6m 3d
Total	5,886	732	6,618	Sent.	8y 9m 17d	6y 7m 13d	8y 6m 20d
				Stay	4y 1m 13d	2y 2m 27d	3y 11m 0d

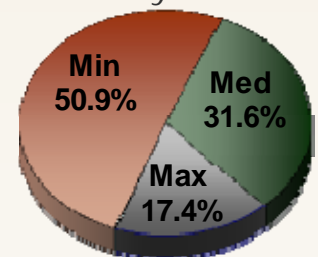
Good Time Class



Population - 6/30/2012

Custody - 14,064
Jurisdiction - 14,805
Average Daily - 16,057

Custody Class



Unclassified < 1%

Admissions fy 12

County	Males			Females		
	B	W		B	W	
Arkansas	24	9	0.5%	1	4	0.1%
Ashley	42	29	1.1%	4	5	0.1%
Baxter	1	64	1.0%	0	8	0.1%
Benton	10	279	4.4%	0	32	0.5%
Boone	1	54	0.8%	0	10	0.2%
Bradley	11	10	0.3%	1	3	0.1%
Calhoun	4	3	0.1%	0	0	0.0%
Carroll	38	3	0.6%	3	0	0.0%
Chicot	23	8	0.5%	0	2	0.0%
Clark	27	20	0.7%	2	0	0.0%
Clay	0	38	0.6%	0	5	0.1%
Cleburne	9	34	0.7%	0	3	0.0%
Cleveland	2	12	0.2%	0	3	0.0%
Columbia	22	4	0.4%	3	0	0.0%
Conway	16	21	0.6%	0	2	0.0%
Craighead	74	88	2.5%	9	9	0.3%
Crawford	8	150	2.4%	1	18	0.3%
Crittenden	129	62	2.9%	7	9	0.2%
Cross	8	10	0.3%	1	1	0.0%
Dallas	8	3	0.2%	0	0	0.0%
Desha	14	4	0.3%	0	0	0.0%
Drew	31	24	0.8%	0	1	0.0%
Faulkner	69	123	2.9%	4	8	0.2%
Franklin	2	39	0.6%	0	4	0.1%
Fulton	1	20	0.3%	0	1	0.0%
Garland	77	113	2.9%	5	16	0.3%
Grant	3	29	0.5%	1	9	0.2%
Greene	9	86	1.5%	0	10	0.2%
Hempstead	34	22	0.9%	0	3	0.0%
Hot Springs	26	54	1.2%	0	15	0.2%
Howard	32	40	1.1%	1	3	0.1%
Independence	12	45	0.9%	0	8	0.1%
Izard	0	12	0.2%	0	2	0.0%
Jackson	15	35	0.8%	3	11	0.2%
Jefferson	140	32	2.6%	9	4	0.2%
Johnson	10	74	1.3%	0	7	0.1%
Lafayette	14	3	0.3%	0	0	0.0%
Lawrence	3	29	0.5%	0	1	0.0%
Lee	3	2	0.1%	0	0	0.0%

County	Males			Females		
	B	W		B	W	
Lincoln	4	3	0.1%	1	0	0.0%
Little River	27	34	0.9%	4	8	0.2%
Logan	3	31	0.5%	0	8	0.1%
Lonoke	28	89	1.8%	2	14	0.2%
Madison	0	25	0.4%	0	0	0.0%
Marion	9	9	0.3%	0	2	0.0%
Miller	86	67	2.3%	7	19	0.4%
Mississippi	82	38	1.8%	2	2	0.1%
Monroe	18	3	0.3%	1	1	0.0%
Montgomery	0	8	0.1%	0	0	0.0%
Nevada	10	6	0.2%	1	0	0.0%
Newton	0	8	0.1%	0	0	0.0%
Ouachita	39	6	0.7%	0	1	0.0%
Perry	0	13	0.2%	0	0	0.0%
Phillips	14	6	0.3%	1	2	0.0%
Pike	3	19	0.3%	0	5	0.1%
Poinsett	5	28	0.5%	0	4	0.1%
Polk	1	20	0.3%	0	5	0.1%
Pope	28	135	2.5%	3	25	0.4%
Prairie	5	6	0.2%	0	1	0.0%
Pulaski	543	218	11.6.0%	36	31	1.0%
Randolph	2	22	0.4%	0	03	0.0%
St Francis	29	9	0.6%	0	1	0.0%
Saline	18	74	1.4%	2	12	0.2%
Scott	13	3	0.2%	4	0	0.1%
Searcy	2	4	0.1%	0	0	0.0%
Sebastian	169	389	8.5%	14	82	152%
Sevier	11	50	0.9%	2	3	0.1%
Sharp	0	17	0.3%	0	4	0.1%
Stone	0	31	0.5%	0	2	0.0%
Union	76	26	1.6%	2	2	0.1%
Van Buren	0	22	0.3%	0	1	0.0%
Washington	72	26	6.9	3	38	0.2%
White	34	92	1.9%	0	14	0.3%
Woodruff	2	2	0.1%	0	0	0.0%
Yell	0	33	0.5%	0	3	0.0%
Inter. St. Comp.	0	0	0.0%	0	0	0.0%
Unknown	2	1	0.0%	0	0	0.0%

Males = 5,900 Females = 647 Total Intakes = 6,547

**Average County Jail Backup - 638
Average County 309 Contract - 298**

Directory 12

Ray Hobbs, Director (870) 267-6200

Jada Lawrence, Assistant to the Director
Jan Scussel, Staff Attorney
Raymond Naylor, Administrator, Internal Affairs
Frank Ellis, Audit Manager
Donna Stout, EEOC Officer

Institutions

Larry May, Chief Deputy Director (870) 267-6300
John Kleiner, Coordinator, Emergency Preparedness
Jerry Campbell, Administrator, Industry
Mark McCown, Administrator, Agriculture

Grant Harris, Assistant Director (870) 267-6215

Gary Hill, Coordinator, Transportation
Sherry Glover, Coordinator, Drug Testing
Sandra Kennedy, Coordinator, Accreditation
Lt. Troy Moore, Supervisor, K-9 Drug/Contraband

Public Services Division

Dina Tyler, Assistant Director
Tiffanye Compton, Administrator, Research and Planning
Brenda Wilson, Analyst, Research and Planning
Shea Wilson, Administrator, Communications
Bobby Smith, Coordinator, Policies
Ida Works, Constituent Services
Dennice Alexander, Administrator, Inmate Library
Lucy Flemmons, Coordinator, Volunteer Services

Health and Correctional Programs

Wendy Kelley, Deputy Director (870) 267-6360
Rory Griffin, Administrator, Medical Services
Bob Parker, Administrator, Mental Health Services
Roger Cameron, Coordinator, Alcohol & Drug Treatment
Mark Wheeler, Administrator, Religious Services
Sheri Flynn, Administrator, Sex Offender Assessment
Bernstein Bullard, Coordinator, Pre-Release
Barbara Williams, Coordinator, Inmate Grievance

Institutional Operations

Marvin Evans, Deputy Director (870) 267-6303
Roy Agee, Coordinator, Act 309 Program
Mary Jones, Coordinator, Vocational Education
Omie Futch, Administrator, Classification
Gary Musselwhite, Coordinator, STG & PREA

Administrative Services

Sheila Sharp, Deputy Director (870) 267-6240
Stacia Wood-Lenderman, Administrator, Human Resources
Kay Skillen, Administrator, Warehouse Operations
Richard Powell, Fiscal Support Manager
Jeff Jerry, Administrator, Accounting Control, Banking
Rick Norton, Administrator, Accounting Operations
Rhonda Patterson, Administrator, Information Systems
Teresa Funderburg, Administrator, Procurement

Construction/Maintenance

Leon Starks, Assistant Director (870) 267-6625
Chris Aschraft, Coordinator, Maintenance
Robert Leggett, Coordinator, Construction
Lynn Roberts, Coordinator, Construction/Maintenance

Correction School System

Charles Allen, Ph.D., Chief Adm. Officer (870) 267-6725
8000 Correction Circle, Pine Bluff, AR 71603

Riverside Vo-Tech School
Joe Kelnhofer, Director (870) 267-6903
8000 Correction Circle, Pine Bluff, AR 71603

AR Correctional School
Dubs Byers, Superintendent (870) 267-6736
8000 Correction Circle, Pine Bluff, AR 71603

Facilities
Benton Unit (501) 315-2252
Randy Watson, Warden
6701 Hwy. 67, Benton, AR 72015-8488

Cummins Unit (870) 850-8899
Gaylon Lay, Warden
P.O. Box 500, Grady, AR 71644-0500

Delta Regional Unit (870) 538-2000
Kay Howell, Warden
880 East Gaines, Dermott, AR 71638-9505

East Arkansas Regional Unit (870) 295-4700
Danny Burl, Warden
P.O. Box 180, Brickeys, AR 72320-0180

Grimes Unit (870) 523-8302
John Maples, Jr., Warden
300 Corrections Drive, Newport, AR 72112-33493

J. Aaron Hawkins Sr. Center (501) 897-1195
Greg Harmon, Warden
P.O. Box 1010, Wrightsville, AR 72183-1010

Randall L. Williams Correctional Facility (870) 267-6800
Mark Cashion, Warden
7206 West 7th Ave., Pine Bluff, AR 71603

Maximum Security Unit (501) 842-3800
Billy Straughn, Warden
2501 State Farm Road, Tucker, AR 72168-8713

McPherson Unit (Women's Unit) (870) 523-2639
John Maples, Jr., Warden
302 Corrections Drive, Newport, AR 72112-33493

Mississippi County Work Release (870) 658-2214
Charles Stewart, Supervisor
P.O. Box 10, Luxora, AR 72358-0010

North Central Unit (870) 297-4311
David White, Warden
#10 Prison Circle, Calico Rock, AR 72519-0300

Northwest AR Work Release Center (479) 756-2037
James Brooks, Supervisor
210 Spring St., Springdale, AR 72764-1352

Ouachita River Correctional Unit (501) 467-3400
Dale Reed, Warden
P.O. Box 1630, Malvern, AR 72104

Pine Bluff Unit (870) 267-6510
Mark Cashion, Warden
890 Freeline Dr., Pine Bluff, AR 71603-1498

Texarkana Regional Correction Center (870) 779-3939
Larry Cauley, Supervisor
305 East 5th Street, Texarkana, AR 75501

Tucker Unit (501) 842-2519
Stephen Williams, Warden
P.O. Box 240, Tucker, AR 72168-0240

Varner/ Varner Supermax Unit (870) 575-1800
Jimmy Banks, Warden
P.O. Box 600, Grady, AR 71644-0600

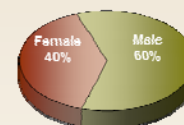
Wrightsville Unit (501) 897-5806
Greg Harmon, Warden
P.O. Box 1000, Wrightsville, AR 72183-1000

Arkansas Board of Corrections
P.O. Box 20550
Pine Bluff, AR 71612
(870) 267- 6754

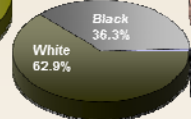
Benny Magness, Chair
Dr. Mary Parker, Vice-Chair
Janis Walmsley, Secretary
John Felts, Member
Drew Alan Baker, Member
Bobby Glover, Member
Tyrone Broomfield, Member
Mark Colbert, Compliance Attorney
Shari Gray, Admin. Assistant

Personnel

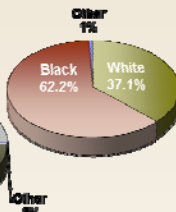
Gender



Males



Females



Personnel Ethnic Breakdown

	Male	Female	Total
White	1,572	616	2,188
Black	908	1,032	1,940
Hispanic	11	7	18
Others	10	5	15
Total	2,501	1,660	4,161

See our website for additional information
<http://www.adc.arkansas.gov>

Administration Building/Central Office (870) 267-6999
6814 Princeton Pike, Pine Bluff, AR 71602

Administrative Annex East Building (870) 850-8510
2403 East Harding, Pine Bluff, AR 71601