

2  
0  
0  
9

# Arkansas Recidivism Study

**Tiffanye Compton, M. S., Research & Planning Administrator**  
**Chris Burkey, M.A./PhD. Student/Research Analyst**  
**Nichole Mettот, Administrative Analyst**

**2012**

## Highlights/Summary

1. Overall Recidivism Rate dropped from 44.9% in CY2008 to 41.6% in CY2009, a decrease of 3.3% percentage points.
2. At a three-year post release, 2009 overall recidivism rates increased from 8.3% the first six months to 41.6% in three years, a 33.3% overall increase (Table 1, pg. 2).
3. Recidivism rate, at 42% over three years for paroled inmates, was significantly higher in 2009 than that of discharged inmates at 20.7% (Table 2, pg. 3).
4. ADC inmates are released on parole with supervision or discharged. Their return rates throughout the three-year post return with Parole Return rates at 6 months was 10.8% increasing to 45.7% by the three-year post return. The Discharge Return rate was 2.1% at 6 months and ended at the three-year post return with 20.0% (Table 2, pg. 3).
5. Parole Violators with New Sentences, within three-year post release, accounted for 61% of the recidivists and Parole Violators with Technical Violations accounted for 33%, while Discharges with New Sentences only accounted for 6%.
6. 2009 Recidivism rates for male offenders show a three-year post release return rate of 43.4% as compared to 27.8% for females (Table 4, pg. 6).
7. An overall three-year post release for 2009 demonstrates that 42.7% of blacks and 42% of whites returned to prison. The recidivism rates for blacks and whites decreased by 4.7 points and 2.6 points respectively from the previous year (Table 5, pg. 9).
8. For 2009 releases within a three-year post release and a return to prison, both males and females within the cohort range of 25-34 demonstrated the highest total return rates, with ages 35-44 coming in second (Table 6 & 7 pgs. 9 & 10).
9. Recidivism rates are shown for all the number of offenses released and number of returns in that specific category (Table 8, pgs. 11 & 12).

Public Services Division, Research and Planning, Arkansas Department of Correction  
P. O. Box 8707, Pine Bluff, AR 71602, Telephone (870) 267-6335

**Ray Hobbs, Director**

**Dina Tyler, Assistant Director**



## Arkansas' Recidivism Study (Addendum)

The **2009** Recidivism research is an addendum to the original **1997-1999** study produced in 2003 and to the addendums through **2008**, produced in prior years. This addendum was prepared by the Arkansas Department of Correction's Research and Planning Section. The addendum reviews the return rates of inmates released from custody in **CY2009**, as compared to prior years. The data for this research was obtained from the ADC electronic Offender Management Information System (eOMIS). If an individual was released **January 1, 2009, through December 31, 2009**, the data provided reflect returns for a full three-year post release. All charts and tables reflect a three-year post release review and are utilized strictly for clarity and ease to the reader.

The study is categorized into return rates of six (6) months, one (1) year, and three (3) years. As with the **2008** addendum regarding a three-year post release of inmates produced in **2011**, the ADC Research and Planning Section will continue to study, track and update trends in release/return annually.

### Overall Recidivism Rates

As demonstrated, Table 1 shows the overall ADC **2009** recidivism rates. The post-release period consists of six months, one year and three years, from **2000** through **2009**. In **2009**, there was a total of **6,585** inmates released from ADC. Within six months of release, **8.3%** returned to prison. Within one year **20.4%** inmates returned and within three years **41.6%** had returned to prison. ADC's recidivism rate, averaged for the last ten years, is **45.1%**.

*\*In all tables, the "number of releases" is the number of unduplicated releases in a given year used to generate recidivism rates. Table 1 does not specify the type of return. It demonstrates an overall return rate, regardless of reason.*

Table 1

Overall Recidivism Rates								
Release	Total Number	% Returned	# Returned	% Returned	# Returned	% Returned	# Returned	Total %
Year	Releases	6 Months	6 Months	1 Year	1 Year	3 Years	3 Years	Returns
2000	5872	14.2%	834	29.0%	1701	51.8%	3040	<b>51.8%</b>
2001	5962	15.9%	948	29.7%	1771	51.4%	3066	<b>51.4%</b>
2002	6015	15.1%	911	28.5%	1716	49.4%	2969	<b>49.4%</b>
2003	6135	12.9%	792	25.9%	1586	47.4%	2905	<b>47.4%</b>
2004	6244	11.2%	698	22.1%	1377	44.4%	2772	<b>44.4%</b>
2005	5657	7.4%	418	18.3%	1036	41.4%	2344	<b>41.4%</b>
2006	5505	6.4%	355	17.1%	943	37.4%	2060	<b>37.4%</b>
2007	5783	6.2%	359	15.2%	881	40.3%	2330	<b>40.3%</b>
2008	6305	7.5%	475	20.2%	1275	44.9%	2831	<b>44.9%</b>
2009	6585	8.3%	547	20.4%	1343	41.6%	2742	<b>41.6%</b>
Averages	6,006	10.6%	634	22.7%	1363	45.1%	2706	<b>45.1%</b>

## **Recidivism Rates: Release Type**

Table 2 demonstrates recidivism rate by type of release. ADC releases inmates by parole with supervision, which is granted by the Parole Board, or by discharge (max flat of sentence). In **2009**, there were **6,421** released by regular parole and **164** inmates discharged. Results indicate that within six months of release in **2009**, **543** inmates or **8.5%** of the inmates released on parole had returned, while only **4** or **2.4%** of the inmates discharged returned with a new sentence. Total returns of parole releases from ADC in **2009** show a **42.0%** return rate, while discharges reflects a **20.7%** return rate.

Table 2

<b>Recidivism Rates By Type of Release-2009</b>								
<b>Year</b>	<b>Type of Release</b>	<b>Total Releases</b>	<b>6 Mths Returns</b>	<b>% Returns</b>	<b>1 Year Returns</b>	<b>% Returns</b>	<b>3 Years Returns</b>	<b>% Returns</b>
2000	Paroled - Regular	5,691	832	14.6%	1,691	29.7%	3,005	52.8%
	Discharge	181	2	1.1%	10	5.5%	35	19.3%
2001	Paroled - Regular	5,778	947	16.4%	1,762	30.5%	3,042	52.6%
	Discharge	184	1	0.5%	9	4.9%	24	13.0%
2002	Paroled - Regular	5,841	910	15.6%	1,707	29.2%	2,938	50.3%
	Discharge	174	1	0.6%	9	5.2%	31	17.8%
2003	Paroled - Regular	5,958	788	13.2%	1,577	26.5%	2,861	48.0%
	Discharge	177	4	2.3%	9	5.1%	43	24.3%
2004	Paroled - Regular	6,075	693	11.4%	1,368	22.5%	2,735	45.0%
	Discharge	169	5	3.0%	9	5.3%	37	21.9%
2005	Paroled - Regular	5,505	413	7.5%	1,025	18.6%	2,317	42.1%
	Discharge	152	5	3.3%	11	7.2%	27	17.8%
2006	Paroled - Regular	5,358	350	6.5%	931	17.4%	2,020	37.7%
	Discharge	147	5	3.4%	12	8.2%	40	27.2%
2007	Paroled - Regular	5,623	357	6.3%	872	15.5%	2,293	40.8%
	Discharge	160	2	1.3%	9	5.6%	37	23.1%
2008	Paroled - Regular	6,160	469	7.6%	1,262	20.5%	2,808	45.6%
	Discharge	145	6	4.1%	13	9.0%	23	15.9%
2009	Paroled - Regular	6,421	543	8.5%	1329	20.7%	2694	42.0%
	Discharge	164	4	2.4%	15	9.1%	34	20.7%
Total Paroled - Regular		58,410	6,302	10.8%	3524	23.2%	26,713	45.7%
Total Discharged		1653	35	2.1%	106	6.4%	331	20.0%

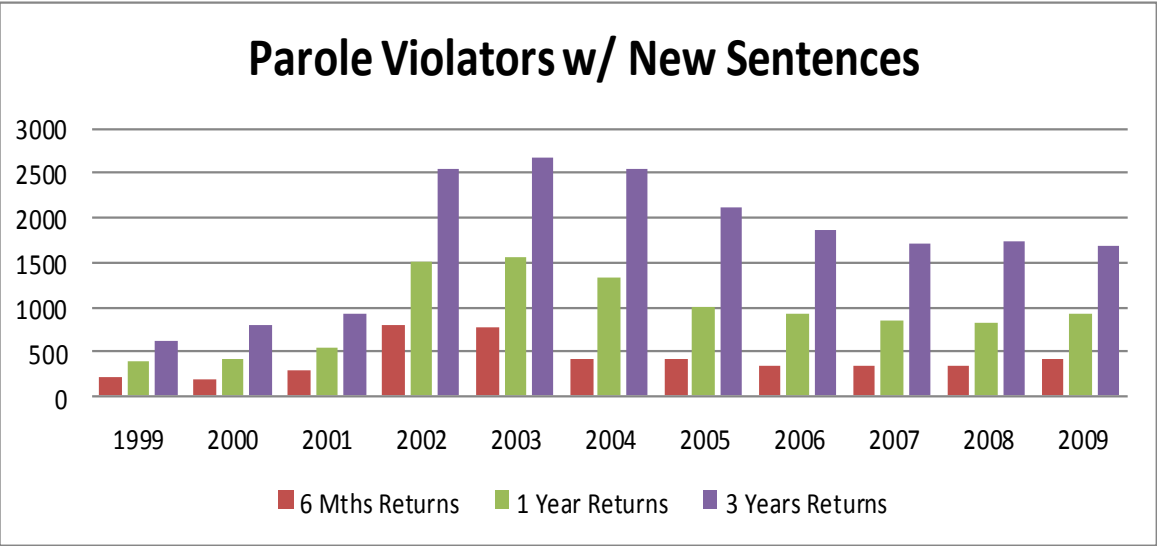
Table 3.

Recidivism Of Parolees And Discharges-2009								
Year	Total	Type of	6 Mths	%	1 Year	%	3 Years	%
	Releases	Return	Returns	Returns	Returns	Returns	Returns	Returns
2000	5872	PV/New Sentence	196	3.3%	424	7.2%	795	13.5%
		PV/Technical	633	10.8%	1254	10.6%	2078	14.0%
		Discharge - Reconviction	5	0.1%	23	0.4%	167	2.9%
2001	5962	PV/New Sentence	283	4.7%	540	9.1%	913	15.3%
		PV/Technical	663	11.1%	1211	20.3%	1972	33.1%
		Discharge - Reconviction	2	0.0%	20	0.3%	181	3.0%
2002	6015	PV/New Sentence	793	13.2%	1516	25.2%	2549	42.4%
		PV/Technical	113	1.9%	174	2.9%	215	3.6%
		Discharge - Reconviction	5	0.1%	26	0.4%	205	3.4%
2003	6135	PV/New Sentence	785	12.8%	1558	25.4%	2668	43.5%
		Discharge - Reconviction	7	0.1%	28	0.5%	237	3.9%
2004	6244	PV/New Sentence	686	11.0%	1341	21.5%	2535	40.6%
		Discharge - Reconviction	12	0.2%	36	0.6%	237	3.8%
2005	5657	PV/New Sentence	407	7.2%	999	17.7%	2120	37.5%
		Discharge - Reconviction	11	0.2%	37	0.7%	224	4.0%
2006	5505	PV/New Sentence	346	6.3%	918	16.7%	1868	33.9%
		Discharge - Reconviction	9	0.2%	25	0.5%	192	3.5%
2007	5783	PV/New Sentence	352	6.1%	850	14.7%	1708	29.5%
		PV/Technical	1	0.0%	10	0.2%	454	7.9%
		Discharge - Reconviction	6	0.1%	21	0.4%	168	2.9%
2008	6305	PV/New Sentence	345	5.5%	818	13.0%	1732	27.5%
		PV/Technical	122	1.9%	427	6.8%	925	14.7%
		Discharge - Reconviction	8	0.1%	30	0.5%	174	2.8%
		PV/New Sentence	403	6.1%	911	13.8%	1665	25.3%
2009	6585	PV/Technical	138	2.1%	404	6.1%	916	13.9%
		Discharge - Reconviction	6	0.1%	28	0.4%	161	2.4%

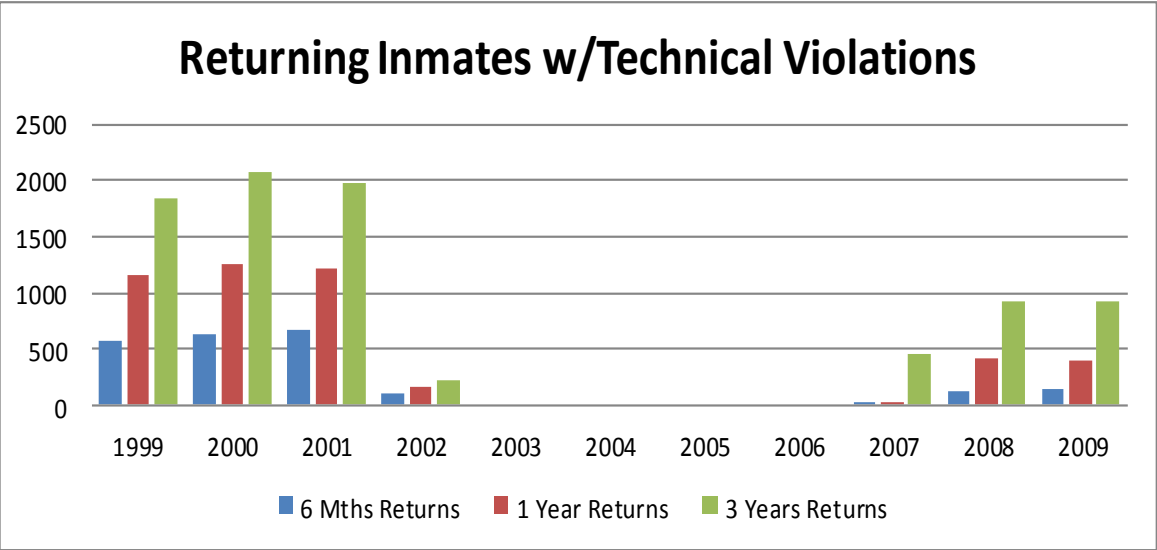
### **Recidivism Rates: (Return Types) Parolees and Discharges**

Table 3 and Figures 3, 3-1 and 3-2 show inmates that return to prison for parole violations with a new sentence (s); or parole violators returning with a technical violation (s); and discharges (reconvicted inmates) that returned to prison as a new commitment with a new sentence. Although the number of technical violators returned to ADC since the opening of the Omega Technical Parole Violators Center has decreased, the number returned in **2009** has increased from its lowest number in **2007**. Even though a new conviction might also have a technical violation attached, the new conviction on most cases will supersede the technical violation, making the new conviction the primary reason for returning to prison.

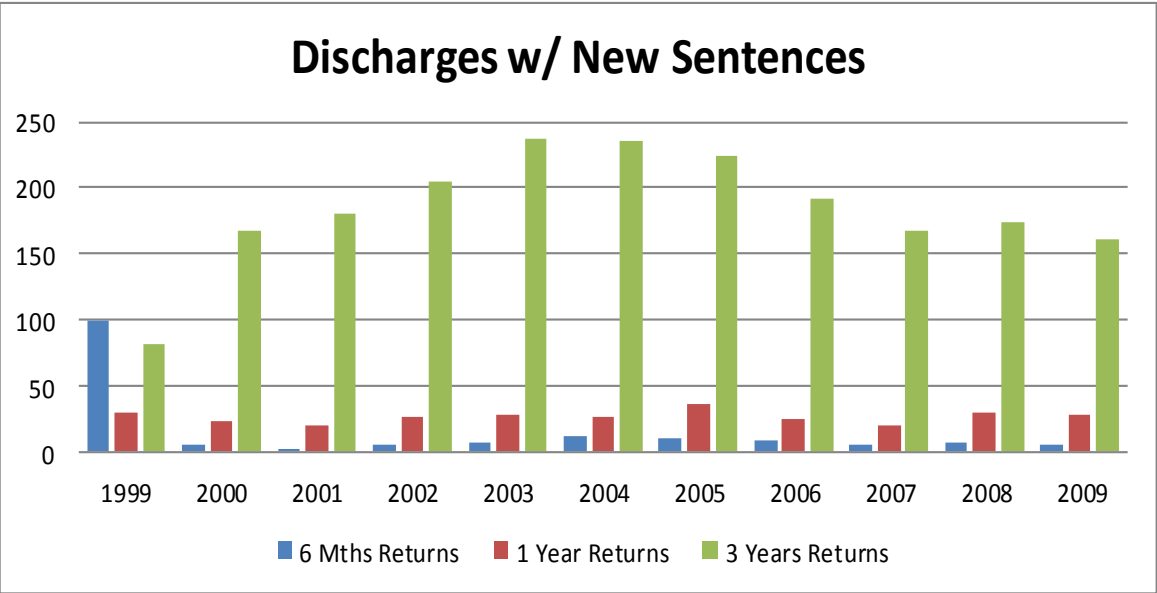
3. Fig. 1



3. Fig. 2



3. Fig. 3



## **Recidivism Rates: Gender**

Table 4 , 4-1, 4-2 exhibits recidivism rates by gender. In **2009**, males increased in return rates over the three-year post release time frame. From six months to one year, data demonstrated a constant return rate for both males and females; however, by the end of the third year there was a significant increase in males returning to prison.

Table 4

<b>Recidivism Rates By Gender</b>									
<b>Year</b>	<b>Gender</b>	<b>Total</b>	<b>6 month</b>	<b>Total %</b>	<b>1 Year</b>	<b>Total %</b>	<b>3 Years</b>	<b>Total %</b>	<b>Total Inmates</b>
		<b>Releases</b>	<b>Return</b>	<b>Returns</b>	<b>Returns</b>	<b>Returns</b>	<b>Returns</b>	<b>Returns</b>	<b>Not Returning</b>
2000	Female	652	75	11.5%	158	24.2%	264	40.5%	388
	Male	5,220	759	14.5%	1,543	29.6%	2,766	53.0%	2,454
2001	Female	625	81	13.0%	140	22.4%	260	41.6%	365
	Male	5,337	867	16.2%	1,631	30.6%	2,806	52.6%	2,531
2002	Female	594	67	11.2%	134	22.6%	242	40.7%	320
	Male	5,421	844	15.6%	1,582	29.2%	2,727	50.3%	2,426
2003	Female	616	54	8.8%	111	18.0%	215	34.9%	401
	Male	5,519	738	13.4%	1,475	26.7%	2,690	48.7%	2,829
2004	Female	551	31	5.6%	56	10.2%	139	25.2%	413
	Male	5,693	667	11.8%	1,321	23.2%	2,633	46.2%	3,060
2005	Female	534	15	2.8%	44	8.2%	123	23.0%	411
	Male	5,124	403	7.9%	992	19.4%	2,221	43.3%	2,903
2006	Female	614	18	2.9%	57	9.3%	137	22.3%	477
	Male	4,891	337	6.9%	886	18.1%	1,923	39.3%	2,968
2007	Female	675	21	3.1%	53	7.9%	158	23.4%	517
	Male	5,783	338	5.8%	828	14.3%	2,172	37.6%	3,611
2008	Female	735	27	3.7%	87	11.8%	211	28.7%	524
	Male	5,570	448	5.0%	1,188	21.3%	2,620	47.0%	2,950
2009	Female	755	41	5.4%	99	13.1%	210	27.8%	545
	Male	5,830	506	8.7%	1245	21.4%	2533	43.4%	3297

Figure 4

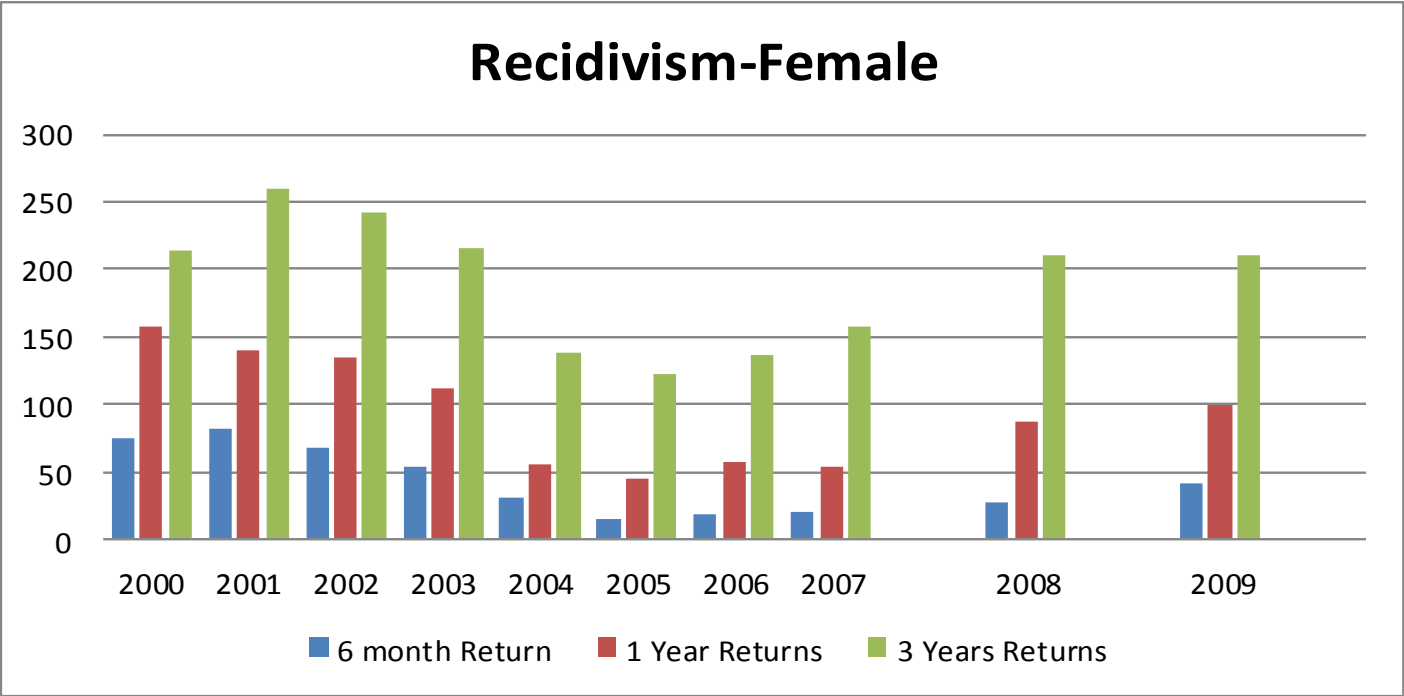


Figure 4.1

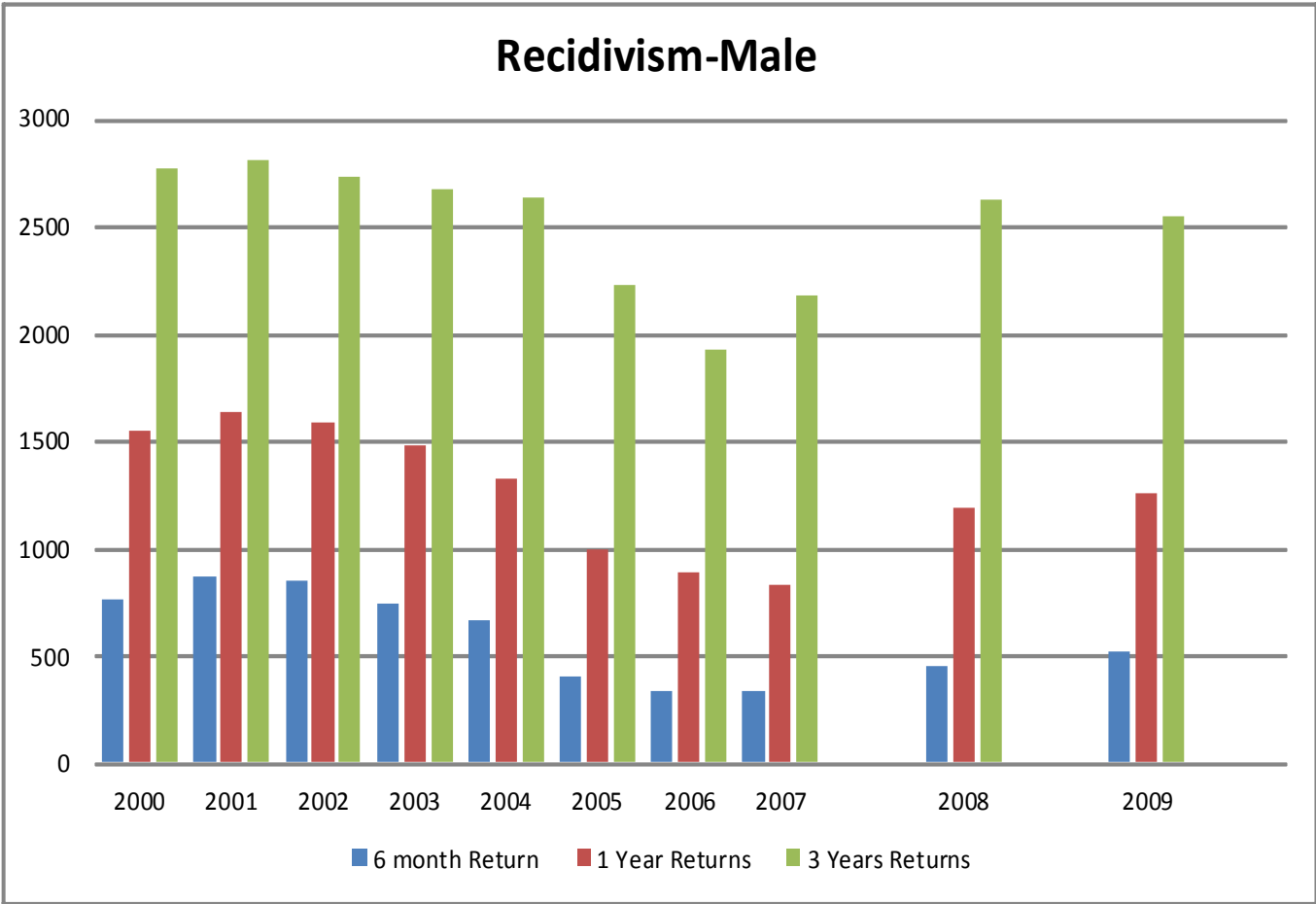


Table 5

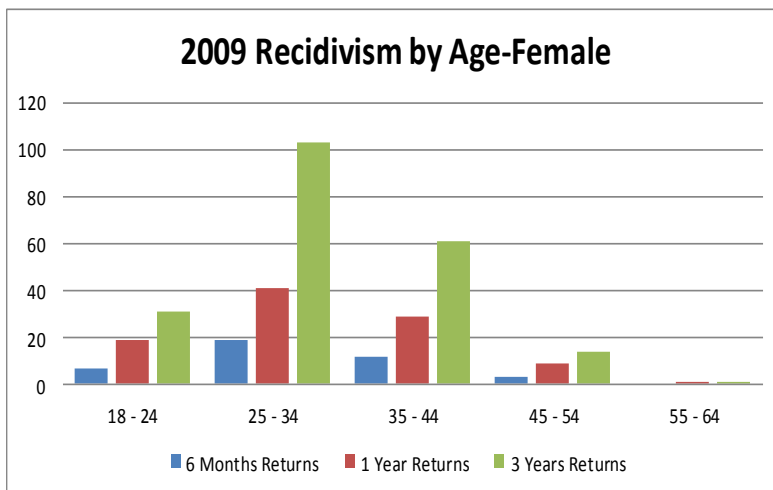
2009 Recidivism Rates By Race								
Year	Race	Total	6 Month	%	1 Year	%	3 Years	%
		Releases	Returns	Returns	Returns	Returns	Returns	Returns
2000	Black	2,756	401	14.6%	817	29.6%	1,512	54.9%
2000	Hispanic	66	6	9.1%	10	15.2%	16	24.2%
2000	Other	62	4	6.5%	5	8.1%	9	14.5%
2000	White	2,988	423	14.2%	869	29.1%	1,503	50.3%
2001	Black	2,718	463	17.0%	839	30.9%	1,476	54.3%
2001	Hispanic	64	3	4.7%	10	15.6%	18	28.1%
2001	Other	45	3	6.7%	4	8.9%	8	17.8%
2001	White	3,135	479	15.3%	918	29.3%	1,564	49.9%
2002	Black	2,618	408	15.6%	741	28.3%	1,335	51.0%
2002	Hispanic	75	5	6.7%	9	12.0%	13	17.3%
2002	Other	30	0	0.0%	3	10.0%	7	23.3%
2002	White	3,292	497	15.1%	962	29.2%	1,613	49.0%
2003	Black	2,768	321	11.6%	691	25.0%	1,349	48.7%
2003	Hispanic	50	4	8.0%	11	22.0%	20	40.0%
2003	Other	13	0	0.0%	1	7.7%	5	38.5%
2003	White	3,304	467	14.1%	883	26.7%	1,531	46.3%
2004	Black	2,711	255	9.4%	573	21.1%	1,260	46.5%
2004	Hispanic	64	10	15.6%	14	21.9%	24	37.5%
2004	Other	19	1	5.3%	4	21.1%	5	26.3%
2004	White	3,450	432	12.5%	786	22.8%	1,483	43.0%
2005	Black	2,285	167	7.3%	455	19.9%	1,064	46.6%
2005	Hispanic	70	6	8.6%	11	15.7%	22	31.4%
2005	Other	30	4	13.3%	7	23.3%	10	33.3%
2005	White	3,273	241	7.4%	563	17.2%	1,248	38.1%
2006	Black	2,304	144	6.3%	396	17.2%	925	40.1%
2006	Hispanic	115	10	8.7%	12	10.4%	29	25.2%
2006	Other	22	1	4.5%	2	9.1%	4	18.2%
2006	White	3,064	200	6.5%	533	17.4%	1,102	36.0%
2007	Black	2,374	159	6.7%	403	17.0%	1,057	44.5%
	Hispanic	155	12	7.7%	18	11.6%	34	21.9%
	Other	38	3	7.9%	7	18.4%	16	42.1%
	White	3,216	185	5.8%	453	14.1%	1,223	38.0%
2008	Black	2,607	200	7.7%	535	20.5%	1,235	47.4%
	Hispanic	247	11	4.5%	26	10.5%	53	21.5%
	Other	32	5	15.6%	12	37.5%	19	59.4%
	White	3,419	259	7.6%	702	20.5%	1,524	44.6%
2009	Black	2,641	207	7.8%	509	19.3%	1128	42.7%
	Hispanic	213	15	7.0%	27	12.7%	41	19.2%
	Other	37	5	13.5%	12	32.4%	20	54.1%
	White	3694	319	8.6%	795	21.5%	1553	42.0%



## Recidivism Rates: Race

In Table 5 recidivism rates were generated by race for **2009** and incorporated time frames of six months, one year and three-year post release. Recidivism rates were based on six racial groups. Within the ADC, the population primarily consists of Caucasian and African-American racial designations, while only a small percentage consists of Hispanic and other categories. For this report, the category of Caucasian is denoted as White; the African-American category is denoted as Black; the Hispanic Category consists of Mexican and Hispanic racial designations; and the Other category incorporates both Asian and Native Americans. The **2009** Recidivism Study addendum incorporates Caucasian, African-American, Hispanic, and Other racial designations to demonstrate recidivism rates by race as provided in Table 5. In **2009**, **3,694** Caucasian inmates were released and within three years; **1,553** or **42.2%** returned to prison, while 2,641 African-American inmates were released with **1,128** or **42.7%** returning to prison within three years. For **2009**, the rate for African-American inmates is marginally higher than for Caucasians (see Table 5).

Table 6



## Recidivism Rate: Age

Age shows to be significantly related to recidivism within the ADC. An inmate's age at his/her last admission was significantly related to return to custody (see Tables 6, 6.1 & 7). For both males and females, the age cohort of 34-24 at admission is most likely to return to prison within three years (See Table 7)

Table 6.1

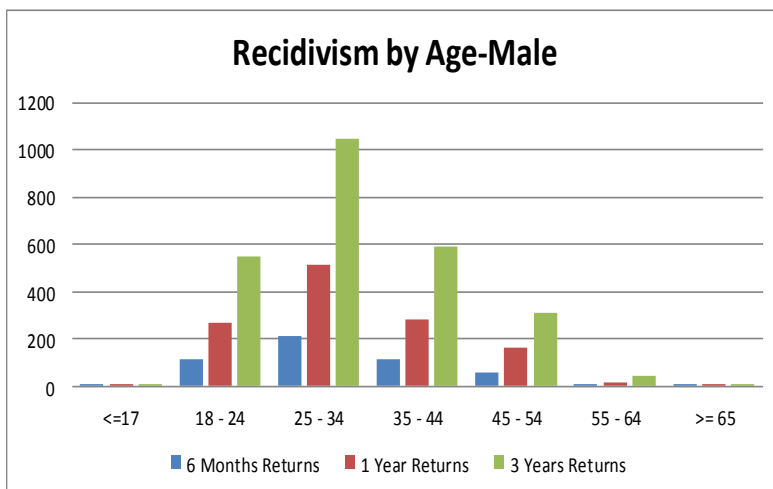


Table 7

		Recidivism by Age (female)			
Gender	AGE	6 Months	1 Year	3 Years	Total %
		Returns	Returns	Returns	Returns
Female	18 - 24	7	19	31	14.76%
	25 - 34	19	41	103	49.05%
	35 - 44	12	29	61	29.05%
	45 - 54	3	9	14	6.67%
	55 - 64	0	1	1	0.48%
	Total	41	99	210	100%

	Recidivism by Age (male)				
Gender	AGE	6 Months	1 Year	3 Years	Total %
		Returns	Returns	Returns	Returns
Male	<=17	3	3	4	0%
	18 - 24	116	268	547	22%
	25 - 34	213	515	1044	41%
	35 - 44	117	284	589	23%
	45 - 54	60	163	313	12%
	55 - 64	5	18	42	2%
	>= 65	3	5	5	0%
	Total	517	1256	2544	100%

### **Recidivism Rates: Offense**

Table 8 reflects the return rates as a result of the type of offense for a selected period of time. A variety of offenses were analyzed in order to understand the breadth and depth of recidivism rates by offense and the return to prison within the three-year time frame. For clarity, Table 8 denotes the offense category, the actual number of releases/returns for **2009**, and the actual numbers and percentages of returns within three years for each category.

**Table 8**  
**Recidivism Rates By Offense Category-2009**

Offense Category	No.Releases	Ret w/in 3 yrs	% Returned
0101 - Capital Murder	4	1	25.0%
0102 - Murder-1st Degree	39	7	17.9%
0103 - Murder-2nd Degree	52	15	28.8%
0104 - Manslaughter	41	16	39.0%
0105 - Negligent Homicide	31	8	25.8%
0201 - Kidnapping	34	15	44.1%
0202 - False Imprisonment-1st Degree	42	20	47.6%
0301 - Robbery	471	253	53.7%
0302 - Aggravated Robbery	136	45	33.1%
0401 - Battery-1st Degree	128	47	36.7%
0402 - Battery-2nd Degree	345	153	44.3%
0403 - Aggravated Assault	223	122	54.7%
0404 - Terroristic Threatening	147	73	49.7%
0405 - Terroristic Act	25	9	36.0%
0406 - Agg. Assault On Corr. Employee	3	1	33.3%
0407 - Battery 3rd Deg. (Enhanced)	4	2	50.0%
0408 - Intro Cont Subs Body/Another	3	1	33.3%
0501 - Rape	69	24	34.8%
0502 - Carnal Abuse-1st Degree	5	2	40.0%
0504 - Sexual Abuse-1st Degree	49	19	38.8%
0505 - Violation Of A Minor-1st Dg	1	0	0.0%
0506- Violations of A Minor-2nd Dg	2	0	0.0%
0507 - Exposing One To HIV	1	1	100.0%
0510 - Carnal Abuse-3rd Degree	3	1	33.3%
0513 - Sexual Assault	188	73	38.8%
0518 - Reg Sex offend near cert facI	1	0	0.0%
0658 - Residential Burglary	650	368	56.6%
0659 - Commercial Burglary	239	133	55.6%
0701 - Incest	8	3	37.5%
0702 - Domestic Battering-1st Degree	17	5	29.4%
0703 - Domestic Battering-2nd Degree	31	16	51.6%
0704 - Agg. Aslt On Family/Household	23	11	47.8%
0705 - Non-Support	69	23	33.3%
0707 - Interference With Custody	1	0	0.0%
0708 - Domestic Battering-3rd Degree	85	41	48.2%
0801 - Endanger Welfare Minor-1st Dg	11	5	45.5%
0803 - Permit Child Abuse	7	0	0.0%
0805 - Trans, Distr.Mat. Deplctg Chil	2	0	0.0%
0810 - Sexual Solicitation Of A Child	6	3	50.0%
0813 - Dist/Poss/View Sex Explicit	5	2	40.0%
0814 - Computer Child Pornography	11	4	36.4%
0828 - Expose Child to Chem Substance	3	0	0.0%
0830 - Sexual Indecency With A Child	28	8	28.6%
0901 - Abuse Of Adults	4	0	0.0%
1001 - Theft Of Property	675	326	48.3%
1002 - Theft Of Services	2	0	0.0%
1003 - Thft Of Prop Lost,Mislaid,Del.	1	0	0.0%
1004 - Theft By Receiving	255	121	47.5%
1005 - Theft Of Leased Property	8	4	50.0%
1006 - Theft Of Public Benefits	5	1	20.0%
1009 - Unauthorized Use of a Vehicle	1	0	0.0%
1046 - Internet Stalk.- Child Fel. C	5	1	20.0%

**Table 8—cond.  
Three year Recidivism Rates By Offense Category-2009**

Offense Category	No.Releases	Ret w/in 3 yrs	% Returned
1066 - Theft of Scrap Metal	1	0	0.0%
1101 - Forgery	233	101	43.3%
1102 - Defrauding Secured Creditors	1	0	0.0%
1104 - Fraudulent Use Of Credit Card	16	4	25.0%
1113 - Hot Check Violation	99	23	23.2%
1118 - Financial Identity Fraud	3	0	0.0%
1202 - Impair Oper. Of Vital Pub.Facil	1	0	0.0%
1203 - Arson	13	5	38.5%
1204 - Reckless Burning	3	1	33.3%
1205 - Criminal Mischief-1st Degree	46	24	52.2%
1207 - Criminal Mischief 2nd Degree	5	1	20.0%
1301 - Burglary	10	4	40.0%
1302 - Breaking And Entering	69	31	45.0%
1501 - Public Servant Bribery	1	0	0.0%
1602 - Witness Bribery	1	1	100.0%
1604 - Tampering With Physical Evid.	7	2	28.6%
1702 - Hindering Apprehension Or Proc	4	0	0.0%
1706 - Escape-2nd Degree	6	1	16.7%
1711 - Furnishing Prohib. Articles	21	10	47.6%
1712 - Failure To Appear	95	44	46.3%
1713 - Fleeing	46	20	43.5%
1715 - Filing A False Report	1	0	0.0%
1718 - Absconding	3	0	0.0%
1720 - Fail To Register Child/Sex Off	50	18	36.0%
1801 - Violation Of Medicaid Fraud Ac	1	0	0.0%
2201 - Fail. To Keep Records Dist Drg	101	23	22.8%
2202 - Advertise Drug Paraphernalia	487	141	29.0%
2203 - Manu/Delv/Poss Control Subs.	885	255	28.8%
2205 - Use Of Communication Facility	1	1	100.0%
2214 - Poss W/I To Manufacture	2	1	50.0%
2215 - Possession Of Ephedrine	2	0	0.0%
2300 - DWI Offenses	1	1	100.0%
2301 - Viol Of Omb DWI Act 4th Offens	60	11	18.3%
2707 - Stalking	3	2	66.7%
2901 - Poss. Firearm Certain Person	32	9	28.1%
2902 - Criminal Use Prohibited Weapon	1	0	0.0%
2904 - Criminal Poss. Of Explosives	2	1	50.0%
2907 - Poss. Of Firearm - School	1	1	100.0%
2909 - Furnish Deadly Weapon To Felon	1	0	0.0%
3001 - Criminal Attempt	38	12	31.6%
3002 - Criminal Solicitation	1	0	0.0%
3003 - Criminal Conspiracy	21	7	33.3%
3613 - Sex Offender Registration Vio.	1	1	100.0%
6503 - Fail To Stop Acc. W/Inj/Death	6	2	33.3%
6505 - Duty To Give Info & Render Aid	1	0	0.0%
8001 - Discharge Firearm From Vehicle	3	1	33.3%
Total	6585	2742	41.6%