

Larry Norris, ADC Director

July 1, 2006

The Honorable Mike Huckabee
Governor of Arkansas
State Capitol, Room 250
Little Rock, AR 72201

Fiscal year 2006 brought new programs and facility construction to address the current needs of the Arkansas Department of Correction's inmate population. Through a partnership with private industry, a factory with paying jobs for inmates opened at the McPherson Unit. At the Tucker Unit, we launched a faith-based program designed to prepare inmates for a successful re-entry into society.

With your help and the approval of the 2005 General Assembly, \$40 million in revenue bonds were issued to fund an 862-bed addition to the Ouachita River Correctional Unit. The facility will provide much-needed, specialized housing for geriatric, mental health, and chronically ill inmates. Also this year, the J. Aaron Hawkins, Sr. Center for Women at Wrightsville opened admitting 100 inmates – helping to accommodate the department's growing female population. The facility will house over 200 inmates

The department continues to progress because of dedicated employees who work diligently to carry out our mission. Their dedication to public service and to their fellow man was demonstrated by the outpouring of money, supplies, and time they donated in the wake of Hurricane Katrina. As another testament to character, ADC employee Roy Agee was named Arkansas State Employee Association's Outstanding State Employee of the Year 2005, for his contributions to the state and to his community.

On behalf of all ADC employees, I proudly submit the agency's 2006 Annual Report for your review. The continued support and guidance received from you, the General Assembly, and the Board of Corrections is truly appreciated.

Sincerely,

Larry Norris
ADC Director

Table of Contents

Mission, Vision, and EEO Statement	3
Board of Corrections	4
Yearly Events	5
Administrative Services	8
Education	10
Health Care Services	11
Institutional Services/Programs	12
Units/Facilities	13
Statistical Information	29
Activities	41
Directory	50
Map of Units/Centers	59

Mission

The Mission of the Arkansas Department of Correction is to:

*Provide public safety by carrying out the mandates of the courts;
Provide a safe, humane environment for staff and inmates;
Provide programs to strengthen the work ethic; and
Provide opportunities for spiritual, mental and physical growth.*

Vision

The Vision of the Arkansas Department of Correction is to be an honorable and professional organization through ethical and innovative leadership at all levels, providing cost efficient, superior correctional services that return productive people to the community.

EEO Statement

In keeping with its mission, the Department of Correction desires to employ individuals who are dependable and sincerely interested in serving the mission of the department.

The ADC seeks employees who can handle these important matters in a professional manner. The ADC is an equal opportunity employer, providing equal employment opportunities without regard to race, color, sex, religion, national origin, age, disability or veteran status. This policy and practice relates to all phases of employment including, but not limited to, recruiting, hiring, placement, promotion, transfer, layoff, recall, termination, training, rates of pay or other forms of compensation, use of all facilities and participation in all department sponsored employee activities and programs.

All members of the ADC management staff are familiar with this statement of policy, the philosophy behind it and their responsibility to apply these principles in good faith for meaningful progress in the utilization of minorities and women.

Board of Corrections

In 1993, the Arkansas General Assembly amended Arkansas Code Annotated §12-27-101 and placed the Department of Correction under the supervision and control of the Board of Corrections (BOC), which assumed the powers, functions, and duties formerly held by the original Board of Correction (1968) and its predecessor, the State Penitentiary Board (1943).

The Board of Corrections has seven voting members:

- Five citizen members
- Chairman of the Parole Board
(Until 1993, the Board of Parole)
- One criminal justice faculty member, employed at a four-year
Arkansas University

The BOC was impaneled July 1, 1993. Each member is appointed by the Governor and serves a term of seven years.

Pictured from left to right: Members of the Board of Corrections are : W.L. (Bill) Ferren, Secretary, Alonza Jiles, Benny Magness, Kelly Pace, Vice-Chairman, Drew Baker, Chairman, Dr. Mary Parker, and Leroy Brownlee.



Yearly Events

Women's facility constructed at Wrightsville

In August 2005, construction was underway for the 200-bed women's facility at Wrightsville. The prison, adjacent to the Boot Camp, accommodates the state's growing female inmate population. The facility provides additional treatment space and additional housing for inmates assigned to the Special Needs Program. In May, the center was officially named the J. Aaron Hawkins, Sr. Center for Women at Wrightsville as a memorial to Pastor J. Aaron Hawkins Sr., who served on the Board of Corrections from April 12, 2000 until January 23, 2006. The center partially opened on May 4, 2006, admitting its first 25 inmates. The population has grown to 100 by the end of June 2006.

Mental Health Building open at McPherson Unit

The addition of the Mental Health Building to the McPherson Unit in July 2005 marked a positive step in dealing with mental health problems associated with the female inmate population. The building has offices for mental health staff and areas for confidential counseling and group meetings.

Laws to help with prison overcrowding effective August 12, 2005

A package of legislation, to help the Arkansas Department of Correction deal with prison overcrowding and increasing incarceration costs, went into effect August 12, 2005. The bills were sponsored by Senator Jim Luker and Representative Will Bond. Included in the legislation is a measure that allows methamphetamine offenders serving 70 percent of their sentence to shorten their incarceration through good behavior. The change allows them to earn good time, but they still must serve at least 50 percent of their original sentence. The change only affects offenders whose date of offense is after the effective date of the law. Another new law allows inmates to earn 90 days good time for successful completion of a drug treatment program, GED education, or vocational education.

ADC hosts National Major Gang Task Force Conference in Little Rock, Arkansas

The Arkansas Department of Correction hosted the National Major Gang Task Force 11th Annual Training Conference in Little Rock on September 11-14, 2005. James Gibson, ADC Internal Affairs Administrator, served as the organization's president. The NMGTF provides leadership and information within the criminal justice system to minimize the effects of security threat groups, gangs, and terrorists in prisons, jails, and communities. The four-day conference attracted criminal justice professionals from throughout the nation.

Roy Agee named Outstanding State Employee of the Year

The Arkansas State Employees Association named Roy Agee, Intake Supervisor at the Diagnostic Unit, Outstanding State Employee of the Year during the association's annual convention on August 5, 2006 in Hot Springs. Selected from forth three (43) nominees, Agee was recognized for his many contributions to the state and to the community. Agee has worked for the state for 15 years. He is, in the words of his supervisor, "the consummate employee", and has been recognized with both Employee of the Year and Supervisor of the Year awards from his unit. He has long been a volunteer with local youth programs, whether it was football, basketball, baseball coach, or a mentor for neighborhood teens. His countless hours of service—which includes collecting clothes for needy families—led to his selection as 2003's White Hall Chamber of Commerce Volunteer of the Year.

Yearly Events Cont.

ADC helps Hurricane Katrina victims

After Hurricane Katrina struck the Gulf Coast on August 29, 2005 ADC staff, employee associations, and employees of Correctional Medical Services helped out with a variety of relief efforts including donations, fundraisers, and volunteering at local shelters. In addition to donating to the Red Cross and other relief efforts, ADC & CMS employees provided more than \$23,000 to relief efforts for correctional officers in Louisiana and Mississippi. Michael Smith, a driver for the Arkansas Correctional Industries warehouse, was presented an award that recognized the outstanding supervisor in Correctional Industries throughout the country. Smith was nominated because of his actions in ADC's efforts to assist the Louisiana Department of Correction immediately after Hurricane Katrina.

Industry (PIE) program earns inmates a paycheck

A new factory, that is part of the Prison Industry Enhancement (PIE) Program, began operating at the McPherson Unit. PIE programs create partnerships between private sector employers and detention facilities to help inmates receive job training and employment experience that will help their transition back into society. Actronix, Inc. was awarded the department's first PIE contract. It is an Arkansas based company that manufactures cable assemblies and harnesses for the technology industry. Inmates who qualify for the program are paid by the company and must send money to those they are supporting, donate to a crime victims' fund, and put some away in savings for receipt upon their departure.

Board approved bonds for special needs facility at ORCU

On November 9, 2005, the Arkansas Board of Corrections approved the sale of \$41.3 million in bonds to fund an 862-bed special needs facility at the Ouachita River Correction Unit. The revenue bonds will be issued through the Arkansas Development Finance Authority. The special needs unit will be constructed in three phases, all utilizing inmate labor. When completed, the

facility will house the department's special inmate population, including geriatrics, mental health, chronically ill, and disabled inmates.

Former Deputy Attorney General named new ADC Deputy Director

In February 2006, Wendy Kelley joined ADC as the new deputy director for Health and Correctional Programs. She previously served as a deputy attorney general for the State of Arkansas. During her 14-year tenure with the AG's office, Kelley often represented the department in court proceedings and she most recently represented the ADC in negotiating agreements with the United States Justice Department concerning continued improvements at the Newport Complex. She replaced Dr. Max Mobley, who retired in January after nearly thirty (30) years with the agency.

InnerChange Freedom (IFI) Program dedicated at Tucker Unit

June 1, 2006, marked the dedication of the new InnerChange Freedom Initiative at the Tucker Unit. IFI is a voluntary program aimed at morally transforming inmates and helping them develop life skills needed for a successful re-entry to society. The faith-based program is funded mostly by churches. At the program's kickoff, Governor Mike Huckabee delivered the keynote address. "I'm thrilled about being able to get the InnerChange Program here," the governor said. "It's a wonderful thing. It's a program that is funded privately and it's of great benefit to the state."

Yearly Events Cont.

ADC units pass Correctional Education Association Audit

In March 2006, eleven (11) units completed the Correctional Education Association accreditation audit. Those units are Cummins, Delta Regional, East Arkansas Regional, Grimes, McPherson, North Central, Maximum Security, Diagnostic, Ouachita River, Varner, and Wrightsville. All units passed with 100% compliance with all sixty seven (67) standards. William "Dubs" Byers, Correction's School System Superintendent said that eleven (11) auditors from various correctional education fields from around the United States "concurred that the Correction's School System provides an exceptional academic and vocational education program for the inmate population".

ADC wins top honors at 2006 Manhunt Field Trials

ADC teams won top honors at the 2006 Southern States Manhunt Field Trials on March 20-24 at Camp Robinson in North Little Rock. Some of those awards included: First Place-Tucker Unit-Single Leash, First Place-East Arkansas Regional Unit Multiple Leash, and First Place-Cummins Unit-Pack Dogs. The department swept the team marksmanship competition and the pack-dog competition. The Cummins pack won first place, the Tucker Unit took second, and East Arkansas Regional Unit earned third. K9 Max, a bloodhound whose home is the Diagnostic Unit, was named "Best Looking Canine." The event drew sixty (60) teams from six (6) southern states.

Character First Training

During August 2005, ADC implemented Character First. Character First is a nationally recognized training program designed to promote ethical behavior to enhance the work ethic through demonstration of good character. Through materials received from Character First, ADC introduced a monthly character quality to all ADC employees. Members of a designated Character Team at each unit/office provided the training. All employees attending the monthly training received three (3) hours of training credit. Character First leadership training was also provided as a CLIP certification course, this program replaced Images and Ethics during the Basic Correctional Officer Training (BCOT).

Prison Rape Elimination Act (PREA) Grant

The U.S. Department of Justice, Bureau of Justice Assistance, Protecting Inmates and Safeguarding Communities Program, a result of the Prison Rape Elimination Act of 2003, supports states in their efforts to prevent and eliminate prisoner rape between inmates in state and local correctional facilities and to safeguard the communities to which inmates return. ADC successfully applied for and received a PREA grant award of \$686,028 which will be matched by state in-kind labor and funding. Components of the grant include a Sexual Awareness Campaign, training for ADC and law enforcement personnel statewide, and expanded surveillance equipment at all facilities. The grant award is for a two-year period.

Administrative Services

FY06 Budget

Appropriations for all ADC State funded programs totaled \$255,953,454 in FY06. General Revenue funding included in the Revenue Stabilization Law was \$244,972,956. This amounted to an increase of \$38,400,000 over FY05. The FY06 budget included continuing level for existing institutions and administrative programs, an average of 3% cost of living raise on July 1, 2005; incremental increases for medical services contract costs; full year staffing and operational expenses of the 200-bed Hawkins Center for Women at Wrightsville; full year staffing and operational expenses for 316 beds at the Ouachita River Correctional Facility; 38 new Mental Health positions and 105 new positions for existing programs and units; and \$3 million increase for Maintenance and Operations. The FY06 budget included \$2.2 million of projected miscellaneous revenues and Merit Adjustment funds of \$546,000 for the cost of Career Service Recognition Payments. ADC received a separate line item appropriation and funding of \$7,710,504 for reimbursement to counties for housing state inmates, and this was budgeted in addition to the balances carried forward from FY05. Cash (Work Release, Non-Revenue, and Inmate Welfare), Special Revenue (Farm and Industry Programs), and Federal program appropriation budgets totaled \$41.3 million and included continuing level for existing programs.

FY06 Cost Per Day

Section 30 of Act 2035 of 2005, the ADC Appropriation Act for the FY06-07 Biennium, required ADC to submit to the Arkansas Legislative Council, within 90 days of the close of the State fiscal year, a report including direct and indirect cost incurred for housing and caring for incarcerated inmates. The Special Language required that cost be calculated and reported in total for the department and in total by each facility. The Section 30 Methodology required ADC to include cost of the ADC School District, the Department of Workforce Education, and the Attorney General's Office that are relative to ADC inmates. It also required the inclusion of any interest expense incurred for financing construction projects. The total ADC direct and indirect costs for FY06 were \$253,489,813, an increase of \$23.1 million

over FY05 cost of \$230,344,342. The FY06 average cost per day per inmate utilizing this methodology totaled \$54.42. The average cost per day per bed was \$52.64. In comparison, the 2005 cost were \$50.55 and \$48.50 respectively. In addition to the Section 30 methodology required by law, ADC has calculated a cost per day since the early 1980's. This methodology has been utilized by ADC since 1988 to operational compare cost increases from year to year. The average cost per day using the standard methodology is \$52.12, an increase of \$3.88 from the FY05 rate of \$48.24, or an increase of 8.0%.

JusticeXchange

The ADC began using information available through JusticeXchange. JusticeXchange is a real-time database that provides current and historical information about incarcerated offenders. JusticeXchange provides access to real time information from more than 1,500 facilities across the country in thirty nine (39) states and includes biographical information, charges, photographs, behavioral reports protective orders, sex offender classification and child support. The ADC has also incorporated JusticeXchange into the process of verifying an applicant's background.

Administrative Services

Career Ladder Incentive Program (CLIP)

Another strategy of our Goal to attract and retain quality staff is the continuation of a meaningful CLIP Program enabling employees to either receive a bonus or promotion for completing program requirements. In June 2006, ADC distributed \$1,224,842 in bonus payments to 958 employees. In addition, there were 292 employees that received a 6-8% salary increase during FY06 as a result of a CLIP promotion.

Pay Plan Study

Act 1015 of the 2005 mandated that the state Office of Personnel Management (OPM) and the Bureau of Legislative Research conduct a pay plan study of all state positions. During FY2006, all ADC employees completed questionnaires relative to their duties. OPM will present recommendations for new job descriptions, titles and classifications as well as a revised pay plan to the Arkansas Legislative Council for consideration during the 86th General session.

Nutrition, Health and Wellness

ADC introduced the first Nutrition, Health and Wellness CLIP training course in September 2005. Employees from Jefferson Regional Medical Center assisted ADC in educating employees enrolled in the training course about good nutrition and the value of a healthy lifestyle. Our goal is to encourage employees to make changes in their lifestyles that will prolong their lives and enable them to be more productive employees.

American Correctional Association (ACA) Accreditation

The first ACA audit for accreditation of the ADC Central Office and Administration Annex East was held in September 2005. Final scores were 100% on mandatory and 100% on non-mandatory requirements representing a significant achievement for the department. Also, the Training Academy re-accreditation was held in April 2006. The Training Academy also scored 100% on mandatory and 100% on non-mandatory.

e-Learning

The National Institute of Corrections has recognized ADC as leading other states in the use of their web-based eLearning program as a training tool. eLearning as well as classroom-based courses are updated each quarter. During FY06, 1,072 classes were taken providing ADC employees 3,752 hours of training credit.

Overtime/Straight Time/Holiday Pay

The ADC Goal of attracting and retaining quality staff continues to include the strategy of keeping all banked balances of overtime and straight time on a quarterly basis. Both overtime and straight time were paid during FY06 as budgetary savings became available. Overtime payments amounted to \$677,430 and straight time payments totaled \$1,865,023.82. In addition, ADC is authorized to pay balances of holiday time in accordance with Special Language provided in Section 24 of Act 2035 of 2005. This Special Language authorizes the Department of Correction to pay security employees up to ninety-six (96) unused holiday hours exceeding a banked balance of one-hundred fifty (150) hours following the end of the calendar year. A total of 113,934 holiday hours were paid amounting to \$1,656,540. Employees received these payments in their February 3, 2006 paycheck.

**TESTS OF ADULT BASIC EDUCATION (T.A.B.E.)
PRE AND POST TEST COMPARISON
SCHOOL YEAR - 2005/2006**

Test Units	Pre-Test Average	Post-Test Average	Gain	Average Months	Total Tested
Cummins Unit	5.7	5.5	-0.1	6.6	198
Delta Regional Unit	5.0	4.6	-0.2	4.3	109
East Ar Regional Unit	5.3	5.3	0.0	4.2	250
Grimes Unit	5.2	5.2	0.0	4.8	127
North Central Unit	4.5	4.6	0.1	5.0	113
Ouachita River Corr. Unit	4.8	5.2	0.2	7.1	65
Pine Bluff Complex	4.0	3.4	-0.3	5.7	76
Tucker Unit	4.8	4.1	-0.4	3.9	50
Varner Unit	5.2	5.3	0.1	3.9	397
Women's Unit (McPherson)	5.7	6.2	0.2	4.0	90
Wrightsville Unit	5.7	6.7	0.0	2.6	166
Totals	4.8	5.3	0.3	4.5	1,642

Health Care Services

ADC inmate medical and dental services are provided through a professional service contract with Correctional Medical Services (CMS), St. Louis, MO.

The cost, of the FY2006 contract, was an average of \$229.98 per inmate per month occupying ADC/DCC facilities and \$86.84 per inmate housed in county jails under conditions of Act 309. The contract provided comprehensive health care through the efforts of 324 full-time equivalent staff, including 25 full-time equivalent physicians, and dentists.

The program operates one licensed general medical hospital, eight (8) licensed infirmaries, and nine medical dispensaries. CMS was responsible for all secondary care including: emergency room visits, dialysis, outpatient surgery, hospitalizations, and consults needed by inmates to a maximum of \$6,078,489. Secondary care cost, above and beyond this amount, is paid for by the department, which amounted to \$4.6 million dollars for FY2006.

Summary of Services Provided

Screenings

Physical Exams/Screenings	18,529
Intake Exams/Screenings	14,715
Transfer/Rec. Screenings	21,909
Release Screenings	n/a
Annual Physicals	3,814
Sick Call Screenings	156,818
RN/LPN Screenings	106,486
PA/NP Screenings	13,889
MD Screenings	36,436

Laboratory

Laboratory Studies	33,200
Performed In-House	n/a
Performed Off-Site	33,200
Radiology Studies	5,658
Performed In-House	4,739
Performed Off-Site	919

Admissions

Infirmery Admissions	1,183
Hospital Admissions	965
Com. Based Facility	321
DGU Hospital	644

Surgeries

Surgeries/Consultations	424
-------------------------	-----

Com. Inpatient Performed	n/a
Com. Outpatient Performed	5,639
In-House Outpatient Performed	n/a
In-House Special Clinic Visits	8,254
In-House Vision Assessment	1,946
Glasses Issued	1,500

Dental

Dental Services	71,360
Intake Exams	5,870
Other Exams	65,490

Pharmacy

Prescriptions Filled	404,769
Formulary Medications	397,269
Non-Formulary Medications	7,500
Psychotropic Medications	25,223

Communicable Diseases

At the close of FY2006, the HIV population consisted of 99 inmates, 90 males and 9 females. On an ongoing basis, HIV screenings are conducted at intake for new commitments and as part of update physical exams for all inmates. Testing is mandatory for high-risk individuals such as IV drug abusers, prostitutes and inmates testing positive for tuberculosis exposure.

Inmates with high-risk lifestyles are provided counseling. Educational programs are available to inmates and to staff, and a standard curriculum is offered at the ADC Training Academy.

CMS has the responsibility of ensuring that all HIV inmates receive appropriate clinical and medicinal therapy, including multi-drug therapy.

During FY2006 there was one (1) case of active tuberculosis diagnosed within ADC. During annual screening, a total of 12,035 inmates were screened for tuberculosis with 10,275 PPD's administered and 61 new converters (a conversion rate of 0.5%).

There were 6,740 inmates screened at intake with 6,397 skin tests administered and 218 new converters (a conversion rate of 3.41%). Our jails screened a total of 176 detainees with 173 PPD's administered and 0 new converters (a conversion rate of 0%).

Institution Operational Services/Programs

Act 309 Program: Contracts for housing and supervision of eligible State inmates in approved county and/or city jails for work purposes.

Agriculture: Inmate work assignments and training in row and garden crop farming, animal husbandry, and food processing.

Alcoholics Anonymous, Cocaine Anonymous and Narcotics Anonymous: A system of recovery from substance abuse utilizing role models and a 12-step approach.

Anger Management: Behavior modification program, using the American Correctional Association's "Cage Your Rage," for inmates who consistently resort to violence rather than problem solving.

Boot Camp: A military-style behavior modification program based on discipline, academic education, and substance abuse education. Eligible inmates must volunteer to participate in the program.

Braille and Large Print Program: Transcription of textbooks into Braille for the Arkansas School for the Blind and enlarging print of books for legally blind individuals.

College Program: College courses available for inmates at certain units, potentially leading to an Associate of Arts or Bachelor of Arts Degree.

Construction/Maintenance: On the job training and work assignments for inmates through the construction and maintenance of department facilities.

Industry: Production of goods and services utilizing inmate labor for profit to nonprofit agencies, state agencies, and employees.

Intake Orientation: Orientation for new inmates that include assessment of educational, medical, physical and psychological needs.

Disciplinary Court: An internal justice system for determining sanctions for rule violations by inmates.

Food Services: Inmate work assignments of preparing meals for inmates and staff.

Habilitation Program: Housing, work supervision, and treatment at the Tucker Unit for developmentally disabled inmates.

HIV and TB Programs: Prevention, tracking, case management, counseling, treatment, review, and research designed to lessen the

spread of infectious diseases.

Industry: Inmate work assignments and on the job training in manufacturing settings producing goods and services for government and nonprofit agencies

Inmate Panel: Inmates with good insight into their pathways to trouble share their experiences with groups of children, teenagers and adults.

Inner-Change Freedom Initiative (IFI): is a voluntary Christ-centered and Values-based pre-release program that promotes transformation from the inside out.

Jaycees: Inmate chapters of the community service organization chartered from the national Jaycees.

Library: Hard cover and paperback books, reference materials and periodicals provided for inmate use.

Medical Services: Complete medical care for inmates including sick call, hospitalization, surgery, dental and eye care and educational and rehabilitative programs.

Mental Health Services: Outpatient treatment and intervention services for individuals and groups.

Parenting Program: Inmate training in parenting and child care skills.

Principles and Applications of Life Skills (PALS) Program: Includes worship services, religious materials, life skills training, and counseling services to all inmates within the ADC.

Prison Industries Enhancement (PIE): A private sector wage paying industry program, currently for female inmates, at the McPherson Unit.

Pre-Release: A 30-day training program at McPherson, Tucker and Wrightsville to prepare inmates for their return to the community.

Reduction of Sexual Victimization Program (RSVP): Twelve-month residential treatment of compulsive sexual behaviors, particularly child molestation

Religious Services: Worship services, religious materials, counseling and crisis ministry for inmates.

School District: School district within the ADC with GED potential for inmates.

Sheltered Living Unit: Inmate housing at the Diagnostic Unit and Jefferson County Jail/Correctional Facility for the elderly, chronically ill or those recovering from acute illness.

Special Management Barracks: Housing at the Cummins Unit for inmates with mental health management and counseling needs.

Special Programs Unit: Housing at the Diagnostic Unit, work supervision and treatment for mentally disabled or disordered inmates.

Storybook Project: A private ministry, where children's books are recorded on audio tape by the inmate to be played at home later by their children as they read the book in their absence.

Substance Abuse Treatment: 6 to 12 month residential program at most units, based on a relapse/prevention approach for treatment of substance abuse.

Substance Abuse Therapeutic Community: Six-month (minimum) comprehensive substance abuse treatment using a modified therapeutic community residential program.

Suicide Prevention: Mental Health Staff regulate assessments on segregated inmates identified with prior suicidal history for more than 30 days.

Victim Services: Provides notification to victims of hearings and movements of inmates and liaison between various organizations and the Department of Correction.

Vocational Education: Vocational education in 22 areas of study, provided by Riverside Vocational Technical School and funded by the Department of Workforce Education.

Volunteer Services: Volunteers provide a wide range of services including transportation of inmate families, twelve step support groups and religious services.

Work Craft Program: Inmates produce leather goods, wooden and cloth artifacts, artwork and the like for sale or gifts to family and friends.

Work Programs: Inmates are assigned jobs through out ADC that teach work skills and ethics.

Work Release Programs: Inmates are employed in the community and contribute to their own care and custody costs.

Arkansas Department of Correction Units/Facilities

Benton Unit

Mission: To protect, educate, and train male inmates who are minimum custody level so they can be released to become law abiding and tax paying citizens.

Date Established: 1974
ACA Accredited
Location: Benton
Gender: Male
Custody Level: Minimum
Unit Capacity: 325
Number of Employees: 73

Special Programs:

- Work Release



Sara McQuilliams, Warden



Cummins Unit

Mission: To protect, educate, and train male inmates who are minimum, medium, and maximum custody levels so they can be released to become law abiding citizens.

Date Established: 1902
ACA Accredited
Location: Grady
Gender: Male
Custody Level: Max-Med-Min
Unit Capacity: 1,550
Number of Employees: 481



Gaylon Lay, Warden

Special Programs:

- PALS (Principles and Applications of Life Skills) Program
- Special Management Barracks (SMB)
- Agricultural
- Industry
- Canine unit



Delta Regional Unit

Mission: To provide a safe, humane environment for staff and inmates, to strengthen the work ethic through teaching of good habits and to provide opportunities for inmates to improve spiritually, mentally and physically.

Date Established: 1990
ACA Accredited
Location: Dermott
Gender: Male
Custody Level: Medium-Minimum
Unit Capacity: 432
Jail Capacity: 20
Number of Employees: 152



Mark Cashion, Warden

Special Programs:

- Life Skills
- Industry
- Narcotics Anonymous/Alcoholics Anonymous Program
- Anger Management



East Arkansas Regional Unit

Mission: To protect, educate, and train male inmates who are minimum, medium, maximum custody levels so they can be released to become law abiding citizens.

Date Established: 1992
ACA Accredited
Location: Brickeys
Gender: Male
Custody Level: Max-Med-Min
Unit Capacity: 1,432
Number of Employees: 405



Greg Harmon, Warden

Special Programs:

- Agricultural
- Jail Operations
- Substance Abuse Treatment Program (SATP)
- Canine Unit
- Life Skills
- Alcoholics Anonymous
- College Program



Newport Complex

Mission: To provide secure care, custody, control, and transportation for the inmates housed at the facility and to offer education and programming for their rehabilitation.

Grimes Unit

Special Programs:

- Substance Abuse Treatment Program (SATP)
- PALS (Principles and Applications of Life Skills) Program
- Story Book Project
- Anger Management
- Horse Training
- ICC Garage
- College Program

Date Established: 1998
Location: Newport
Gender: Male
Custody Level: Medium
Unit Capacity: 1000
Number of Employees: 244



John Maples, Warden

McPherson Unit

Special Programs:

- Substance Abuse Treatment Program (SATP)
- PALS (Principles and Applications of Life Skills) Program
- Alcoholics Anonymous/Narcotics Anonymous Program
- Vocational Education
- Pre-Release
- College Program
- Special Programs Unit
- Parenting
- Sex Offender Treatment Program
- Prison Industry Enterprise (P.I.E.) Program
- "One Day Wonder" Program
- Anger Management
- MiWatch
- Even Start

Date Established: 1998
Location: Newport
Gender: Female
Custody Level: Max-Med-Min
Unit Capacity: 700
Number of Employees: 159

McPherson Unit



Grimes Unit



Maximum Security Unit

Mission: To provide male inmates with security, housing, and treatment whose assaultive and insubordinate behavior patterns warrant increased security and supervision.

Date Established: 1983
ACA Accredited
Location: Tucker
Gender: Male
Custody Level: Maximum
Unit Capacity: 532
Number of Employees: 238



David White, Warden

Special Programs:

- Substance Abuse Treatment Program (SATP)
- PALS (Principles and Applications of Life Skills) Program
- U.N.I.T.Y. Program
- Pre-Release For Admin. Segregation Inmates



Mississippi County Work Release Center

Mission: To protect society by providing incarceration as a deterrent to the commission of crime and to ensure the safety and security of inmates, employees and visitors.

Date Established: 1975
ACA Accredited
Location: Luxora
Gender: Male
Custody Level: Minimum
Unit Capacity: 121
Number of Employees: 32

Special Programs:

- Work Release
- Life Skills



Joe Porchia, Supervisor



Pine Bluff Complex

Diagnostic Unit

Mission: To provide intake processing for male inmates sentenced to the ADC, to protect society from victimization within the correctional environment, which is conducive to rehabilitation, and to provide a safe environment for staff and inmates.

Date Established: 1978
ACA Accredited
Location: Pine Bluff
Gender: Male
Custody Level: Medium-Minimum
Unit Capacity: 459
Number of Employees: 176



Rick Toney, Warden

Special Programs:

- Male Intake Orientation
- Life Skills
- Hospital Facilities
- Special Programs Unit
- Anger Management



Jefferson County Jail/Correctional Facility

Mission: To provide for the safety of the public and ensure the appearance of detainees for trial by providing secure housing within the county jail, while ensuring secure incarceration of convicted offenders within the facility.

Special Programs:

- Jail Operations
- Alcoholics/Narcotics Anonymous
- Sheltered (Geriatrics/Medical) Living Unit

Date Established: 1991
ACA Accredited
Location: Pine Bluff
Gender: Male
Custody Level: Medium-Minimum
Unit Capacity: 437
Number of Employees: 141

Pine Bluff Unit

Mission: To secure, protect, educate, and train inmates so they can be released to society and become law abiding citizens.

Date Established: 1981
ACA Accredited
Location: Pine Bluff
Gender: Male
Custody Level: Medium-Minimum
Unit Capacity: 430
Number of Employees: 146

Special Programs:

- Work Release
- Pre-Release
- Alcoholics Anonymous
- Garment Factory
- Life Skills
- Parenting
- Construction



Jefferson County Jail/Correctional Facility



North Central Unit

Mission: To protect, educate, and train male inmates who are minimum, medium custody levels so they can be released to become law abiding citizens.

Date Established: 1990
ACA Accredited
Location: Calico Rock
Gender: Male
Custody Level: Medium-Minimum
Unit Capacity: 500
Number of Employees: 173



James Banks, Warden

Special Programs:

- Faith Based PALS (Principals and Life Skills) Barracks
- Pre-Release Program
- Livestock Operation
- Anger Management
- Canine Unit
- College Program



Northwest AR Work Release Center

Mission: To teach inmates work ethics and fiscal responsibility, while providing a service to the community, which will foster a positive awareness regarding the department.

Date Established: 1980
Location: Springdale
Gender: Male
Custody Level: Minimum
Unit Capacity: 42
Number of Employees: 10



James Brooks, Supervisor

Special Programs:

- Work Release
- Life Skills



Ouachita River Correctional Center

Mission: To protect, educate, and train male inmates who are minimum or medium custody levels so they can be released to become law abiding citizens.

Date Established: 2003
Location: Malvern
Gender: Male
Custody Level: Med - Minimum
Unit Capacity: 938
Number of Employees: 239

Special Programs:

- Reduction of Sexual Victimization Program (RSVP)
- Parenting
- Alcohol/Narcotic Anonymous
- Livestock and Hay Operations
- Gravel Harvesting



Dale Reed, Warden



Texarkana Regional Correction Center

Mission: To protect society by providing incarceration as an appropriate deterrent to the commission of crime, to provide an environment for detainees in which rehabilitation is possible, to provide community service and to provide the courts with effective evaluation tools and information for sentencing decisions.

Date Established: 1983

Location: Texarkana

Gender: Male

Custody Level: Medium-Minimum

Unit Capacity: 128

Number of Employees: 29



Larry Cauley, Supervisor

Special Programs:

- Work Release



Tucker Unit

Mission: To protect society by providing incarceration as a deterrent to the commission of crime and ensure the safety and security of inmates, employees and visitors, and to provide programs including treatment, training, academic, and vocational education to rehabilitate inmates.

Date Established: 1916
ACA Accredited
Location: Tucker
Gender: Male
Custody Level: Max-Med-Min
Unit Capacity: 796
Number of Employees: 179



Marvin Evans, Warden

Special Programs:

- Substance Abuse Treatment Program (SATP)
- Agriculture
- Pre-Release
- Vocational Education
- Life Skills
- Industry
- Habilitation Program
- Therapeutic Community
- Inner-Change Freedom Initiative (IFI)



Varner Unit

Mission: To protect, nurture, and teach strong work ethics while offering education and rehabilitation programs to all inmates so they will have knowledge and skills upon release to become law abiding citizens.

Date Established: 1987
ACA Accredited
Location: Grady
Gender: Male
Custody Level: Max-Med-Min
Unit Capacity: 1,556
Number of Employees: 394



Grant Harris, Warden

Special Programs:

- Supermax Unit
- Substance Abuse Treatment Program (SATP)
- Vocational Education
- Agriculture
- Faith Based PALS (Principals and Life Skills) Barracks Program
- College Program
- Vegetable Processing



Wrightsville Unit

Mission: To protect, educate, and train male inmates who are minimum and medium custody levels so they can be released to become law abiding citizens.

Date Established: 1981
ACA Accredited
Location: Wrightsville
Gender: Male
Custody Level: Medium-Minimum
Unit Capacity: 850
Number of Employees: 177

Special Programs:

- Substance Abuse Treatment Program (SATP)
- Livestock Operation
- Vocational Education
- Industry
- Braille Program
- Principals and Applications for Life (PAL)
- Therapeutic Community
- Pre-Release
- Work Release
- Parenting Program



Kay Howell, Warden

J.Aaron Hawkins, Sr. Center for Women

Mission: To provide an alternative form of incarceration for non-violent offenders serving their felony offense. The program stresses a highly structured and regimented routine, which includes extensive discipline, considerable physical work, exercise and intensive drug rehabilitation therapy.

Special Programs:

- Inner-Change Freedom Initiative (IFI)
- Special Management Unit
- Industry (female)

Date Established: 2006
Location: Wrightsville
Gender: Female
Custody Level: Med.– Min
Unit Capacity: 216
Number of Employees: 63

Boot Camp

Date Established: 1990
ACA Accredited
Location: Wrightsville
Gender: Male & Female
Custody Level: Minimum
Unit Capacity: 212
Number of Employees: 53

Mission: To provide an alternative form of incarceration for nonviolent offenders serving their first felony offense. The program stresses a highly structured and regimented routine, which includes extensive discipline, considerable physical work, exercise and intensive drug rehabilitation therapy.

Special Programs:

- Military-style training
- Work Release (female)
- Industry (female)
- ReAct

Statistical Profile Report

Inmate Profile

Inmate Custody Population as of 6/30/06= 12,643

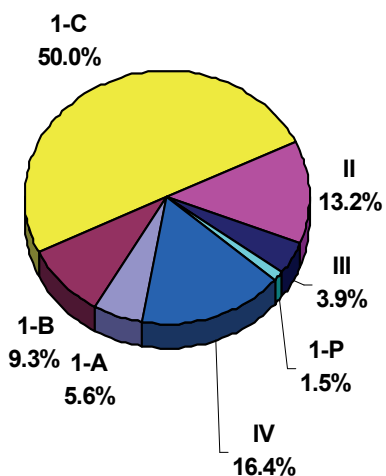
Inmate Jurisdiction Population as of 6/30/06 = *13,570

Average Daily Jurisdiction Population for FY 06 = 13,431

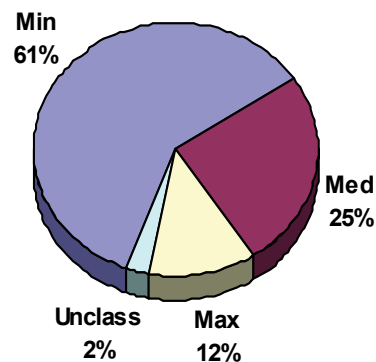
	Male		Female		Total	
Race	#	%	#	%	#	%
Black	5,685	41.9%	349	2.6%	6,034	44.5%
White	6,491	47.8%	758	5.6%	7,249	53.4%
Asian	23	0.2%	4	0.0%	27	0.2%
Cuban	5	0.0%	0	0.0%	5	0.0%
Hispanic	192	1.4%	17	0.1%	209	1.5%
Nat. Indian	7	0.1%	6	0.0%	13	0.1%
Mexican	26	0.2%	0	0.0%	26	0.2%
Other	7	0.1%	0	0.0%	7	0.1%
Total	12,436	91.6%	1,134	8.4%	13,570	100.0%

* This figure denotes the print-out population, which includes Ark. Concurrent Sentences etc.
(not daily count sheet population)

Good Time Class



Custody Level



**Average Length of Sentence & Average Time Served
For Offenders Released**
(Excluding Lifers)

<u>Violent Offense</u>	Male (Yrs) (Mths)		Female (Yrs) (Mths)		Overall (Yrs) (Mths)	
Homicide						
Sentence	24	6	13	2	23	7
Served	9	11	6	11	9	8
Kidnapping						
Sentence	8	10	8	0	8	10
Served	3	5	1	10	3	4
Aggravated Robbery						
Sentence	19	8	35	0	19	10
Served	10	2	10	8	10	2
Assault & Battery						
Sentence	7	8	5	3	7	7
Served	2	10	2	1	2	10
Sexual Offenses						
Sentence	12	6	5	10	12	4
Served	5	11	3	6	5	10
Offenses Involving Family						
Sentence	4	4	8	1	4	6
Served	1	4	2	3	1	5
Offenses Against Child						
Sentence	6	0	3	6	4	0
Served	1	1	0	6	0	7
Average for Violent						
Sentence	12	1	8	5	11	11
Served	5	3	3	6	5	2
<u>Non-Violent Offense</u>						
Robbery						
Sentence	10	1	8	7	10	0
Served	4	1	3	5	4	1
Assault and Battery						
Sentence	3	5	3	1	3	4
Served	1	1	1	2	1	1
Sexual Offenses						
Sentence	6	11	5	0	6	8
Served	3	2	5	0	3	4
Offenses Involving Family						
Sentence	3	3	1	9	3	1
Served	0	11	1	2	0	11
Offenses Against Child/Incomp						
Sentence	3	4	3	5	3	4
Served	1	6	1	7	1	6
Abuse of Adults						
Sentence	5	0	0	4	1	11
Served	1	3	0	0	0	4
Theft						
Sentence	5	4	4	11	5	3
Served	1	11	1	6	1	10

Offenders Released Cont.

<u>Non-Violent Offense (contd.)</u>	Male (Yrs) (Mths)		Female (Yrs) (Mths)		Overall (Yrs) (Mths)	
Offenses Involving Family						
Sentence	3	3	1	9	3	1
Served	0	11	1	2	0	11
Offenses Against Child/Incomp						
Sentence	3	4	3	5	3	4
Served	1	6	1	7	1	6
Theft						
Sentence	5	4	4	11	5	3
Served	1	11	1	6	1	10
Forgery						
Sentence	3	9	3	7	3	8
Served	1	4	1	5	1	4
Damage/Destruction of Property						
Sentence	6	6	2	6	6	4
Served	2	5	1	11	2	4
Burglary						
Sentence	7	5	5	8	7	4
Served	2	10	1	9	2	9
Judicial And other						
Sentence	8	1	3	0	6	11
Served	2	0	1	0	1	9
Obstruct Gov Oper						
Sentence	4	5	3	9	4	3
Served	1	5	1	3	1	4
Controlled Substance						
Sentence	6	5	4	3	6	2
Served	2	2	1	5	2	1
DWI						
Sentence	2	9	2	0	2	8
Served	1	2	0	10	1	2
Weapons						
Sentence	5	7	3	1	5	6
Served	1	8	1	9	1	8
Inchoate Offenses						
Sentence	10	0	7	2	9	9
Served	3	0	2	1	2	11
Transportation Laws						
Sentence	2	6	2	6	2	6
Served	0	11	1	5	1	0
Gang Related Activities						
Sentence	13	0	11	6	12	11
Served	4	3	2	11	4	2
Average for Non-Violent						
Sentence	6	9	4	6	6	6
Served	2	4	1	7	2	3
Average for All Releases during FY 06						
Sentenced	7	6	4	9	7	2
Served	2	9	1	8	2	8

Admissions By County

County	Males		Females		M	F		Males		Females		M	F
	B	W	B	W				B	W	B	W		
Arkansas	74	26	5	9	1.2%	0.2%	Lee	9	8	2	0	0.2%	0.0%
Ashley	48	33	6	15	1.0%	0.3%	Lincoln	7	2	2	0	0.1%	0.0%
Baxter	0	72	0	11	0.9%	0.1%	Little River	24	30	0	6	0.6%	0.1%
Benton	6	239	46	65	2.9%	1.3%	Logan	1	38	0	9	0.5%	0.1%
Boone	0	88	0	11	1.0%	0.1%	Lonoke	21	113	2	26	1.6%	0.3%
Bradley	25	3	0	0	0.3%	0.0%	Madison	0	46	0	4	0.5%	0.0%
Calhoun	16	5	1	0	0.3%	0.0%	Marion	0	17	0	3	0.2%	0.0%
Carroll	1	38	0	6	0.5%	0.1%	Miller	88	92	20	20	2.1%	0.5%
Chicot	32	9	3	0	0.5%	0.0%	Mississippi	148	77	10	17	2.7%	0.3%
Clark	16	21	8	4	0.4%	0.1%	Monroe	11	8	0	1	0.2%	0.0%
Clay	0	26	0	3	0.3%	0.0%	Montgomery	0	11	0	2	0.1%	0.0%
Cleburne	0	42	0	10	0.5%	0.1%	Nevada	15	8	0	1	0.3%	0.0%
Cleveland	9	11	4	0	0.2%	0.0%	Newton	0	6	0	1	0.1%	0.0%
Columbia	42	14	4	0	0.7%	0.0%	Quachita	43	24	5	7	0.8%	0.1%
Conway	29	27	2	9	0.7%	0.1%	Perry	0	6	0	0	0.1%	0.0%
Craighead	72	128	4	27	2.4%	0.4%	Phillips	38	14	2	0	0.6%	0.0%
Crawford	18	211	8	48	2.7%	0.7%	Pike	5	22	0	6	0.3%	0.1%
Crittenden	181	68	11	6	3.0%	0.2%	Poinsett	37	43	4	7	1.0%	0.1%
Cross	13	9	2	1	0.3%	0.0%	Polk	0	37	0	7	0.4%	0.1%
Dallas	27	9	2	0	0.4%	0.0%	Pope	26	120	2	25	1.7%	0.3%
Desha	35	6	1	1	0.5%	0.0%	Prairie	9	12	1	1	0.3%	0.0%
Drew	33	13	0	5	0.5%	0.1%	Pulaski	595	272	78	60	10.3%	1.6%
Faulkner	103	165	7	44	3.2%	0.6%	Randolph	3	35	0	7	0.5%	0.1%
Franklin	4	35	0	3	0.5%	0.0%	St Francis	39	8	2	1	0.6%	0.0%
Fulton	0	24	0	4	0.3%	0.0%	Saline	11	73	1	28	1.0%	0.3%
Garland	42	79	3	14	1.4%	0.2%	Scott	1	22	0	9	0.3%	0.1%
Grant	6	36	2	2	0.5%	0.0%	Searcy	0	8	0	1	0.1%	0.0%
Greene	5	26	67	13	0.4%	1.0%	Sebastian	117	53	325	62	2.0%	4.6%
Hempstead	25	20	0	1	0.5%	0.0%	Sevier	7	25	0	7	0.4%	0.1%
Hot Springs	26	50	8	13	0.9%	0.3%	Sharp	0	21	0	5	0.3%	0.1%
Howard	42	26	2	4	0.8%	0.1%	Stone	1	39	0	8	0.5%	0.1%
Independence	14	12	97	12	0.3%	1.3%	Union	111	34	17	13	1.7%	0.4%
Izard	1	35	0	3	0.4%	0.0%	Van Buren	2	41	0	12	0.5%	0.1%
Jackson	28	40	5	18	0.8%	0.3%	Washington	102	594	5	163	8.3%	2.0%
Jefferson	99	28	6	12	1.5%	0.2%	White	34	123	5	42	1.9%	0.6%
Johnson	6	61	2	18	0.8%	0.2%	Woodruff	1	2	0	1	0.0%	0.0%
Lafayette	17	13	1	3	0.4%	0.0%	Yell	6	31	0	3	0.4%	0.0%
Lawrence	0	15	0	4	0.2%	0.0%	Inter. St. Comp.	1	1	0	0	0.0%	0.0%
							Unknown	6	20	4	7	0.3%	0.1%

Males = 6513 Females = 1765 Total Intakes = 8,278. Total includes 2 Interstate Compact Inmates; 37 inmates included in unknown category are County Jail Back-up. Total Custody = 13,570.

Crime Breakdown
Violent and Non-Violent
 (% of Population)

Offense Category	Gender		
Violent	F	M	Total
Homicide	1.0	12.7	13.8
Sexual Offenses	0.2	15.0	14.8
Kidnapping	<.1	0.6	0.6
Battery/Assault	0.4	3.9	4.3
Aggravated Robbery	0.3	8.4	8.7
Offenses Involving Family	.1	1.3	1.4
Offenses Against Child/Incomp	<.1	<.1	<.1
Gang Related Activities	<.1	.1	.1
Subtotal	2.1	41.6	43.6
Non-Violent			
Controlled Substance	2.6	19.4	22.0
Robbery	0.3	4.6	4.9
Battery/Assault	<.1	0.2	0.2
Sexual Offenses	<.1	0.1	0.1
Offenses Involving Family	<.1	0.1	0.1
Offenses Against Child/Incomp.	<.1	0.6	0.6
Damage or Destruction of Prop.	0.1	0.5	0.6
Burglary	0.3	8.7	9.0
Theft	0.7	3.7	4.3
Forgery/Fraud	1.0	1.2	2.2
Obstructing Governmental Operations.	0.3	1.7	2.0
DWI	<.1	0.4	0.4
Riot, Disorderly Conduct	<.1	0.1	0.1
Weapons	<.1	0.9	0.9
Inchoate Offenses	0.7	5.2	5.9
Gang Related Activities	0.2	2.6	2.8
Others	0.1	0.2	0.3
Subtotal	6.3	50.1	56.4
Total	8.4	91.6	100.0

Length of Sentence for Admissions (Excluding Lifers)

Offense	Male		Female		Average	
	Yrs.	Mos.	Yrs.	Mos.	Yrs.	Mos.
Violent						
Homicide	22	4	28	7	22	11
Sexual Offenses	14	1	11	0	14	1
Kidnapping & Related Offenses	9	5	5	0	9	4
Battery/Assault	7	5	7	6	7	5
Aggravated Robbery	24	4	11	5	23	9
Offenses Involving Family	5	0	4	0	4	11
Offenses Against Child/Incomp.	0	0	4	6	4	6
Gang Related Activities	6	1	0	0	6	1
Average Violent	12	6	10	9	12	5
Non-Violent						
Controlled Substance	6	10	4	5	6	5
Robbery	10	10	11	8	10	10
Assault and Battery	3	6	4	6	3	7
Sexual Offenses	10	2	0	0	10	2
Offenses Involving Family	3	2	1	8	3	0
Offenses Against Child/Incomp	10	2	2	9	9	5
Abuse of Adults	0	0	0	4	0	4
Theft	4	10	3	11	4	8
Forgery	3	11	3	1	3	7
Arson	5	9	5	5	5	9
Judicial and Other Off. Proc.	12	0	3	8	5	9
Obstructing Govnmt Operations	4	4	3	10	4	3
DWI	2	6	1	7	2	5
Riot, Disorderly Conduct	8	11	0	0	8	11
Weapons	5	3	1	0	5	2
Inchoate Offenses	11	0	8	4	10	8
Gang Related Activities	14	9	13	4	14	8
Transportation Laws	2	10	0	0	2	10
Other Offenses	7	4	10	2	8	2
Average Non-Violent	6	7	4	5	6	3

Average Length of Sentence For Female Admissions

4 years, 9 months, 19 days

Average Length of Sentence For Male Admissions

7 years, 6 months, 4 days

All Admissions Average Length of Sentence

7 years, 1 months, 6 days

NOTE: Thirty six (36) offenders were sentenced to Death, Life Without Parole or Life during FY06. Their sentence length is not included in the computations

Average Sentence Length for Offenders

(Excluding Lifers)

Offense	Male		Female		Average	
	Yrs.	Mos.	Yrs.	Mos.	Yrs.	Mos.
Violent						
Homicide	34	6	27	2	33	11
Sexual Offenses	25	0	22	0	24	11
Kidnapping & Related Offenses	23	7	10	0	21	6
Battery/Assault	15	5	9	7	14	11
Aggravated Robbery	28	0	25	2	27	11
Offenses Involving Family	12	3	4	11	11	8
Offenses Agnst Child/Incomp	15	0	8	0	10	4
Gang Related Activities	7	1	0	0	7	1
Average Violent	25	9	20	0	25	6
Non-Violent						
Controlled Substance	12	8	9	2	12	3
Robbery	15	2	12	9	15	1
Battery/Assault	7	3	5	3	7	1
Burglary	12	4	9	8	12	3
Theft	8	11	7	5	8	8
Forgery	6	7	5	1	5	11
Arson	14	0	10	8	13	7
Judicial & Official Procedures	8	2	3	0	7	6
Obstructing Gov Operations	5	11	6	7	6	0
DWI	3	0	2	2	2	11
Weapons	8	7	15	0	8	8
Riot, Disorderly Conduct	19	5	0	0	19	5
Inchoate Offenses	17	7	12	7	17	0
Animals	4	0	0	0	4	0
Video Voyeurism	6	0	0	0	6	0
Transportation Laws	3	8	0	0	3	8
Gang Related Activities	19	9	16	3	19	6
Average Non-Violent	12	10	9	1	12	5

Average Length of Sentence For Female Population

11 years, 3 months, 0 days

Average Length of Sentence For Male Population

18 years, 0 months, 0 days

Average Length of Sentence For Total Population

17 years, 4 months, 25 days

NOTE: Excludes 1,270 offenders who are serving sentences of Death, Life Without Parole or Life.

Admissions FY 2006

Gender Race	Males					
	B#	B%	W/Oth	W%	Tot	Tot%
ADMISSIONS						
New Commits	1785	37.0%	3039	63.0%	4824	83.7%
Supv - Ret/NT						
Return from ADC rel	0	0.0%	5	100.0%	5	100.0%
Return from DCC rel	0	0.0%	0	0.0%	0	0.0%
Supv - RT/TV						
Parole returned	1	100.0%	0	0.0%	1	100.0%
Return from ADC rel	11	52.4%	10	47.6%	21	43.8%
Return from DCC rel	1	100.0%	0	0.0%	1	5.6%
Cond Rel/TV						
Ret/Boot Camp rel	1	33.3%	2	66.7%	3	42.9%
Supv Rt/Reg						
Parole return	25	69.4%	11	30.6%	36	94.7%
Ret fr ADC rel	624	41.3%	886	58.7%	1510	97.0%
Ret fr DCC rel	7	24.1%	22	75.9%	29	90.6%
Cond - Rel/Reg						
Ret/Boot Camp rel	60	47.2%	67	52.8%	127	92.7%
Escape Return	1	14.3%	6	85.7%	7	100.0%
Bond Return	1	11.1%	8	88.9%	9	100.0%
Receive Fr DCP	29	27.6%	76	72.4%	105	90.5%
InterSt Cmpet	1	33.3%	2	66.7%	3	75.0%
TOTAL	2547	38.1%	4134	61.9%	6681	86.3%

Admissions FY 2006

Females						Overall Total				
B#	B%	W/Oth	W%	Tot	Tot%	B#	B%	W/Oth	W%	Total
219	23.2%	723	76.8%	942	16.3%	2004	34.8%	3762	65.2%	5766
0	0.0%	0	0.0%	0	0.0%	0	0.0%	5	100.0%	5
0	0.0%	1	100.0%	1	100.0%	0	0.0%	1	100.0%	1
0	0.0%	0	0.0%	0	0.0%	1	100.0%	0	0.0%	1
7	25.9%	20	74.1%	27	56.3%	18	37.5%	30	62.5%	48
2	11.8%	15	88.2%	17	94.4%	3	16.7%	15	83.3%	18
1	25.0%	3	75.0%	4	57.1%	2	28.6%	5	71.4%	7
2	100.0%	0	0.0%	2	5.3%	27	71.1%	11	28.9%	38
19	40.4%	28	59.6%	47	3.0%	643	41.3%	914	58.7%	1557
1	33.3%	2	66.7%	3	9.4%	8	25.0%	24	75.0%	32
4	40.0%	6	60.0%	10	7.3%	64	46.7%	73	53.3%	137
0	0.0%	0	0.0%	0	0.0%	1	14.3%	6	85.7%	7
0	0.0%	0	0.0%	0	0.0%	1	11.1%	8	88.9%	9
1	9.1%	10	90.9%	11	9.5%	30	25.9%	86	74.1%	116
0	0.0%	1	100.0%	1	25.0%	1	25.0%	3	75.0%	4
256	24.0%	809	76.0%	1065	13.7%	2803	36.2%	4943	63.8%	7746

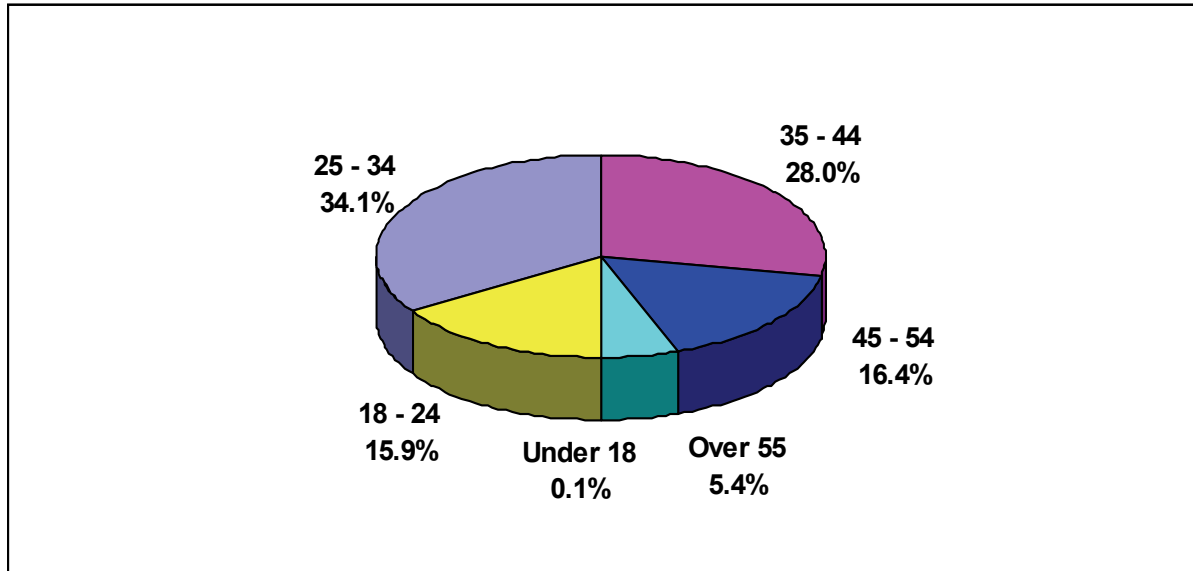
Releases FY 2006

Gender Race	Males					
	B#	B%	W/Oth	W%	Tot	Tot%
RELEASES						
DISCHARGE						
Discharge	384	29.6%	913	70.4%	1297	80.3%
Ct Order Rel	4	23.5%	13	76.5%	17	65.4%
PAROLE						
Paroled - Reg	65	60.7%	42	39.3%	107	93.9%
COND RELEASE						
Boot Camp Rel	139	39.8%	210	60.2%	349	92.3%
Act 50	0	0.0%	1	100.0%	1	100.0%
ADC rel to supv	1888	41.6%	2648	58.4%	4536	90.0%
DCC rel to supv	1	25.0%	3	75.0%	4	100.0%
Transf to DCP	662	43.5%	861	56.5%	1523	99.9%
Transf to ADC	6	26.1%	17	73.9%	23	95.8%
Deaths						
Death Natural	11	28.9%	27	71.1%	38	97.4%
Death Accidental	2	66.7%	1	33.3%	3	100.0%
Death Homicide	0	0.0%	6	100.0%	6	100.0%
Death Suicide	1	50.0%	1	50.0%	2	100.0%
Executions	0	0.0%	1	100.0%	1	100.0%
Escapes	2	40.0%	3	60.0%	5	100.0%
Bond	12	44.4%	15	55.6%	27	100.0%
OUT OF JURISD						
Transf Intr Comp	0	0.0%	2	100.0%	2	100.0%
Transf OOS	10	22.7%	34	77.3%	44	91.7%
TOTAL	3187	39.9%	4798	60.1%	7985	90.1%

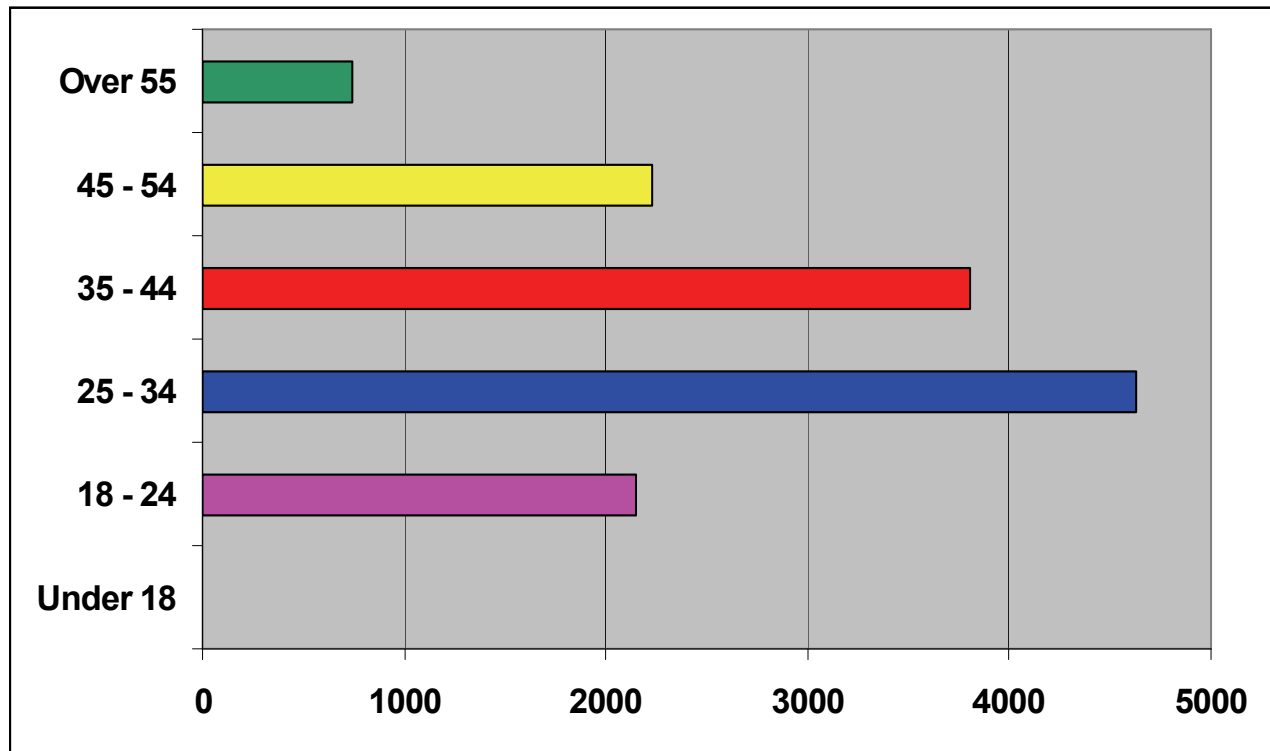
Releases FY 2006

Females						Overall Total				
B#	B%	W/Oth	W%	Tot	Tot%	B#	B%	W/Oth	W%	Total
68	21.4%	250	78.6%	318	19.7%	452	28.0%	1163	72.0%	1615
0	0.0%	9	100.0%	9	34.6%	4	15.4%	22	84.6%	26
4	57.1%	3	42.9%	7	6.1%	69	60.5%	45	39.5%	114
7	24.1%	22	75.9%	29	7.7%	146	38.6%	232	61.4%	378
0	0.0%	0	0.0%	0	0.0%	0	0.0%	1	100.0%	1
140	27.9%	362	72.1%	502	10.0%	2028	40.3%	3010	59.7%	5038
0	0.0%	0	0.0%	0	0.0%	1	25.0%	3	75.0%	4
0	0.0%	2	100.0%	2	0.1%	662	43.4%	863	56.6%	1525
0	0.0%	1	100.0%	1	4.2%	6	25.0%	18	75.0%	24
0	0.0%	1	100.0%	1	2.6%	11	28.2%	28	71.8%	39
0	0.0%	0	0.0%	0	0.0%	2	66.7%	1	33.3%	3
0	0.0%	0	0.0%	0	0.0%	0	0.0%	6	100.0%	6
0	0.0%	0	0.0%	0	0.0%	1	50.0%	1	50.0%	2
0	0.0%	0	0.0%	0	0.0%	0	0.0%	1	100.0%	1
0	0.0%	0	0.0%	0	0.0%	2	40.0%	3	60.0%	5
0	0.0%	0	0.0%	0	0.0%	12	44.4%	15	55.6%	27
0	0.0%	0	0.0%	0	0.0%	0	0.0%	2	100.0%	2
1	25.0%	3	75.0%	4	8.3%	11	22.9%	37	77.1%	48
220	25.2%	653	74.8%	873	9.9%	3407	38.5%	5451	61.5%	8858

Inmate Population Age Breakdown



Average Age of the Inmate Population
Male: 36 Female: 36 Overall: 36



Average Age of Admissions: 33

Training

Basic Correctional Officer Training:

Classes Held: **25** **Students:** **932**

In-Service Training Facilitated by the Training Academy:

Classes Held: **346** **Students: 6,255**

eLearning Courses:

Classes Held: **1,072** **Students:** **1,072**

Total ADC Training:

Classes Held: 1,443 Total Students: 8,259



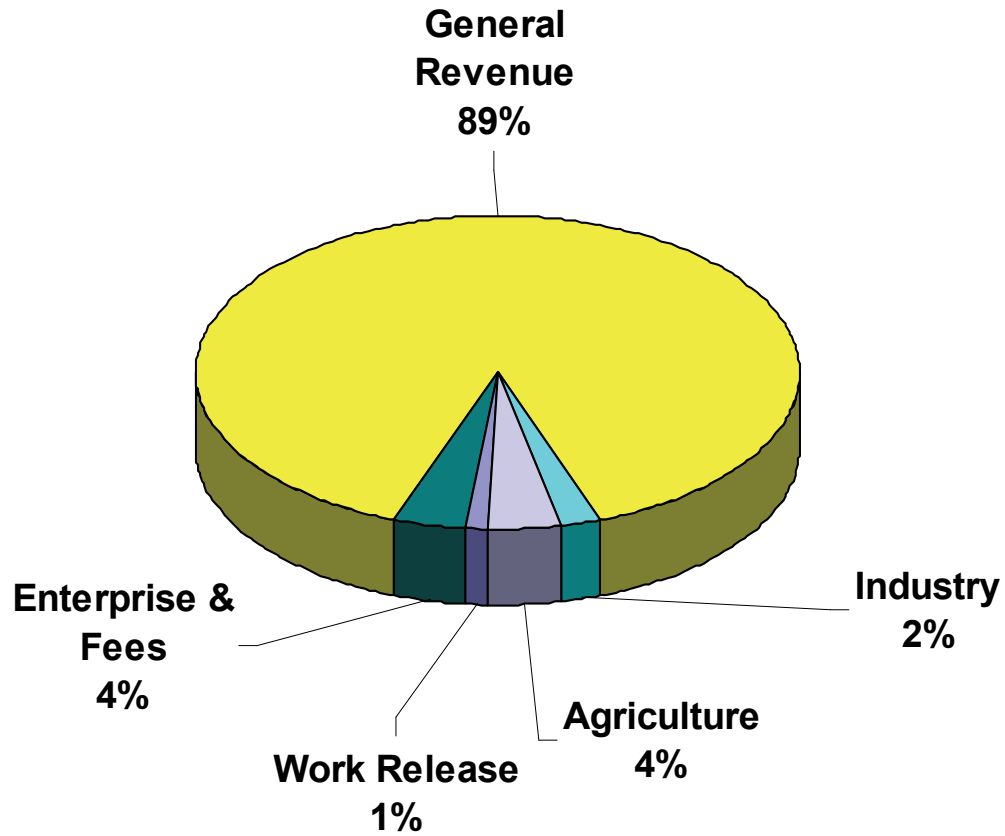
Federal Grants Received

Tuberculosis Grant	\$ 69,555.31
Edward Byrne State and Local Law Enforcement Assistance and Formula Grant	49,764.23
Nursing Research	5,077.68
Residential Substance Abuse	296,237.19
Workplace and Community Transition Training for Incarcerated Youth Offenders	256,167.89
State Criminal Alien Assistance Program (SCAAP) Grant	148,764.00
Serious and Violent Offender (Going Home Grant)	84,665.03
Total	\$ 910,231.33

ADC Personnel Breakdown

<u>Ethnic Group</u>	<u>Male</u>	<u>Female</u>	<u>Total</u>
White	1,288	593	1,881
Black	833	998	1,831
Hispanic	5	7	12
Others	9	6	15
Total	2,135	1,604	3,739

Funding



General Revenue	\$244,972,956	Industry	\$ 6,250,048
Agriculture	10,428,803	Enterprise & Fees	10,738,218
Work Release	2,683,863		
Total:		\$275,073,888	

Inmate Care & Custody Operating Expenditures

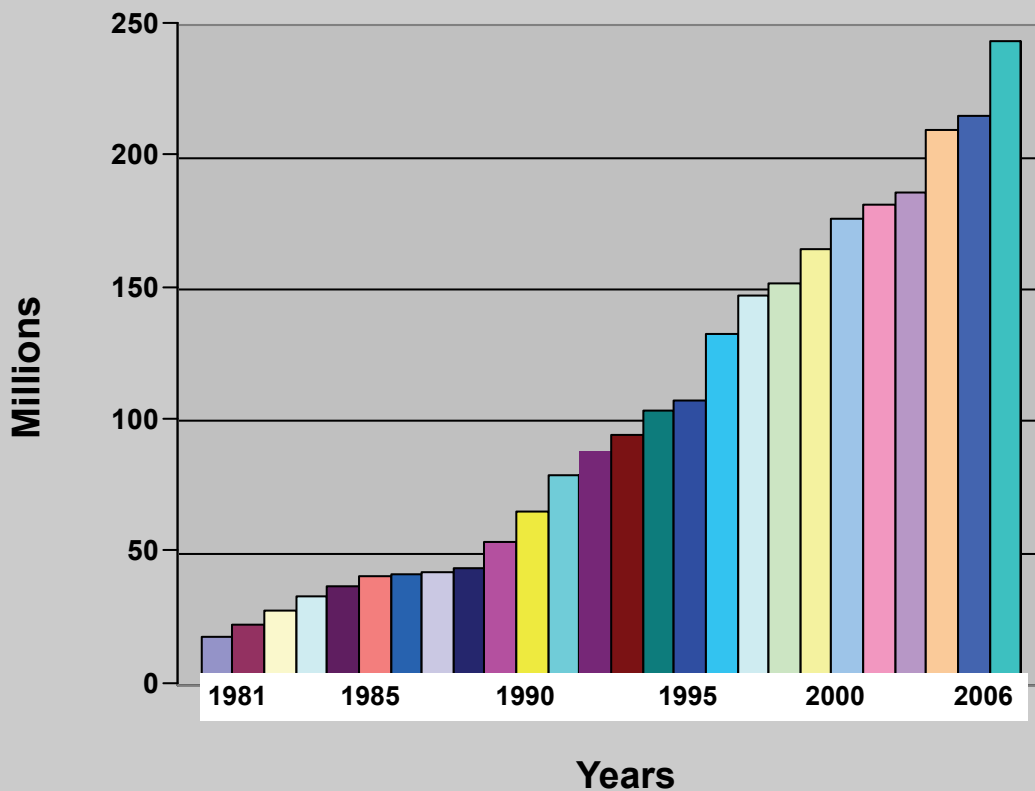
Fiscal Year	Operating Expenditures
--------------------	-------------------------------

1981	\$17,378,007
1982	22,288,513
1983	26,934,369
1984	32,716,248
1985	36,322,363
1986	40,498,539
1987	41,409,864
1988	41,684,110
1989	43,309,796
1990	53,355,902
1991	64,474,347
1992	78,394,633

Fiscal Year	Operating Expenditures
--------------------	-------------------------------

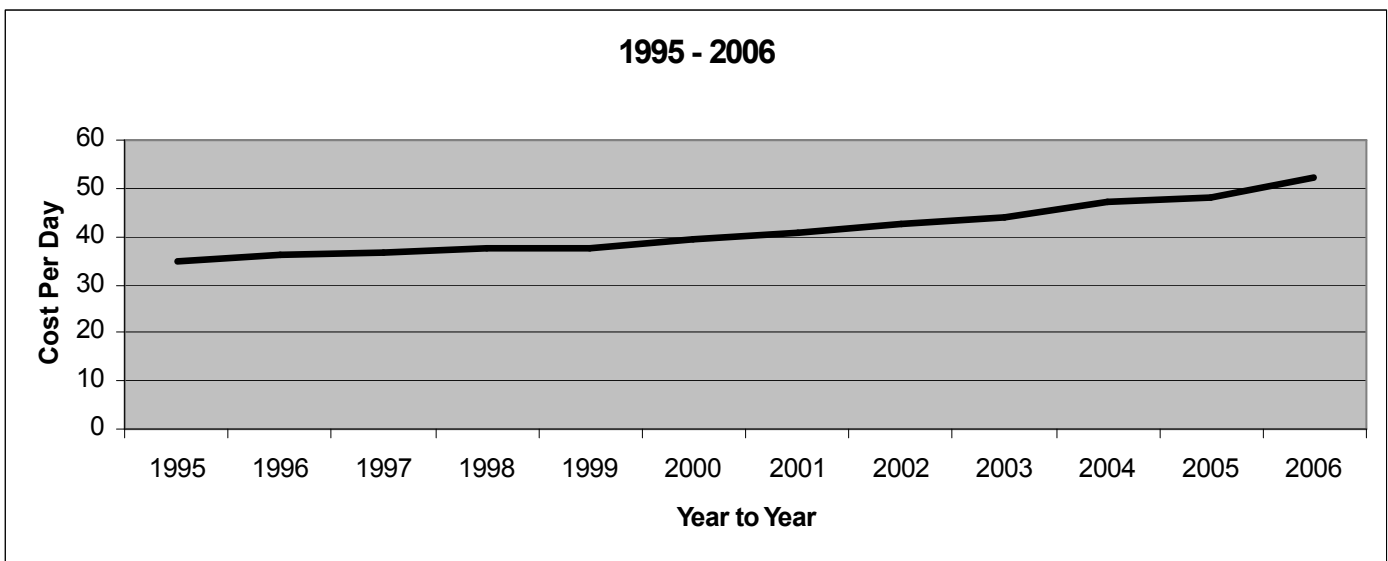
1993	87,775,450
1994	94,149,978
1995	103,071,066
1996	106,756,707
1997	132,493,821
1998	146,461,122
1999	151,336,081
2000	164,025,025
2001	175,717,556
2002	182,187,792
2003	185,682,413
2004	209,542,704
2005	215,042,365
2006	243,207,957

Inmate Care & Custody Operating Expenditures



Inmate Cost Per Day

Fiscal Year	Cost Per Day	Cost Per Year
1981	\$ 16.32	\$ 5,956.80
1982	17.78	6,489.70
1983	19.09	6,967.85
1984	20.86	7,613.90
1985	21.99	8,026.35
1986	23.83	8,697.95
1987	23.36	8,526.40
1988	22.96	8,380.40
1989	24.84	9,066.00
1990	25.60	9,344.00
1991	27.76	10,132.40
1992	29.28	10,687.20
1993	31.43	11,471.95
1994	32.95	12,026.75
1995	34.84	12,716.60
1996	35.96	13,125.40
1997	36.86	13,453.90
1998	37.40	13,651.00
1999	37.65	13,742.25
2000	39.35	14,362.75
2001	40.79	14,888.35
2002	42.59	15,545.35
2003	44.11	16,100.15
2004	47.32	17,271.80
2005	48.24	17,607.60
2006	52.12	19,023.80



Construction Expenditures

CUMMINS UNIT

Milk Processing`	\$	282,888.04
TOTAL	\$	282,888.04

PINE BLUFF COMPLEX

Admin East Renovation (ASP-CID)	\$	9,480.92
Classification Mobile Shelving		22,546.00
Admin East Bldg.		49,767.84
Lock Replacement Various Units		52,615.35
TOTAL	\$	134,410.11

VARNER UNIT

Super Max Construction	\$	17,490.15
Varner Dining Hall		88,711.94
TOTAL	\$	106,202.09

EAST ARKANSAS UNIT

Lethal Fence	\$	404,362.20
TOTAL	\$	404,362.20

MALVERN UNIT

Construction	\$	2,027,403.78
Malvern Special Needs Project		11,590,769.84
Ouachita River Treatment Building		402,335.03
Malvern Mobile Shelving		19,902.74
TOTAL	\$	14,040,411.39

MCWRC

Mississippi County Renovation	\$	6,277.01
TOTAL	\$	6,277.01

MCPHERSON

McPherson Treatment Building	\$	463.30
McPherson 200 Bed Construction		666,413.76
McPherson Industry		167,730.92
McPherson Kitchen Renovation		40,254.98
McPherson Sally Port		3,267.30
TOTAL	\$	878,130.26

Construction Expenditures

WRIGHTSVILLE UNIT

200 Bed Construction	\$ 1,544,397.79
Wrightsville Perimeter Road	36,728.44
TOTAL	\$ 1,581,126.23

NEWPORT UNITS

Grimes Industry	\$ 13,659.30
Construction	103,402.86
TOTAL	\$ 117,062.16

TEXARKANA WORK RELEASE

Renovation	\$ 99,629.28
TOTAL	\$ 99,629.28

TOTAL FOR ALL PROJECTS **\$ 18,071,432.77**



Construction of the Women's Barracks at Wrightsville.

Remodeling of the Texarkana Work Release Unit building.



Arkansas Correctional Industries



Through dedicated efforts by Arkansas Correctional Industries sales division, and strict quality control standards in the Operations division, several new agencies have been added to the list of satisfied customers. One such agency being the Arkansas National Guard. ACI offers a variety of goods and services for sale to entities supported by state revenue. Recent legislation also permits ACI to market products to all employees of such agencies.

Arkansas Correctional Industries, a self-supported division of Arkansas Department of Correction, operates traditional industries within five (5) units, offering approximately 500 productive jobs for inmates. ACI's first Prison Industry Enhancement Certification Program (PIECP) partner, Actronix, Inc. operates a wiring harness factory at the McPherson Unit in Newport. Actronix, Inc. proudly markets this factory as being located inside a prison in its sales presentations. Due to the cost of operation, this private sector company is able to compete for business very well with those competitors who chose open factories off shore. This is the first program within the prison system where inmates, not assigned to Work Release Programs, are able to earn a regular salary. Inmates assigned to this program contribute a part of their salary to the Victim's Reparations Fund and send money to their dependents if applicable.

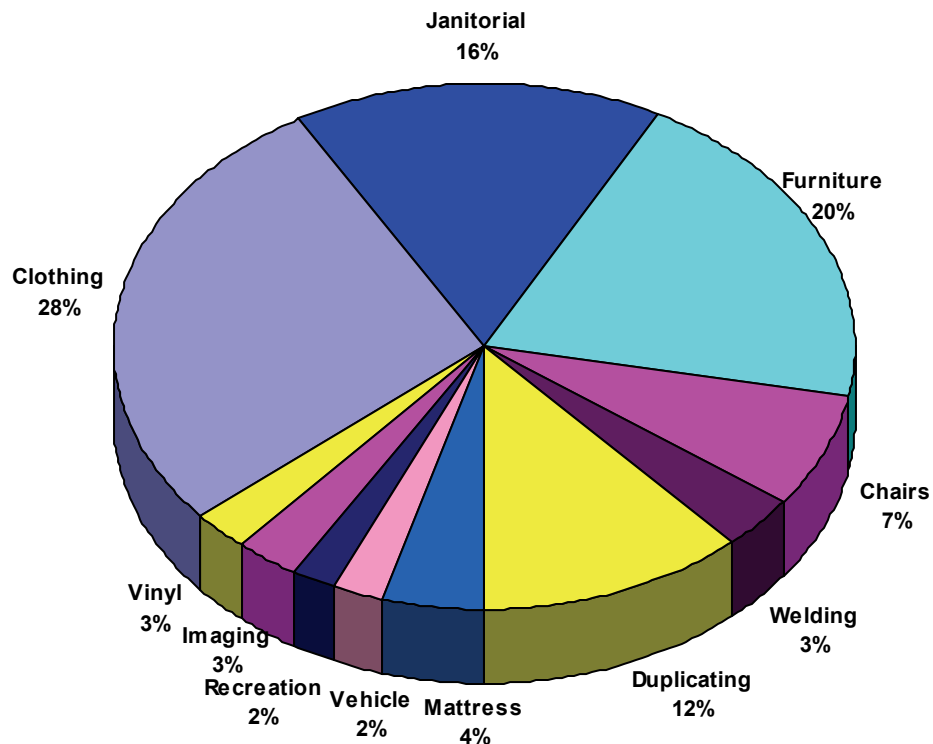
ACI products are listed in an on-line catalog at www.acicatalog.com. Customers have the capability to order products directly from the website. A one-time 5% discount is offered to customers when making their first online web order.

Arkansas Correctional Industries

FY06 ARKANSAS CORRECTIONAL INDUSTRIES SALES

Clothing	\$1,541,357	Mattress	\$132,027
Janitorial	\$1,400,246	Vehicle	\$115,102
Furniture	\$1,061,300	Recreation	\$151,095
Chairs	\$ 495,095	Imaging	\$162,826
Welding	\$ 348,317	Vinyl	\$119,246
Duplicating	\$ 645,222		

TOTAL SALES **\$6,171,833**



Administration Directory

Arkansas Board of Corrections

P.O. Box 20550

Pine Bluff, AR 71612

Phone: (870) 267- 6754

Fax: (870) 267- 6756

Drew Baker, Chairman

Kelly Pace, Vice-Chair

W.L. (Bill) Ferren, Secretary

Leroy Brownlee, Member

Benny Magness, Member

Alonza Jiles, Member

Mary Parker, Member

Mark Colbert, Administrator/Compliance Attorney

Shari Gray, Administrative Assistant

Director's Office

Larry B. Norris, Director

P.O. Box 8707

Pine Bluff, AR 71611

(870) 267-6200

Stephen Williams, Assistant to the Director for Special Projects

Rob DeGostin, Staff Attorney

Dina Tyler, Assistant to the Director, Legislative and Public Affairs

James Gibson, Administrator, Internal Affairs/Disciplinary Hearings

Jane Manning, EEO/ Grievance Officer

Mike Wynn, Internal Auditor

Institutions

Ray Hobbs, Chief Deputy Director

(870) 267-6300

George Brewer, Administrator, Classification

John Kleiner, Coordinator, Emergency Preparedness

Lt. Dennis Reap, K-9 Drug/Contraband, Supervisor

Nancy Koonce, Manager, Accreditation

Administration Directory

Institutions—contd.

Ronald Dobbs, Assistant Director
(870) 267-6215

Danny Heflin, Coordinator, Transportation

Health and Correctional Programs

Wendy Kelley, Deputy Director
(870) 267-6360

John Byus, Administrator, Medical Services
Bob Parker, Administrator, Mental Health Services
Linda Shepherd, Coordinator, Volunteer Services
Eddie Sensat, Administrator, Religious Services
Sheri Flynn, Administrator, Sex Offender Assessment
Dennice Alexander, Library Administrator

Institutional Operations

Larry May, Deputy Director
(870) 267-6303

Jerry Campbell, Administrator, Industry
James Bost, Administrator, Agriculture
Mary Jones, Coordinator, Vocational Education
Tiffanye Compton, Coordinator, Inmate Grievance

Administrative Services

Sheila Sharp, Assistant Director
(870) 267-6240

Kevin Murphy, Administrator, Human Resources
Kay Skillen, Administrator, Warehouse Operations
Mike Carraway, Administrator, Fiscal Affairs

Administration Directory

Administrative Services –contd.

Marylon Kushmaul, Administrator, Accounting Control
Ron Manning, Administrator, Accounting Operations
Roger Patton, Administrator, Information Systems
Burl Scifres, Administrator, Procurement
Mike Cannon, Ph.D., Administrator, Research and Planning

Construction/Maintenance

David Cruseturner, Assistant Director
870-267-6625

Leon Starks, Coordinator, Maintenance
Robert Leggett, Coordinator, Construction
Lynn Roberts, Coordinator, Construction//Maintenance

Educational Services

Charles Allen, Ph.D., Superintendent
P.O. Box 8707
Pine Bluff, AR 71611
(870) 267-6725

Vocational Education

Joe Kelnhofer, Director
P.O. Box 1179
Pine Bluff, AR 71613
(870) 267-6903

Facility/Unit Directory

Benton Unit

6701 Hwy. 67, Benton, AR 72015-8488

Warden: Sara McQuilliams

PH: (501) 315-2252

FAX: (501) 315-3736

Cummins Unit

P.O. Box 500, Grady, AR 71644-0500

Warden: Gaylon Lay

PH: (870) 850-8899

FAX: (870) 850-8862

Delta Regional Unit

880 East Gaines, Dermott, AR 71638-9505

Warden: Mark Cashion

PH: (870) 538-2000

FAX: (870) 538-2007

Diagnostic Unit

7500 Correction Circle, Pine Bluff, AR 71603-1498

Warden: Rick Toney

PH: (870) 267-6410

FAX: (870) 267-6709

East Arkansas Regional Unit

P.O. Box 180, Brickeys, AR 72320-0180

Warden: Greg Harmon

PH: (870) 295-4700

FAX: (870) 295-6564

Grimes Unit

300 Wackenhut Way, Newport, AR 72112-33493

Warden: John Maples, Jr.

PH: (870) 523-5877

FAX: (870) 512-2235

Facility/Unit Directory

J. Aaron Hawkins Sr. Center For Women

PO Box 1010, Wrightsville, AR 72183-1010

Assistant Warden: John Craig

PH: (501) 897-2256

FAX (501) 897-2257

Jefferson County Jail/Correctional Facility

7206 West 7th Ave., Pine Bluff, AR 71603

Warden: Rick Toney

PH: (870) 267-6800

FAX: (870) 267-6808

Maximum Security Unit

2501 State Farm Road, Tucker, AR 72168-8713

Warden: David White

PH: (501) 842-3800

FAX: (501) 842-1977

McPherson Unit (Women's Unit)

302 Wackenhut Way, Newport, AR 72112-33493

Warden: John Maples, Jr.

PH: (870) 523-2639

FAX: (870) 523-6202

Mississippi County Work Release

P.O. Box 10, Luxora, AR 72358-0010

Supervisor: Joe Porchia

PH: (870) 658-2214

FAX: (870) 658-2678

North Central Unit

HC 62, Box 300 Calico Rock, AR 72519-0300

Warden: Jimmy Banks

PH: (870) 297-4311

FAX: (870) 297-4322

Facility/Unit Directory

Northwest Arkansas Work Release Center

200 East Price Ave., Springdale, AR 72764-1352

Supervisor: James Brooks

PH: (479) 756-2037

FAX: (479) 756-0445

Ouachita River Correctional Unit

P.O. Box 1630, Malvern, AR 72104

Warden Dale Reed

PH: (501) 467-3400

FAX: (501) 467-3430

Pine Bluff Unit

890 Freeline Dr., Pine Bluff, AR 71603 -1498

Warden: Rick Toney

PH: (870) 267-6510

FAX: (870) 267-6523

Texarkana Regional Correction Center

305 East 5th Street, Texarkana, AR 75501

Supervisor: Larry Cauley

PH: (870) 779-3939

FAX: (870) 779-1616

Tucker Unit

P.O. Box 240, Tucker, AR 72168-0240

Warden: Marvin Evans

PH: (501) 842-2519

FAX: (501) 842-3958

Varner/ Varner Supermax Unit

P.O. Box 600, Grady, AR 71644-0600

Warden: Grant Harris

PH: (870) 479-3030

FAX: (870) 479-3803

Facility/Unit Directory

Wrightsville Unit

P.O. Box 1000, Wrightsville, AR 72183-1000

Warden: Kay Howell

PH: (501) 897-5806

FAX: (501) 897-5716

Wrightsville Boot Camp

P.O. Box 1010, Wrightsville, AR 72183-1000

Assistant Warden: John Craig

PH: (501) 897-2800

FAX: (501) 897-1195

Facility/Unit Locations

